



June 6, 2025

ADDENDUM #2
BID NUMBER: 24-11

ESPLANADE BUILDING 4 ELEVATOR ADDITION

IMPORTANT NOTICE

Please note the following clarification to Bid Number 24-11:

1. Conduit Roof Penetration: Refer to attached Siplast Roofing detail, Sketch ASK-4, for optional conduit routing across roof. Use Dura-Blok supports as sleepers for roof top conduit.
2. Attached is Utility Mapping for reference.

Please note the following responses to questions asked by prospective bidders:

1. Question: Sheet E001 shows a buss tap off of the existing 600A service to feed a 100A fused disconnect which feeds new panel "EL". Please confirm if this is how the engineer intends to feed new panel "EL". If not, please advise on how new panel "EL" is to be fed.

Response: Bidding electrical contractor shall include – scheduled after hour power shut down for installation of hardware for circuit extension to fused disconnect using 10 ft. tap rule on bus.

2. Question: Section 1/A201 and details 15/A521 and 10/A531 show roof joist and ceiling joist. Detail 1/S500 shows a 4x12 ledger below the roof joist but no ceiling joist. Please clarify.

Response: Ceiling joists are typically not shown on structural plans. Refer to architectural for ceiling joist locations, and structural typical detail 11/S40 for ceiling joist detailing.

3. Question: On detail 3/S102, how is the existing 4x12 Perlin supported on grid line 8 at CMU shaft wall?

Response: (E) 4x12 Purlins end at (E) 6x20 header. Existing framing switches to 2x12 joists spanning EW direction below Gridline D.

4. Question: Detail 4&5 / A501 call for waterproofing over the plywood deck. Please provide details of termination at the existing and new walls / both wood frame and CMU.

Response: Refer to Addendum #2, general clarifications and sketch ASK-3.

All specifications remain unchanged except sections or parts of sections added to, revised, deleted or clarified by this Addendum.

This Addendum shall be considered part of the Project Documents for the above-mentioned project as though it had been issued at the same time and shall be incorporated integrally herewith. Where provisions of the following supplementary data differ from those of the original Project Documents, this Addendum shall govern and take precedence.

Bidders are hereby notified that they shall make any necessary adjustments in their bid on account of this Addendum. It will be construed that each Bidder's bid is submitted with full knowledge of all modifications and supplemental data specified herein.

Should you have any questions/concerns related to the Bid requirements, please contact Kristin Lange, Purchasing & Contracts Manager at klange@ocde.us.

Sincerely,

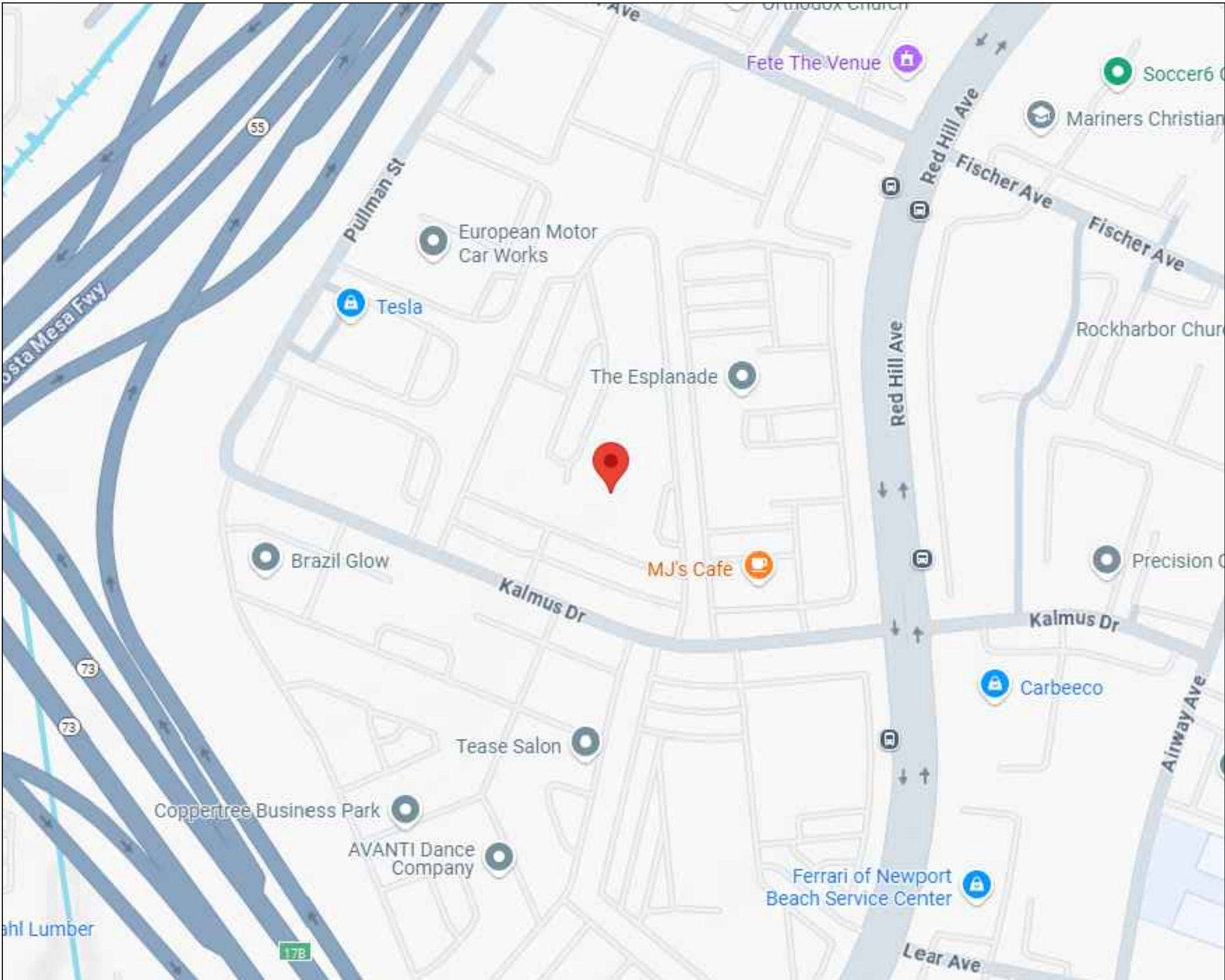


Kristin Lange
Purchasing & Contracts Manager

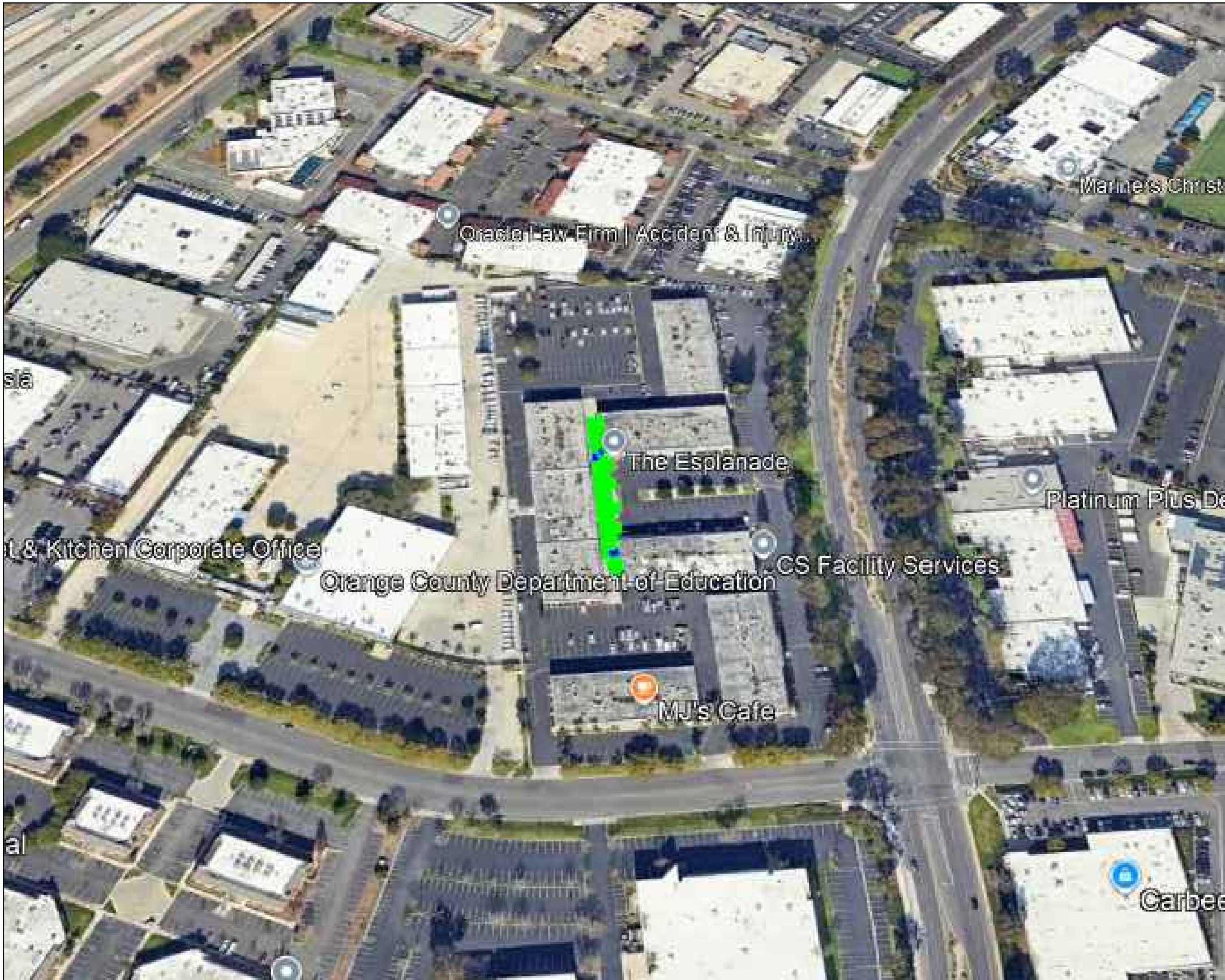
3001 Red Hill Ave, Costa Mesa, CA 92626

UTIL-LOCATE SUBSURFACE UTILITY MAP

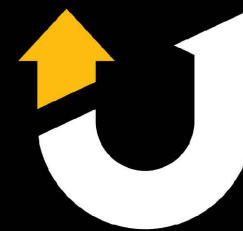
VICINITY MAP



LOCATION MAP



NOTE: POTHOLING IS "HIGHLY" RECOMMENDED, THE EXPOSURE OF THE UTILITY LINE WILL ACCURATELY VERIFY EXACT, DEPTH, DIRECTION, SIZE AND MATERIAL OF THE UTILITY PIPE OR LINE.
FOR AN ESTIMATE-PLEASE CALL OFFICE.



UTIL LOCATE
UTILITY LOCATING & MAPPING

SUBSURFACE UTILITY MAP

2365 N Batavia St, Orange, CA 92865
Toll free: 888.885.6228 Office: 714.521.5393 Cell: 714.296.9680
Email: gilbert@util-locate.com Web: www.util-locate.com

SUBSURFACE UTILITY MAP SYMBOLS

Symbols	Description
○	MANHOLE
⊙	GREASE INTERCEPTOR
⊠	HANDHOLE
⊕	SEWER / STORM DRAIN CLEAN OUT (C/O)
⊗	COMMUNICATION DROP / GAS DROP / ELECTRICAL DROP / WATER DROP
☆	STANDARD & PROPERTY LIGHT / YARD-LIGHT STANDARDS
⌵	UTILITY POLE / POWER POLE
⊛	PARKING LOT LIGHTS / STREET LIGHTS
—○	PIPE TURNS UP / RISER / SPIGOT
⊠	STORM-GRATE / STORM DRAIN
⊙	CURB SIDE DRAIN
●	FLOOR DRAIN
⊞	ELECTRICAL PANEL / SERVICE BOX / COMMUNICATION PANEL
△	TELEPHONE / BLUE CODE EMERGENCY PHONE
○	GAS METER / WATER METER
⊞	GAS VALVE / WATER VALVE / CONTROL VALVE
⊞	ELECTRICAL TRANSFORMER OR PAD MOUNTED TRANSFORMER (E.P.M.T)
⊞	ELECT. BOX / COM. BOX / VAULTS / PULL BOX / J-BOX / CONTROL BOX
⊞	FIRE HYDRANT / POST INDICATOR VALVE
⊞	FDC (FIRE DEPARTMENT CONNECTION)
⊞	END OF SIGNAL / BLOCKED PASS THIS POINT
⊞	BACKFLOW PREVENTER
⊞	UTILITY LINE CUT
⊞	CAPPED UTILITY LINE
⊞	POTHOLE LOCATING

ABBREVIATION		ABBREVIATION	
Abvr	Description	Abvr	Description
CV	Communication Vault	MTY	Empty
EV	Electrical Vault	TW	Tracer Wire
NC	Nonconductive	BFP	Backflow Preventer
MH	Mandhole	N/A	Not Accessible
PB	Pull Box	UNK-I	Unknown Induction
CNO	Can not open	UNK-G	Unknown GPR
WV	Water Valve	CU	Copper
GV	Gas Valve	RC	Reclaim Water
D	Depth ±	PIV	Post Indicator Valve
PL	Plastic (Conduit or Pipe)	JT	Joint Trench
CMT	Cement	TOP	Top Of Pipe
CI	Cast Iron	ACP	Asbestos Cement Pipe
MTL	Metal	VCP	Verified Clay Pipe

PREPARED FOR

OCDE

PROJECT ADDRESS

3001 Red Hill Ave,
Costa Mesa, CA 92626

DATE	REVISION
06-05-25	Initial Drawing

DRAWN BY:

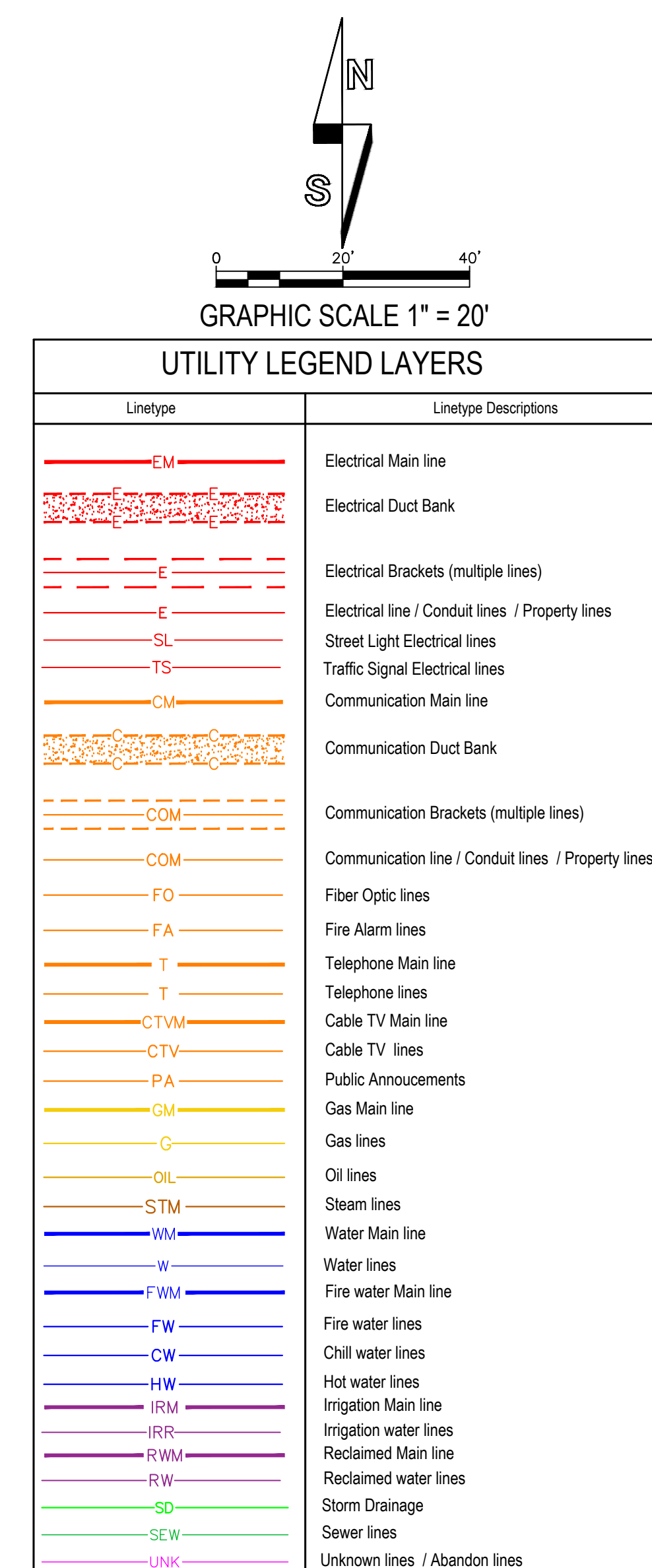
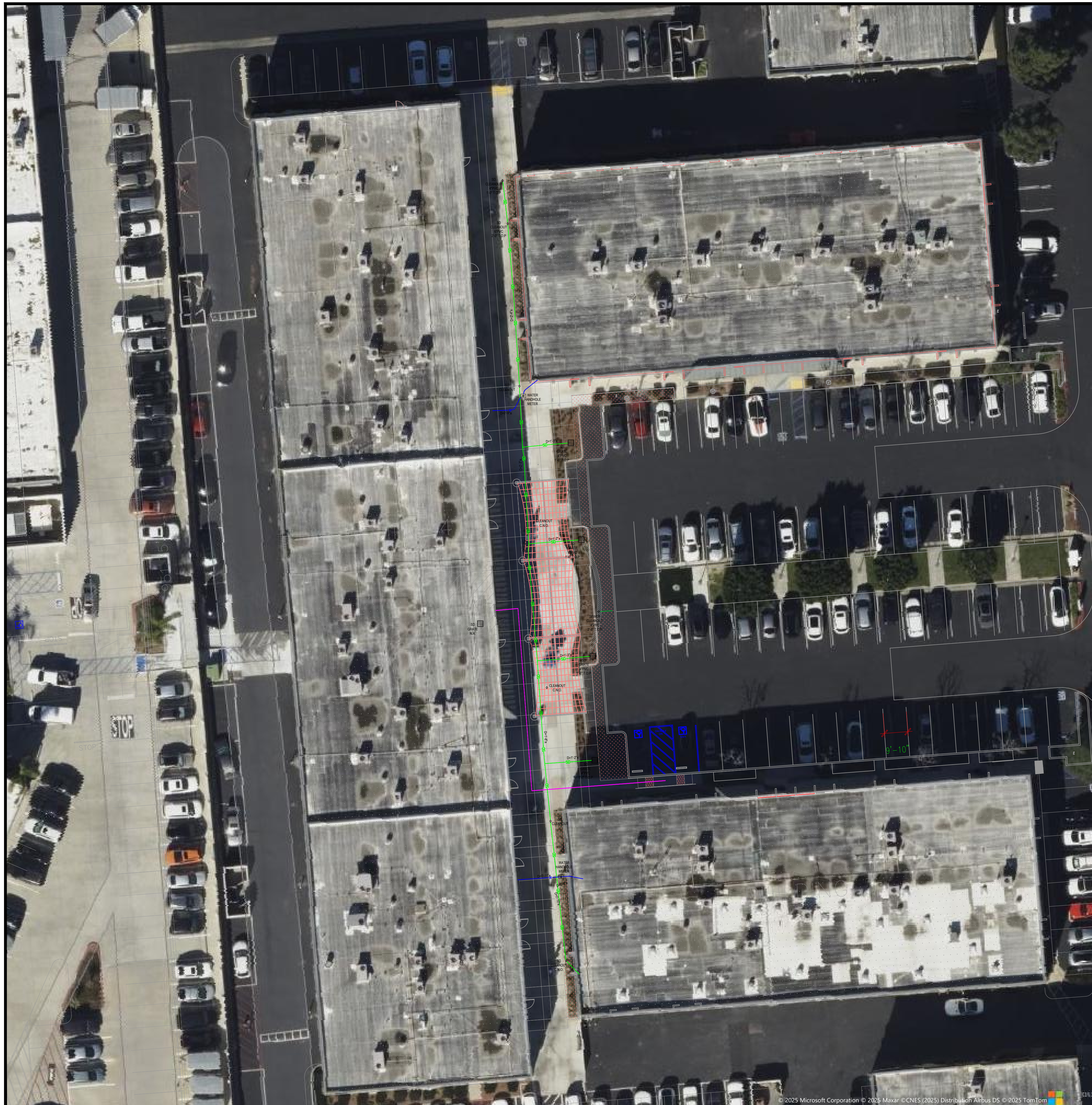
G.E

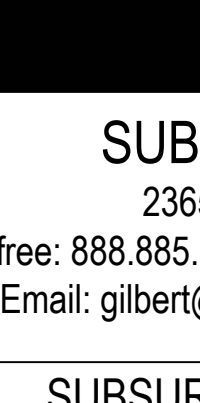
CHECKED BY:

A.C

SHEET No:

TITLE PAGE





UTIL LOCATE

UTILITY LOCATING & MAPPING

SUBSURFACE UTILITY MAP

2365 N Batavia St, Orange, CA 92865

Toll free: 888.885.6228 Office: 714.521.5393 Cell: 714.296.9680

Email: gilbert@util-locate.com Web: www.util-locate.com

SUBSURFACE UTILITY MAP SYMBOLS

Symbols	Description
○	MANHOLE
⊗	GREASE INTERCEPTOR
□	HANDHOLE
⊕	SEWER / STORM DRAIN CLEAN OUT (C/O)
⊙	COMMUNICATION DROP / GAS DROP / ELECTRICAL DROP / WATER DROP
☆	STANDARD & PROPERTY LIGHT / YARD-LIGHT STANDARDS
↘	UTILITY POLE / POWER POLE
↔	PARKING LOT LIGHTS / STREET LIGHTS
—○—	PIPE TURNS UP / RISER / SPIGOT
▤	STORM-GRATE / STORM DRAIN
⊖	CURB SIDE DRAIN
●	FLOOR DRAIN
⊞	ELECTRICAL PANEL / SERVICE BOX / COMMUNICATION PANEL
△	TELEPHONE / BLUE CODE EMERGENCY PHONE
○	GAS METER / WATER METER
⊗	GAS VALVE / WATER VALVE / CONTROL VALVE
⊞	ELECTRICAL TRANSFORMER OR PAD MOUNTED TRANSFORMER (E.P.M.T)
⊞	ELECT. BOX / COM. BOX / VAULTS / PULL BOX / J-BOX / CONTROL BOX
⊞	FIRE HYDRANT / POST INDICATOR VALVE
⊞	FDC (FIRE DEPARTMENT CONNECTION)
⊞	END OF SIGNAL / BLOCKED PASS THIS POINT
↘	BACKFLOW PREVENTER
S	UTILITY LINE CUT
L	CAPPED UTILITY LINE
⊕	POTHOLE LOCATING

ABBREVIATION		ABBREVIATION	
Abv	Description	Abv	Description
CV	Communication Vault	MTY	Empty
EV	Electrical Vault	TW	Tracer Wire
NC	Nonconductive	BFP	Backflow Preveter
MH	Mandhole	N/A	Not Accessible
PB	Pull Box	UNK-I	Unknown Induction
CNO	Can not open	UNK-G	Unknown GPR
WV	Water Valve	CU	Copper
GV	Gas Valve	RC	Reclaim Water
D	Depth ±	PIV	Post Indicator Valve
PL	Plastic (Conduit or Pipe)	JT	Joint Trench
CMT	Cement	TOP	Top Of Pipe
CI	Cast Iron	ACP	Asbestos Cement Pipe
MTL	Metal	VCP	Verfitted Clay Pipe

PREPARED FOR

OCDE

PROJECT ADDRESS

3001 Red Hill Ave,

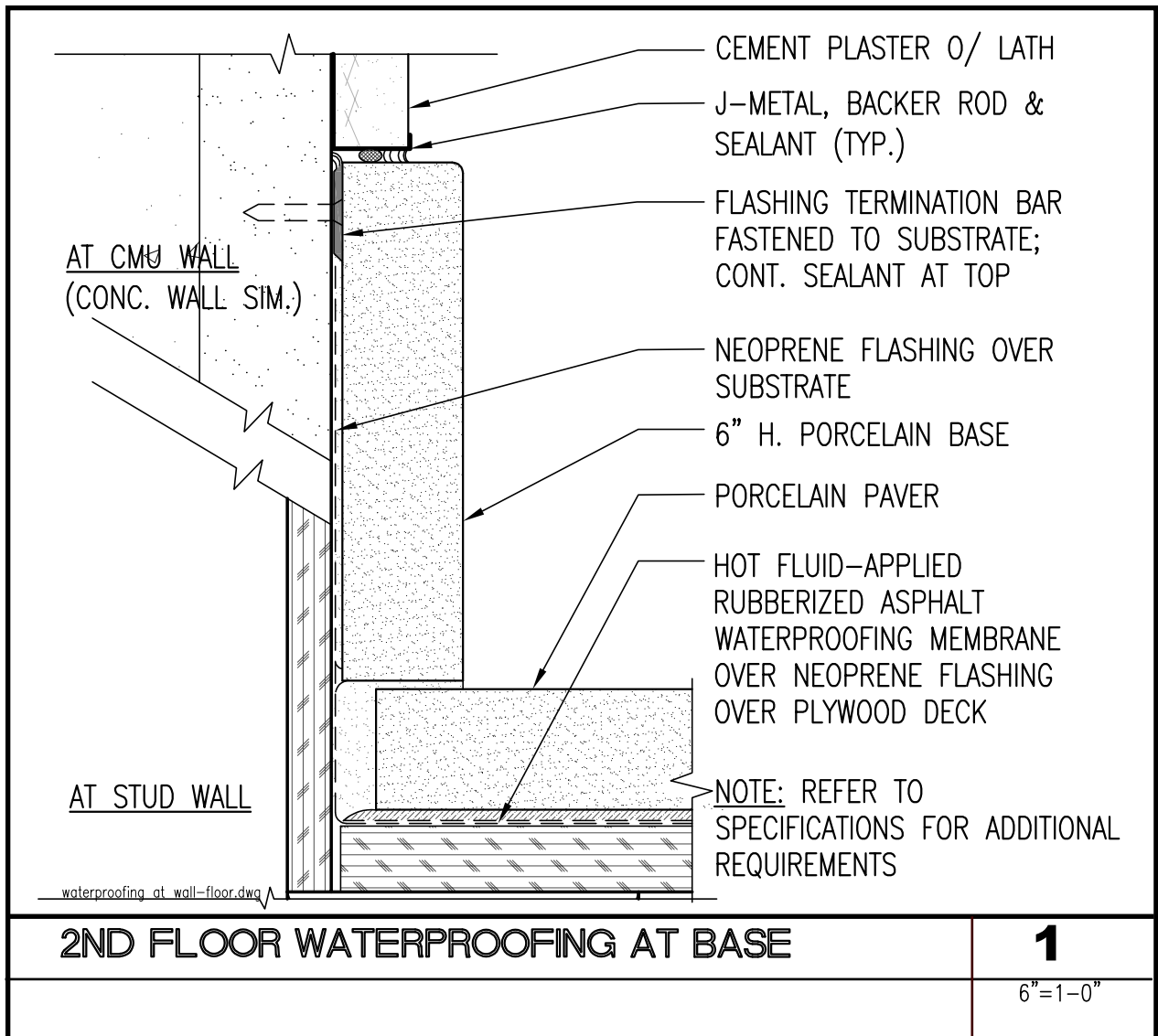
Costa Mesa, CA 92626

DATE	REVISION
06-05-25	Initial Drawing

DRAWN BY:	G.E
CHECKED BY:	A.C

SHEET No:

SUM-1

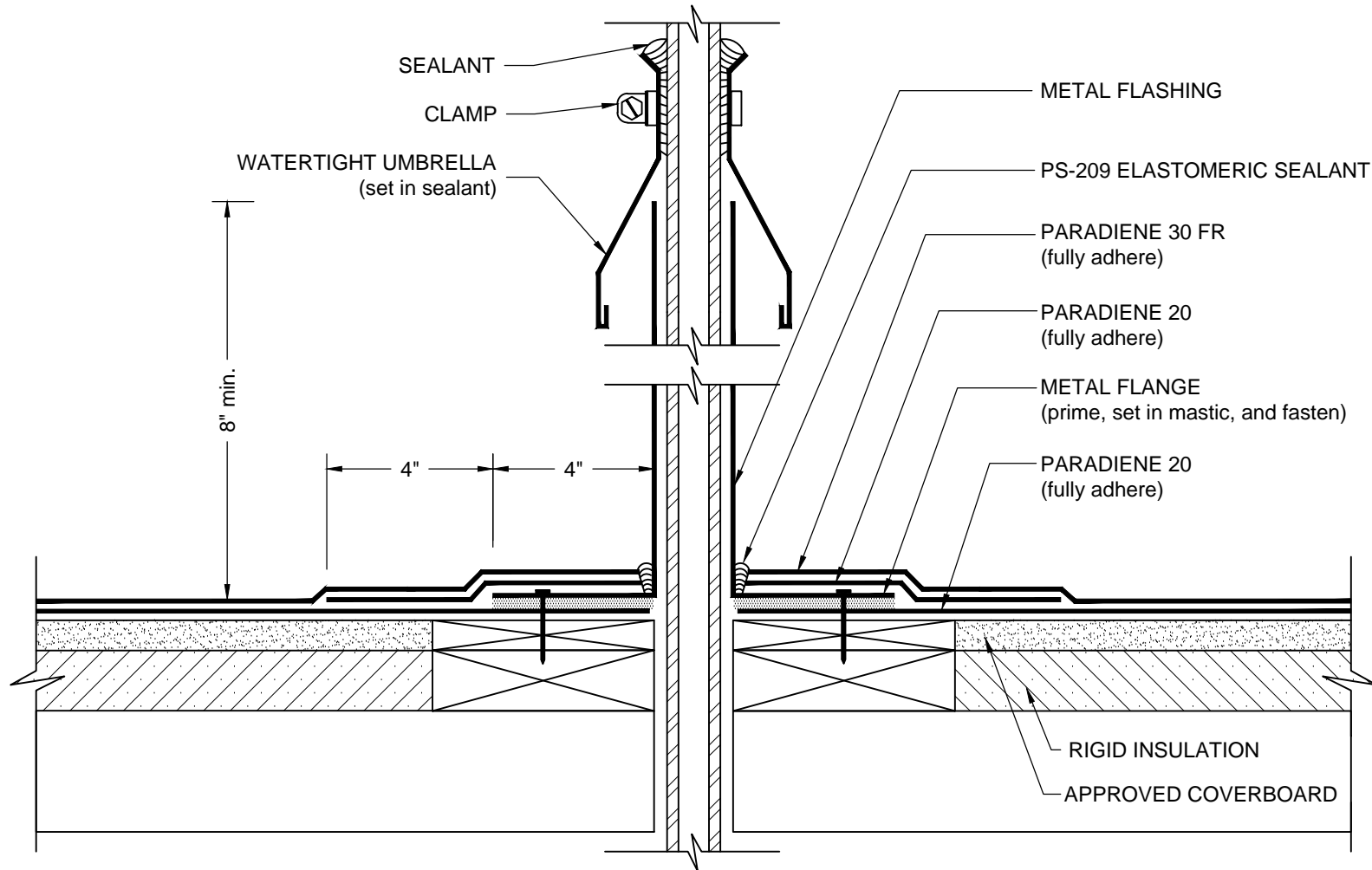


BID NO. 24-11

ORANGE COUNTY DEPARTMENT OF EDUCATION
ESPLANADE BUILDING 4 ELEVATOR ADDITION
3001 REDHILL AVENUE, COSTA MESA, CA

SMALL PIPE PENETRATION

PARADIENE 20/30 FR - RIGID INSULATION



NOTES:

1. WHERE PRIMER IS INDICATED TO MAINTAIN PROPER ADHESION, USE PA-1125 OR PA-917 LS PRIMER. CONTACT SIPLAST FOR SPECIFIC REQUIREMENTS.
2. THE CARPENTRY AND METAL WORK SHOWN DEPICT SHOP FABRICATION AND JOB-SITE ASSEMBLY. THESE COMPONENTS SHOULD BE DESIGNED/FABRICATED/INSTALLED ACCORDING TO GENERALLY ACCEPTED INDUSTRY PRACTICES, STANDARDS, AND APPROVALS.
3. DISSIMILAR METAL TYPES SUBJECT TO ELECTROLYTIC REACTION SHOULD BE PHYSICALLY SEPARATED.
4. PA-1021 PLASTIC CEMENT, PA-828 FLASHING CEMENT, SFT CEMENT, OR PS-715 NS ELASTOMERIC SEALANT IS REQUIRED WHERE MASTIC IS INDICATED.
5. REQUIREMENTS AND RECOMMENDATIONS DETAILED IN CURRENT SIPLAST SPECIFICATIONS SHALL APPLY IN ADDITION TO THE ABOVE DRAWING.

ADDENDUM #02

ASK-4

CAUTION: SIPLAST RECOMMENDS THAT ALL PRACTICES PERTAINING TO NRCA CERTA GUIDELINES BE FOLLOWED WHEN TORCHING METHODS ARE EMPLOYED. THIS INCLUDES PERFORMING A FIRE WATCH FOLLOWING ANY TORCH APPLICATIONS. ALWAYS HAVE APPROVED FIRE-EXTINGUISHING EQUIPMENT NEARBY.

N.T.S



1000 Rochelle Boulevard - Irving, Texas - 75062 (800) 922-8800 www.siplast.com

Ref: Small Pipe Penetration - 2030 - Rigid

Rev: 11.17.16

BID NO. 24-11