

June 10, 2024

ADDENDUM #1

**BID NUMBER: 23-16
ELECTRONIC DOOR ACCESS CONTROL SYSTEM**

IMPORTANT NOTICE

Please make the following changes to Bid Number 23-16:

I. Section III Bidder Requirements – Subsection 2 – Bidder Qualifications, Subsection H shall be replaced with the following language:

H. The Installing Bidder must provide three (3) current Software House references which the Installing Bidder was the primary contractor within the last three (3) years for projects that are of a similar size with over 150 doors and multiple locations connecting back to the server.

2. Pages 43 - 45 Argosy - First, Second and Third Floor Diagrams. Please replace with the attached revised diagrams for the Argosy – First, Second, and Third floors.

3. Page 51 – HLC South – Bldg. E. Second Floor. Please replace with the attached revised diagram – HLC South – Bldg. E. Second Floor.

4. information Required of Bidder, item number 15, Page 74. Please change to read as follows:

Please list the school districts, public or private agencies that your firm as the primary contractor provided similar services with over 150 doors and multiple locations connecting back to the server within the last three (3) years. Bidder must provide three (3) current Software House references within the last three (3) years.

NEW PROJECT SPECIFICATIONS:

1. Installing Bidder is required to save any and all penetration cutouts made to walls and ceilings throughout and give to SUPERINTENDENT. SUPERINTENDENT will reinstall the cutouts and patch and paint areas after all work is completed by the Installing Bidder.

2. SUPERINTENDENT will supply automatic closures for HLC South. Installing Bidder shall be responsible to install on doors that are missing closures.

3. All double doors (both sites) need to have both doors electrified in a parallel configuration.

4. Exterior gates at HLC South need one (1) gate door electrified.

All Project Documents and specifications remain unchanged except sections or parts of sections added to, revised, deleted or clarified by this Addendum.

This Addendum shall be considered part of the Project Documents for the above- mentioned project as though it had been issued at the same time and shall be incorporated integrally herewith. Where provisions of the following supplementary data differ from those of the original Project Documents, this Addendum shall govern and take precedence.

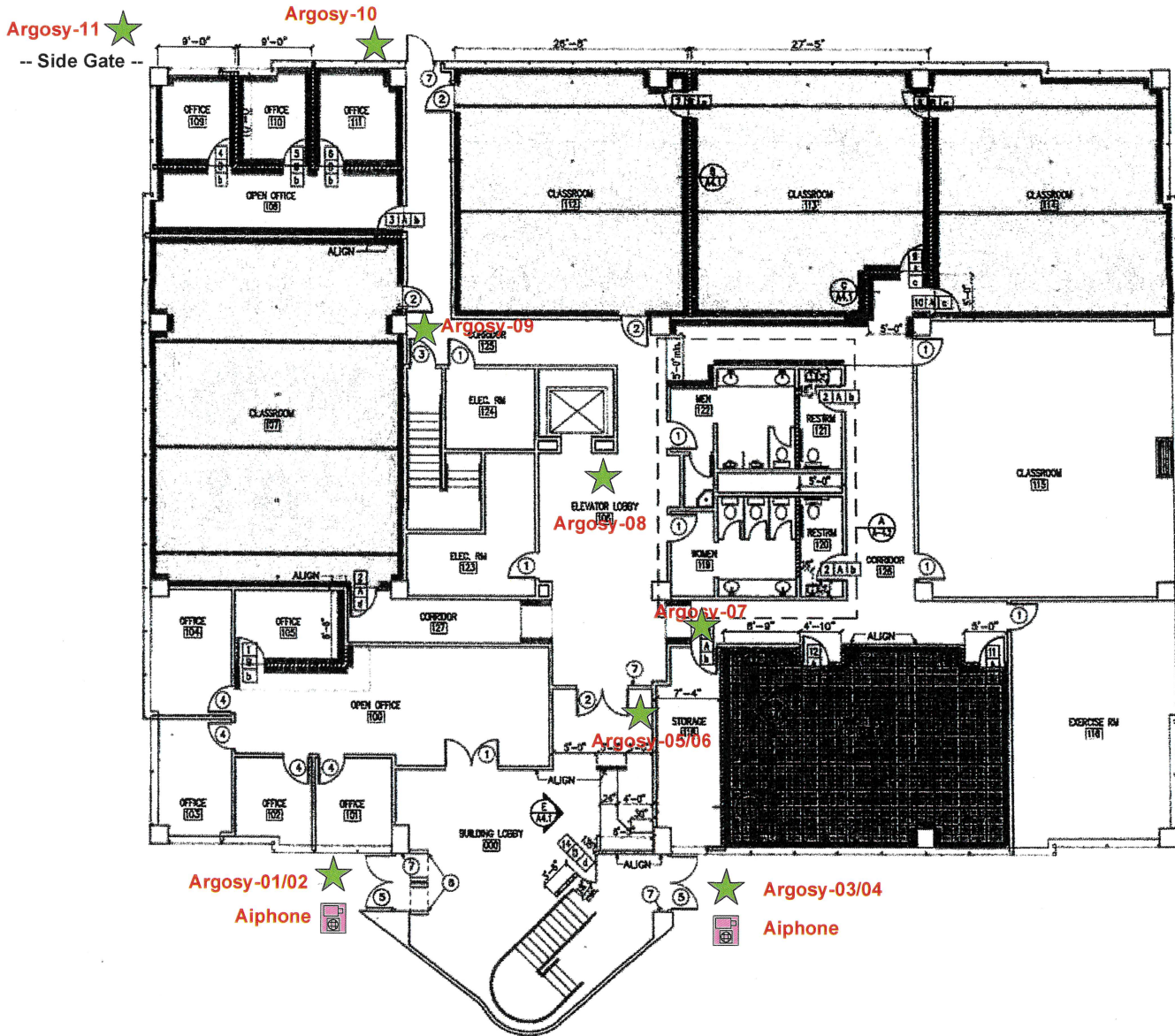
Bidders are hereby notified that they shall make any necessary adjustments in their bid on account of this Addendum. It will be construed that each Bidder's bid is submitted with full knowledge of all modifications and supplemental data specified herein.

Sincerely,



Patricia Mccaughey
Director, Business Operations

Attachments



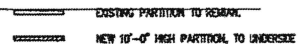
FIRST FLOOR CONSTRUCTION PLAN

DOOR LEGEND

PARTITION LEGEN



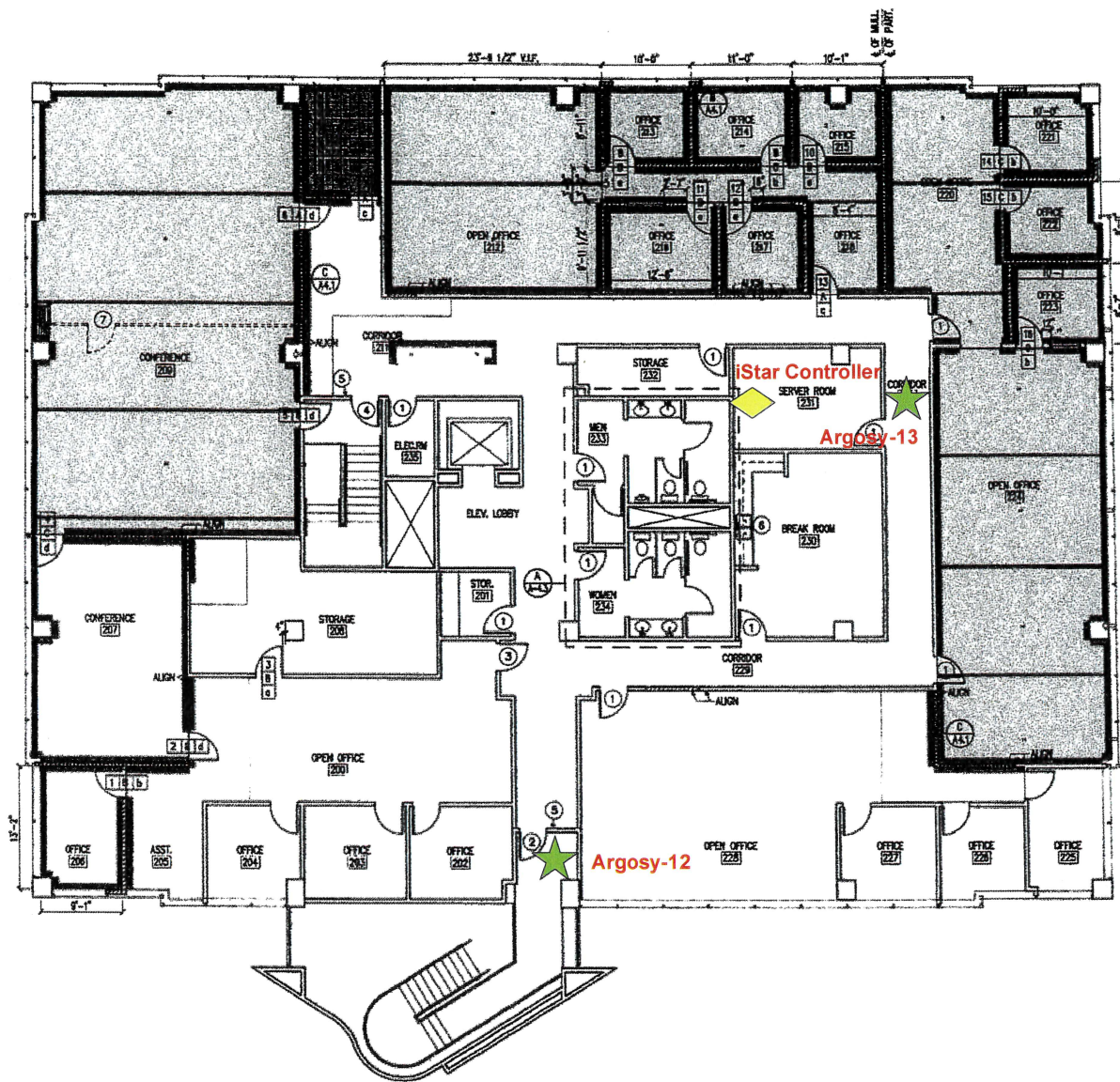
page 1
1. HANDLES, PULLS, LATCHES, LOCKS AND OTHER OPERABLE PARTS ON DOORS & GATES THAT ARE IN A PATH OF TRAVEL SHALL BE INSTALLED WITH THE HANDLE AND PULL ON THE INSIDE UNLESS OTHERWISE INDICATED.



LEGEND

- iStar Controller
- RP40 Reader
- Contacts
- Aiphone

Argosy – First Floor



SECOND FLOOR CONSTRUCTION PLAN

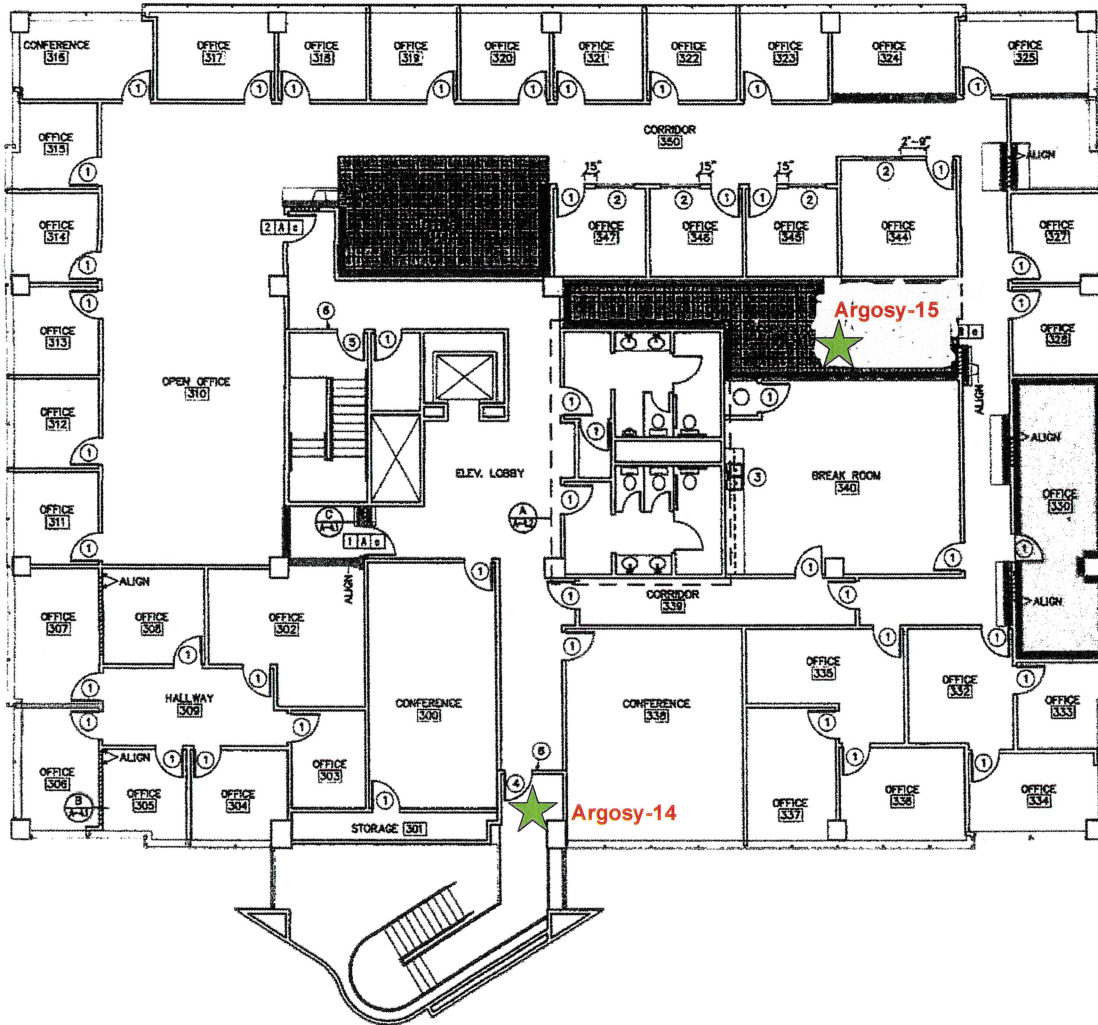
PARTITION LEGEND

DOOR LEGEND

Argosy – Second Floor

----- LEGEND -----

-  iStar Controller
-  RP40 Reader
-  Contacts
-  Aiphone



THIRD FLOOR CONSTRUCTION PLAN

PARTITION LEGEND

- EXISTING PARTITION TO REMAIN.
- NEW 10'-0" HIGH PARTITION, TO UNDERSIDE OF EXISTING CEILING. SEE DETAIL 'B/A-4.1'.
- NEW FULL-HEIGHT PARTITION BY SOUND-BATT. INSUL. SEE DETAIL 'B/A-4.1'.

DOOR LEGEND

- 1 DOOR NUMBER
 - A DOOR TYPE
 - A EXISTING 3'-0"x8'-0", 20-MIN. RATED DOOR & ASSEMBLY RELOCATED.
- page 1

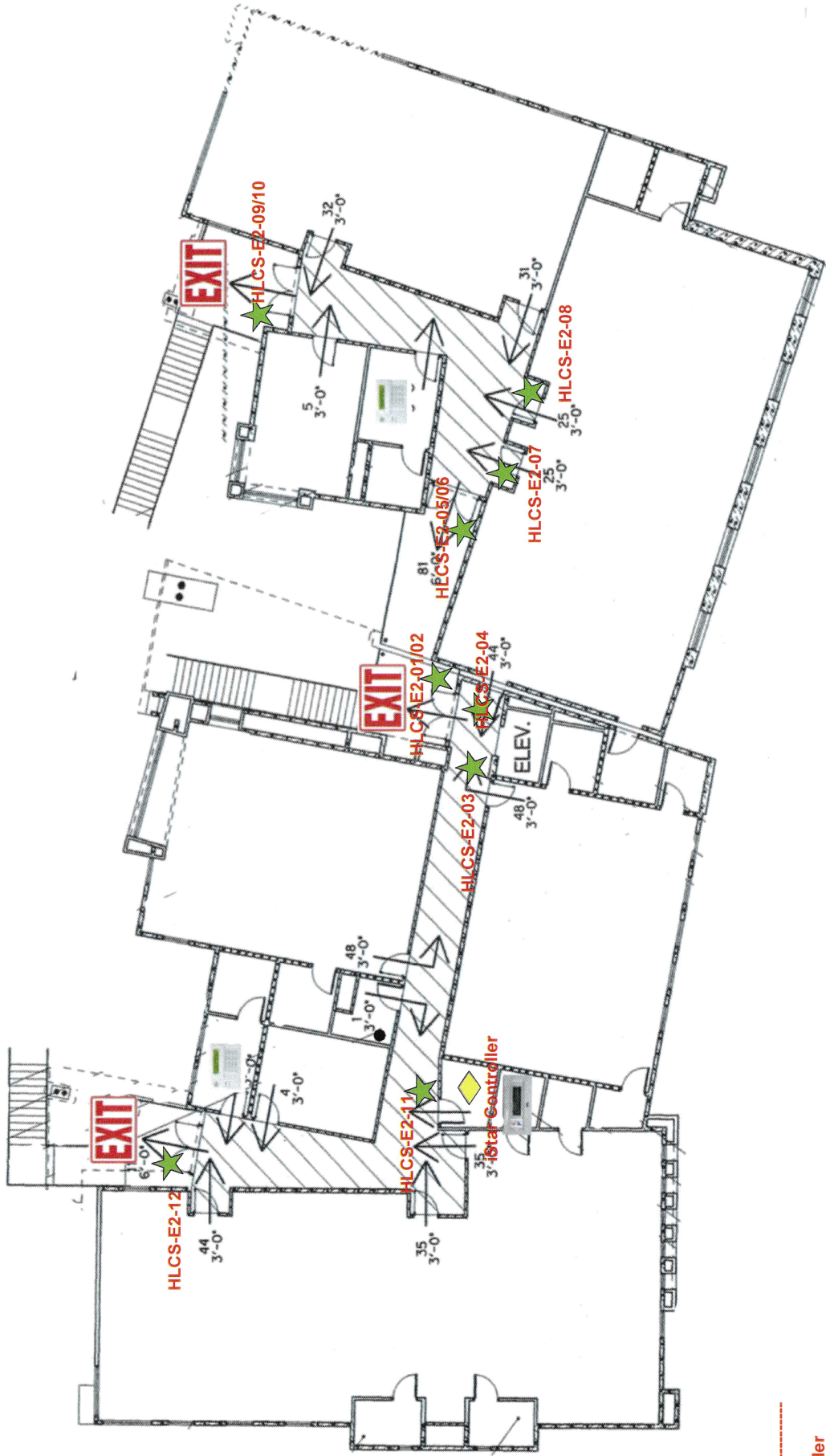
1. HANDLES, PULLS, LATCHES, LOCKS AND OTHER OPERABLE PARTS ON DOORS & GATES OF TRAVEL SHALL BE OPERABLE WITH ONE HAND AND SHALL NOT REQUIRE GRASPING OF THE WRIST. (119-309.4). OPERABLE PARTS OF SUCH HARDWARE SHALL BE 34" MIN. THE FRESH FLOOR OR GROUND (119-304.2.7). THE FORCE REQUIRED FOR PUSHING OR OR GATE SHALL BE MAX. 30lb FOR HINGED, SLIDING OR FOLDING DOORS. REQUIRED FR

Argosy – Third Floor

----- LEGEND -----

- iStar Controller
- RP40 Reader
- Contacts
- Iphone

Harbor Learning Center
 Building E - Second Floor
 15872 S. HARBOR BLVD
 FOUNTAIN VALLEY, CALIFORNIA
 35,352 SF



- LEGEND**
- ◆ iStar Controller
 - ★ RP40 Reader
 - ◆ Contacts
 - Aliphone

