

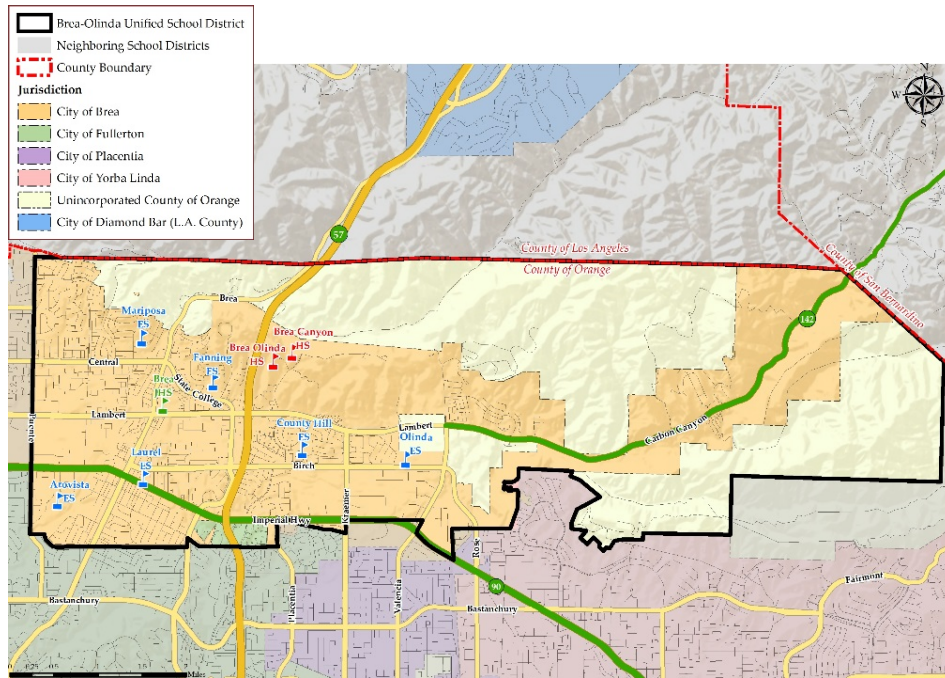
ESTABLISHMENT OF TRUSTEE AREAS AND BY- AREA METHOD OF ELECTION

Presentation to the Orange County
Committee on School District Organization
January 29, 2020

About Us

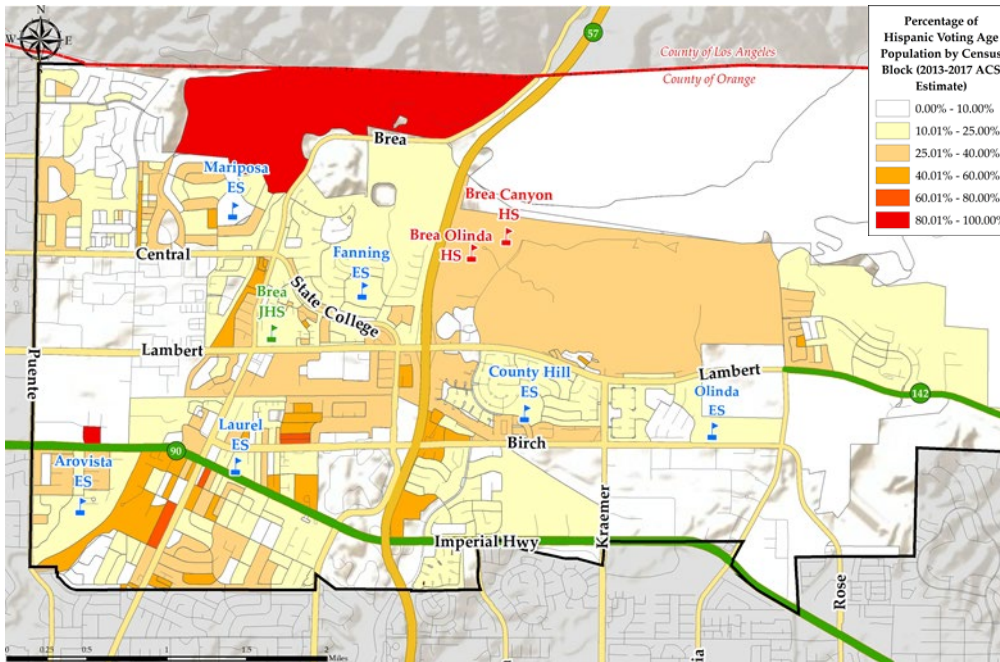
- Brea-Olinda Unified School District serves 6,000 students in school year 2018/2019 across 10 sites within the City of Brea and the surrounding unincorporated portions of Orange County
- School District undertook the transition from at-large method of election to the by-area method of election following receipt of a demand letter; Board engaged in an open process to create voting areas that ensured fair representation for all residents and reflected the desires of the community.

District Demographics – 2010 Census Data



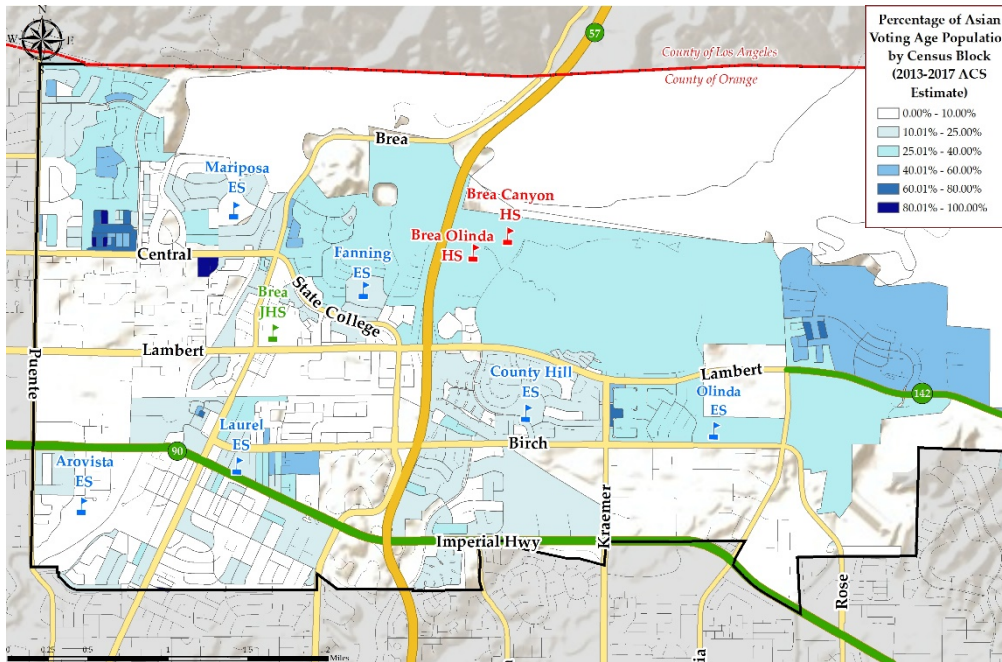
Population	Total Population		Age 18 and over	
	Total	%	Total	%
Hispanic/Latino	8,683	24.84%	6,009	22.39%
White	18,203	52.07%	14,937	55.66%
Black/ African American	459	1.31%	371	1.38%
American Indian/ Alaska Native	76	0.22%	61	0.23%
Asian	6,529	18.68%	4,867	18.14%
Native Hawaiian/ Pacific Islander	54	0.15%	38	0.14%
Other	79	0.23%	56	0.21%
Two or More Races	877	2.51%	495	1.84%
Total Population	34,960	100.00%	26,834	100.00%

District Demographics – Citizen Voting Age Population Estimates



Population	Citizen Voting Age Population	
	Total	%
Hispanic/Latino	6,167	23.71%
White	13,914	53.49%
Black/ African American	517	1.99%
American Indian/ Alaska Native	55	0.21%
Asian	4,793	18.43%
Native Hawaiian/ Pacific Islander	60	0.23%
Two or More Races	507	1.95%
Total Population	26,013	100.00%

District Demographics – Citizen Voting Age Population Estimates



Population	Citizen Voting Age Population	
	Total	%
Hispanic/Latino	6,167	23.71%
White	13,914	53.49%
Black/ African American	517	1.99%
American Indian/ Alaska Native	55	0.21%
Asian	4,793	18.43%
Native Hawaiian/ Pacific Islander	60	0.23%
Two or More Races	507	1.95%
Total Population	26,013	100.00%

Trustee Area Process

Date	Activity
May 6, 2019	Board Meeting: School District Initiates Process to Transition to By-District Elections
June 10, 2019	Board Meeting: First Pre-Map Public Hearing and Presentation
June 24, 2019	Board Meeting: Second Pre-Map Public Hearing
June – August 2019	Prepare Trustee Area Scenarios and Initiate Feedback on Waiver Request from Bargaining Units, DELAC, School Site Councils
September 9, 2019	Board Meeting: Initial Review of Scenarios
September 23, 2019	Board Meeting: First Public Hearing on Trustee Area Scenarios
October 14, 2019	Board Meeting: Second Public Hearing on Trustee Area Scenarios
October 28, 2019	Board Meeting: Board Discussion on Scenarios
November 18, 2019	Board Meeting: Board Selection of Trustee Area Map Board Consideration of Change in Election Method
December 9, 2019	Board Meeting: Public Hearing on General Waiver Request Board Consideration of General Waiver Request
January 29, 2020	County Committee on School District Organization Holds a Public Hearing and Considers Approval of Change in Election Method and Trustee Area Map
March 2020	State Board of Education Meeting; Waiver Application Consideration Cooperative Strategies sends Final Trustee area Map to the County Registrar of Voters
November 2020	First Election Held Utilizing Trustee Areas

Considerations in Trustee Areas



Each area shall contain nearly equal number of inhabitants



Follow man-made and natural geographic features, as much as possible



Drawn to comply with the Federal Voting Rights Act



Respect incumbency, if possible



Compact and contiguous, as much as possible

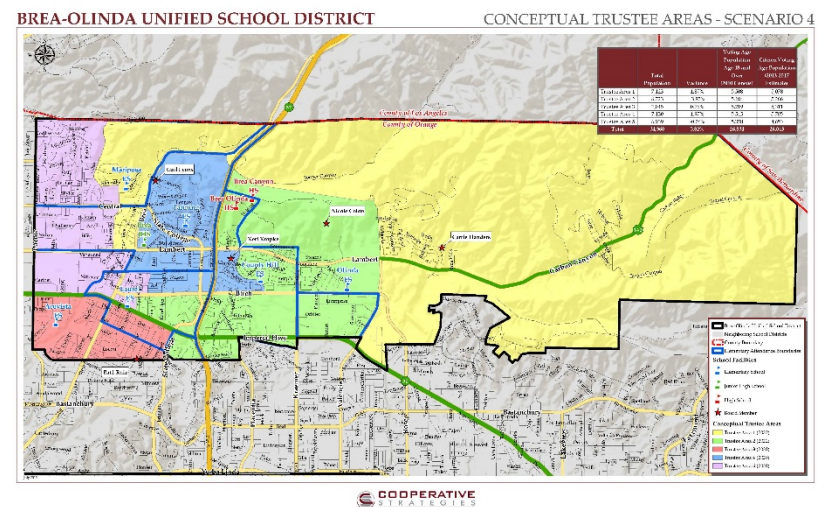
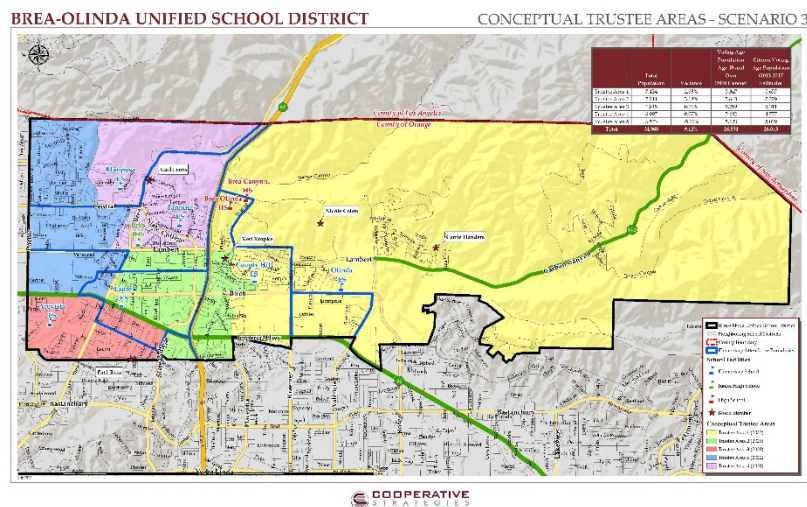
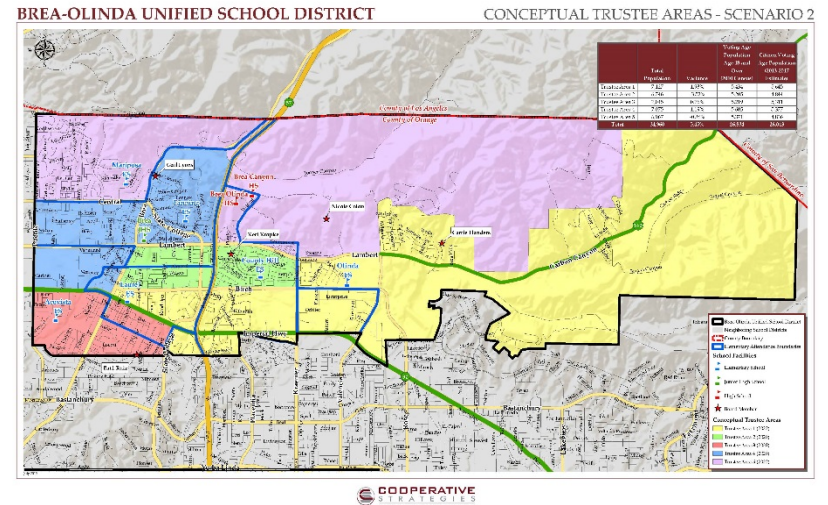
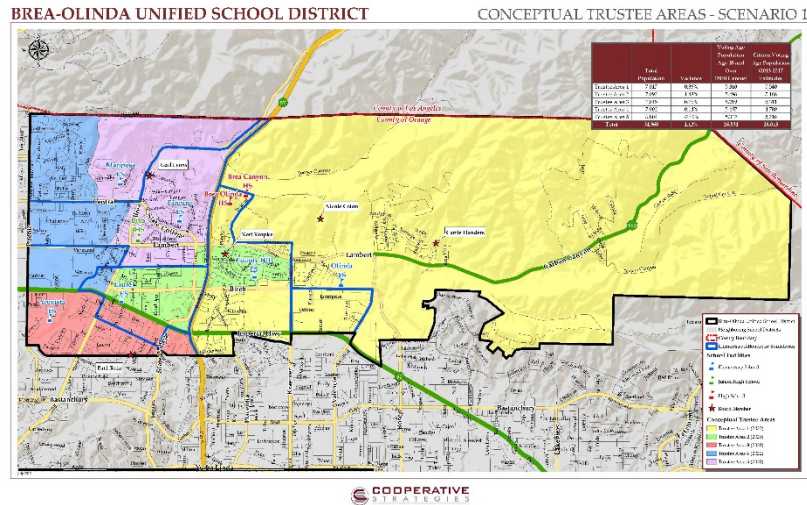


Other local considerations (i.e., school boundaries, locations of school sites)



Respect communities of interest, as much as possible

Conceptual Trustee Scenarios - Trustee Area Process



Community Outreach

Outreach and Communication Effort:

Community

- » Information provided to bargaining units and advisory committees
- » Public notices and newspaper articles

Electronic Communication

- » Promoted on Brea-Olinda USD website with maps and presentations on website

BREA OLINDA UNIFIED SCHOOL DISTRICT

Our District | Departments | Schools | Board | Resources | Why BOUSD? | Q

By-Trustee Area Elections

The Brea Olinda Unified School District Board of Education has initiated the process to change the manner in which members of the Board are elected. Currently, Brea Olinda Unified School District holds at-large elections, in which each member of the Board is elected by registered voters of the entire school district. Under the new system, Board members residing in each trustee area will be elected by the registered voters in that particular trustee area.

Community Feedback/Comments

Please click on the link below to provide feedback or comments that we may provide to our demographers as they are drawing our draft By-Trustee Area maps.

[Community Feedback Form](#)

Conceptual Trustee Area Maps

Using input provided by the Community Feedback Form, the demographer has produced a set of four conceptual maps.

The maps are based on the overall population and on the Citizens of Voting Age Population (CVAP).

It is important to note that trustee area elections have no impact on school attendance boundaries and that the maps are not and cannot be based on school attendance areas.

Public hearings will be held on September 23, 2019 and October 14, 2019. During the

Conceptual Trustee Area Maps Feedback Form

[Brea-OlindaUSD_PostMapPublicHearingPres_20190909](#)

Proposed Timeline of Events

May 6, 2019	Board Meeting: School District Initiates Process to Transition to By-District Elections
June 10, 2019	Board Meeting: First Pre-Map Public Hearing and Presentation
June 24, 2019	Board Meeting: Second Pre-Map Public Hearing
June – August 2019	Prepare Trustee Area Scenarios and Initiate Feedback on Waiver Request from Bargaining Units, DELAC, School Site Councils
September 9, 2019	Board Meeting: First Public Hearing on Trustee Area Scenarios
September 23, 2019	Board Meeting: Second Public Hearing on Trustee Area Scenarios/Public Hearing on General Waiver Request Board Consideration of General Waiver Request
October 14, 2019	Board Meeting: Final Public Hearing on Trustee Area Scenarios Board Section of Trustee Area Map Board Consideration of Change in Election Method
November 2019	County Committee on School District Organization Holds a Public Hearing and Considers Approval of Change in Election Method and Trustee Area Map
January 2020	State Board of Education Meeting: Waiver Application Consideration Cooperative Strategies sends Final Trustee area Map to the County Registrar of Voters
November 2020	First Election Held Utilizing Trustee Areas

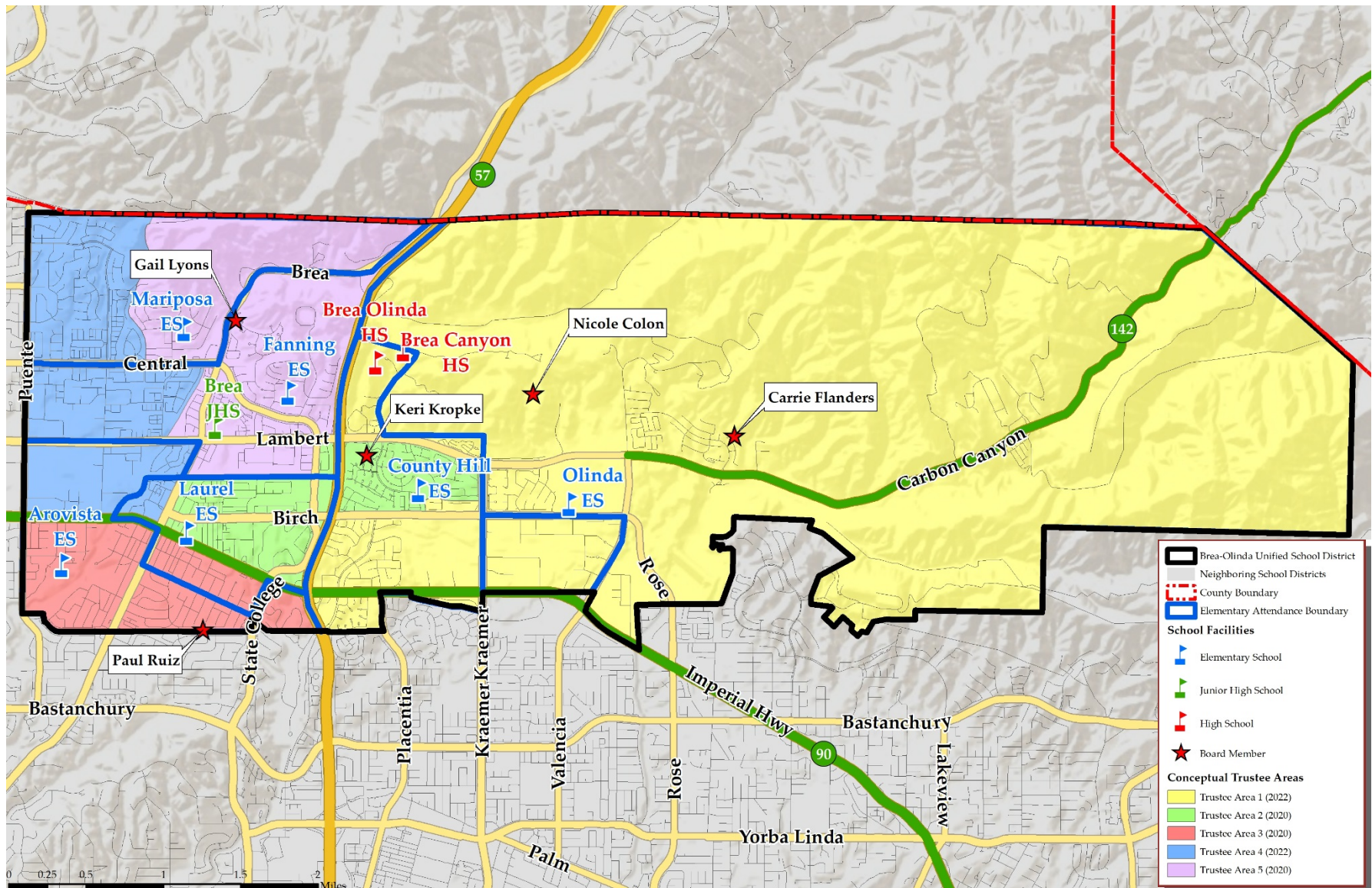
Presentations/Materials

- Resolution 18-17 Intent to comply with the CA Voting Rights Act 5.9.19
- Letter signifying Violation of CA Voting Rights Act 3.27.19
- BreaOlindaUSD_PreMapPublicHearingPres_D1
- Brea Olinda USD - CVRA Board Presentation
- Brea-Olinda USD School District Boundaries Map

November 18, 2019 Board Meeting

- ✓ Following the required public hearings on the maps and deliberation by the Board members, the Brea-Olinda Unified School District Board approved the following:
 - Selection of Scenario 1
 - Approval of Resolution No. 19-17 to be forwarded to the County Committee on School District Organization

Selection of Scenario 1



Proposed Trustee Areas (Scenario 1) - Demographics

Trustee Area	Trustee Area 1		Trustee Area 2		Trustee Area 3		Trustee Area 4		Trustee Area 5	
TP* vs. CVAP**	TP	CVAP	TP	CVAP	TP	CVAP	TP	CVAP	TP	CVAP
Population	7,017	5,540	7,092	5,166	7,045	5,311	7,002	4,780	6,804	5,216
Population Variance	25	337	100	-37	53	108	10	-423	-188	13
	0.36%	6.49%	1.43%	-0.70%	0.76%	2.08%	0.14%	-8.12%	-2.69%	0.26%
Hispanic/Latino	1,188	1,066	2,057	1,550	2,546	1,484	1,471	814	1,421	1,253
	16.93%	19.24%	29.00%	30.00%	36.14%	27.94%	21.01%	17.03%	20.88%	24.02%
White	3,531	2,542	3,243	2,585	3,703	3,132	3,843	2,781	3,883	2,874
	50.32%	45.88%	45.73%	50.04%	52.56%	58.97%	54.88%	58.18%	57.07%	55.10%
Black/African American	137	234	93	69	71	88	87	92	71	34
	1.95%	4.22%	1.31%	1.34%	1.01%	1.66%	1.24%	1.92%	1.04%	0.65%
American Indian/ Alaska Native	13	0	11	0	16	48	17	7	19	0
	0.19%	0.00%	0.16%	0.00%	0.23%	0.90%	0.24%	0.15%	0.28%	0.00%
Asian	1,920	1,546	1,472	803	526	396	1,400	1,041	1,211	1,007
	27.36%	27.91%	20.76%	15.54%	7.47%	7.46%	19.99%	21.78%	17.80%	19.31%
Native Hawaiian/ Other Pacific Islander	5	0	21	0	17	60	7	0	4	0
	0.07%	0.00%	0.30%	0.00%	0.24%	1.13%	0.10%	0.00%	0.06%	0.00%
Other	20	0	14	0	21	0	13	0	11	0
	0.29%	0.00%	0.20%	0.00%	0.30%	0.00%	0.19%	0.00%	0.16%	0.00%
Two or More Races	203	152	181	159	145	103	164	45	184	48
	2.89%	2.74%	2.55%	3.08%	2.06%	1.94%	2.34%	0.94%	2.70%	0.92%

*TP: Total Population

**CVAP: Citizen Voting Age Population

Summary

- ✓ Board has undertaken a very deliberate and methodical process in considering and adopting the change in election method before you tonight.
- ✓ Board engaged in a transparent process
- ✓ Included opportunities for community input to the process and to the maps considered by the Board
- ✓ Respectfully request that the County Committee approve the Board's resolution seeking to establish trustee boundaries and to permit a by-trustee area voting method

QUESTIONS