

Saddleback Valley

Unified School District



Presentation to the Orange County Committee on School District Organization

February 5, 2020

Robert Craven, Assistant Superintendent - Facilities, Operations, and Technology
Jonathan Salt, Fagen Friedman & Fulfrost
Larry Ferchaw, Cooperative Strategies

Who are We?

- Our District is a large TK-12 school district in southeastern Orange County
- The District serves approximately 27,000 students
- Vision: To prepare today's students to succeed in tomorrow's world.
- Our District has taken this transition to a new election system very seriously
- Throughout the process, the District has been, and continues to be, committed to transparency and educating its residents with outreach and public hearings

Background

- **August 13, 2019**
 - Demand letter received.
- **September 12, 2019**
 - Board adopts resolution to:
 - Initiate transition to by-trustee area election system
 - State intent to seek waiver of election requirement from State Board of Education

Community Outreach

Pre-Transition CVRA Informational Presentation

September 12, 2019

District Office

6:00 p.m.

Pre-Map Public Hearings

September 19, 2019

District Office

8:30 a.m.

October 17, 2019

District Office

6:00 p.m.

Public Hearings on Map Options

November 14, 2019

District Office

6:00 p.m.

November 22 2019

District Office

8:30 a.m.

December 12, 2019

District Office

6:00 p.m.

Letters to Parents

Saddleback Valley
Unified School District

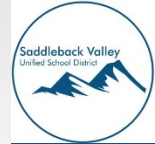


25631 Peter A. Hartman Way · Mission Viejo, California 92691
(949) 586-1234 · www.svusd.org

Board of Education

Suzie R. Swartz, President · Dr. Edward Wong, Vice President ·
Amanda Morrell, Clerk · Greg Kunath, Member · Barbara Schulman, Member

Crystal Turner, Ed.D.
Superintendent



La transición a un nuevo sistema de elección de miembros de la Junta directiva

17 de septiembre, 2019

Estimados Padres de Familia:

Les escribo para motivarlos a que participen en un proceso importante encabezado por la Junta directiva del Distrito Escolar Unificado de Saddleback Valley.

A partir del 12 de septiembre de 2019, el Distrito inició el proceso de transición del método por el cual los miembros de la Junta directiva son elegidos. Bajo el actual sistema "general," todos los electores registrados en los límites del Distrito pueden votar por los candidatos postulados para los puestos de los miembros de la Junta. Bajo el nuevo sistema propuesto, los candidatos serán elegidos por "áreas de fideicomiso." Esto significa que solo los electores dentro de un área de fideicomiso dada pueden votar por los candidatos que residen dentro de esa misma área. El objetivo de este sistema propuesto es ofrecerles mayores oportunidades de representación en la Junta a los candidatos que de otro modo no podrían ser elegidos bajo un sistema general.

La transición a este nuevo sistema requiere que la Junta celebre audiencias públicas sobre los límites del área de fideicomiso propuestos (o mapas) antes de solicitarle al Comité del Condado de Orange encargado de la Organización de los Distritos Escolares que apruebe el cambio. Si el Comité aprueba el cambio, la votación por "área de fideicomiso" se realizará a partir de las elecciones generales del 2020, con fecha del *martes 3 de noviembre, 2020*.

Antes de que el Distrito prepare y presente las opciones de los mapas preliminares, la ley requiere que el Distrito celebre dos audiencias públicas para solicitar comentarios y aportaciones sobre las posibles áreas de fideicomiso. A partir de entonces, el Distrito organizará una serie de audiencias públicas sobre las opciones de los mapas, una vez creados. **Las fechas/horas y ubicaciones de las próximas audiencias públicas se muestran al reverso de esta carta.** Están invitados a acudir a todas las que quieran. Si no pueden acudir a una audiencia o reunión y desean revisar y/o comentar sobre las posibles áreas de fideicomiso, así como sobre los mapas propuestos del "área de fideicomiso," una vez creados, no duden en enviar sus comentarios y aportaciones a la dirección de correo electrónico a continuación. Después de las audiencias públicas iniciales, los mapas propuestos serán creados y publicados en el sitio web del Distrito, <https://svusd.org/>.

Pueden enviarle cualquier comentario o pregunta por correo electrónico a Robert Craven robert.craven@svusd.org. También pueden comentar por teléfono al (949) 580-3226. Espero su participación.

Atentamente,

Crystal Turner, Ed.D.
Superintendente

Audiencias públicas (Antes de crear las opciones de los mapas)

<u>Fecha</u>	<u>Lugar</u>	<u>Hora</u>
Jueves 19 de septiembre, 2019 <i>Audiencia pública</i>	Oficina del Distrito – Sala de conferencias 25631 Peter A. Hartman Way Mission Viejo, CA 92691	8:30 a.m.
Jueves 17 de octubre, 2019 <i>Audiencia pública</i>	Oficina del Distrito – Sala de conferencias 25631 Peter A. Hartman Way Mission Viejo, CA 92691	6:00 p.m.

Audiencias públicas (Después de crear las opciones de los mapas)

<u>Fecha</u>	<u>Lugar</u>	<u>Hora</u>
Jueves 14 de noviembre, 2019 <i>Audiencia pública</i>	Oficina del Distrito – Sala de conferencias 25631 Peter A. Hartman Way Mission Viejo, CA 92691	6:00 p.m.
Viernes 22 de noviembre, 2019 <i>Audiencia pública</i>	Oficina del Distrito – Sala de conferencias 25631 Peter A. Hartman Way Mission Viejo, CA 92691	8:30 a.m.
Jueves 12 de diciembre, 2019 <i>Audiencia pública</i>	Oficina del Distrito – Sala de conferencias 25631 Peter A. Hartman Way Mission Viejo, CA 92691	6:00 p.m.

NOTA: El voto sobre los límites de las áreas de fideicomiso serán después de la tercera audiencia pública el 12 de diciembre, 2019 en la Oficina del Distrito - Sala de conferencias ubicada en el 25631 Peter A. Hartman Way, Mission Viejo, CA 92691 a las 6:00 p.m.

Comprehensive Website

Board of Education

Board Policies

Meeting Agendas

Meeting Minutes

Meeting Schedule

**Notice of Public
Hearings**

**Transition to By-Tru-
Area Election System**

NOTE: Board vote on trustee area boundaries to follow third Public Hearing: On December 12, 2019, in the District Office - Board Room located at 25631 Peter A. Hartman Way, Mission Viejo, CA 92691 at 6:00 p.m.

Additional Information

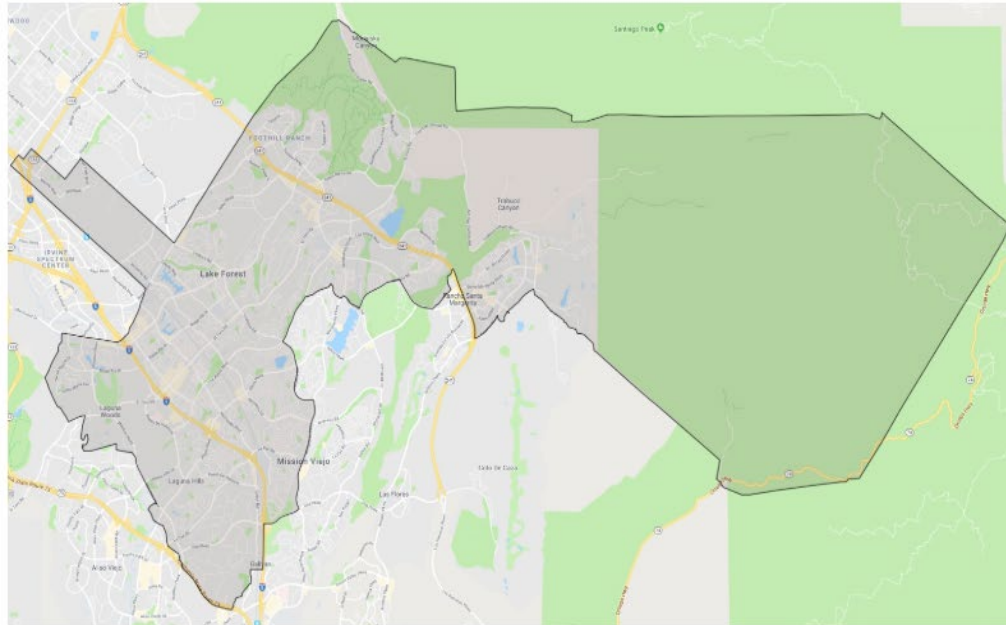
[Introduction to California Voting Rights Act \(CVRA\)](#)

[Letter to Families Regarding Proposed Election Changes in English and Spanish](#)

[Resolution No. 09:19-20 Initiate a Transition to a By-Trustee Area Election System](#)

[Public Hearing Presentation - Preparing Trustee Area Map Options](#)

Saddleback Valley Unified School District Boundaries Map



Social Media – Map Release



Saddleback Valley Unified School District

November 7 · 🌐

As SVUSD continues to move through the process of transitioning to "by-Trustee-area" elections under the legal requirements of the California Voting Rights Act (CVRA), we have reached a critical point.

The District is releasing three map options to the community for study and input. All three of the map options being considered meet the legal requirements outlined in CVRA.

To view the maps and find out more about the process go to:
<https://go.svusd.org/ByTrusteeAreaElections>

SVUSD Transition to
By-Trustee Area
Election System

👍 5

1 Share



Saddleback Valley USD

@SVUSDschools

Follow

As we continue to move through the process of transitioning to "by-Trustee-area" elections, we have reached a critical point.

The District is releasing three map options for study and input. To view the maps and find out more about the process visit:
[go.svusd.org/ByTrusteeAreaE...](https://go.svusd.org/ByTrusteeAreaElections)

SVUSD Transition to

By-Trustee Area
Election System

11:33 AM - 8 Nov 2019

1 Retweet



Map Release

MAP OPTIONS FOR CVRA TRANSITION FROM "AT-LARGE" TO "BY-TRUSTEE AREA" ELECTIONS



Dear Saddleback Valley USD Community:

As the District continues to move through the process of transitioning to "by-Trustee-area" elections under the legal requirements of the California Voting Rights Act (CVRA), we have reached a critical point. The District is releasing three map options to the community for study and input. All three of the map options being considered meet the legal requirements outlined in CVRA.

The District is providing three in-person opportunities to the community to review and provide feedback over the next five weeks before the Board of Education votes on December 12, 2019 for a map that will be put into effect for the November 2020 Board elections.

This release of map options comes at the end of the "Pre-Map" period wherein the District engaged the community with two public hearings to solicit input before drawing map options.

Each map option for consideration:

1. Meets the equal population requirement (that each trustee area have equal population with up to a 10% variance);
2. Increases the voting power of the largest protected classes in the District (Hispanic/Latino; Asian; and African American) by Citizen Voting Age Population (CVAP/eligible voters) in at least one Trustee Area based on up-to-date CVAP statistics compared to District-wide averages;
3. Complies with the Federal Voting Rights Act;
4. Respects communities of interest as much as possible;
5. Is compact and contiguous as much as possible; and
6. Follows man-made and natural geographic features as much as possible.

Upcoming Meeting and Hearing Schedule

November 14, 2019 – 1st Public Hearing regarding Map Options at 6:00 p.m. during the Governing Board meeting at the District Office Board Room (25631 Peter A. Hartman Way, Mission Viejo, CA 92691)

November 22, 2019 – 2nd Public Hearing regarding Map Options at 8:30 a.m. during the Governing Board meeting at the District Office Board Room (25631 Peter A. Hartman Way, Mission Viejo, CA 92691)

December 12, 2019 – 3rd Public Hearing regarding Map Options at 6:00 p.m. and adopt map option during the Governing Board meeting at the District Office Board Room (25631 Peter A. Hartman Way, Mission Viejo, CA 92691)

The Saddleback Valley community is invited to attend as many meetings and public hearings as you would like. If you cannot attend and wish to review and/or comment regarding the proposed map options under consideration, please submit your comments and feedback to Robert Craven at robert.craven@svusd.org or comment via telephone at (949) 580-3226. All map preference feedback will be relayed to the Board prior to its discussion and adoption of a map option.

We look forward to your continued participation!

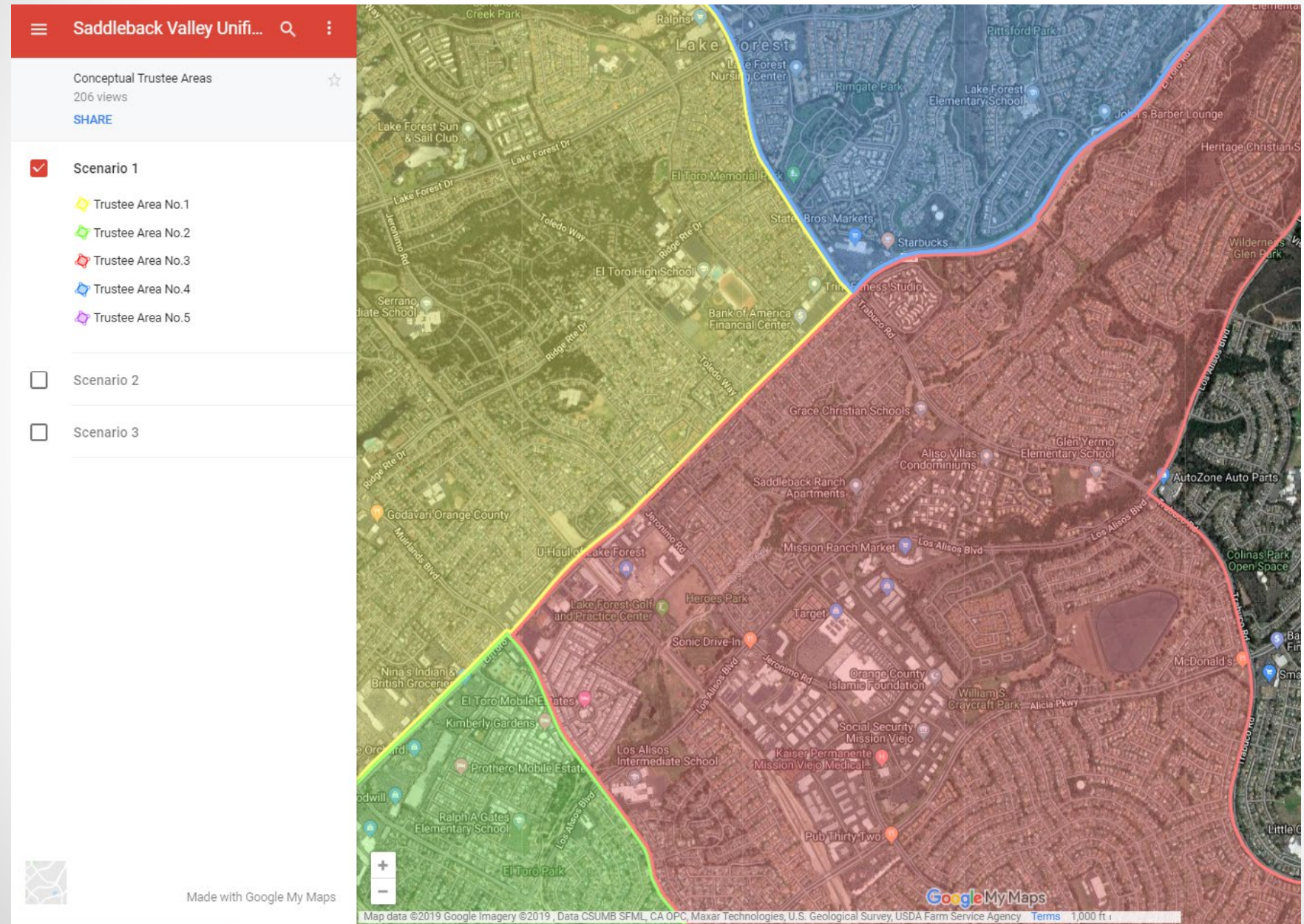
[Map Scenario 1](#)

[Map Scenario 2](#)

[Map Scenario 3](#)

All Map Options Are Also Available For Review Via [This Interactive Map](#)

Online Interactive Map



Preparing Trustee Voting Area Plans: Federal & State Requirements

- **Federal Requirements**

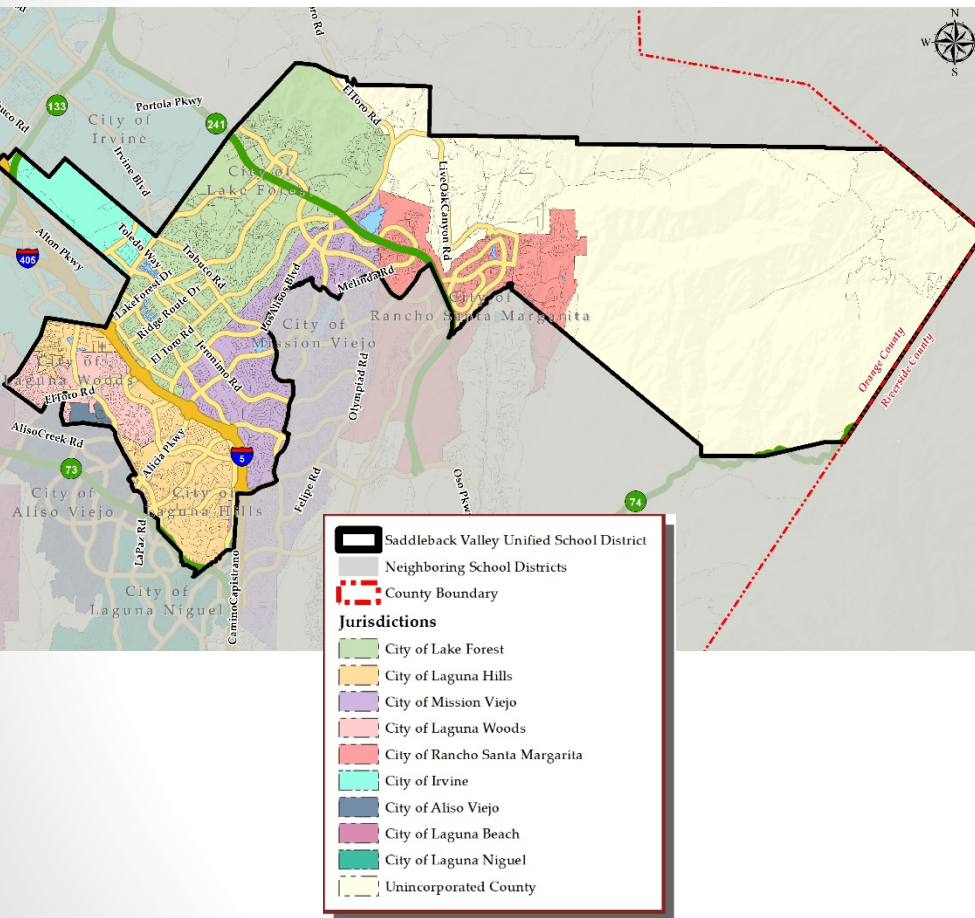
- *Equal Population*
 - As equal as practical based on data and criteria from most recent Census Total Population
- *Minority Voting Rights*
 - No Discriminatory Purpose; No Vote Dilution
- *Equal Protection*
 - Race must not be a predominant factor

- **State Requirements**

- Topography
- Geography
- Cohesiveness, Contiguity, Integrity, & Compactness of territory
- Community of Interest

District's Demographics

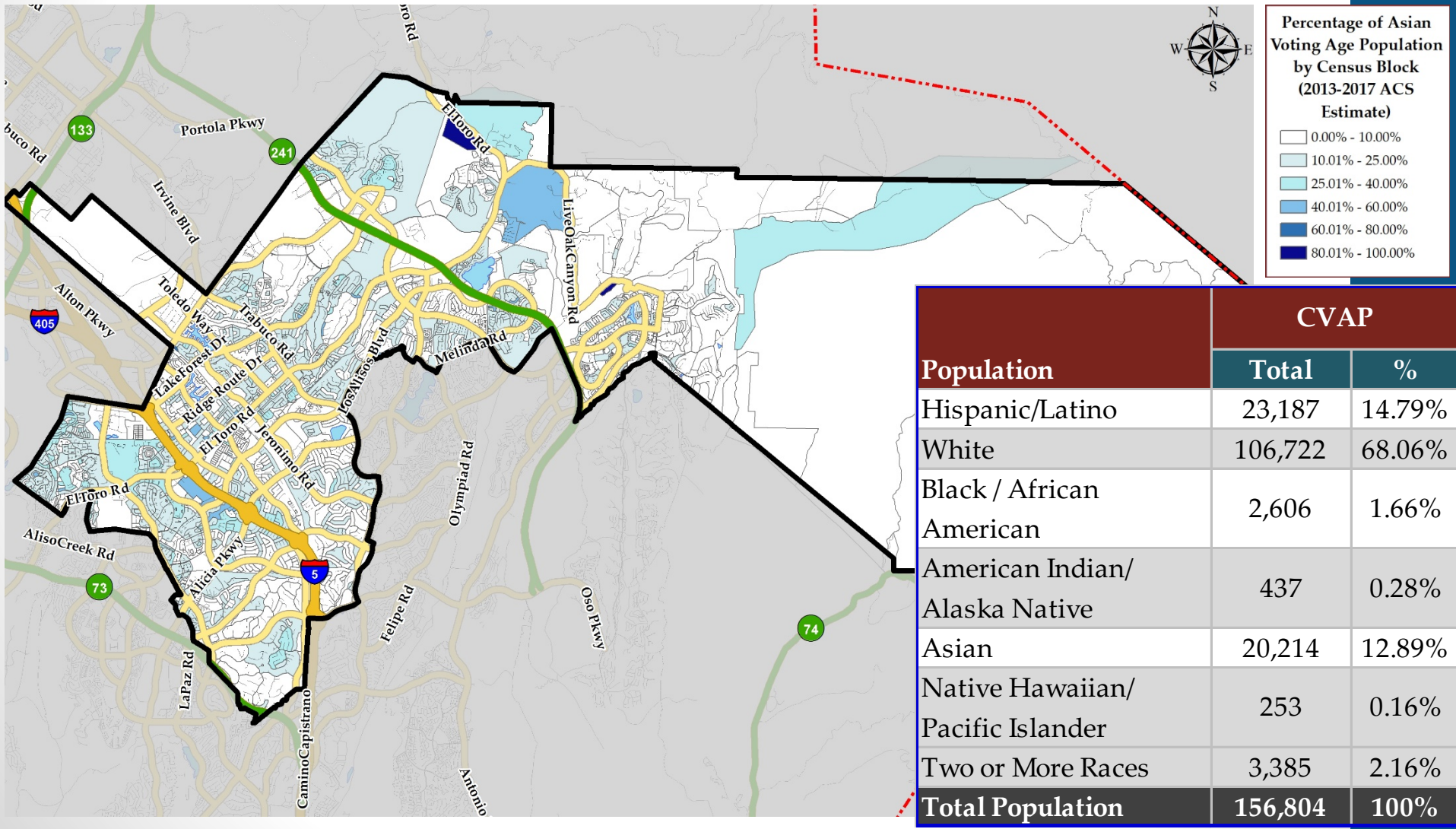
Census Data (Total Population)



Population	Total Population		Age 18 and over	
	Total	%	Total	%
Hispanic/Latino	43,359	20.81%	29,147	18.14%
White	131,811	63.27%	106,437	66.26%
Black / African American	2,872	1.38%	2,319	1.44%
American Indian/Alaska Native	446	0.21%	356	0.22%
Asian	22,744	10.92%	18,462	11.49%
Native Hawaiian/Pacific Islander	377	0.18%	311	0.19%
Other	433	0.21%	293	0.18%
Two or More Races	6,277	3.01%	3317	2.06%
Total Population	208,319	100%	160,642	100%

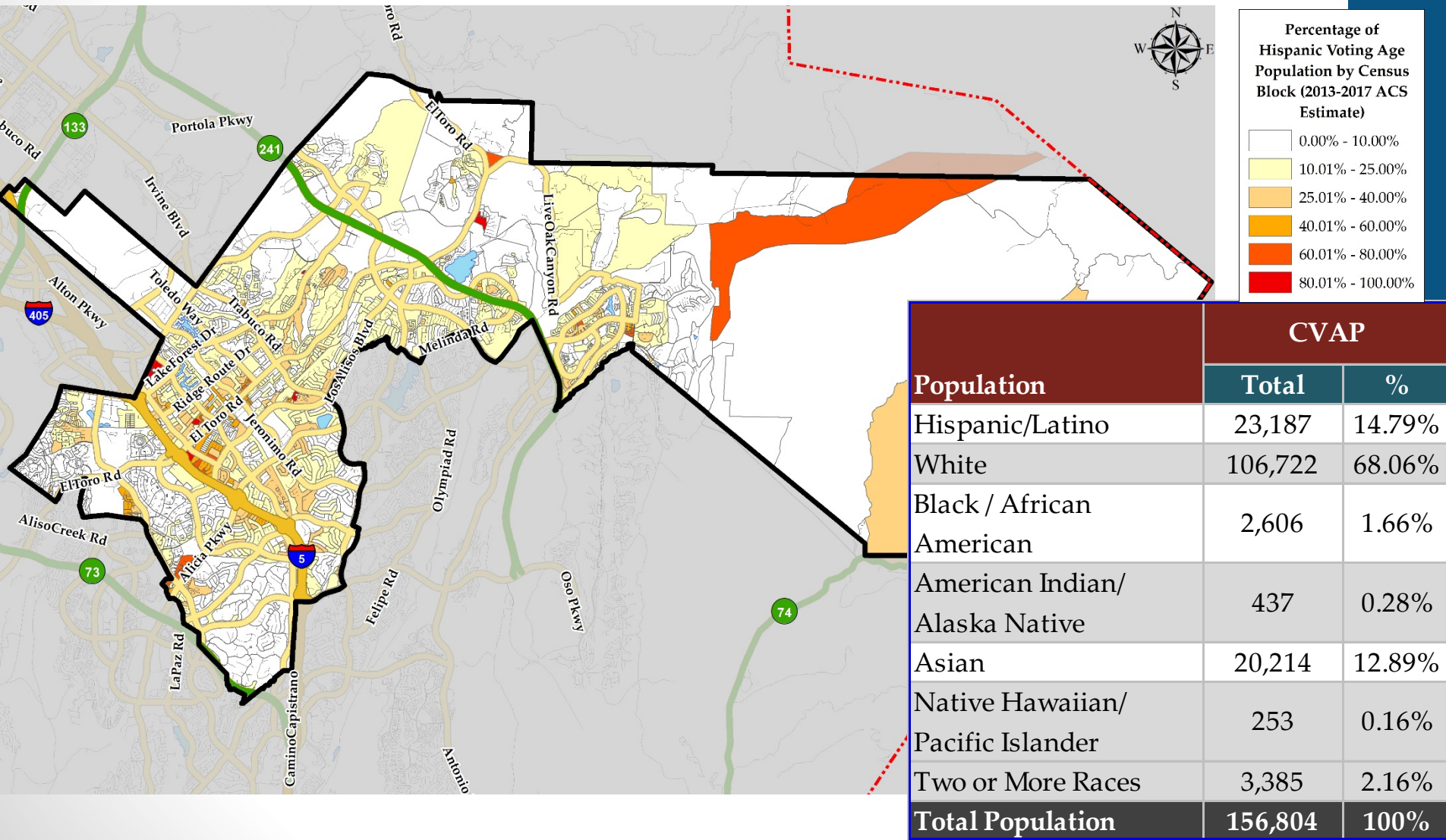
District's Demographics

Asian Citizen Voting Age Population Estimates

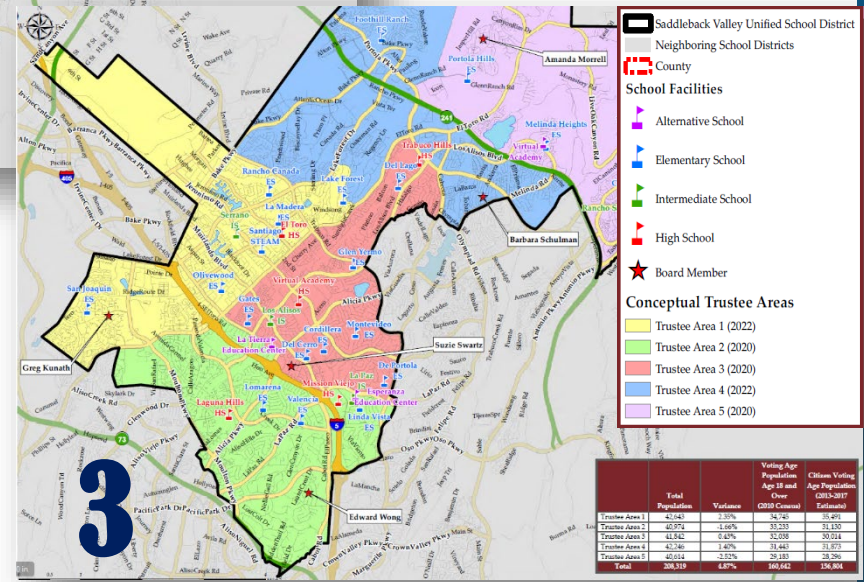
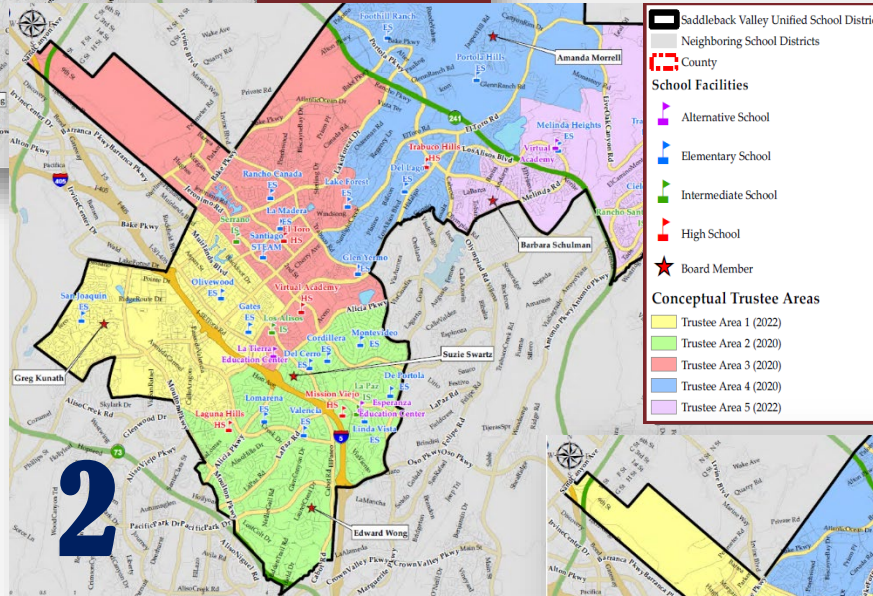
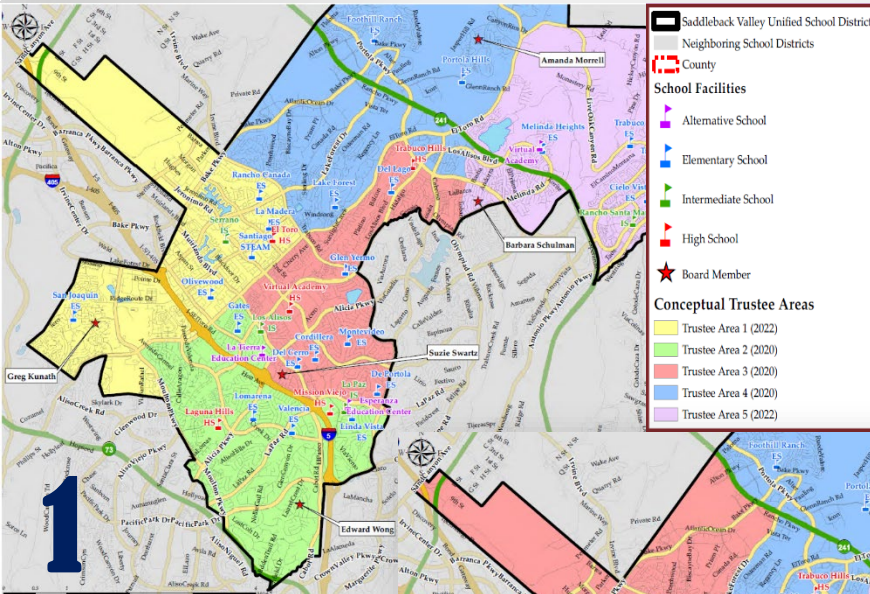


District's Demographics

Hispanic Citizen Voting Age Population Estimates



Summary of Plans



	Total Population	Voting Age Population Age 18 and Over (2019 Census)	Citizen Voting Age Population (2013-2017 Estimates)
Trustee Area 1	41,414	20,374	11,135
Trustee Area 2	40,974	20,974	11,135
Trustee Area 3	41,842	20,974	11,135
Trustee Area 4	42,740	20,974	11,135
Trustee Area 5	40,024	20,974	11,135
Total	208,719	104,364	55,670

Adopted Plan: CVAP Data

Citizens by Voting Age Population Estimate (2013-2017)

	Trustee Area 1	Trustee Area 2	Trustee Area 3	Trustee Area 4	Trustee Area 5
Population	33,576	31,267	31,101	31,304	29,556
Population Variance	2,215	-94	-260	-57	-1,805
	7.06%	-0.30%	-0.83%	-0.18%	-5.75%
Hispanic/Latino	4,921	4,310	5,339	4,232	4,385
	14.66%	13.78%	17.17%	13.52%	14.84%
White	22,493	21,633	21,050	20,857	20,689
	66.99%	69.19%	67.68%	66.63%	70.00%
Black/ African American	451	560	359	625	611
	1.34%	1.79%	1.15%	2.00%	2.07%
American Indian/ Alaska Native	69	140	150	68	10
	0.21%	0.45%	0.48%	0.22%	0.03%
Asian	4,968	4,080	3,516	4,638	3,012
	14.80%	13.05%	11.31%	14.82%	10.19%
Native Hawaiian/ Other Pacific Islander	47	38	119	10	39
	0.14%	0.12%	0.38%	0.03%	0.13%
Other	0	0	0	0	0
	0.00%	0.00%	0.00%	0.00%	0.00%
Two or More Races	627	506	568	874	810
	1.87%	1.62%	1.83%	2.79%	2.74%

How & Why the Board Made its Final Decision

- Selected the option that was determined to be in the best interests for the District
- **Scenario 1** determined:
 - Best fit for the District's culture
 - Made sense geographically and grouped communities
 - Improved CVAP for Hispanic, Asian, and African American blocs



Complies with both the *spirit* and *letter* of the CVRA laws

Next Steps

- **Winter-Spring 2019-2020:**
 - Seek Approval from the Orange County Committee on School District Organization
 - Receive waiver approval from SBE
- **November 2020:**
 - Hold by-trustee area elections
 - 2020: Areas 2, 3, 4
 - 2022: Areas 1, 5

