

Getting Started with the State Seal of Civic Engagement

September 16, 2024



CALIFORNIA DEPARTMENT OF EDUCATION
Tony Thurmond, State Superintendent of Public Instruction

Introductions

Havana Cheng, Staff Services Analyst

Sarah Smith, Education Programs Consultant

Julia Agostinelli, Education Administrator

Professional Learning Innovations Office (PLIO)

Professional Learning Support Division



Agenda

Welcome and Housekeeping

Overview

Statewide Criteria and Eligibility

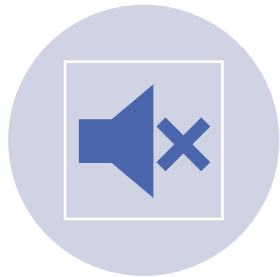
Local Implementation

Insignia Requests and Data Reporting

Related Opportunities, Questions, and Contact Information



Housekeeping



Webinar participants have been placed on mute.



Webinar will be recorded.



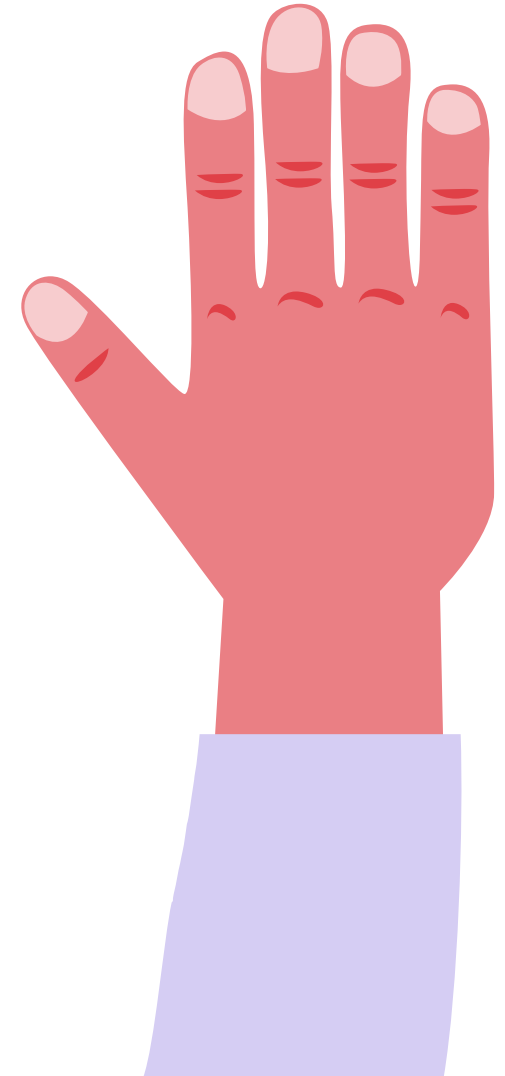
Question/Answer session toward the end of the webinar.



Slide deck and recording will be shared via email after the webinar.



What is the State Seal of Civic Engagement?



The State Seal of Civic Engagement

The State Seal of Civic Engagement (SSCE) is a recognition conferred by the State Superintendent of Public Instruction for California public school students in grades ten, eleven, or twelve who demonstrate excellence in civics education and participation, as well as an understanding of the United States Constitution, the California Constitution, and the democratic system of government.



Background and Purpose

Assembly Bill 24 (2017) instructed the California Department of Education (CDE) to develop a set of criteria to recognize students who have demonstrated excellence in civic education.

“It is the intent of the Legislature to establish a SSCE to encourage, and create pathways for, pupils in elementary and secondary schools to become civically engaged in democratic governmental institutions at the local, state, and national levels.”

-California *Education Code (EC)*
Section 51470

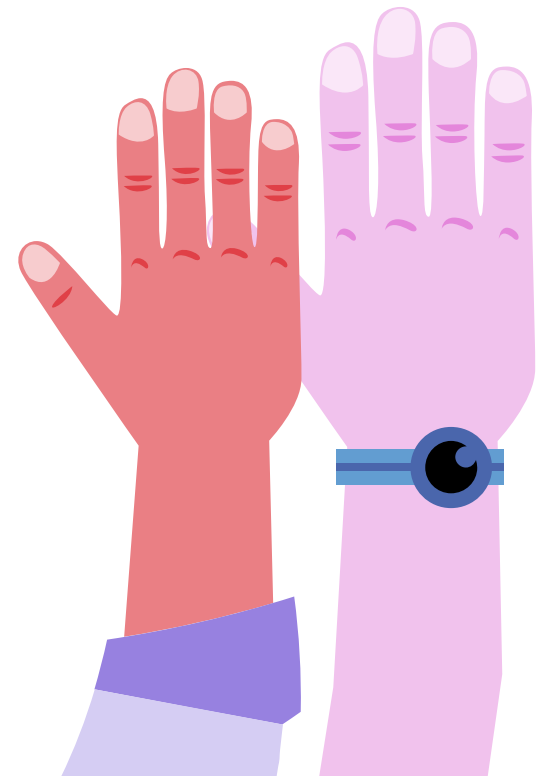


Timeline

Date	Event
October 2017	AB 24 signed into law.
November 2018–April 2019	Development of draft SSCE statewide criteria and guidance.
July and September 2019	Draft criteria presented to the State Board of Education (SBE).
September 2020	Final criteria adopted by the SBE.
2020–21	First year of statewide SSCE implementation.



What are the statewide criteria for earning a State Seal of Civic Engagement?



Statewide Criteria (1)

To be eligible to earn a SSCE, students must be enrolled in grade ten, eleven, or twelve at a participating local educational agency (LEA), and must fulfill each of the following five statewide criteria:

1. Be engaged in academic work in a productive way.
2. Demonstrate a competent understanding of United States and California constitutions; functions and governance of local governments; tribal government structures and organizations; the role of the citizen in a constitutional democracy; and democratic principles, concepts, and processes.



Statewide Criteria (2)

The student must:

3. Participate in one or more informed civic engagement project(s) that address real-world problems and require students to identify and inquire into civic needs or problems, consider varied responses, take action, and reflect on efforts.



Statewide Criteria (3)

The student must:

4. Demonstrate civic knowledge, skills, and dispositions through self-reflection.
5. Exhibit character traits that reflect civic-mindedness and a commitment to positively impact the classroom, school, community and/or society.



Implementation Guidance

- The Implementation Guidance (<https://www.cde.ca.gov/618335>) offers ideas, questions, and considerations to structure local SSCE requirements.
- The “Local Programming” presentation on the SSCE web page (<https://www.cde.ca.gov/620836>) breaks down criteria with questions from the implementation guidance.

SSCE Implementation Guidance

Considerations to structure local State Seal of Civic Engagement (SSCE) implementation.

The following guidance for each SSCE criterion offers ideas and considerations to structure local implementation. Each local educational agency (LEA) can determine how to implement the criteria in its own local context to ensure maximum accessibility for all students, at all grade levels, including those in alternative school settings. Local governing boards are encouraged to approve or adopt their own policies regarding implementation of the SSCE criteria.

[Criteria 1](#) | [Criteria 2](#) | [Criteria 3](#) | [Criteria 4](#) | [Criteria 5](#)

Criteria 1

Be engaged in academic work in a productive way.

Districts may establish their own requirements for a student to be considered engaged in work in a productive way. Examples include, but are not limited to:

- Being enrolled in and attending classes, and/or on track to graduate or earn a Certificate of Completion—using district or state requirements
- Demonstrating academic improvement for all youth (challenges faced by students who are English Learners [EL], homeless, in foster care, incarcerated, and/or in alternative school settings, should be considered)
- Building constructive relationship(s) with the school community, (e.g., prosocial behaviors)
- LEAs may also consider using student Individualized Education Programs (IEPs) to specify levels needed for students to be on track to receive a Certificate of Completion or otherwise productively engaged in academic work.



Who is eligible to earn a State Seal of Civic Engagement?



Institutional Eligibility

The SSCE is offered at the LEA level. This includes county offices of education (COEs), school districts, charter schools.

Individual school sites may not offer the SSCE without it also being available district- or county-wide.

Private schools are not eligible to offer the SSCE; however, they may establish their own civic recognition opportunities.

Students schooled through an Independent Study Program, with oversight of a credentialed teacher in a participating LEA, are eligible.



Student Eligibility

Any grade ten, eleven or grade twelve pupil enrolled in California public schools, direct funded charter schools, the juvenile justice system, and/or in alternative school settings at a *participating* LEA is eligible to earn a SSCE.

Students must demonstrate attainment of all five statewide criteria, as well as any locally-adopted requirements, to be eligible for an SSCE.

Students may not earn an SSCE before grade ten. However, LEAs are encouraged to develop local means of recognition for younger students as a pathway to earning the SSCE, such as promotion certificates and/or cords.



Eligible Documents

- Eligible documents include:
 - High school diploma
 - Alternative high school diploma (*EC* 51225.31); <https://www.cde.ca.gov/613733>
 - General Educational Development Certificates
 - Certificates of Completion (*EC* Section 56390)
 - Transcripts (grades eleven or twelve)



The Insignia

- Each eligible student receives one gold-embossed insignia to affix to one eligible document.
- An extra embossed insignia, or a black and white insignia for placement on transcripts, is **not** provided.
- LEAs may develop local forms of recognition (local seals, certificates, transcript notations, etc.).



How is the State Seal of Civic Engagement implemented locally?



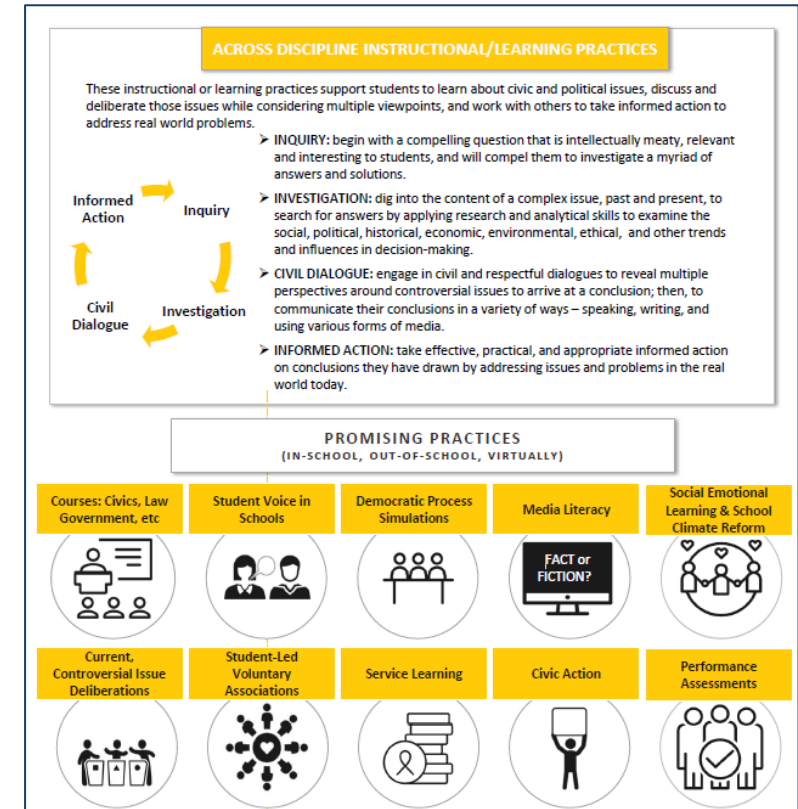
Local Guidelines (1)

- The SSCE is a local opportunity, and the process through which a student earns a SSCE differs from LEA to LEA.
- Leveraging Equity and Access in Democratic Education (UCLA) reports highlight examples of local programs:
 - Breaking New Ground with California's SSCE—Lessons from Year 1: <https://bit.ly/SSCEYEAR1>
 - California's Commitment to K–12 Civic Learning: A 2022 Assessment: <https://bit.ly/CIVICLEARN>



Local Guidelines (2)

- The Authentic Preparation Today working group, which also developed the image used on the statewide insignia, created resources to support LEAs in developing local guidelines, including an implementation roadmap: <https://bit.ly/APTWG>



Sample General Process

Create Local Team, Develop Board Resolution, Take Inventory

Adopt Statewide SSCE Criteria, Local Criteria (Optional)

Design and Implement Programming Components

Request Insignias from the CDE and Distribute to Students



Create Implementation Team

- Create local implementation teams to coordinate development of criteria, policies, and procedures to earn the SSCE:
 - County, district, and site leadership
 - Local educators representing a variety of subjects
 - Students
 - Community representatives and local officials
- Civic Engagement Research Group (CERG) Educating 4 Democracy SSCE planning packet:
<https://bit.ly/CERGToolkit>



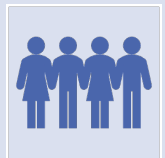
Develop Board Resolution



Develop a county, district, or charter site board resolution supporting the statewide SSCE criteria with the intent to design a process for earning the SSCE locally (optional).



Consider including Local Control and Accountability Plan language related to civic engagement opportunities.



Los Angeles COE SSCE Collaborative (https://bit.ly/LACOE_SSCE): sample governing board resolutions and other implementation resources.



Take Inventory

- Take inventory of the LEA's civic assets and needs:
 - What opportunities and community connections already exist?
 - What courses cover civic curriculum or civic projects, and where is there room to infuse this in other subject areas?
 - Who already participates, and what barriers to entry exist?
- The CERG Educating 4 Democracy SSCE planning packet (<https://bit.ly/CERGToolkit>) includes forms and guiding questions to help implementation teams take inventory.



Develop and Adopt Local Criteria



LEAs are also encouraged, wherever possible and practical, to develop criteria that reflect local communities and school populations.



Local criteria must be aligned to the statewide criteria. This criteria can be crucial in ensuring maximum accessibility for all students, including students in alternative school settings.



The Santa Clara COE SSCE web page (<https://bit.ly/SSCOESSCE>) includes a variety of resources to support development of accessible local SSCE programs.



Design Local Requirements and Procedures

- The LEA should develop the local requirements and procedures that students will go through to earn a SSCE:
 - Course enrollment, grade requirements, local assessments
 - Civic engagement project guidelines and procedures
 - Procedures for self-reflection and external recommendations
 - Application, insignia distribution, and record-keeping processes
 - Any additional local requirements or processes
- Sacramento City Unified School District local criteria and procedures: <https://bit.ly/scusdssce>



Special Considerations

Accessibility

- Continuation schools, juvenile justice, special education, English learners, etc.

Depth

- Elementary and middle schools
- Long-term, evolving engagement

Interdisciplinarity

- Involve other disciplines in addition to History–Social Science (HSS)

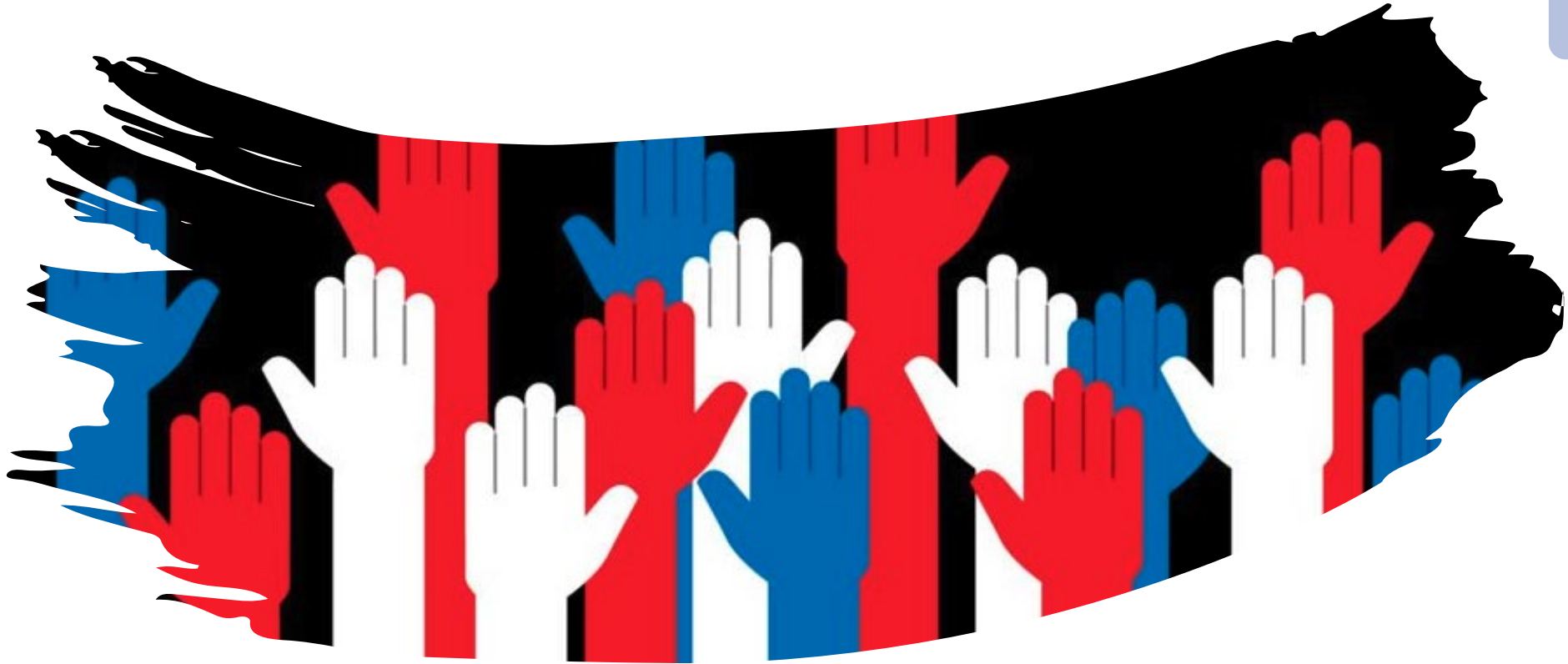


Encourage Pathways

- The Orange County Department of Education, along with the San Diego COE, created a kindergarten through grade eight (K–8) pathway program wherein participating districts can honor students in grades three, five, and eight:

<https://bit.ly/OCDECivics>





How do Local Educational Agencies request insignias?



Insignia Request Form

- Updated and posted each fall on SSCE web page:
<https://www.cde.ca.gov/620836>
- Used for new, additional, and corrected requests.
- Requests come from the participating LEA.
- No deadline; requests are processed on an ongoing basis.
 - Request insignias from the CDE at least four weeks before they will be needed.
 - Most requests are submitted from April 1–June 15.



Suggested Record Keeping

Local student
requirements

Site staff leads
or advisors

Community
partners

Pathway
agreements

Timeline or list
of activities

Student
applications

Summary of
evidence

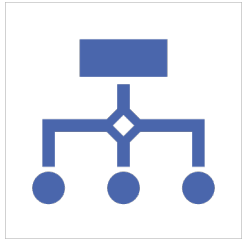
Participating
students

Insignia
distribution

Students who
did not qualify



Statewide Data Reporting



CDE captures and reports data provided by LEAs through the Insignia Request Form. Student names are not collected.



CDE publishes this statewide data in a spreadsheet on the SSCE web page each fall.



Spreadsheets are available dating back to the 2020–21 school year.



Student-Level Data Reporting



This summer, the CDE collected data on the individual students who earn the SSCE for determining its use in the College and Career Indicator (CCI) on the California School Dashboard.



This new data collection is based on an SBE request to the CDE to consider the inclusion of civic engagement in the CCI.



Visit the California Longitudinal Pupil Achievement Data System web page for updates: <https://www.cde.ca.gov/621911>



Background information is available from the SBE Items Related to the SSCE web page: <https://www.cde.ca.gov/618330>





**What additional resources
are available?**



Additional Civic Awards and Programs

- California Democracy School Awards: <https://bit.ly/caldemschool>
- Power of Democracy Civic Learning Initiative:
 - Civic Learning Awards: <https://bit.ly/civiclearningawards>
 - Judges in the Classroom: <https://bit.ly/JICLASSROOM>



Staying Updated

SSCE Inbox

SSCE@cde.ca.gov

HSS Listserv

To join, send a blank email message to
join-history-social-science@mlist.cde.ca.gov

CDE Twitter/X Accounts

HSS: @CaEdHSS

Professional Learning: @CaProfLearning

CDE: CaDeptEd



Thank you!

California Department of
Education

Professional Learning
Support Division

[SSCE@cde.ca.gov](mailto:ssce@cde.ca.gov)



CALIFORNIA DEPARTMENT OF EDUCATION
Tony Thurmond, State Superintendent of Public Instruction

