

2025-2026

LITERACY AND LANGUAGE

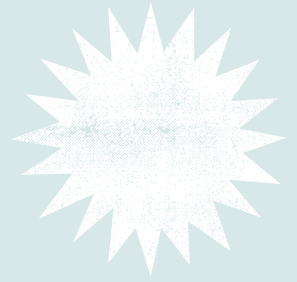


General Offerings and Custom Contracts Catalog

EDUCATIONAL SERVICES
CURRICULUM, INSTRUCTION AND
ACADEMIC ENRICHMENT



CONTENTS



Page 7
FEE STRUCTURE

Page 8
RESOURCES

Page 1

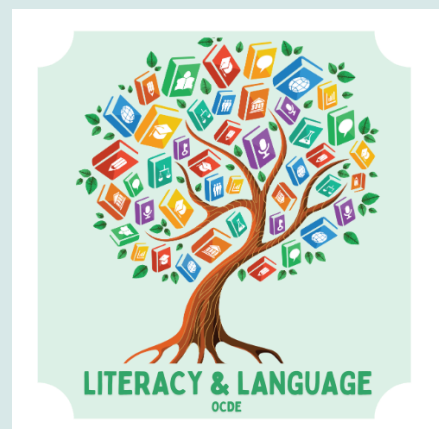
**LITERACY AND
LANGUAGE
INFORMATION**

Page 2

**GENERAL
OFFERINGS**

Page 3-6

**CUSTOM
CONTRACTS**



Literacy and Language

Meet the OCDE Literacy and Language team! OCDE's Literacy & Language services team provides expertise in research-based instruction and leadership in English Language Arts (ELA) Literacy and English Language Development (ELD). Our services are designed to support district-wide implementation of the CA State Standards anchored in the ELA/ELD Framework, MTSS and the EL Roadmap. We provide professional learning, customized support, coaching and technical assistance for educational institutions that lead to effective, standards-aligned instruction and improve instruction in literacy across all subject areas.

This catalog provides information about all our services: our general offerings and calendar, custom contracts, technical support and more! Don't see what you need? Give us a call and we would love to work with you to provide assistance.

Looking forward to working with you,
Virginia, Amber & Laurie

- **MTSS:** Inclusive Academic Instruction



- **LCAP:** Conditions of Learning, Pupil Outcomes and Pupil Engagement

Contact Information



Virginia Reischl, Ed.D.

Literacy and Language, Coordinator
Secondary
714-966-4231
vreischl@ocde.us



Amber Fleming-Morales

Literacy and Language, Coordinator
Elementary
714-668-7819
afleming-morales@ocde.us



Lauri Virtusio, Ed.D.

Literacy and Language, Coordinator
714-668-4413
lvirtusio@ocde.us

X @OCDELitLang

Instagram #OCDELitLang

bit.ly/OCDE_LiteracyLanguage

Carey William Arias

Educational Services
714-966-4445
carias@ocde.us

GENERAL OFFERINGS

2025-2026 Offerings Calendar



2025-26 OCDE Literacy and Language Interactive Calendar

[Custom Contracts and Fee for Service Catalog](#)

General Offerings															
Title Audience	Flyer	Format	Cost	Registration	July/August 2025	September 2025	October 2025	November 2025	December 2025	January 2026	February 2026	March 2026	April 2026	May 2026	
2024-25 Literacy & Language Network <i>Length:</i> Monthly <i>Suggested Audience:</i> Literacy District Leaders, TK-12 Coaches/TOSAs, Coordinators, Curriculum Specialists	Flyer	In person 8:30-11:30	NO COST	Registration		Sept. 9th	Oct. 14th	Nov. 11th	Dec. 9th	Jan. 13th *Virtual	Feb. 10th	March 10th	April 14th *Virtual	May 12th	
Writing Across Disciplines Summit <i>Suggested Audience:</i> TK-12 Teachers, Coaches/TOSAs, Curriculum specialists	Flyer	In Person All Day 8:30-4:30	\$150 \$125 groups 4 or more	Registration			Oct 11								1

All dates, registration links and flyers can be found on our General Offerings Interactive Calendar (linked above). You can also access this information on the OCDE Website- Literacy and Language page.

The Interactive Calendar indicates if an offering is virtual or in-person and the location. There are both no cost and fee-based offerings available.

General Offerings are open to all educators in Orange County and are organized by General, Elementary and Secondary. Our offerings are labeled by the following topics:

Leadership

Reading

Foundational Skills

AI in Literacy

Intervention

Writing

ERWC

Supporting ML Learners



CUSTOM CONTRACTS

INFORMATION

Custom contracts are also available, upon request. If you need a specific training, we are available to collaborate on a custom contract. Custom contracts can be tailored to meet the needs of a district or school. Keep in mind that any of the trainings that we offer in our general offerings can be customized for your district/school!

All customized services require advanced planning, scheduling, staffing, and possibly contractual agreements. To help us better serve you, please submit your customized training requests at least 90 days in advance, whenever possible. This will ensure that the contract process is complete prior to the requested dates of service.

CUSTOM CONTRACTS: GENERAL TOPICS



Well Prepared and Supported Teachers and Leaders

- Textbook Adoption
- New teacher literacy routines bootcamp
- Coaching
- Designing Inclusive Literacy Classrooms
- Professional Learning Communities



Family Engagement and Literacy

- Parent Workshops
- Staff PD – Teachers, Paraeducators, FACE
- Literacy Nights
- PTA, DELAC, ELAC Presentations



Celebration of Diversity and Asset Based Approach

- Project-Based Learning (PBL)
- EL Roadmap Training
- ELA/ELD Framework – iELD/dELD
- Strategies for ML in Phonics Instruction
- Cultural Responsive Pedagogies



Whole Child & Other

- Tiered literacy supports
- Literacy and Executive Functions
- Interdisciplinary literacy
- Text complexity
- Student-centered instructional strategies

CUSTOM CONTRACTS: ELEMENTARY



Foundational Skills & Science of Reading

- Acquisition of the foundational skills of literacy: print concepts, phonological awareness, phonics and word recognition, and fluency
- Reading Intervention
- Early (TK/K) Literacy
- Custom Needs



Reading Difficulty Risk Screener

- Legislative background
- Implementation Planning
- Tiered Intervention and Instructional Response
- Data Analysis
- Coaching and consultation
- Custom Needs



Writing

- Genre writing
- Writing across content areas (science, social studies, ect.)
- The Writing Rope
- Foundational and Emergent Writing
- Custom Needs



Reading Comprehension

- Complex Text
- Integrated ELD
- Language Development
- Custom Needs

CUSTOM CONTRACTS: SECONDARY



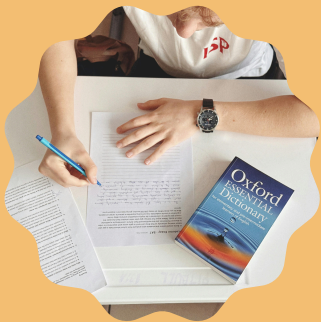
Inclusive Literacy Practices

- Language Equity and Multilingual Learners
- Culturally Responsive Literacy
- Facilitating Complex Conversations
- Custom needs



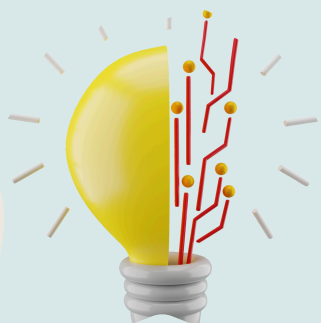
Integrated and Interdisciplinary Approach

- Thematic Units
- Inquiry-based Learning
- Formative and Performance-based Assessments
- Custom needs



Secondary Reading and Writing

- Writing Labs (The Writing Rope)
- Adolescent Reading Acceleration
- Academic Conversations
- Cognitive Strategies
- Custom needs



AI Literacy

- Generative AI 101
- Generative AI tools
- Ethical Considerations in AI and ELA
- Personalized Learning through AI
- Custom needs

FEE STRUCTURE

Customized Professional Learning

- \$1500.00 daily rate for 5 hours or more *(per OCDE staff member)
- \$750.00 half day rate for 3-4 hours *(per OCDE staff member)
- \$250.00 per hour for 1 or 2 hours, *(per OCDE staff member)
 - OCDE staff may also charge for prep time at these same rates and build into the contract
 - OCDE staff may also build in fees for mileage and materials, as needed
 - OCDE staff may also build in charges for refreshments, as needed

**Two OCDE staff are required for trainings of 50 participants or more*

Questions?

If you have any questions about contracts or invoices, please contact:

Carey William Arias
Educational Services
714-966-4445
carias@ocde.us



A circular icon with a light blue background. Inside the circle is a black line drawing of a chalkboard. The letters 'ABC' are written on the board, and a checkmark is drawn to the right of the letters.

RESOURCES



- [OCDE Literacy and Language Website](#)
- [ELA Common Core Standards](#)
- [ELA/ELD Framework](#)
- [MTSS](#)
- [UDL](#)
- [EL Roadmap](#)
- [Literacy Roadmap](#)
- [Textbook Adoption](#)
- [EL Rise](#)

ADDITIONAL CONTACTS:

ERWC:

Denise Harshman, Ed.D.

Advancing Learning, Coordinator

714-966-4446

DHarshman@ocde.us

Multilingual Supports:

Sandra Preciado

Multilingual Academic Services

(MAS), Manager

714-641-5424

spreciado@ocde.us