



WILLIAM M. HABERMEL
County Superintendent of Schools

NARRATIVE DIRECTIONS FOR REACHING THE ORANGE COUNTY DEPARTMENT OF EDUCATION

200 KALMUS DRIVE, COSTA MESA, CALIFORNIA 92626 • PHONE (714) 966-4000

From Riverside toward Newport Beach:

Newport-Costa Mesa Freeway (55) south to Baker offramp. Left on Baker to Red Hill. Right on Red Hill to Kalmus. Right on Kalmus to Department of Education. Turn right into the parking lot.

From Los Angeles toward San Diego:

Santa Ana Freeway (5) south to Newport-Costa Mesa Freeway (55). South on Newport-Costa Mesa Freeway to Baker offramp. Left on Baker to Red Hill. Right on Red Hill to Kalmus. Right on Kalmus to Department of Education. Turn right into the parking lot.

From Long Beach toward San Diego:

San Diego Freeway (405) south to Bristol. Right on Bristol to Baker. Left on Baker to Red Hill. Right on Red Hill to Kalmus. Right on Kalmus to Department of Education. Turn right into the parking lot.

From Corona del Mar toward Newport-Costa Mesa Freeway:

Corona del Mar Freeway (73) north to Newport-Costa Mesa Freeway (55). North on Newport-Costa Mesa Freeway to Baker offramp. Right on Baker to Red Hill. Right on Red Hill to Kalmus. Right on Kalmus to Department of Education. Turn right into the parking lot.

From Corona del Mar – PCH:

Pacific Cost Highway to Jamboree. Right on Jamboree to Bristol. Left on Bristol to Red Hill. Right on Red Hill to Kalmus. Left on Kalmus to Department of Education. Turn right into the parking lot.

From San Diego toward Los Angeles:

San Diego Freeway (405) to Newport-Costa Mesa Freeway (55). South on Newport-Costa Mesa Freeway to Baker offramp. Left on Baker to Red Hill. Right on Red Hill to Kalmus. Right on Kalmus to Department of Education. Turn right into the parking lot.

Building A

- Superintendent
- Deputy Superintendent
- Board Room
- Business Services
- Facilities/Purchasing
- Human Resources & Support Services
- Legal Services

Building C

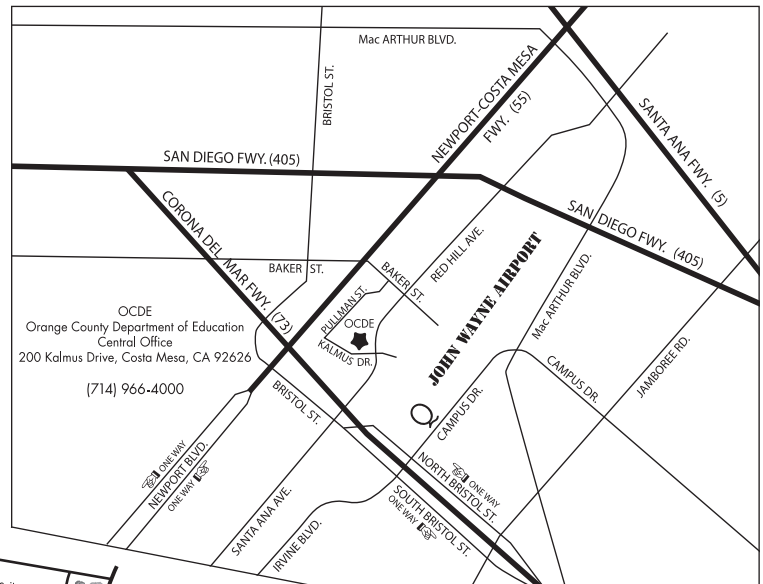
- Informational Services
- Facility Operations
- Media Services
- Special Education Services
- Kalmus Kitchen

Building D

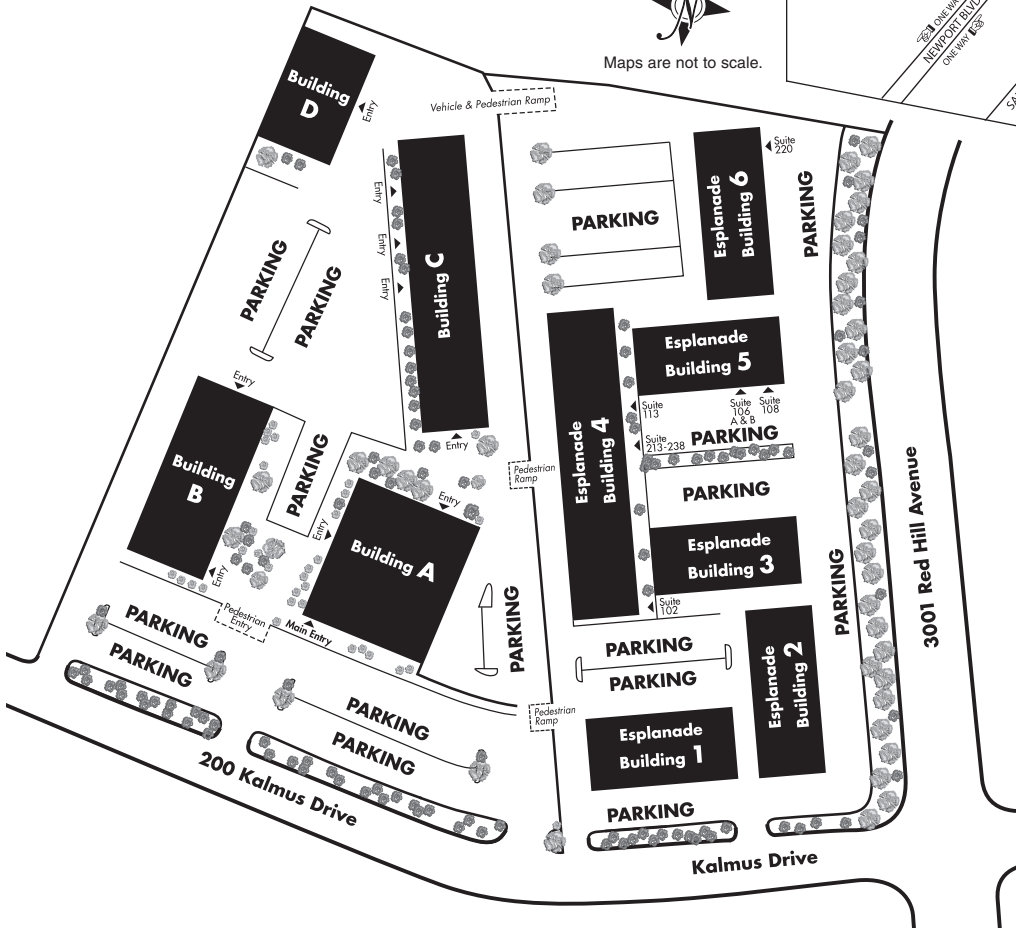
- Conference Center

Building B

- Instructional Services
- Alternative Education Services
- School & Community Services



Maps are not to scale.



Esplanade Building 4

Suites 102, 213-228
Instructional Services
Learning Support

Suite 113

Child Care Services

Esplanade Building 5

Suite 106
Conference Rooms

Suite 108

School & Community Services

Esplanade Building 6

Suite 220

Instructional Services
Learning Support