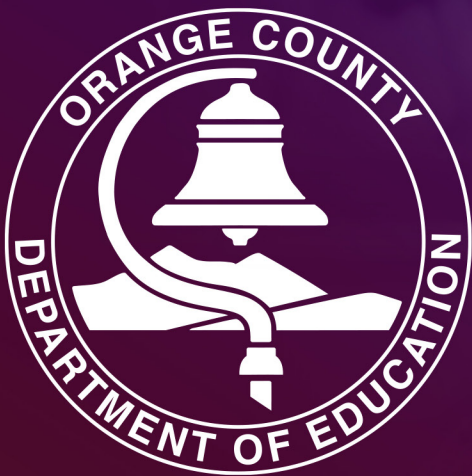


531

Strategic Plan for Educational Success 2024-25



Stefan Bean, Ed.D.
Orange County Superintendent of Schools



Our path forward:

Introducing the 5-3-1 Strategic Plan

In late 2024, the Orange County Department of Education proudly introduced a new roadmap for advancing educational excellence in Orange County, known as the 5-3-1 Strategic Plan. This initiative is designed to guide our work, build upon our foundational strengths and chart a clear path forward with a unified vision.

You might be wondering: What exactly is a 5-3-1 Strategic Plan? The title itself offers a glimpse – five key initiatives, three objectives that support our local districts, and one bold, ambitious goal. Each component reflects the insights we gathered from extensive discussions, survey responses and collaborative meetings with superintendents and community partners across the county.

In the following pages, you'll find a breakdown of our five central initiatives, from enhancing career technical education opportunities for our most vulnerable student populations to fostering emotional intelligence and integrating artificial intelligence. We're also laying out our commitments to supporting the unique needs of our 28 districts, from fiscal and legislative guidance to academic excellence and greater support for local superintendents. And finally, our "one big, audacious goal" serves as a rallying point for transformative progress within our ACCESS schools.

This plan is a reflection of your collective voices and a testament to the dedication of our staff to meeting the evolving needs of our students, families and communities. As we begin this new chapter, I am grateful for your continued partnership and look forward to working together to bring the 5-3-1 Strategic Plan to life, paving the way for meaningful, impactful change for those we serve.

Thank you for your commitment and support.

Stefan Bean, Ed.D.

Orange County Superintendent of Schools



Vision

Orange County students will lead the nation in college and career readiness and success.

Mission

The mission of the Orange County Department of Education (OCDE) is to ensure that all students are equipped with the competencies they need to thrive in the 21st century.

5

KEY INITIATIVES



Enhancing Career Technical Education (CTE) for Vulnerable Students

In Orange County, we are strengthening career and technical education to support students facing barriers to education and career advancement. This initiative seeks to expand CTE and sharpen our focus on inclusivity, ensuring all students have access to hands-on, career-focused learning from elementary through high school. Through real-world experiences like job shadowing, internships and apprenticeships in high-demand industries, and in collaboration with districts and employers, OCDE is building pathways that connect CTE programs with college, credentials, apprenticeships and employment. This integrated approach is designed to empower all learners to achieve educational and career success.

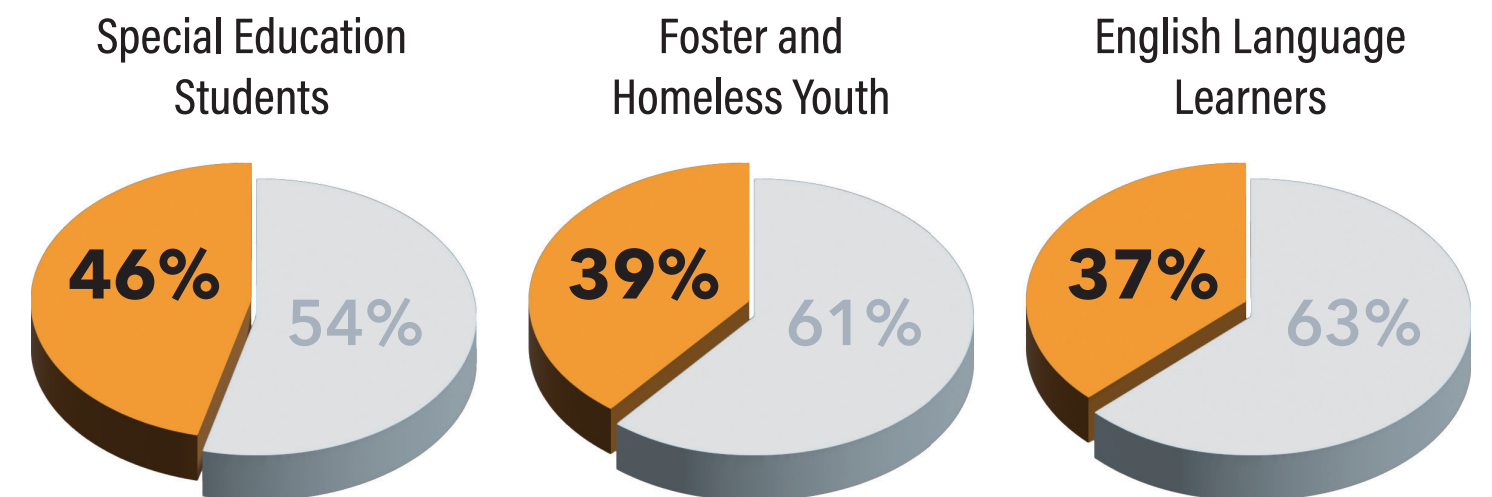
Point Person: Kathy Boyd, Executive Director, Career Education and Postsecondary Advancement

Fostering Emotional Intelligence

OCDE will cultivate emotional intelligence among leaders, teachers and students to foster empathy, effective communication and well-being. Through targeted programs, OCDE aims to help students and educators manage emotions, build better relationships, and create positive learning environments. Some of the main benefits of EI in schools include: improved academic performance, enhanced social skills, better mental health, resilience and adaptability, stronger teacher-student relationships, and positive school culture.

Point Person: Stacy Deeble-Reynolds, Executive Director, Student Initiatives, Partnerships and Events

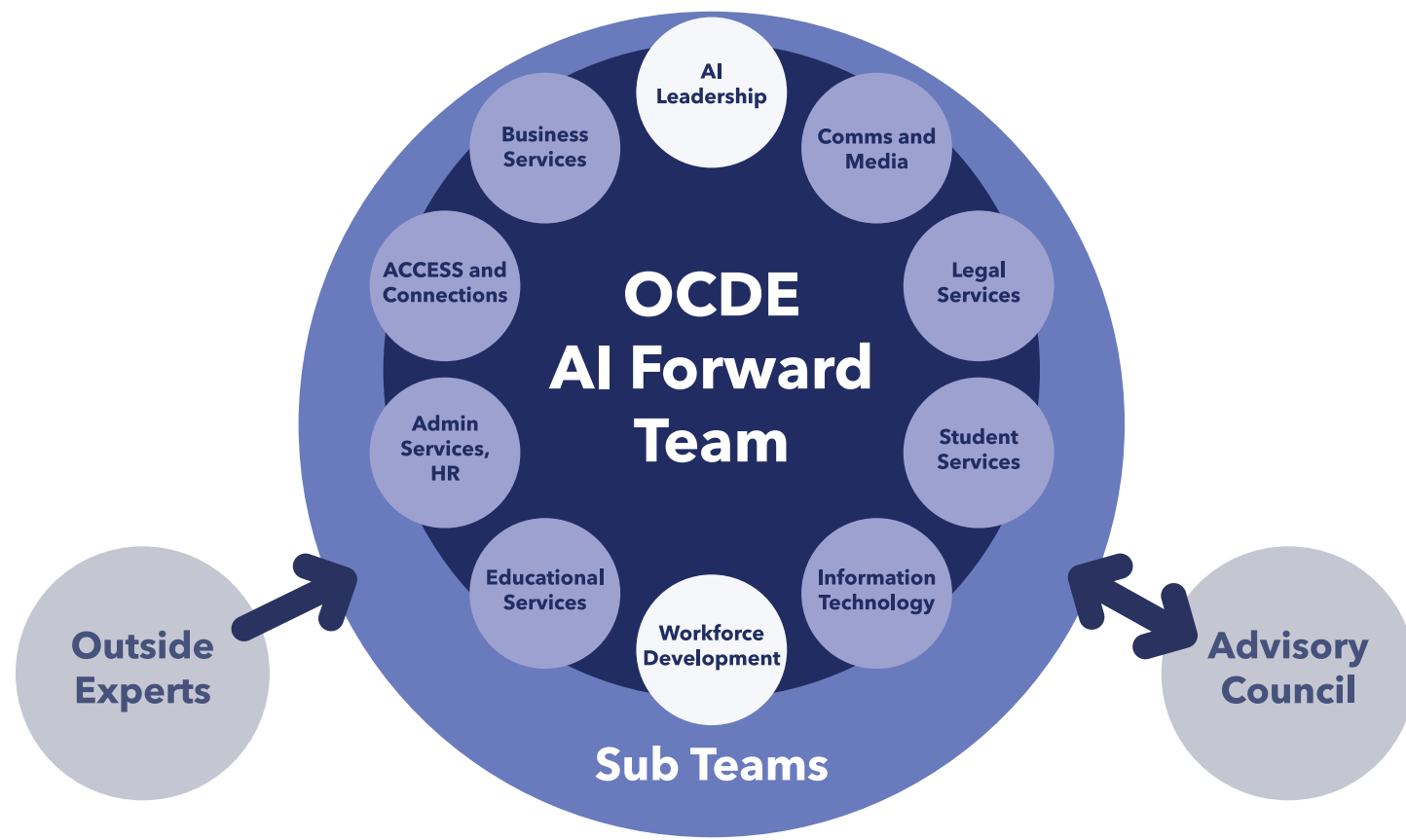
Students in CTE Programs



Integrating Artificial Intelligence (AI)

OCDE envisions AI as a tool to revolutionize education and business. By establishing an "AI Forward Team," OCDE will responsibly integrate AI to enhance learning, inspire innovation, and prepare students for future careers. This initiative includes a structured 100-day rollout plan to build foundational support and promote continuous improvement.

Point Person: Dr. Jonathan Swanson, Executive Director, Curriculum, Instruction and Academic Enrichment



Ensuring School Safety

OCDE is committed to enhancing school safety by working closely with local law enforcement and school districts across the county to address key safety needs. This collaborative effort aims to integrate comprehensive protocols on essential topics such as emergency response, bullying prevention, mental health support and crisis intervention, tailored to the unique needs of each school community. The initiative emphasizes preparedness through regular drills, secure access to critical information, and thorough training on threat assessment, conflict resolution and safe evacuation procedures. By prioritizing these elements, OCDE helps ensure a safe, supportive and resilient learning environment for all students and staff.

Point Person: Dennis Cole, OCDE Chief of Staff



Funding Innovations

OCDE will inspire and support transformative innovation across districts through a dynamic funding model. This initiative will empower schools and districts with the resources needed to develop and expand innovative practices that elevate student engagement and achievement and build a collaborative network of visionary educators dedicated to shaping a forward-thinking future in education.

Point Person: Dr. Diane Ehrle, Director, Continuous Improvement Team

3 SUPPORT OBJECTIVES



District and Charter School Support

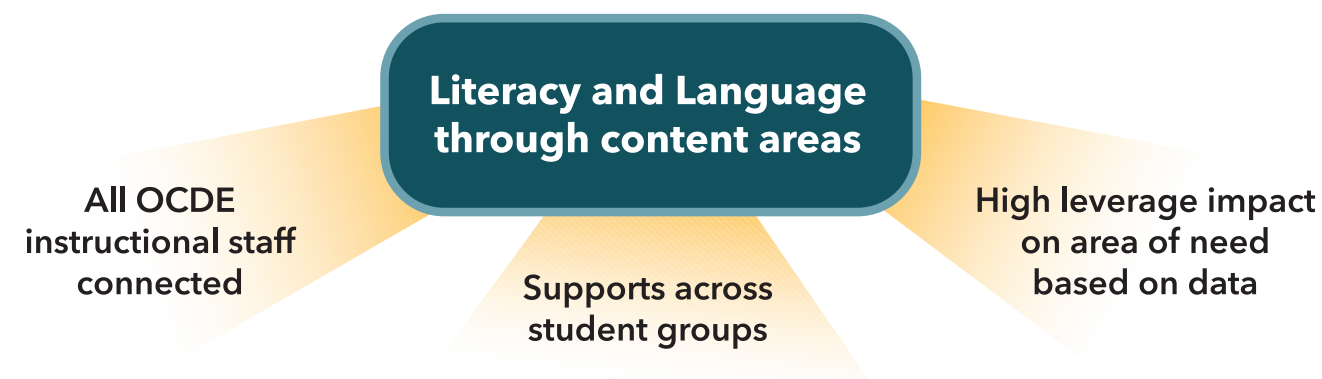
OCDE will create customized supports to address the unique challenges faced by our 28 districts and their superintendents, along with leaders of our county's charter schools. We offer expert guidance, resources and professional development tailored to address each district's specific needs. By building strong partnerships and fostering a collaborative approach, OCDE helps ensure that all districts have the support they need to deliver high-quality education to every student.

Point Person: Dr. Stefan Bean, Orange County Superintendent of Schools

Academic Support with Rigor

Language is central to educational success in all content areas, as well as human connection, forming the foundation of all learning. Literacy practices not only build essential communication skills but also provide access to complex subjects like mathematics and science, bridging gaps in understanding. By addressing all literacy domains – reading, writing, speaking and listening – educators can support both new and long-term English learners in achieving language fluency. This holistic approach empowers students to fully engage with academic content and thrive in diverse learning environments.

Point Persons: Dr. Jonathan Swanson, Executive Director, Curriculum, Instruction and Academic Enrichment; Jami Parsons, Director, Systemic Leadership and Continuous Improvement



Legal, Legislative and Fiscal Support

OCDE will provide mobile training units and resources to navigate complex educational policies and fiscal management. These on-demand services will enable our districts to make sound educational decisions, implement fiscally responsible educational plans, and meet the requirements of legislative policies at local, state and federal levels.

Point Persons: Dean West, Associate Superintendent, Business Services; Greg Rolen, General Counsel, Legal Services

1

BIG AUDACIOUS GOAL



ACCESS 2030 Vision

OCDE will strategically position school sites to ensure that quality education is accessible across all 28 districts, optimizing for demographic and community needs.

Point Persons: Dr. Stefan Bean, Orange County Superintendent of Schools; Analee Kredel, Associate Superintendent, ACCESS and Connections

Continuous Improvement: Chronic Absenteeism

OCDE will play a pivotal role in reducing chronic absenteeism by providing schools with targeted resources, data analysis and strategic support for early identification of students who are at risk. Through collaboration with district leaders, community organizations and families, the department can foster engagement initiatives and implement evidence-based practices to ensure students remain consistently connected to their educational journeys.

Point Persons: Dr. Sonia Llamas, Associate Superintendent, Student Services; Dr. Daniel Ochoa, Director, Integrated Student Supports; Ryan Cummins, Director, Student Services

ACCESS (Alternative Education) Schools

Vision Development

Crafting a comprehensive vision for ACCESS to guide future initiatives

Ethnic Studies Curriculum

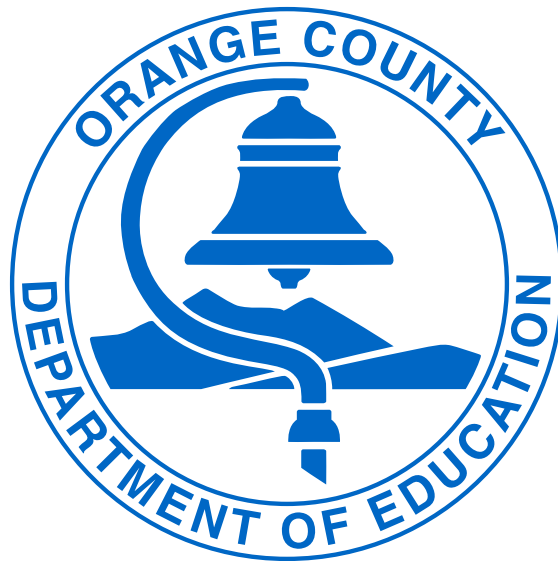
Creating an inclusive ethnic studies program to enhance cultural understanding

Seeking Input

Actively soliciting superintendent feedback to improve ACCESS programs and services

Continuous Improvement and Chronic Absenteeism

Creating an inclusive ethnic studies program to enhance cultural understanding



Orange County Department of Education
(714) 966-4000
communications@ocde.us

200 Kalmus Drive
Costa Mesa, CA 92626-5922

P.O. Box 9050
Costa Mesa, CA 92628-9050