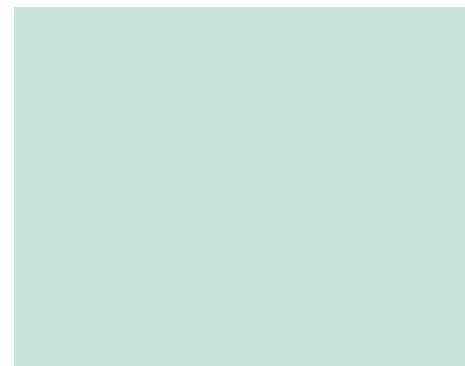


# SARC

2017-18 School Accountability  
Report Card  
Published in 2018-19



## ACCESS Juvenile Hall

Grades K-12  
CDS Code 30-10306-3030426

Kirk Anderson  
Program Administrator  
kanderson3@ocde.us

331 City Drive South  
Orange, CA 92705  
(714) 935-7651

[www.ocde.us/ACCESS/Pages/  
Correctional-Education.aspx](http://www.ocde.us/ACCESS/Pages/Correctional-Education.aspx)

Para español, visita  
[www.ocde.us](http://www.ocde.us)



# Orange County Department of Education

200 Kalmus Drive Costa Mesa, CA 92626 ▪ [www.ocde.us](http://www.ocde.us)  
Al Mijares, Ph.D., Superintendent ▪ [amijares@ocde.us](mailto:amijares@ocde.us) ▪ (714) 966-4000

## Program Administrator's Message

The ACCESS (Alternative, Community, and Correctional Education Schools and Services) programs provide year-round educational options. Curriculum offerings are aligned with local districts and with the California Standards and Frameworks. Through a variety of powerful learning strategies (e.g., directed study, differentiated instruction and mastery learning), students are prepared to achieve proficiency-level literacy. Teachers are encouraged to bring critical-thinking, problem-solving and decision-making skills into the classroom, working with students individually or through group participation.

The key to success is the personalized learning plan and student interaction with staff members who focus on each individual with care, concern and guidance. This relationship provides the student with positive school experiences. Students are encouraged to demonstrate respect for self and others, good work habits, and a sense of personal and community responsibility in a positive learning environment.

We provide support services to enable students to learn appropriate behavior and pro-social skills.

We assist students in transferring newly acquired skills to situations and behaviors they encounter outside the school environment. The multicultural demographics in Orange County assist teachers and students in learning respect for the diversity of many cultures.

Juvenile Hall and the other institutional schools received a six-year accreditation from the Western Association of Schools and Colleges in the spring of 2016.

All ACCESS programs come under one of five categories: county community schools, juvenile court schools, the Orange County Community School (OCCS), correctional education and the Adult Correctional Education Program (ACEP). Programs are supported by student support services such as special education, categorical support (in the form of Title I and other grant programs) to serve institutions, group homes and community schools.

Correctional Education (students whose delinquent behavior has led to restrictions imposed by the judicial system [incarceration and/or probation]), Federal and Student Support Services (ACCESS programs are supported by a variety of specialized support personnel including counselors, psychologists, special education, and Title I staff, including group home tutors and transition specialists), and Adult Correctional Education Program ACEP (educational programs for adults ages 18 and older, residing in correctional institutions).

## School Mission Statement

The ACCESS mission is to provide a continuum of services for agency partners and school districts that prepare all students to be college and career ready.

## School Vision Statement

ACCESS students will be college and career ready by acquiring 21st century skills to become contributing members of their community.

## Parental Involvement

Research tells us that family involvement in schools makes a big difference. When schools, families and communities work together, student achievement increases. ACCESS Youth Correctional Education Program (YCEP) welcomes and encourages family participation in a variety of ways.

Parent engagement activities are coordinated with probation, the Orange County Health Care Agency and other collaborative partners.

A Bilingual Family Community Liaison is available to assist parents during enrollment, parent-teacher conferences, meetings and family events at school sites.

We offer parenting classes to families through the Orange County Health Care Agency and community partners. We have also partnered with Padres Unidos to provide parenting classes.

Parents, school personnel, and probation staff may be elected to serve on the School Site Council and English Learner Advisory Committee.

Parents participate in the Parent Teacher Student Association (PTSA) unit located at Rio Contiguo High School.

Parental involvement opportunities are coordinated by the family engagement program manager, Wendy Rogan. Please contact her at (714) 836-1563 if you would like additional information.

## School Safety

The ACCESS Safe School Plan is updated biannually; the last review date was February 2019. The ACCESS Safe School Advisory Committee is responsible for approving the ACCESS Safe School Plan and making future recommendations. Members include teachers, administrators, safe school coordinators, students, parents and law-enforcement representatives. Contents of the Safe School Plan include, but are not limited to, board policies, safe school strategies and programs, crisis-response procedures, and threat-assessment protocol. In addition, individual school sites develop safe school plans customized to address their specific needs. Site-specific safe school plans are kept at the sites and the administrative offices.



## School Accountability Report Card

In accordance with state and federal requirements, the School Accountability Report Card (SARC) is put forth annually by all public schools as a tool for parents and interested parties to stay informed of the school's progress, test scores and achievements.

## Mission Statement

The mission of the Orange County Department of Education is to ensure that all students are equipped with the competencies they need to thrive in the 21st century.

## Vision Statement

Orange County will lead the nation in college and career readiness and success.



## Orange County Board of Education

Rebecca Gomez, 1st District

Mari Barke, 2nd District

Dr. Ken L. Williams, 3rd District

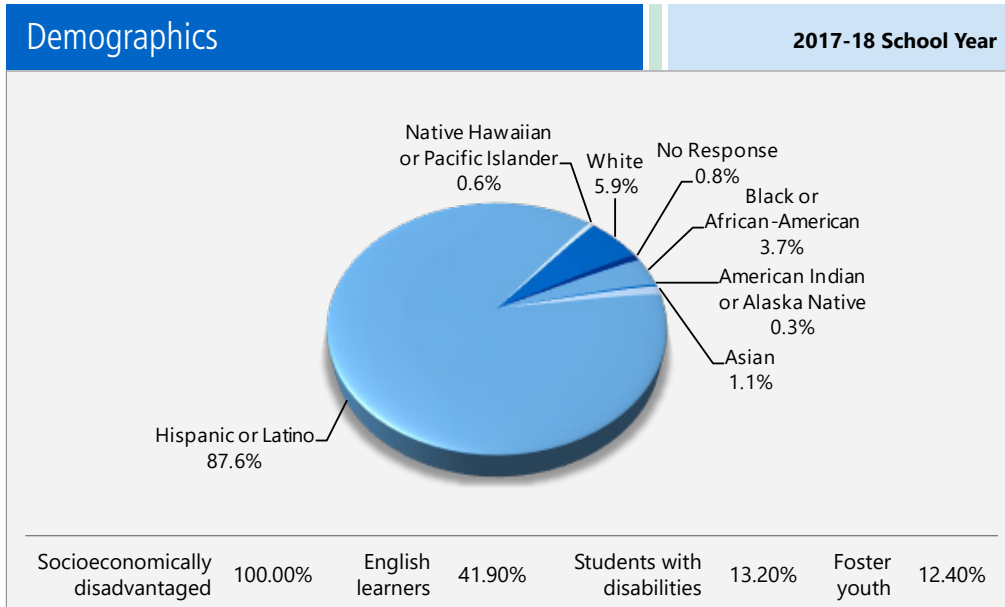
John W. Bedell, Ph.D., 4th District

Lisa Sparks, Ph.D., 5th District



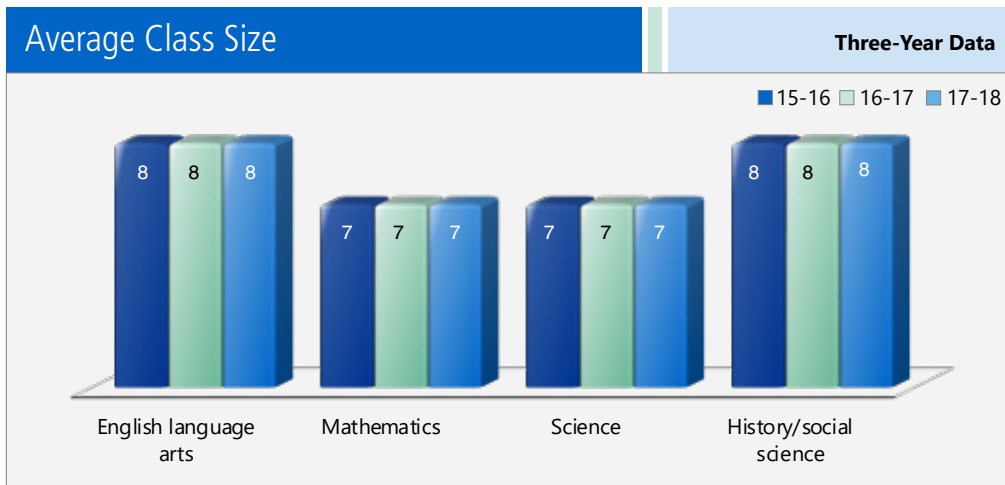
### Enrollment by Student Group

The total enrollment at the school was 356 students for the 2017-18 school year. The pie chart displays the percentage of students enrolled in each group.



### Class Size Distribution

The bar graph displays the three-year data for average class size, and the table displays the three-year data for the number of classrooms by size. The number of classes indicates how many classrooms fall into each size category (a range of total students per classroom). At the secondary school level, this information is reported by subject area rather than grade level.

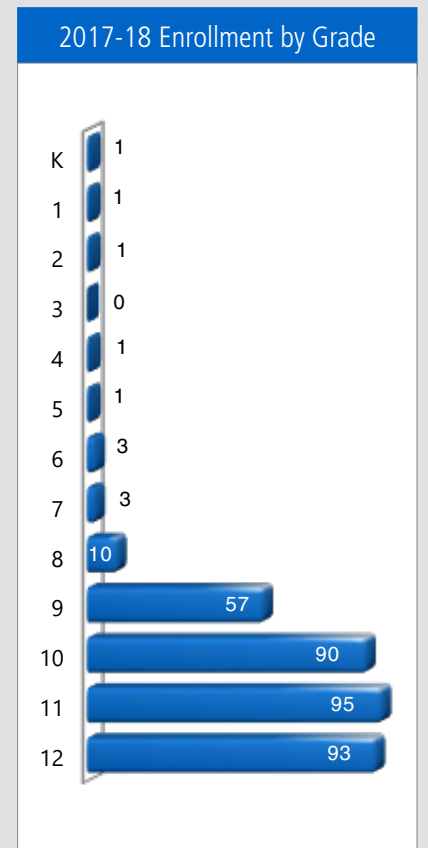


**Number of Classrooms by Size** Three-Year Data

Subject	2015-16			2016-17			2017-18		
	Number of Students								
	1-22	23-32	33+	1-22	23-32	33+	1-22	21-32	33+
English language arts	31			32			28		
Mathematics	30			30			27		
Science	31			29			27		
History/social science	28			34			27		

### Enrollment by Grade

The bar graph displays the total number of students enrolled in each grade for the 2017-18 school year.



*"Teachers are encouraged to bring critical-thinking, problem-solving and decision-making skills into the classroom, working with students individually or through group participation."*



## CAASPP Test Results for All Students: Science (grades 5, 8 and 10)

The 2016–17 and 2017–18 data are not available. The California Department of Education is developing a new science assessment based on the Next Generation Science Standards for California Public Schools (CA NGSS). The California Science Test (CAST) was pilot-tested in spring 2017 and field-tested in spring 2018. The CAST will be administered operationally during the 2018–19 school year. The CAA for Science was pilot-tested for two years (i.e., 2016–17 and 2017–18) and the CAA for Science will be field-tested in 2018–19.

Percentage of Students Scoring at Proficient or Advanced					Two-Year Data	
	ACCESS Juvenile Hall		Orange CDE		California	
Subject	16-17	17-18	16-17	17-18	16-17	17-18
Science	◇	◇	◇	◇	◇	◇

## CAASPP Test Results for All Students: English Language Arts/Literacy and Mathematics (grades 3-8 and 11)

The table below shows the percentage of students meeting or exceeding the state standards in English language arts (ELA)/literacy and mathematics.

Percentage of Students Meeting or Exceeding State Standards					Two-Year Data	
	ACCESS Juvenile Hall		Orange CDE		California	
Subject	16-17	17-18	16-17	17-18	16-17	17-18
English language arts/literacy	9%	2%	35%	40%	48%	50%
Mathematics	2%	0%	24%	30%	37%	38%

## California Physical Fitness Test

Each spring, all students in grades 5, 7 and 9 are required to participate in the California Physical Fitness Test (PFT). The Fitnessgram is the designated PFT for students in California public schools put forth by the State Board of Education. The PFT measures six key fitness areas:

1. Aerobic Capacity
2. Body Composition
3. Flexibility
4. Abdominal Strength and Endurance
5. Upper Body Strength and Endurance
6. Trunk Extensor Strength and Flexibility

Encouraging and assisting students in establishing lifelong habits of regular physical activity is the primary goal of the Fitnessgram. The table shows the percentage of students meeting the fitness standards of being in the "healthy fitness zone" for the most recent testing period. For more detailed information on the California PFT, please visit [www.cde.ca.gov/ta/tg/pf](http://www.cde.ca.gov/ta/tg/pf).

California Physical Fitness Test		2017-18 School Year		
Percentage of Students Meeting Fitness Standards	ACCESS Juvenile Hall			
	Grade 5	Grade 7	Grade 9	
Four of six standards	◇	◇	50.0%	
Five of six standards	◇	◇	14.3%	
Six of six standards	◇	◇	7.1%	

◇ Not applicable.

◇ Scores are not shown when the number of students tested is 10 or fewer, either because the number of students tested in this category is too small for statistical accuracy or to protect student privacy.

## California Assessment of Student Performance and Progress (CAASPP)

For the 2017-18 school year, the CAASPP consists of several key components, including:

**California Alternate Assessments (CAA)** test includes both ELA/literacy and mathematics in grades 3-8 and 11. The CAA is given to those students with the most significant cognitive disabilities whose current individualized education program (IEP) designates an alternate assessment.

**Smarter Balanced Assessments** include ELA/literacy and mathematics in grades 3-8 and 11. Smarter Balanced Assessments are designed to measure student progress toward college and career readiness.

The assessments under CAASPP show how well students are doing in relation to the state-adopted content standards. On each of these assessments, student aggregate scores are reported as achievement standards. For more information on the CAASPP assessments, please visit [www.cde.ca.gov/ta/tg/ca](http://www.cde.ca.gov/ta/tg/ca).



## CAASPP by Student Group: English Language Arts/Literacy and Mathematics

The table on the following page displays the percentage of students that met or exceeded state standards in English language arts/literacy and mathematics for the school by student groups for grades 3-8 and 11.

The "percentage met or exceeded" is calculated by taking the total number of students who met or exceeded the standard on the Smarter Balanced Summative Assessment plus the total number of students who met the standard on the CAA divided by the total number of students who participated in both assessments.

Note: The number of students tested includes all students who participated in the test whether they received a score or not. However, the number of students tested is not the number that was used to calculate the achievement level percentages. The achievement level percentages are calculated using only students who received scores.

## CAASPP Results by Student Group: English Language Arts and Mathematics (grades 3-8 and 11)

Percentage of Students Meeting or Exceeding State Standards				2017-18 School Year
<b>English Language Arts</b>				
Group	Total Enrollment	Number Tested	Percentage Tested	Percentage Met or Exceeded
All students	175	143	81.71%	2.13%
Male	136	111	81.62%	2.73%
Female	39	32	82.05%	0.00%
Black or African-American	❖	❖	❖	❖
American Indian or Alaska Native	❖	❖	❖	❖
Asian	❖	❖	❖	❖
Filipino	❖	❖	❖	❖
Hispanic or Latino	149	124	83.22%	2.44%
Native Hawaiian or Pacific Islander	❖	❖	❖	❖
White	13	11	84.62%	0.00%
Two or more races	❖	❖	❖	❖
Socioeconomically disadvantaged	175	143	81.71%	2.13%
English learners	73	61	83.56%	3.28%
Students with disabilities	48	41	85.42%	2.44%
Students receiving Migrant Education services	❖	❖	❖	❖
Foster youth	44	32	72.73%	3.23%
<b>Mathematics</b>				
Group	Total Enrollment	Number Tested	Percentage Tested	Percentage Met or Exceeded
All students	176	144	81.82%	0.00%
Male	138	113	81.88%	0.00%
Female	38	31	81.58%	0.00%
Black or African-American	❖	❖	❖	❖
American Indian or Alaska Native	❖	❖	❖	❖
Asian	❖	❖	❖	❖
Filipino	❖	❖	❖	❖
Hispanic or Latino	150	125	83.33%	0.00%
Native Hawaiian or Pacific Islander	❖	❖	❖	❖
White	13	11	84.62%	0.00%
Two or more races	❖	❖	❖	❖
Socioeconomically disadvantaged	176	144	81.82%	0.00%
English learners	75	61	81.33%	0.00%
Students with disabilities	51	43	84.31%	0.00%
Students receiving Migrant Education services	❖	❖	❖	❖
Foster youth	42	31	73.81%	0.00%

❖ Scores are not shown when the number of students tested is 10 or fewer, either because the number of students tested in this category is too small for statistical accuracy or to protect student privacy.

## Admission Requirements for California's Public Universities

University of California: Admission requirements for the University of California (UC) follow guidelines set forth in the Master Plan, which requires that the top one-eighth of the state's high school graduates, as well as those transfer students who have successfully completed specified college course work, be eligible for admission to the UC. These requirements are designed to ensure that all eligible students are adequately prepared for university-level work. For general admissions requirements, please visit the UC Admissions Information web page at <http://admission.universityofcalifornia.edu>.

California State University: Eligibility for admission to California State University (CSU) is determined by three factors: 1. specific high school courses, 2. grades in specified courses and test scores, and 3. graduation from high school. Some campuses have higher standards for particular majors or students who live outside the local campus area. Because of the number of students who apply, a few campuses have higher standards (supplementary admission criteria) for all applicants. Most CSU campuses have local admission-guarantee policies for students who graduate or transfer from high schools and colleges that are historically served by a CSU campus in that region. For admission, application and fee information, see the CSU web page at [www.calstate.edu/admission/admission.shtml](http://www.calstate.edu/admission/admission.shtml).

## Course Enrollment for UC/CSU Admission

The table displays two measures related to the school's courses that are required for University of California and California State University admission for the most recent year for which data is available. For more detailed information, visit <http://dq.cde.ca.gov/dataquest>.

UC/CSU Admission	2016-17 and 2017-18 School Years
	ACCESS Juvenile Hall
Percentage of students enrolled in courses required for UC/CSU admission in 2017-18	0.00%
Percentage of graduates who completed all courses required for UC/CSU admission in 2016-17	0.00%

## Career Technical Education Programs

A number of programs emphasizing successful transition skills are available. These programs foster the acquisition and growth of work-readiness skills. These include Regional Occupational Programs, career assessments, life-skills classes, vocational exploration, and partnerships with local community colleges and technical programs. We want our students to acquire an understanding of skills for success in the workplace.

ACCESS Juvenile Hall does not offer a formal career technical education program or classes.

## Career Technical Education Participation

This table displays information about participation in the school's Career Technical Education (CTE) programs.

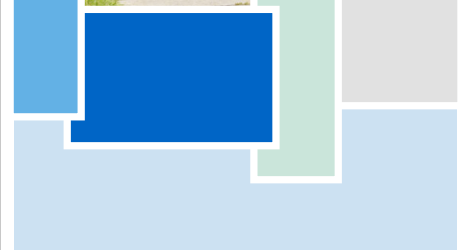
Career Technical Education Data	2017-18 Participation
	ACCESS Juvenile Hall
Number of pupils participating in CTE	0
Percentage of pupils who completed a CTE program and earned a high school diploma	0%
Percentage of CTE courses that are sequenced or articulated between a school and institutions of postsecondary education	0%

## Suspensions and Expulsions

This table shows the school, district, and state suspension and expulsion rates for the most recent three-year period. Note: Students are only counted one time, regardless of the number of suspensions.

### Suspension and Expulsion Rates

ACCESS Juvenile Hall			
	15-16	16-17	17-18
Suspension rates	0.0%	0.0%	0.2%
Expulsion rates	0.0%	0.0%	0.0%
Orange CDE			
	15-16	16-17	17-18
Suspension rates	4.1%	3.7%	2.6%
Expulsion rates	0.0%	0.0%	0.0%
California			
	15-16	16-17	17-18
Suspension rates	3.7%	3.6%	3.5%
Expulsion rates	0.1%	0.1%	0.1%



## Completion of High School Graduation Requirements

This table displays school, district and California data for the percentages of students in the most recent graduating class who met all state and local graduation requirements for grade 12 completion. The formula for the completion of graduation requirements is the number of grade 12 students who met all graduation requirements divided by the number of students enrolled in grade 12 at the time of the Fall Census Day. For more information, please visit [www.cde.ca.gov/ci/gi/gi/hs/hsgrmin.asp](http://www.cde.ca.gov/ci/gi/gi/hs/hsgrmin.asp) or [www.cde.ca.gov/ci/gi/gi/hs/cefhsgadreq.asp](http://www.cde.ca.gov/ci/gi/gi/hs/cefhsgadreq.asp).

Completion of High School Graduation Requirements		Graduating Class of 2017	
Group	ACCESS Juvenile Hall	Orange CDE	California
All students	89.47%	99.52%	88.72%
Black or African-American	66.67%	100.00%	82.15%
American Indian or Alaska Native	❖	100.00%	82.81%
Asian	33.33%	100.00%	94.93%
Filipino	❖	80.00%	93.45%
Hispanic or Latino	89.19%	92.10%	86.54%
Native Hawaiian or Pacific Islander	100.00%	100.00%	88.56%
White	75.00%	100.00%	92.12%
Two or more races	❖	100.00%	91.15%
Socioeconomically disadvantaged	50.53%	92.21%	88.64%
English learners	74.42%	77.70%	56.74%
Students with disabilities	100.00%	92.38%	67.12%
Foster youth	85.71%	78.26%	74.08%

## Graduation and Dropout Rates

This table displays the graduation and dropout rates for the most recent three-year period for which data is available. The four-year adjusted cohort graduation rate is the number of students who graduate in four years with a regular high school diploma divided by the number of students who form the adjusted cohort for the graduating class. From the beginning of grade 9 (or the earliest high school grade), students who are entering that grade for the first time form a cohort that is "adjusted" by adding any students who subsequently transfer into the cohort and subtracting any students who subsequently transfer out. For more information, please visit <http://dq.cde.ca.gov/dataquest>.

Graduation and Dropout Rates	Three-Year Data					
	Graduation Rate			Dropout Rate		
	14-15	15-16	16-17	14-15	15-16	16-17
ACCESS Juvenile Hall	**	**	**	**	**	**
Orange CDE	89.96%	91.00%	87.15%	6.70%	5.20%	6.52%
California	82.30%	83.80%	82.70%	10.70%	9.70%	9.10%

❖ Scores are not shown when the number of students tested is 10 or fewer, either because the number of students tested in this category is too small for statistical accuracy or to protect student privacy.

\* County Office of Education administered schools receive the countywide rate.



## Advanced Placement Courses

At this time no Advanced Placement (AP) courses are offered by ACCESS Juvenile Hall.



*"We assist students in transferring newly acquired skills to situations and behaviors they encounter outside the school environment."*



## Textbooks and Instructional Materials

The Orange County Board of Education has certified that all students have access to standards-based instructional materials in the academic core.

The textbooks are consistent with the content and cycles of the curriculum frameworks adopted by the State Board of Education.

The Orange County Department of Education has affirmed that each pupil, including English Learners, has their own textbook to use in class and to take home. This public hearing occurred on August 7, 2018.

Textbooks and Instructional Materials List		2018-19 School Year
Subject	Textbook	Adopted
Reading/language arts	⌘	⌘
Mathematics	⌘	⌘
Science	⌘	⌘
History/social science	⌘	⌘

⌘ Due to Specialized Instruction, we do not provide a list of textbook titles and publishers. However, a list is available at the Orange County Department of Education.

## Availability of Textbooks and Instructional Materials

The following lists the percentage of pupils who lack their own assigned textbooks and instructional materials.

Percentage of Students Lacking Materials by Subject		2018-19 School Year
ACCESS Juvenile Hall	Percentage Lacking	
Reading/language arts	0%	
Mathematics	0%	
Science	0%	
History/social science	0%	
Visual and performing arts	0%	
Foreign language	0%	
Health	0%	
Science laboratory equipment	0%	

## Public Internet Access

Internet access is available at public libraries and other locations that are publicly accessible (e.g., the California State Library). Access to the internet at libraries and public locations is generally provided on first-come, first-served basis. Other use restrictions include the hours of operation, the length of time that a workstation may be used (depending on availability), the types of software programs available at a workstation, and the ability to print documents.

## Quality of Textbooks

The following table outlines the criteria required for choosing textbooks and instructional materials.

Quality of Textbooks	
2018-19 School Year	
Criteria	Yes/No
Are the textbooks adopted from the most recent state-approved or local governing-board-approved list?	Yes
Are the textbooks consistent with the content and cycles of the curriculum frameworks adopted by the State Board of Education?	Yes
Do all students, including English learners, have access to their own textbooks and instructional materials to use in class and to take home?	Yes

## Currency of Textbooks

This table displays the date when the most recent hearing was held to adopt a resolution on the sufficiency of instructional materials.

Currency of Textbooks	
2018-19 School Year	
Data collection date	8/7/2018





## School Facility Good Repair Status

The table shows the results of the school's most recent inspection using the Facility Inspection Tool (FIT) or equivalent school form. This inspection determines the school facility's good repair status using ratings of good condition, fair condition or poor condition. The overall summary of facility conditions uses ratings of exemplary, good, fair or poor.

School Facility Good Repair Status		2018-19 School Year
Items Inspected	Repair Status	
<b>Systems:</b> Gas leaks, sewer, mechanical systems (heating, ventilation and HVAC)	★	
<b>Interior:</b> Interior surfaces (floors, ceilings, walls and window casings)	★	
<b>Cleanliness:</b> Pest/vermin control, overall cleanliness	★	
<b>Electrical:</b> Electrical systems	★	
<b>Restrooms/fountains:</b> Restrooms, sinks and drinking fountains	★	
<b>Safety:</b> Fire safety, emergency systems, hazardous materials	★	
<b>Structural:</b> Structural condition, roofs	★	
<b>External:</b> Windows/doors/gates/fences, playgrounds/school grounds	★	
<b>Overall summary of facility conditions</b>	★	
<b>Date of the most recent school site inspection</b>	★	
<b>Date of the most recent completion of the inspection form</b>	★	
★ The school does not conduct the inspection. ACCESS Juvenile Hall is inspected and maintained by the Probation Department.		

## School Facilities

Alternative Education/ACCESS school sites are mostly located on leased properties throughout Orange County. The ACCESS program is mostly responsible for the general and routine maintenance of these facilities. The school sites are well maintained by coordinating the ACCESS facilities maintenance procedures and a work-order system in conjunction with contracted services to ensure facilities are in good condition.

Annual Facility Inspection Tool (FIT) reports and facility visits are also part of the maintenance procedures that help to manage and retain the aesthetics and appearance of facilities. The cleanliness of the sites remains a central concern of good condition by having carpets cleaned biannually, window cleaning quarterly and deep cleaning annually.

Juvenile Hall education facilities consist of a library, athletic fields, basketball courts, handball courts, 19 classrooms and six classrooms inside the juvenile hall residential units. There are no portables. The facilities are more than sufficient to meet the needs of the educational program. All of these facilities and areas are maintained by the Probation Department. Administrators for the school complete work orders for any school repairs and submit to the Probation Department staff on-site.

We take the following maintenance procedures to ensure that our facilities are in good and safe condition: Routine maintenance, repairs and safety issues are reported through the ACCESS work-order system managed by the ACCESS Facilities and Operations office.

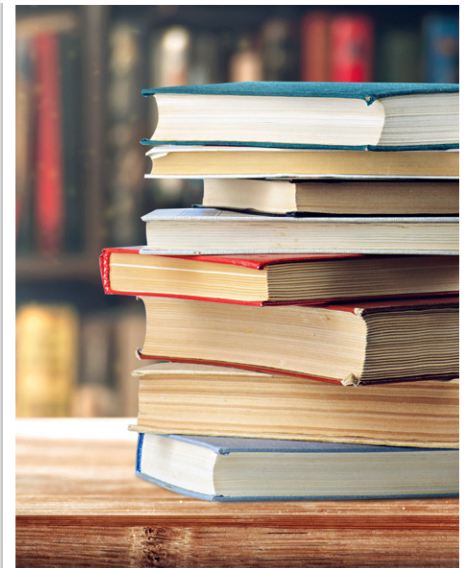
Work orders are prioritized daily by emergency status, health and safety issues. They are assigned daily to the maintenance crew by the lead facilities maintenance technician (FMT).

In addition, the ACCESS Facilities and Operations manager meets daily with the lead FMT to review work orders for determining, identifying, or planning any issues requiring specialized maintenance or repair.

Any maintenance or repair services that are outside of the general maintenance procedures are contracted to the specific field of the repair or maintenance.

Monthly facilities inspections are performed by on-site staff to ensure that no unsafe condition that may cause an accident or bodily harm to anyone at the school site or grounds exist. These inspections and findings are reported on the monthly Safety Report and are turned in to the ACCESS Facilities and Operations office for review. Any unsafe conditions reported are followed-up with the manager and maintenance staff. They are then sent to Risk Management to document the findings.

*Continued on sidebar*



## School Facilities

*Continued from left*

Any exterior maintenance and repairs such as plumbing or electrical, roof replacement, driveway, parking lots, sidewalks, mechanical, major utility systems, and HVAC systems are the responsibility of the Probation Department.



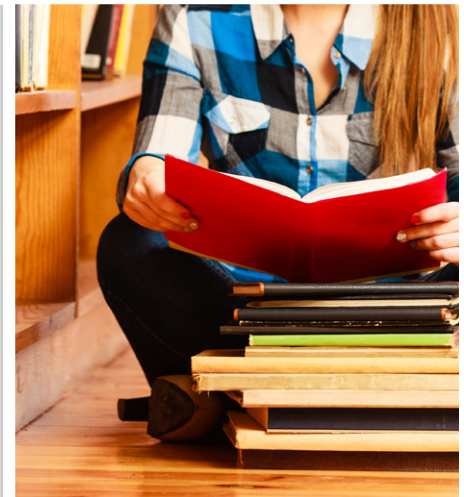
## Types of Services Funded

Categorical funding provides paraprofessionals in almost every classroom as well as professional development, after-school tutoring and supplemental instructional materials.

## Teacher Qualifications

This table shows information about teacher credentials and teacher qualifications. Teachers without a full credential include teachers with district and university internships, pre-internships, emergency or other permits, and waivers. For more information on teacher credentials, visit [www.ctc.ca.gov](http://www.ctc.ca.gov).

Teacher Credential Information	Three-Year Data			
	Orange CDE	ACCESS Juvenile Hall		
Teachers	18-19	16-17	17-18	18-19
<b>With a full credential</b>	202	51	55	38
<b>Without a full credential</b>	6	0	0	0
<b>Teaching outside subject area of competence (with full credential)</b>	0	0	0	0



## Teacher Misassignments and Vacant Teacher Positions

This table displays the number of teacher misassignments (positions filled by teachers who lack legal authorization to teach that grade level, subject area, student group, etc.) and the number of vacant teacher positions (not filled by a single designated teacher assigned to teach the entire course at the beginning of the school year or semester). Please note that total teacher misassignments includes the number of teacher misassignments of English learners.

Teacher Misassignments and Vacant Teacher Positions	Three-Year Data		
	ACCESS Juvenile Hall		
Teachers	16-17	17-18	18-19
<b>Teacher misassignments of English learners</b>	0	0	0
<b>Total teacher misassignments</b>	0	0	0
<b>Vacant teacher positions</b>	0	0	0

## Professional Development

The schools operated in ACCESS offer a variety of instructional strategies and programs to meet student needs. Those students struggling with basic skills are given direct support through specialized programs such as Max Scholar, iReady, Lexia Reading Core5 and Accelerated Reader. High-quality professional development activities designed by school personnel support instructional practices leading to improved student achievement. Teachers and administrators participated in a variety of visitations, conferences, workshops, and in-services on topics such as writing strategies, literacy, instructional strategies, and personal and social development.

Three full staff-development days are held during the school year, and five two-hour staff-development meetings are scheduled to provide opportunities for teacher collaboration and professional growth. Topics have included mathematics, Alternative Teaching Strategies and curriculum training on the adopted ELA curriculum, Collections. Teachers were supported by instructional coaches and administrative staff in the areas of classroom management, individualized instruction, alternative teaching strategies and teaching resources for the at-risk student.

Professional Development Days	Three-Year Data		
	2016-17	2017-18	2018-19
<b>ACCESS Juvenile Hall</b>	3 days	3 days	3 days

## Academic Counselors and School Support Staff

This table displays information about academic counselors and support staff at the school and their full-time equivalent (FTE).

Academic Counselors and School Support Staff Data	
2017-18 School Year	
<b>Academic Counselors</b>	
<b>FTE of academic counselors</b>	0.0
<b>Average number of students per academic counselor</b>	◇
<b>Support Staff</b>	
<b>Social/behavioral counselor</b>	0.0
<b>Career development counselor</b>	0.0
<b>Library media teacher (librarian)</b>	1.0
<b>Library media services staff (paraprofessional)</b>	1.0
<b>Psychologist</b>	2.0
<b>Social worker</b>	7.0
<b>Nurse</b>	0.8
<b>Speech/language/hearing specialist</b>	0.5
<b>Resource specialist (nonteaching)</b>	0.0
<b>Other</b>	
<b>Transition specialist</b>	4.0
<b>Family community liaison</b>	2.0

## Financial Data

The financial data displayed in this SARC is from the 2016-17 fiscal year. The most current fiscal information available provided by the state is always two years behind the current school year and one year behind most other data included in this report. For detailed information on school expenditures for all districts in California, see the California Department of Education (CDE) Current Expense of Education & Per-pupil Spending web page at [www.cde.ca.gov/ds/fd/ec](http://www.cde.ca.gov/ds/fd/ec). For information on teacher salaries for all districts in California, see the CDE Certificated Salaries & Benefits web page at [www.cde.ca.gov/ds/fd/cs](http://www.cde.ca.gov/ds/fd/cs). To look up expenditures and salaries for a specific school district, see the Ed-Data website at [www.ed-data.org](http://www.ed-data.org).

## District Financial Data

This table displays district teacher and administrative salary information and compares the figures to the state averages for districts of the same type and size based on the salary schedule. Note: The district salary data does not include benefits.

Salary Data	2016-17 Fiscal Year	
	Orange CDE	Similar Sized District
Beginning teacher salary	⊕	⊕
Midrange teacher salary	⊕	⊕
Highest teacher salary	⊕	⊕
Average elementary school principal salary	⊕	⊕
Average middle school principal salary	⊕	⊕
Average high school principal salary	⊕	⊕
Superintendent salary	⊕	⊕
Teacher salaries: percentage of budget	⊕	⊕
Administrative salaries: percentage of budget	⊕	⊕

## Financial Data Comparison

This table displays the school's per-pupil expenditures from unrestricted sources and the school's average teacher salary and compares it to the district and state data.

Financial Data Comparison	2016-17 Fiscal Year	
	Expenditures Per Pupil From Unrestricted Sources	Annual Average Teacher Salary
ACCESS Juvenile Hall	\$23,661	\$111,521
Orange CDE	\$12,908	\$117,832
California	\$7,125	◇
School and district: percentage difference	+83.3%	-5.4%
School and California: percentage difference	+232.1%	◆

⊕ County Offices of Education that operate schools are not required to report this data.

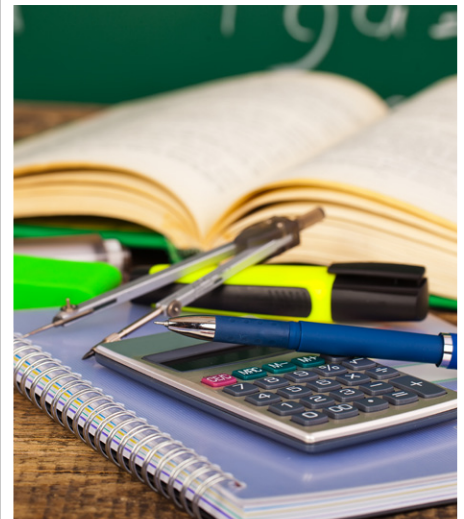
◇ Data is not available.

◆ The percentage difference cannot be calculated because California Annual Average Teacher Salary is not available.

## School Financial Data

The following table displays the school's average teacher salary and a breakdown of the school's expenditures per pupil from unrestricted and restricted sources.

School Financial Data	
2016-17 Fiscal Year	
Total expenditures per pupil	\$23,661
Expenditures per pupil from restricted sources	\$0
Expenditures per pupil from unrestricted sources	\$23,661
Annual average teacher salary	\$111,521



## Expenditures Per Pupil

Supplemental/restricted expenditures come from money whose use is controlled by law or by a donor. Money that is designated for specific purposes by the district or governing board is not considered restricted. Basic/unrestricted expenditures are from money whose use, except for general guidelines, is not controlled by law or by a donor.

Data for this year's SARC was provided by the California Department of Education and school and district offices. For additional information on California schools and districts and comparisons of the school to the district, the county and the state, please visit DataQuest at <http://dq.cde.ca.gov/dataquest>. DataQuest is an online resource that provides reports for accountability, test data, enrollment, graduates, dropouts, course enrollments, staffing and data regarding English learners. Per Education Code Section 35256, each school district shall make hard copies of its annually updated report card available, upon request, on or before February 1.

All data accurate as of December 2018.

School Accountability Report Card

PUBLISHED BY:

**SIA** School  
Innovations  
& Achievement  
[www.sia-us.com](http://www.sia-us.com) | 800.487.9234