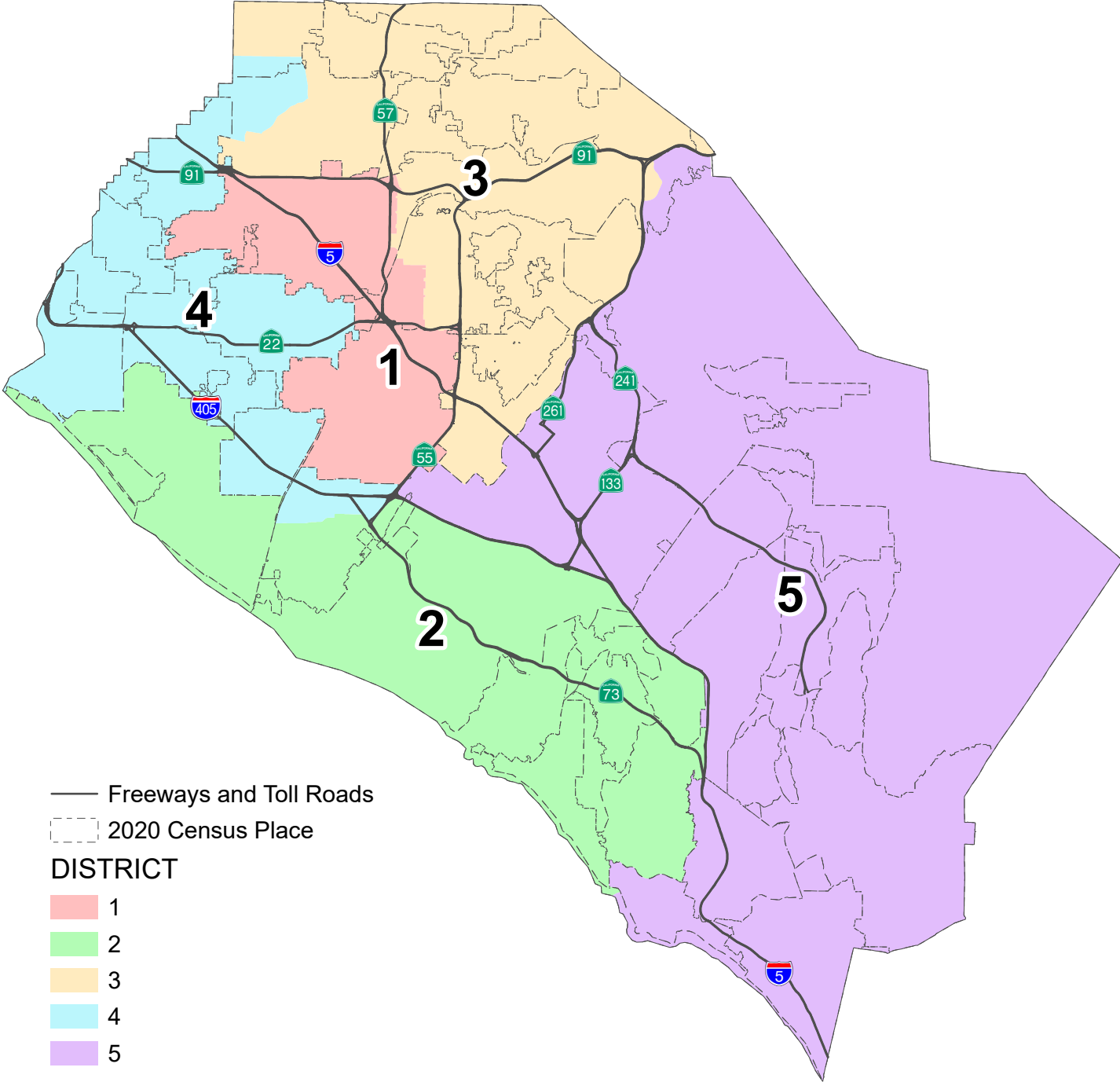


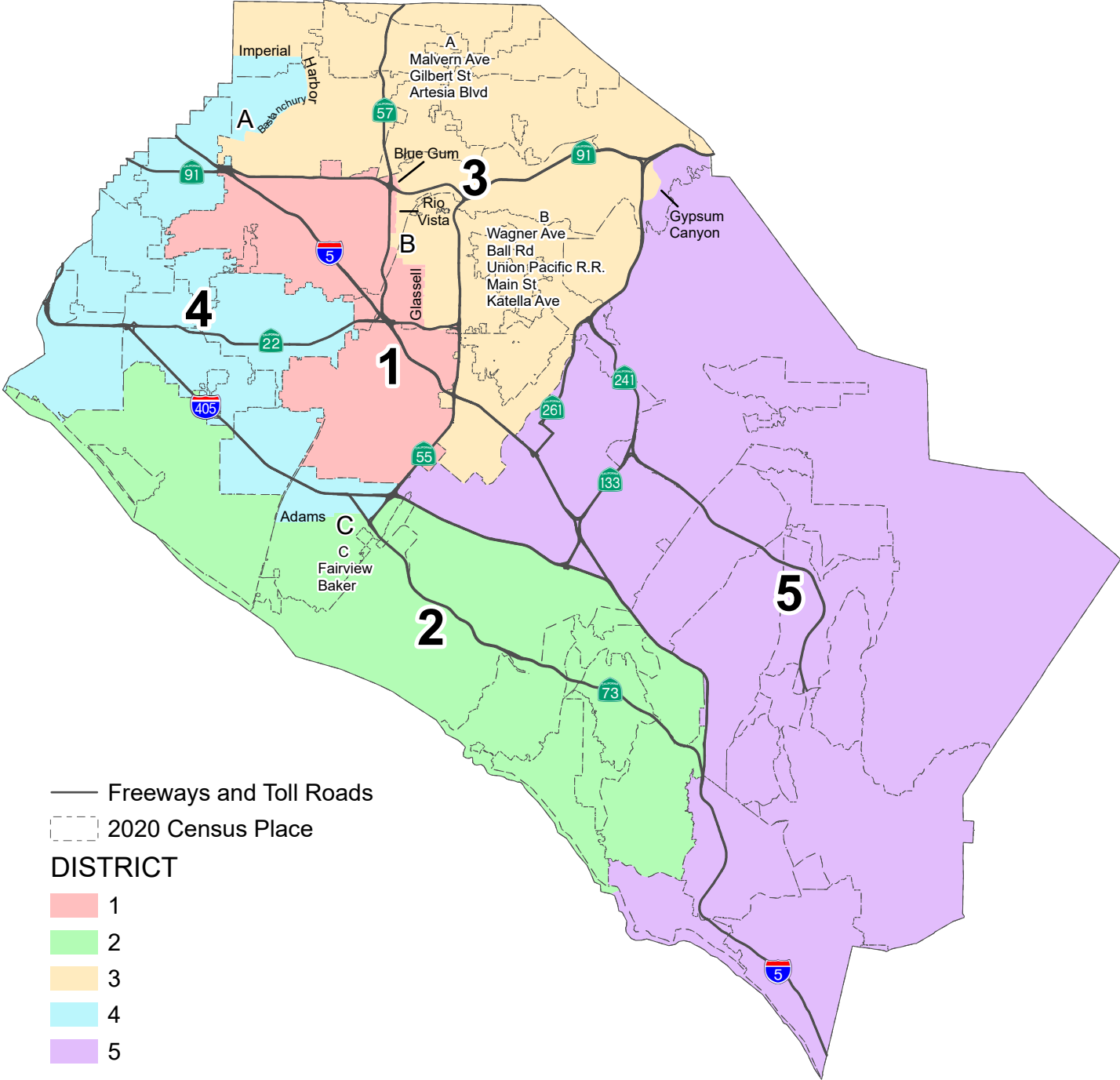
County of Orange 2021 Redistricting

Proposal 2 Map



County of Orange 2021 Redistricting

Proposal 2 Map (Annotated)



**PROPOSAL 2**  
**County of Orange 2021 Redistricting**

**Table 1. Adjusted 2020 Census Total Population by Race/Ethnicity**

| District     | Total Population | Hispanic or Latino of any Race | Non-Hispanic White | Non-Hispanic Black or African-American | Non-Hispanic American Indian or Alaska Native | Non-Hispanic Asian | Non-Hispanic Native Hawaiian or Other Pacific Islander | Non-Hispanic Some Other Race | Non-Hispanic Two or More Races |
|--------------|------------------|--------------------------------|--------------------|--|---|--------------------|--|------------------------------|--------------------------------|
| 1            | 634,905          | 431,360                        | 83,791             | 11,246                                 | 1,120   | 92,057             | 1,981  | 2,323                        | 11,027                         |
|              | 100.0%           | 67.9%                          | 13.2%              | 1.8%                                   | 0.2%  | 14.5%              | 0.3%   | 0.4%                         | 1.7%                           |
| 2            | 638,698          | 124,451                        | 373,482            | 8,653                                  | 1,017   | 91,998             | 1,203  | 3,721                        | 34,173                         |
|              | 100.0%           | 19.5%                          | 58.5%              | 1.4%                                   | 0.2%  | 14.4%              | 0.2%   | 0.6%                         | 5.4%                           |
| 3            | 641,120          | 232,229                        | 250,599            | 10,714                                 | 1,198   | 116,578            | 1,083  | 3,162                        | 25,557                         |
|              | 100.0%           | 36.2%                          | 39.1%              | 1.7%                                   | 0.2%  | 18.2%              | 0.2%   | 0.5%                         | 4.0%                           |
| 4            | 632,903          | 189,327                        | 163,660            | 10,423                                 | 985   | 243,208            | 2,601  | 2,532                        | 20,167                         |
|              | 100.0%           | 29.9%                          | 25.9%              | 1.6%                                   | 0.2%  | 38.4%              | 0.4%   | 0.4%                         | 3.2%                           |
| 5            | 645,384          | 112,914                        | 328,596            | 8,907                                  | 1,005   | 155,426            | 869  | 3,349                        | 34,318                         |
|              | 100.0%           | 17.5%                          | 50.9%              | 1.4%                                   | 0.2%  | 24.1%              | 0.1%   | 0.5%                         | 5.3%                           |
| COUNTY TOTAL | 3,193,010        | 1,090,281                      | 1,200,128          | 49,943                                 | 5,325   | 699,267            | 7,737  | 15,087                       | 125,242                        |
|              | 100.0%           | 34.1%                          | 37.6%              | 1.6%                                   | 0.2%  | 21.9%              | 0.2%   | 0.5%                         | 3.9%                           |

**Table 2. Difference from 2021 Target Supervisorial District Population of 638,602**

| District | Number | Percent | Percentage Spread (Largest - Smallest) |
|----------|--------|---------|--|
| 1        | -3,697 | -0.58%  | 1.95%                                  |
| 2        | 96     | 0.02%   |  |
| 3        | 2,518  | 0.39%   |  |
| 4        | -5,699 | -0.89%  |  |
| 5        | 6,782  | 1.06%   |  |

**Split Cities/Census Designated Places (CDPs) -**

Anaheim (3) Seal Beach (2)  
 Costa Mesa (2) Stanton (2)  
 Fullerton (2) Yorba Linda (2)  
 Garden Grove (2)  
 Irvine (2)  
 La Habra (2)  
 Orange (3)  
 Santa Ana (2)

Percent shares calculated using unrounded numbers, but table displays only to tenths; therefore, percents displayed may not sum to 100%.

Number in ( ) indicates number of Supervisorial Districts the city/CDP falls within.

The U.S. Census Bureau misassigned three (3) census blocks to the City of Tustin that are actually in the City of Santa Ana with a total of 260 population.

Submitted plan does not include assignment of three blocks that are in Santa Ana but Census Bureau misassigned to City of Tustin.

**PROPOSAL 2**  
**County of Orange 2021 Redistricting**

**Table 3. Adjusted Citizen Voting Age Population (CVAP) by Race/Ethnicity, 2015-2019 5-Year Estimates**

| District            | Total Estimated CVAP | Hispanic or Latino of any Race | Non-Hispanic White | Non-Hispanic Black or African-American | Non-Hispanic American Indian or Alaska Native | Hispanic Asian | Non-Hispanic Native Hawaiian or Other Pacific Islander | Non-Hispanic Two or More Races |
|---------------------|----------------------|--------------------------------|--------------------|--|---|----------------|--|--------------------------------|
| <b>1</b>            | 342,565              | 182,618                        | 82,028             | 8,680                                  | 549   | 61,589         | 1,684  | 3,754                          |
|                     | 100.0%               | 53.6%                          | 24.1%              | 2.5%                                   | 0.2%  | 18.1%          | 0.5%   | 1.1%                           |
| <b>2</b>            | 461,397              | 65,499                         | 317,620            | 7,136                                  | 1,007   | 56,548         | 937  | 11,736                         |
|                     | 100.0%               | 14.2%                          | 69.0%              | 1.5%                                   | 0.2%  | 12.3%          | 0.2%   | 2.5%                           |
| <b>3</b>            | 425,307              | 115,067                        | 224,984            | 8,587                                  | 594   | 66,803         | 681  | 7,897                          |
|                     | 100.0%               | 27.1%                          | 53.0%              | 2.0%                                   | 0.1%  | 15.7%          | 0.2%   | 1.9%                           |
| <b>4</b>            | 423,111              | 91,915                         | 155,251            | 8,794                                  | 917   | 155,464        | 1,650  | 8,430                          |
|                     | 100.0%               | 21.8%                          | 36.8%              | 2.1%                                   | 0.2%  | 36.8%          | 0.4%   | 2.0%                           |
| <b>5</b>            | 413,296              | 55,816                         | 266,678            | 6,358                                  | 866   | 70,988         | 615  | 11,236                         |
|                     | 100.0%               | 13.5%                          | 64.6%              | 1.5%                                   | 0.2%  | 17.2%          | 0.1%   | 2.7%                           |
| <b>COUNTY TOTAL</b> | 2,065,676            | 510,915                        | 1,046,561          | 39,555                                 | 3,933   | 411,392        | 5,567  | 43,053                         |
|                     | 100.0%               | 24.8%                          | 50.8%              | 1.9%                                   | 0.2%  | 20.0%          | 0.3%   | 2.1%                           |

Source: Statewide Database 2015-2019 Citizen Voting Age Population, adjusted to reflect reallocated incarcerated persons, on 2020 Census Blocks, Revised 9/27/2021 <https://statewidedatabase.org/redistricting2021/counties.html>

Notes: Percentages are calculated from sum of individual categories, not Total Estimated CVAP.

Because this is a special tabulation of data and not part of the standard data products shown on the Census Bureau's data.census.gov website, these estimates are rounded. Therefore, individual categories may not exactly add to the total.

For example, the sum of each of the race groups for non-Hispanics may not be the same as the estimate given for non-Hispanics. These estimates will not match counts from the 2020 Census.

The original data source for the Citizen Voting Age Population (CVAP) is the American Community Survey (ACS). The ACS is an ongoing survey by the U.S. Census Bureau sent to approximately 250,000 households each month.

The ACS estimates used to develop these data were collected from January 1, 2015 to December 31, 2019 utilizing the 2010 Census block groups, which were disaggregated to the 2020 Census blocks by the Statewide Database.

For more information about the CVAP products, visit <https://www.census.gov/programs-surveys/decennial-census/about/voting-rights/cvap.html> and

[https://www2.census.gov/programs-surveys/decennial/rdo/technical-documentation/special-tabulation/CVAP\\_2015-2019\\_ACS\\_documentation.pdf](https://www2.census.gov/programs-surveys/decennial/rdo/technical-documentation/special-tabulation/CVAP_2015-2019_ACS_documentation.pdf)

**PROPOSAL 2**  
**County of Orange 2021 Redistricting**

**Table 4. Adjusted 2020 Census Population by District and 2020 Census Place**

**DISTRICT 1**

| Place                   | Total Population | Percent of District |
|-------------------------|------------------|---------------------|
| Anaheim*                | 278,540          | 43.9%               |
| Garden Grove*           | 146              | 0.0%                |
| Orange*                 | 34,238           | 5.4%                |
| Santa Ana*              | 311,106          | 49.0%               |
| Stanton*                | 0                | 0.0%                |
| Unincorporated          | 10,875           | 1.7%                |
| <b>District 1 Total</b> | <b>634,905</b>   | <b>100.0%</b>       |

**DISTRICT 2**

| Place                   | Total Population | Percent of District |
|-------------------------|------------------|---------------------|
| Aliso Viejo             | 52,222           | 8.2%                |
| Costa Mesa*             | 79,591           | 12.5%               |
| Huntington Beach        | 199,033          | 31.2%               |
| Irvine*                 | 83,954           | 13.1%               |
| Laguna Beach            | 23,061           | 3.6%                |
| Laguna Hills            | 31,399           | 4.9%                |
| Laguna Niguel           | 64,417           | 10.1%               |
| Laguna Woods            | 17,658           | 2.8%                |
| Newport Beach           | 85,338           | 13.4%               |
| Seal Beach*             | 0                | 0.0%                |
| Unincorporated          | 2,025            | 0.3%                |
| <b>District 2 Total</b> | <b>638,698</b>   | <b>100.0%</b>       |

**DISTRICT 3**

| Place                   | Total Population | Percent of District |
|-------------------------|------------------|---------------------|
| Anaheim*                | 69,213           | 10.8%               |
| Brea                    | 47,397           | 7.4%                |
| Fullerton*              | 119,847          | 18.7%               |
| La Habra*               | 55,069           | 8.6%                |
| North Tustin CDP        | 25,749           | 4.0%                |
| Orange*                 | 105,953          | 16.5%               |
| Placentia               | 51,925           | 8.1%                |
| Santa Ana*              | 287              | 0.0%                |
| Tustin                  | 80,412           | 12.5%               |
| Unincorporated          | 11,003           | 1.7%                |
| Villa Park              | 5,850            | 0.9%                |
| Yorba Linda*            | 68,415           | 10.7%               |
| <b>District 3 Total</b> | <b>641,120</b>   | <b>100.0%</b>       |

**DISTRICT 4**

| Place                   | Total Population | Percent of District |
|-------------------------|------------------|---------------------|
| Buena Park              | 84,187           | 13.3%               |
| Costa Mesa*             | 32,548           | 5.1%                |
| Cypress                 | 50,235           | 7.9%                |
| Fountain Valley         | 57,120           | 9.0%                |
| Fullerton*              | 24,083           | 3.8%                |
| Garden Grove*           | 172,200          | 27.2%               |
| La Habra*               | 8,165            | 1.3%                |
| La Palma                | 15,597           | 2.5%                |
| Los Alamitos            | 11,795           | 1.9%                |
| Midway City CDP         | 8,845            | 1.4%                |
| Rossmoor CDP            | 10,634           | 1.7%                |
| Seal Beach*             | 25,283           | 4.0%                |
| Stanton*                | 38,067           | 6.0%                |
| Unincorporated          | 3,061            | 0.5%                |
| Westminster             | 91,083           | 14.4%               |
| <b>District 4 Total</b> | <b>632,903</b>   | <b>100.0%</b>       |

**DISTRICT 5**

| Place                    | Total Population | Percent of District |
|--------------------------|------------------|---------------------|
| Anaheim*                 | 0                | 0.0%                |
| Coto de Caza CDP         | 14,723           | 2.3%                |
| Dana Point               | 33,144           | 5.1%                |
| Irvine*                  | 224,004          | 34.7%               |
| Ladera Ranch CDP         | 26,188           | 4.1%                |
| Lake Forest              | 85,965           | 13.3%               |
| Las Flores CDP           | 6,004            | 0.9%                |
| Mission Viejo            | 93,760           | 14.5%               |
| Modjeska CDP             | 632              | 0.1%                |
| Orange*                  | 0                | 0.0%                |
| Rancho Mission Viejo CDP | 10,385           | 1.6%                |
| Rancho Santa Margarita   | 48,000           | 7.4%                |
| San Clemente             | 64,384           | 10.0%               |
| San Juan Capistrano      | 35,271           | 5.5%                |
| Silverado CDP            | 932              | 0.1%                |
| Trabuco Canyon CDP       | 1,020            | 0.2%                |
| Unincorporated           | 879              | 0.1%                |
| Williams Canyon CDP      | 93               | 0.0%                |
| Yorba Linda*             | 0                | 0.0%                |
| <b>District 5 Total</b>  | <b>645,384</b>   | <b>100.0%</b>       |

\*City split by proposed district.

Percent shares calculated using unrounded numbers, but table displays only to tenths; therefore, percents displayed may not sum to 100%.

**PROPOSAL 2**  
**County of Orange 2021 Redistricting**

**Table 5. Adjusted 2020 Census Population 18 Years and Over by Race/Ethnicity**

| District            | Total Population 18 and Over | Hispanic or Latino of any Race | Non-Hispanic White | Non-Hispanic Black or African-American | Non-Hispanic American Indian or Alaska Native | Non-Hispanic Asian | Non-Hispanic Native Hawaiian or Other Pacific Islander | Non-Hispanic Some Other Race | Non-Hispanic Two or More Races |
|---------------------|------------------------------|--------------------------------|--------------------|--|---|--------------------|--|------------------------------|--------------------------------|
| <b>1</b>            | 484,785                      | 310,108                        | 75,022             | 9,407                                  | 908   | 78,268             | 1,600  | 1,585                        | 7,887                          |
|                     | 100.0%                       | 64.0%                          | 15.5%              | 1.9%                                   | 0.2%  | 16.1%              | 0.3%   | 0.3%                         | 1.6%                           |
| <b>2</b>            | 528,793                      | 93,517                         | 321,440            | 7,613                                  | 920   | 78,241             | 957  | 2,855                        | 23,250                         |
|                     | 100.0%                       | 17.7%                          | 60.8%              | 1.4%                                   | 0.2%  | 14.8%              | 0.2%   | 0.5%                         | 4.4%                           |
| <b>3</b>            | 504,530                      | 166,966                        | 214,108            | 8,885                                  | 1,033   | 93,976             | 868  | 2,326                        | 16,368                         |
|                     | 100.0%                       | 33.1%                          | 42.4%              | 1.8%                                   | 0.2%  | 18.6%              | 0.2%   | 0.5%                         | 3.2%                           |
| <b>4</b>            | 505,416                      | 136,436                        | 142,868            | 8,442                                  | 841   | 199,637            | 2,064  | 1,906                        | 13,222                         |
|                     | 100.0%                       | 27.0%                          | 28.3%              | 1.7%                                   | 0.2%  | 39.5%              | 0.4%   | 0.4%                         | 2.6%                           |
| <b>5</b>            | 502,155                      | 80,490                         | 269,965            | 7,120                                  | 800   | 119,741            | 715  | 2,458                        | 20,866                         |
|                     | 100.0%                       | 16.0%                          | 53.8%              | 1.4%                                   | 0.2%  | 23.8%              | 0.1%   | 0.5%                         | 4.2%                           |
| <b>COUNTY TOTAL</b> | 2,525,679                    | 787,517                        | 1,023,403          | 41,467                                 | 4,502   | 569,863            | 6,204  | 11,130                       | 81,593                         |
|                     | 100.0%                       | 31.2%                          | 40.5%              | 1.6%                                   | 0.2%  | 22.6%              | 0.2%   | 0.4%                         | 3.2%                           |

Percent shares calculated using unrounded numbers, but table displays only to tenths; therefore, percents displayed may not sum to 100%.

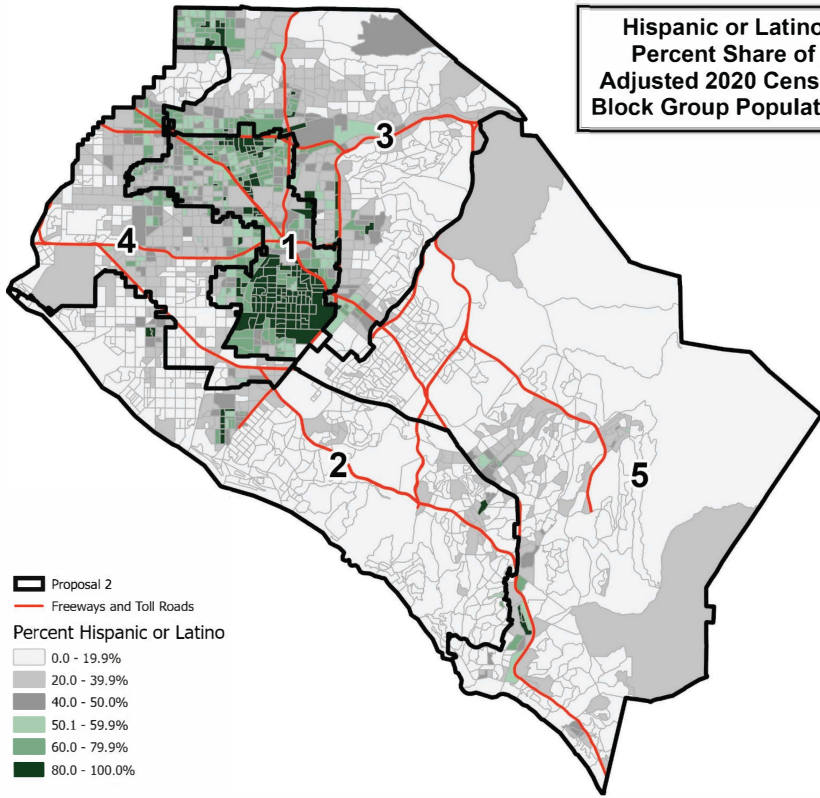
Source: Statewide Database; Adjusted, incarcerated persons reallocated P.L. 94-171 2020 Redistricting Data, Revised 9/27/2021

## **PROPOSAL 2**

Contact Name: Rosio Viguera  
Organization: N/A  
Submitted Description: "A redistricting plan focused on equal representation and keeping communities of interest together.

Plan Objectives  
Keep communities of interest together and maximize equal representation."

**Hispanic or Latino  
Percent Share of  
Adjusted 2020 Census  
Block Group Population**



**Non-Hispanic Asian  
Percent Share of  
Adjusted 2020 Census  
Block Group Population**

