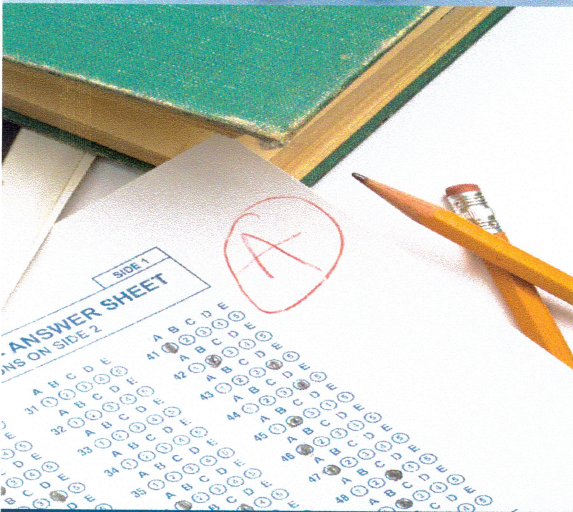
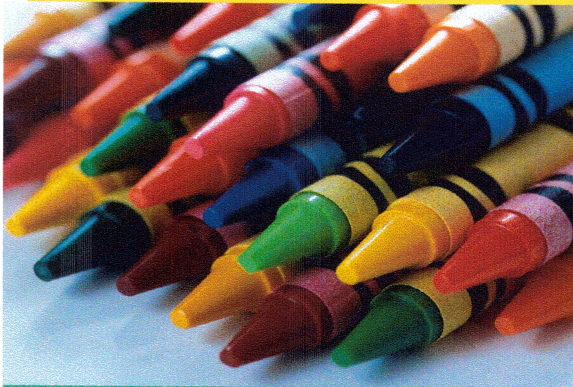


WILLIAM M. HABERMEHL
County Superintendent of Schools

Racial & Ethnic Survey Fall 2008



Dedicated to World
Class Education
Where Every Student
Succeeds



ORANGE COUNTY DEPARTMENT OF EDUCATION

BOARD MEMBERS

KEN L. WILLIAMS, D.O.
President

ALEXANDRIA CORONADO, D.M.A.
Vice President

ELIZABETH PARKER
Member

LONG PHAM, Ph.D.
Member

JOHN “JACK” W. BEDELL, Ph.D.
Member



Publication Date: September 2009

FALL 2008 RACIAL AND ETHNIC SURVEY

The Fall 2008 Racial and Ethnic Survey report was compiled and published by the Orange County Department of Education. It contains data abstracted from the California School Information Services (CSIS) and Statewide Student Identifier (SSID) reports filed by schools in Orange County to the California Department of Education (CDE). In previous years, dropout totals were calculated for grades 7 through 12. Beginning in 2008, dropout counts are only calculated for grades 9 through 12, to be consistent with figures reported by the CDE.

We sincerely hope this report will better serve school districts and local agencies in providing a better education for all students in Orange County. Please note that percentages may not add to exactly 100% due to rounding.

The following information highlights Fall 2008 data shown in this report.

▪ Fall 2008 Enrollment		
Elementary School Districts		93,774
High School Districts		66,178
Unified School Districts		336,379
County Operated Schools		<u>8,204</u>
Total Enrollment		504,535
▪ Ethnic Recap		
American Indian		2,481
Asian		70,033
Pacific Islander		2,774
Filipino		8,994
Hispanic		225,665
African American (Not of Hispanic Origin)		8,484
White (Not of Hispanic Origin)		165,529
Multiple or No Response		20,575
▪ 2007-2008 12 th Grade Enrollment & High School Graduate		
High School Graduate Count		33,320
12 th Grade Countywide Enrollment		38,035
▪ 9 th – 12 th Grades Dropout Rates*		
2007-2008 Dropout Percentage		1.2%
2006-2007 Dropout Percentage		0.8%

*The County Survey is based on grades 9 through 12 in K-12 school districts (excludes county office programs). Other studies may be calculated with a different base.

We wish to thank those individuals and school districts who prepared and submitted data to make this report possible. If you have any questions about this report, please call the Business Services Department at (714) 966-4232.

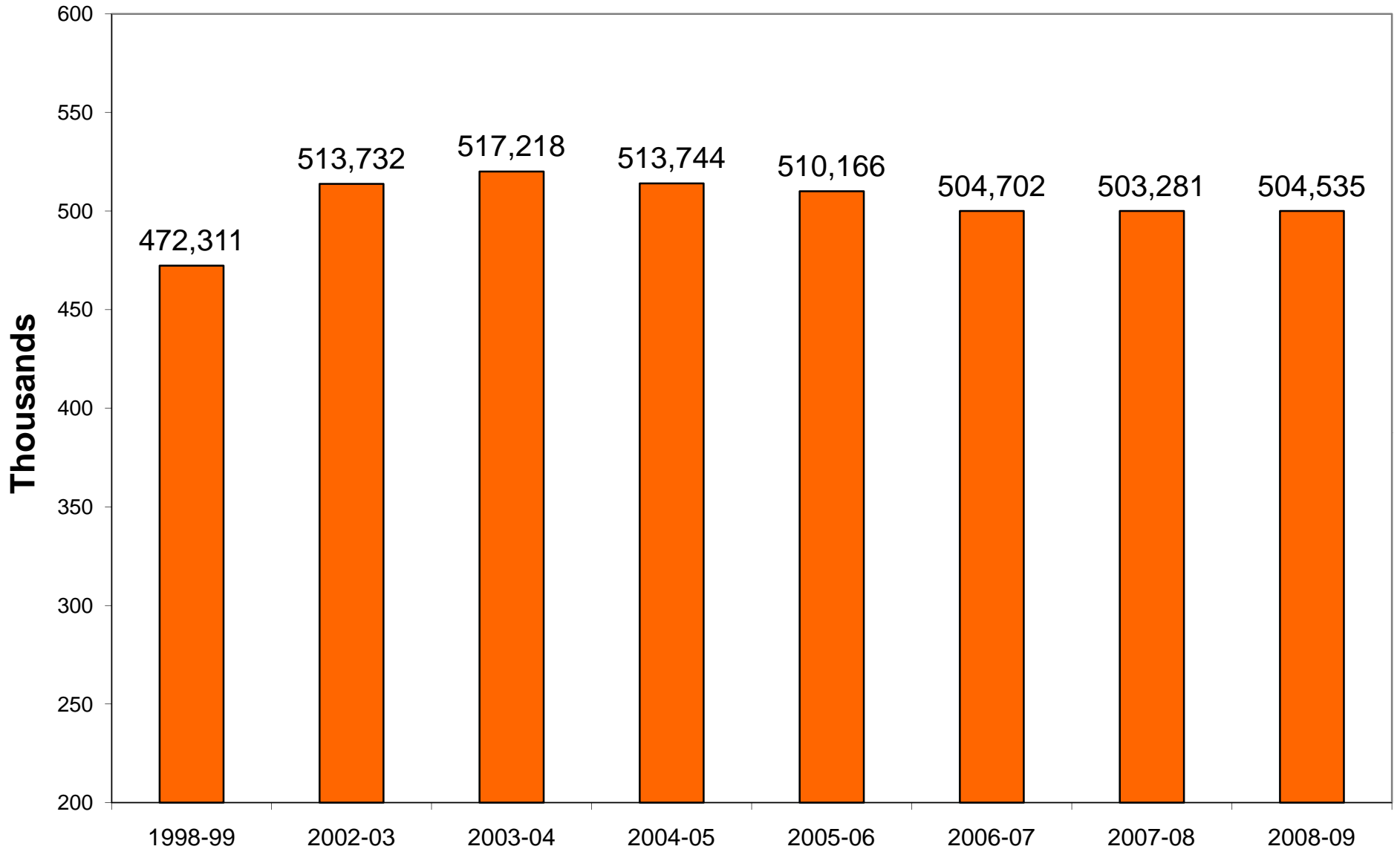

 William M. Habermehl
 County Superintendent of Schools

Orange County Department of Education
Racial and Ethnic Survey Fall 2008

TABLE OF CONTENTS

	PAGE
1999 – 2008 ORANGE COUNTY K – 12 ENROLLMENT COMPARISON	1
2008 – 2009 ORANGE COUNTY RACIAL & ETHNIC SUMMARY	2
2004 & 2008 FIVE YEAR RACIAL & ETHNIC COMPARISON.....	3
2004 - 2008 FIVE YEAR ENROLLMENT COMPARISON.....	4
2008 - 2009 PUPIL MEMBERSHIP COUNT & PERCENTAGE.....	5
2008 - 2009 PUPIL MEMBERSHIP COMPARISON TO 2007 - 2008.....	31
2008 - 2009 ETHNIC RECAP BY GRADE LEVEL	36
2007 -2008 HIGH SCHOOL GRADUATE COUNT & PERCENTAGE.....	44
2007 - 2008 DISTRICT DROPOUT COUNT & PERCENTAGE.....	45
2007 - 2008 DISTRICT DROPOUT RATES.....	47

K-12 Enrollment



Orange County Department of Education
Racial and Ethnic Survey Fall 2008

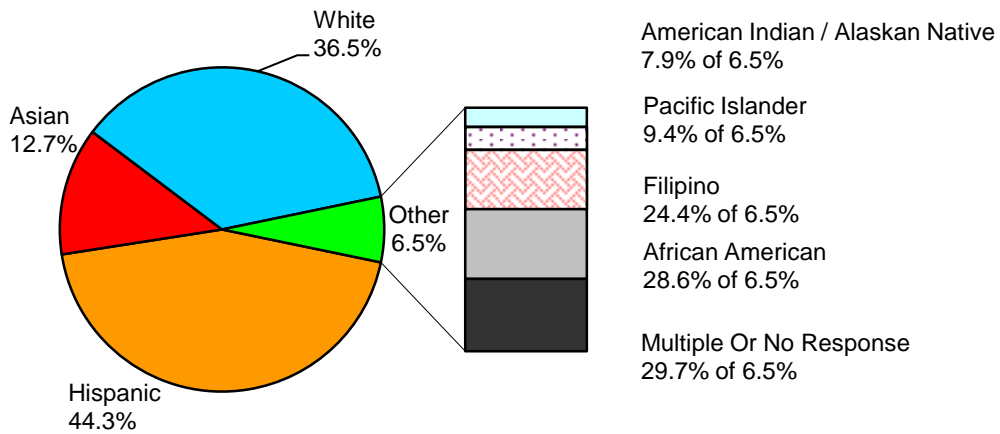
2008 – 2009
RACIAL AND ETHNIC SUMMARY

<u>Ethnic Classification</u>	PUPIL MEMBERSHIP	
	<u>Count</u>	<u>Percentage</u>
American Indian / Alaskan Native	2,481	0.49%
Asian	70,033	13.88%
Pacific Islander	2,774	0.55%
Filipino	8,994	1.78%
Hispanic	225,665	44.73%
African American (Not of Hispanic Origin)	8,484	1.68%
White (Not of Hispanic Origin)	165,529	32.81%
Multiple Or No Response	20,575	4.08%

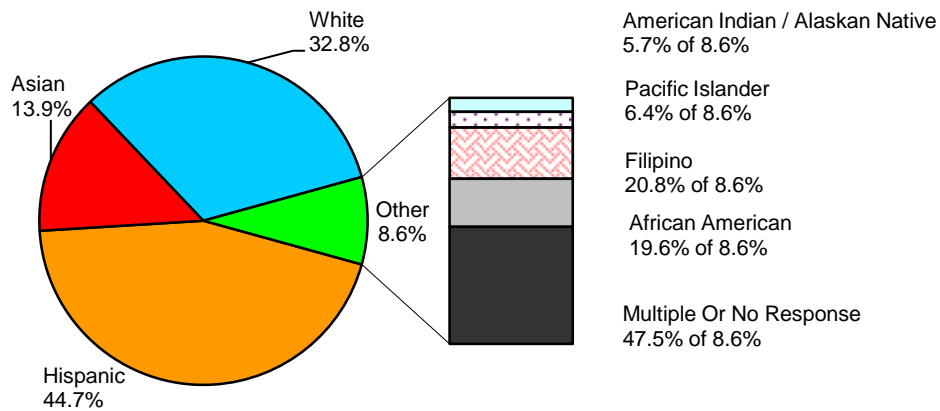
Orange County Department of Education Racial and Ethnic Survey Fall 2008

ORANGE COUNTY PUBLIC SCHOOLS Five Year Racial & Ethnic Comparison

2004



2008



Orange County School District Enrollment 5 Year Comparison

Fiscal Year	Student Enrollment	Prior Year % Increase/ Decrease
2008-09	504,535	0.2%
2007-08	503,281	-0.2%
2006-07	504,072	-1.2%
2005-06	510,166	-0.7%
2004-05	513,744	-0.7%

Countywide enrollment increased by 0.2%. We have twelve districts with declining enrollment. Current trend indicates that enrollment will remain relatively flat in 2009-10.

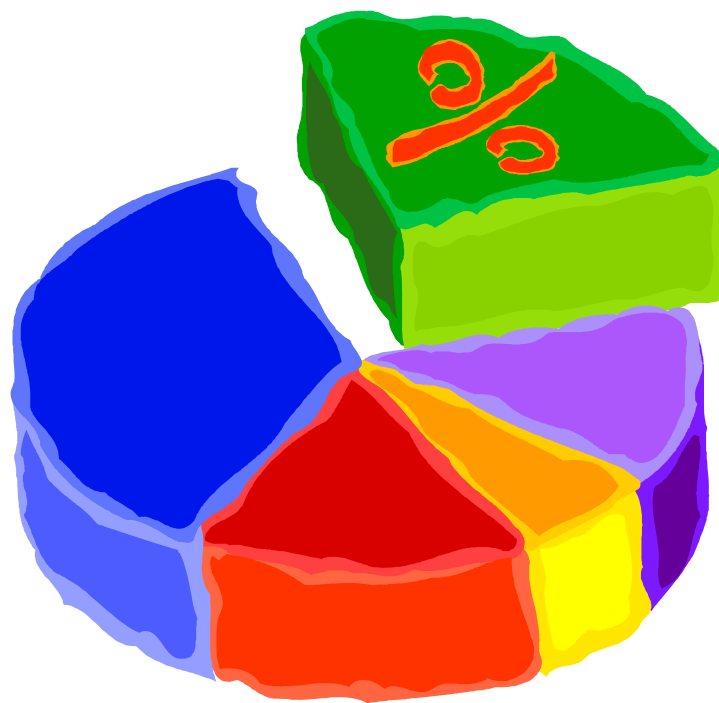


WILLIAM M. HABERMEHL
County Superintendent of Schools

Orange County Department of Education

Racial and Ethnic Survey Fall 2008

PUPIL MEMBERSHIP
COUNT & PERCENTAGE



ORANGE COUNTY DEPARTMENT OF EDUCATION

PUPIL MEMBERSHIP COUNT AND PERCENTAGE

SCHOOL DISTRICT School Name	AMER IND ALASK NAT	ASIAN	PACIFIC ISLANDER	FILIPINO	HISPANIC	NOT OF HISPANIC ORIGIN		MULTIPLE NO RESP	TOTALS
						AFR AMER	WHITE		
ANAHEIM CITY									
Barton Elem	5 0.7%	117 16.4%	11 1.5%	35 4.9%	397 55.5%	15 2.1%	108 15.1%	27 3.8%	715
Edison Elem	1 0.1%	16 1.8%	3 0.3%	10 1.1%	862 95.7%	1 0.1%	7 0.8%	1 0.1%	901
Franklin Elem	3 0.4%	13 1.7%	3 0.4%	6 0.8%	664 89.1%	12 1.6%	32 4.3%	12 1.6%	745
Gauer Elem	- 0.0%	65 9.7%	5 0.7%	28 4.2%	518 77.4%	20 3.0%	21 3.1%	12 1.8%	669
Guinn Elem	2 0.2%	50 6.0%	7 0.8%	9 1.1%	677 80.7%	25 3.0%	58 6.9%	11 1.3%	839
Henry Elem	4 0.5%	12 1.5%	5 0.6%	8 1.0%	713 91.1%	8 1.0%	26 3.3%	7 0.9%	783
Jefferson Elem	- 0.0%	8 1.4%	1 0.2%	4 0.7%	517 93.5%	4 0.7%	8 1.4%	11 2.0%	553
Olive Elem	1 0.1%	4 0.6%	1 0.1%	1 0.1%	675 95.6%	5 0.7%	11 1.6%	8 1.1%	706
Juarez Elem	- 0.0%	43 5.4%	7 0.9%	20 2.5%	625 78.9%	11 1.4%	72 9.1%	14 1.8%	792
Key Elem	2 0.3%	19 2.7%	4 0.6%	5 0.7%	632 90.8%	8 1.1%	26 3.7%	- 0.0%	696
Lincoln Elem	- 0.0%	4 0.5%	- 0.0%	14 1.8%	732 95.6%	3 0.4%	13 1.7%	- 0.0%	766
Loara Elem	3 0.6%	59 11.0%	3 0.6%	36 6.7%	340 63.3%	19 3.5%	64 11.9%	13 2.4%	537
Madison Elem	3 0.4%	80 11.6%	9 1.3%	9 1.3%	499 72.4%	24 3.5%	64 9.3%	1 0.1%	689
Mann Elem	4 0.3%	21 1.5%	- 0.0%	4 0.3%	1,273 93.7%	12 0.9%	30 2.2%	14 1.0%	1,358
Marshall Elem	2 0.2%	53 6.6%	5 0.6%	18 2.2%	666 82.7%	9 1.1%	33 4.1%	19 2.4%	805
Orange Grove	2 0.3%	11 1.5%	3 0.4%	9 1.2%	673 89.3%	13 1.7%	26 3.4%	17 2.3%	754
Palm Lane Elem	6 0.7%	49 5.8%	1 0.1%	9 1.1%	695 82.9%	32 3.8%	30 3.6%	16 1.9%	838
Price Elem	5 0.7%	17 2.3%	6 0.8%	25 3.3%	618 82.4%	26 3.5%	47 6.3%	6 0.8%	750
Revere Elem	2 0.2%	10 1.1%	7 0.8%	6 0.7%	846 92.8%	7 0.8%	22 2.4%	12 1.3%	912
Roosevelt Elem	- 0.0%	26 4.1%	5 0.8%	7 1.1%	531 83.8%	5 0.8%	54 8.5%	6 0.9%	634
Ross Elem	3 0.3%	29 2.5%	6 0.5%	16 1.4%	1,024 89.0%	10 0.9%	61 5.3%	2 0.2%	1,151
Stoddard Elem	4 0.5%	122 14.9%	11 1.3%	24 2.9%	549 67.0%	13 1.6%	87 10.6%	9 1.1%	819
Sunkist Elem	1 0.1%	37 3.5%	- 0.0%	13 1.2%	928 88.0%	5 0.5%	48 4.6%	22 2.1%	1,054
Westmont Elem	3 0.4%	23 2.9%	11 1.4%	21 2.6%	645 80.9%	32 4.0%	46 5.8%	16 2.0%	797
NPS Students	- 0.0%	- 0.0%	- 0.0%	- 0.0%	7 46.7%	3 20.0%	4 26.7%	1 6.7%	15
ANAHEIM CITY TOTALS	56 0.3%	888 4.6%	114 0.6%	337 1.7%	16,306 84.6%	322 1.7%	998 5.2%	257 1.3%	19,278

* NPS means a private, nonsectarian school that enrolls individuals with exceptional needs pursuant to an individualized education program.

ORANGE COUNTY DEPARTMENT OF EDUCATION

PUPIL MEMBERSHIP COUNT AND PERCENTAGE

SCHOOL DISTRICT School Name	AMER IND ALASK NAT	ASIAN	PACIFIC ISLANDER	FILIPINO	HISPANIC	NOT OF HISPANIC ORIGIN		MULTIPLE NO RESP	TOTALS
						AFR AMER	WHITE		
<u>BUENA PARK</u>									
Beatty Elem	1 0.1%	237 23.8%	3 0.3%	47 4.7%	478 48.1%	58 5.8%	108 10.9%	62 6.2%	994
Corey Elem	- 0.0%	70 11.4%	9 1.5%	58 9.5%	227 37.1%	51 8.3%	131 21.4%	66 10.8%	612
Emery Elem	3 0.4%	265 36.7%	8 1.1%	32 4.4%	275 38.1%	23 3.2%	80 11.1%	36 5.0%	722
Gilbert Elem	3 0.4%	22 3.1%	4 0.6%	22 3.1%	555 79.2%	32 4.6%	41 5.8%	22 3.1%	701
Pendleton Elem	3 0.5%	15 2.5%	4 0.7%	25 4.2%	441 74.5%	37 6.3%	35 5.9%	32 5.4%	592
Whitaker Elem	4 0.5%	37 5.1%	6 0.8%	21 2.9%	510 69.8%	44 6.0%	63 8.6%	46 6.3%	731
Buena Park Jr High	3 0.2%	133 11.0%	4 0.3%	57 4.7%	748 61.7%	77 6.4%	150 12.4%	40 3.3%	1,212
NPS Students	- 0.0%	- 0.0%	- 0.0%	- 0.0%	4 0.0%	- 0.0%	4 0.0%	2 0.0%	10
BUENA PARK TOTALS	17 0.3%	779 14.0%	38 0.7%	262 4.7%	3,238 58.1%	322 5.8%	612 11.0%	306 5.5%	5,574
<u>CENTRALIA</u>									
Buena Terra Elem	2 0.5%	35 8.9%	2 0.5%	37 9.4%	141 36.0%	8 2.0%	116 29.6%	51 13.0%	392
Centralia Elem	1 0.2%	17 3.0%	8 1.4%	28 4.9%	409 71.6%	17 3.0%	40 7.0%	51 8.9%	571
Danbrook Elem	1 0.1%	37 5.1%	8 1.1%	20 2.8%	524 72.2%	17 2.3%	53 7.3%	66 9.1%	726
Dysinger Elem	- 0.0%	29 6.1%	3 0.6%	34 7.1%	167 35.0%	13 2.7%	125 26.2%	106 22.2%	477
Knott Elem	2 0.4%	71 13.3%	4 0.8%	26 4.9%	269 50.6%	23 4.3%	64 12.0%	73 13.7%	532
Los Coyotes Elem	- 0.0%	187 37.6%	3 0.6%	26 5.2%	56 11.3%	14 2.8%	108 21.7%	103 20.7%	497
Miller Elem	- 0.0%	177 31.9%	- 0.0%	67 12.1%	122 22.0%	15 2.7%	75 13.5%	99 17.8%	555
San Marino Elem	3 0.5%	83 13.6%	2 0.3%	48 7.9%	218 35.7%	28 4.6%	131 21.5%	97 15.9%	610
Temple Elem	3 0.8%	37 9.6%	2 0.5%	38 9.9%	176 45.7%	11 2.9%	58 15.1%	60 15.6%	385
NPS Students	- 0.0%	- 0.0%	- 0.0%	- 0.0%	3 42.9%	1 14.3%	2 28.6%	1 14.3%	7
CENTRALIA TOTALS	12 0.3%	673 14.2%	32 0.7%	324 6.8%	2,085 43.9%	147 3.1%	772 16.2%	707 14.9%	4,752
<u>CYPRESS</u>									
Arnold Elem	2 0.4%	195 35.6%	1 0.2%	34 6.2%	112 20.4%	37 6.8%	152 27.7%	15 2.7%	548
Cawthon Elem	2 0.5%	97 22.7%	3 0.7%	19 4.4%	86 20.1%	18 4.2%	194 45.3%	9 2.1%	428
Dickerson Elem	4 1.0%	55 14.3%	1 0.3%	23 6.0%	121 31.4%	6 1.6%	166 43.1%	9 2.3%	385
King Elem	2 0.4%	144 30.8%	1 0.2%	42 9.0%	155 33.2%	31 6.6%	92 19.7%	- 0.0%	467
Landell Elem	- 0.0%	279 53.0%	1 0.2%	28 5.3%	44 8.4%	11 2.1%	161 30.6%	2 0.4%	526
Luther Elem	2 0.5%	167 40.4%	10 2.4%	34 8.2%	69 16.7%	23 5.6%	96 23.2%	12 2.9%	413

ORANGE COUNTY DEPARTMENT OF EDUCATION

PUPIL MEMBERSHIP COUNT AND PERCENTAGE

SCHOOL DISTRICT School Name	AMER IND ALASK NAT	ASIAN	PACIFIC ISLANDER	FILIPINO	HISPANIC	NOT OF HISPANIC ORIGIN		MULTIPLE NO RESP	TOTALS
						AFR AMER	WHITE		
Morris Elem	1 0.2%	204 39.9%	2 0.4%	21 4.1%	86 16.8%	7 1.4%	176 34.4%	14 2.7%	511
Swain Elem	2 0.5%	57 13.1%	7 1.6%	20 4.6%	215 49.3%	31 7.1%	88 20.2%	16 3.7%	436
Vessels Elem	2 0.5%	68 18.7%	10 2.7%	21 5.8%	75 20.6%	16 4.4%	158 43.4%	14 3.8%	364
NPS Students	- 0.0%	- 0.0%	- 0.0%	- 0.0%	2 40.0%	- 0.0%	3 60.0%	- 0.0%	5
CYPRESS TOTALS	17 0.4%	1,266 31.0%	36 0.9%	242 5.9%	965 23.6%	180 4.4%	1,286 31.5%	91 2.2%	4,083
<u>FOUNTAIN VALLEY</u>									
Courreges Elem	1 0.2%	209 33.0%	- 0.0%	7 1.1%	44 7.0%	3 0.5%	326 51.5%	43 6.8%	633
Cox Elem	7 0.9%	275 36.5%	10 1.3%	20 2.7%	176 23.3%	13 1.7%	228 30.2%	25 3.3%	754
Gisler Elem	3 0.6%	83 16.6%	3 0.6%	8 1.6%	67 13.4%	4 0.8%	332 66.4%	- 0.0%	500
Moiola Elem	3 0.6%	143 26.8%	2 0.4%	9 1.7%	46 8.6%	3 0.6%	315 59.0%	13 2.4%	534
Newland Elem	2 0.5%	47 12.8%	4 1.1%	6 1.6%	31 8.4%	1 0.3%	255 69.3%	22 6.0%	368
Oka Elem	5 1.3%	50 13.4%	3 0.8%	5 1.3%	73 19.6%	5 1.3%	222 59.7%	9 2.4%	372
Plavan Elem	- 0.0%	190 46.7%	2 0.5%	3 0.7%	49 12.0%	5 1.2%	141 34.6%	17 4.2%	407
Tamura Elem	- 0.0%	166 38.6%	3 0.7%	6 1.4%	37 8.6%	1 0.2%	205 47.7%	12 2.8%	430
Fulton Middle	8 1.0%	238 29.8%	4 0.5%	8 1.0%	74 9.3%	7 0.9%	445 55.7%	15 1.9%	799
Masuda Middle	6 0.7%	331 40.0%	3 0.4%	18 2.2%	141 17.0%	6 0.7%	316 38.2%	6 0.7%	827
Talbert Middle	4 0.8%	58 11.2%	7 1.4%	7 1.4%	88 17.0%	4 0.8%	333 64.3%	17 3.3%	518
NPS Students	- 0.0%	- 0.0%	- 0.0%	- 0.0%	1 33.3%	- 0.0%	2 66.7%	- 0.0%	3
FOUNTAIN VALLEY TOTALS	39 0.6%	1,790 29.1%	41 0.7%	97 1.6%	827 13.5%	52 0.8%	3,120 50.8%	179 2.9%	6,145
<u>FULLERTON</u>									
Acacia Elem	3 0.6%	76 14.6%	1 0.2%	10 1.9%	106 20.3%	5 1.0%	292 56.0%	28 5.4%	521
Beechwood Elem	3 0.4%	138 17.2%	3 0.4%	16 2.0%	114 14.2%	10 1.2%	395 49.3%	122 15.2%	801
Commonwealth Elem	1 0.2%	36 8.8%	5 1.2%	4 1.0%	291 71.1%	10 2.4%	41 10.0%	21 5.1%	409
Fern Drive Elem	2 0.4%	109 20.6%	3 0.6%	7 1.3%	125 23.6%	3 0.6%	210 39.6%	71 13.4%	530
Golden Hill Elem	2 0.3%	70 10.0%	1 0.1%	6 0.9%	225 32.1%	5 0.7%	304 43.3%	89 12.7%	702
Hermosa Drive Elem	2 0.5%	31 7.1%	1 0.2%	2 0.5%	164 37.4%	1 0.2%	190 43.3%	48 10.9%	439
Laguna Road Elem	- 0.0%	324 54.4%	- 0.0%	7 1.2%	40 6.7%	6 1.0%	156 26.2%	63 10.6%	596
Maple Elem	- 0.0%	2 0.5%	- 0.0%	- 0.0%	414 97.0%	3 0.7%	3 0.7%	5 1.2%	427
Orangethorpe Elem	1 0.1%	37 4.7%	1 0.1%	10 1.3%	530 67.4%	24 3.1%	117 14.9%	66 8.4%	786

ORANGE COUNTY DEPARTMENT OF EDUCATION

PUPIL MEMBERSHIP COUNT AND PERCENTAGE

SCHOOL DISTRICT School Name	AMER IND ALASK NAT	ASIAN	PACIFIC ISLANDER	FILIPINO	HISPANIC	NOT OF HISPANIC ORIGIN		MULTIPLE NO RESP	TOTALS
						AFR AMER	WHITE		
Pacific Drive Elem	5 0.7%	38 5.6%	1 0.1%	11 1.6%	473 69.6%	9 1.3%	108 15.9%	35 5.1%	680
Raymond Elem	2 0.4%	15 3.3%	2 0.4%	4 0.9%	295 64.8%	11 2.4%	83 18.2%	43 9.5%	455
Richman Elem	1 0.1%	22 2.7%	8 1.0%	5 0.6%	741 90.6%	5 0.6%	21 2.6%	15 1.8%	818
Robert C. Fisler Elem	3 0.5%	75 13.1%	2 0.3%	11 1.9%	129 22.5%	17 3.0%	264 46.1%	72 12.6%	573
Rolling Hills Elem	2 0.2%	627 71.7%	3 0.3%	55 6.3%	47 5.4%	6 0.7%	79 9.0%	56 6.4%	875
Sunset Lane Elem	- 0.0%	442 59.1%	2 0.3%	32 4.3%	79 10.6%	17 2.3%	141 18.9%	35 4.7%	748
Valencia Park Elem	- 0.0%	16 2.3%	1 0.1%	12 1.7%	582 83.7%	7 1.0%	58 8.3%	19 2.7%	695
Woodcrest Elem	2 0.4%	14 3.0%	2 0.4%	5 1.1%	380 80.9%	14 3.0%	38 8.1%	15 3.2%	470
Ladera Vista Jr High	4 0.4%	91 9.4%	2 0.2%	8 0.8%	446 45.9%	8 0.8%	377 38.8%	36 3.7%	972
Nicolas Jr High	3 0.3%	31 3.3%	7 0.8%	10 1.1%	706 75.7%	21 2.3%	125 13.4%	30 3.2%	933
Parks Jr High	1 0.1%	453 44.6%	3 0.3%	22 2.2%	221 21.8%	19 1.9%	265 26.1%	31 3.1%	1,015
NPS Students	- 0.0%	- 0.0%	- 0.0%	- 0.0%	7 53.8%	- 0.0%	6 46.2%	- 0.0%	13
FULLERTON TOTALS	37 0.3%	2,647 19.7%	48 0.4%	237 1.8%	6,115 45.4%	201 1.5%	3,273 24.3%	900 6.7%	13,458
HUNTINGTON BEACH CITY									
Eader Elem	1 0.2%	27 4.7%	4 0.7%	3 0.5%	28 4.8%	11 1.9%	440 76.1%	64 11.1%	578
Hawes Elem	8 1.3%	38 6.4%	1 0.2%	3 0.5%	26 4.4%	3 0.5%	452 76.0%	64 10.8%	595
Huntington Seacliff Elem	5 0.8%	113 17.1%	2 0.3%	3 0.5%	16 2.4%	1 0.2%	421 63.9%	98 14.9%	659
Moffett Elem	2 0.4%	29 5.6%	1 0.2%	2 0.4%	20 3.8%	3 0.6%	388 74.6%	75 14.4%	520
Perry Elem	3 0.7%	33 8.0%	4 1.0%	2 0.5%	129 31.3%	1 0.2%	197 47.8%	43 10.4%	412
Peterson Elem	4 0.6%	48 7.3%	4 0.6%	2 0.3%	100 15.1%	6 0.9%	391 59.2%	106 16.0%	661
Smith Elem	6 0.7%	54 6.4%	2 0.2%	3 0.4%	65 7.8%	4 0.5%	581 69.3%	123 14.7%	838
Dwyer Middle	8 0.7%	96 8.2%	3 0.3%	9 0.8%	199 17.0%	8 0.7%	716 61.2%	131 11.2%	1,170
Sowers Middle	9 0.7%	88 7.1%	11 0.9%	8 0.6%	81 6.5%	8 0.6%	898 72.4%	138 11.1%	1,241
NPS Students	- 0.0%	- 0.0%	- 0.0%	- 0.0%	- 0.0%	- 0.0%	5 0.0%	- 0.0%	5
HUNT BCH CITY TOTALS	46 0.7%	526 7.9%	32 0.5%	35 0.5%	664 9.9%	45 0.7%	4,489 67.2%	842 12.6%	6,679

ORANGE COUNTY DEPARTMENT OF EDUCATION

PUPIL MEMBERSHIP COUNT AND PERCENTAGE

SCHOOL DISTRICT School Name	AMER IND ALASK NAT	ASIAN	PACIFIC ISLANDER	FILIPINO	HISPANIC	NOT OF HISPANIC ORIGIN		MULTIPLE NO RESP	TOTALS
						AFR AMER	WHITE		
LA HABRA CITY									
Arbolita Elem	-	6	-	1	334	3	20	35	399
	0.0%	1.5%	0.0%	0.3%	83.7%	0.8%	5.0%	8.8%	
El Cerrito Elem	1	6	-	2	362	7	24	44	446
	0.2%	1.3%	0.0%	0.4%	81.2%	1.6%	5.4%	9.9%	
Ladera Palma Elem	2	7	2	2	342	1	74	54	484
	0.4%	1.4%	0.4%	0.4%	70.7%	0.2%	15.3%	11.2%	
Las Lomas Elem	1	9	1	4	317	4	41	108	485
	0.2%	1.9%	0.2%	0.8%	65.4%	0.8%	8.5%	22.3%	
Las Positas Elem	1	12	-	7	429	6	74	62	591
	0.2%	2.0%	0.0%	1.2%	72.6%	1.0%	12.5%	10.5%	
Sierra Vista Elem	1	5	2	6	502	5	147	49	717
	0.1%	0.7%	0.3%	0.8%	70.0%	0.7%	20.5%	6.8%	
Walnut Elem	1	6	2	3	507	4	50	25	598
	0.2%	1.0%	0.3%	0.5%	84.8%	0.7%	8.4%	4.2%	
Imperial Middle	2	18	2	18	748	12	135	21	956
	0.2%	1.9%	0.2%	1.9%	78.2%	1.3%	14.1%	2.2%	
Washington Middle	-	20	1	3	730	3	158	34	949
	0.0%	2.1%	0.1%	0.3%	76.9%	0.3%	16.6%	3.6%	
NPS Students	-	-	-	-	3	-	4	1	8
	0.0%	0.0%	0.0%	0.0%	37.5%	0.0%	50.0%	12.5%	
LA HABRA CITY TOTALS	9	89	10	46	4,274	45	727	433	5,633
	0.2%	1.6%	0.2%	0.8%	75.9%	0.8%	12.9%	7.7%	
MAGNOLIA									
Baden-Powell Elem	-	40	9	25	459	25	81	34	673
	0.0%	5.9%	1.3%	3.7%	68.2%	3.7%	12.0%	5.1%	
Disney Elem	2	109	10	18	339	15	124	41	658
	0.3%	16.6%	1.5%	2.7%	51.5%	2.3%	18.8%	6.2%	
Low Elem	1	123	7	20	367	44	79	44	685
	0.1%	18.0%	1.0%	2.9%	53.6%	6.4%	11.5%	6.4%	
Marshall Elem	1	53	8	32	346	24	131	29	624
	0.2%	8.5%	1.3%	5.1%	55.4%	3.8%	21.0%	4.6%	
Maxwell Elem	2	82	11	19	532	38	76	21	781
	0.3%	10.5%	1.4%	2.4%	68.1%	4.9%	9.7%	2.7%	
Pyles Elem	-	96	1	5	652	12	23	19	808
	0.0%	11.9%	0.1%	0.6%	80.7%	1.5%	2.8%	2.4%	
Salk Elem	4	88	6	21	610	6	55	35	825
	0.5%	10.7%	0.7%	2.5%	73.9%	0.7%	6.7%	4.2%	
Schweitzer Elem	-	55	11	18	450	32	77	37	680
	0.0%	8.1%	1.6%	2.6%	66.2%	4.7%	11.3%	5.4%	
Walter Elem	-	32	11	6	504	2	11	13	579
	0.0%	5.5%	1.9%	1.0%	87.0%	0.3%	1.9%	2.2%	
NPS Students	-	-	-	-	1	-	3	-	4
	0.0%	0.0%	0.0%	0.0%	25.0%	0.0%	75.0%	0.0%	
MAGNOLIA TOTALS	10	678	74	164	4,260	198	660	273	6,317
	0.2%	10.7%	1.2%	2.6%	67.4%	3.1%	10.4%	4.3%	
OCEAN VIEW									
Circle View Elem	2	82	-	13	56	4	444	128	729
	0.3%	11.2%	0.0%	1.8%	7.7%	0.5%	60.9%	17.6%	
College View Elem	2	16	8	4	149	2	187	73	441
	0.5%	3.6%	1.8%	0.9%	33.8%	0.5%	42.4%	16.6%	
Golden View Elem	1	42	1	6	113	6	289	72	530
	0.2%	7.9%	0.2%	1.1%	21.3%	1.1%	54.5%	13.6%	
Harbour View Elem	3	76	1	12	123	3	466	90	774
	0.4%	9.8%	0.1%	1.6%	15.9%	0.4%	60.2%	11.6%	

ORANGE COUNTY DEPARTMENT OF EDUCATION

PUPIL MEMBERSHIP COUNT AND PERCENTAGE

SCHOOL DISTRICT School Name	AMER IND ALASK NAT	ASIAN	PACIFIC ISLANDER	FILIPINO	HISPANIC	NOT OF HISPANIC ORIGIN		MULTIPLE NO RESP	TOTALS
						AFR AMER	WHITE		
Hope View Elem	1 0.2%	46 6.9%	- 0.0%	5 0.8%	46 6.9%	11 1.7%	444 66.8%	112 16.8%	665
Lake View Elem	- 0.0%	44 11.5%	2 0.5%	5 1.3%	154 40.2%	4 1.0%	122 31.9%	52 13.6%	383
Oak View Elem	- 0.0%	2 0.2%	- 0.0%	- 0.0%	817 98.6%	2 0.2%	2 0.2%	6 0.7%	829
Star View Elem	1 0.2%	276 49.4%	6 1.1%	5 0.9%	76 13.6%	4 0.7%	166 29.7%	25 4.5%	559
Sun View Elem	4 1.2%	39 11.5%	4 1.2%	7 2.1%	132 38.8%	2 0.6%	97 28.5%	55 16.2%	340
Village View Elem	3 0.5%	41 6.8%	- 0.0%	10 1.7%	51 8.5%	13 2.2%	374 62.1%	110 18.3%	602
Westmont Elem	3 0.7%	49 12.0%	5 1.2%	2 0.5%	207 50.6%	6 1.5%	113 27.6%	24 5.9%	409
Marine View Middle	9 1.0%	57 6.5%	1 0.1%	7 0.8%	204 23.4%	4 0.5%	519 59.5%	72 8.2%	873
Mesa View Middle	3 0.4%	66 8.9%	- 0.0%	5 0.7%	167 22.4%	10 1.3%	406 54.6%	87 11.7%	744
Spring View Middle	6 0.7%	70 8.3%	12 1.4%	6 0.7%	196 23.3%	13 1.5%	458 54.5%	79 9.4%	840
Vista View Middle	2 0.3%	192 24.5%	3 0.4%	9 1.1%	331 42.2%	7 0.9%	188 23.9%	53 6.8%	785
NPS Students	- 0.0%	- 0.0%	- 0.0%	- 0.0%	- 0.0%	- 0.0%	- 0.0%	- 0.0%	-
OCEAN VIEW TOTALS	40 0.4%	1,098 11.6%	43 0.5%	96 1.0%	2,822 29.7%	91 1.0%	4,275 45.0%	1,038 10.9%	9,503
<u>SAVANNA</u>									
Cerritos Elem	3 0.6%	69 14.7%	7 1.5%	26 5.5%	157 33.4%	28 6.0%	152 32.3%	28 6.0%	470
Hansen Elem	2 0.3%	76 10.4%	9 1.2%	30 4.1%	485 66.3%	22 3.0%	92 12.6%	16 2.2%	732
Holder Elem	7 1.3%	52 9.8%	13 2.5%	34 6.4%	287 54.3%	42 7.9%	81 15.3%	13 2.5%	529
Reid Elem	1 0.1%	125 17.0%	8 1.1%	45 6.1%	401 54.4%	29 3.9%	106 14.4%	22 3.0%	737
NPS Students	- 0.0%	- 0.0%	1 20.0%	- 0.0%	3 60.0%	- 0.0%	1 20.0%	- 0.0%	5
SAVANNA TOTALS	13 0.5%	322 13.0%	38 1.5%	135 5.5%	1,333 53.9%	121 4.9%	432 17.5%	79 3.2%	2,473
<u>WESTMINSTER</u>									
Anderson Elem	- 0.0%	429 59.9%	2 0.3%	3 0.4%	241 33.7%	10 1.4%	24 3.4%	7 1.0%	716
Clegg Elem	15 1.1%	333 24.6%	8 0.6%	11 0.8%	416 30.7%	17 1.3%	417 30.8%	139 10.3%	1,356
DeMille Elem	- 0.0%	315 54.6%	2 0.3%	2 0.3%	206 35.7%	1 0.2%	43 7.5%	8 1.4%	577
Eastwood Elem	8 1.6%	105 20.6%	3 0.6%	4 0.8%	46 9.0%	1 0.2%	239 46.9%	104 20.4%	510
Finley Elem	- 0.0%	71 16.6%	6 1.4%	3 0.7%	308 71.8%	3 0.7%	23 5.4%	15 3.5%	429
Fryberger Elem	- 0.0%	174 32.8%	2 0.4%	5 0.9%	232 43.8%	4 0.8%	64 12.1%	49 9.2%	530
Hayden Elem	1 0.1%	491 61.9%	- 0.0%	2 0.3%	219 27.6%	4 0.5%	23 2.9%	53 6.7%	793
Mearns Elem	1 0.2%	324 49.2%	5 0.8%	3 0.5%	267 40.6%	4 0.6%	25 3.8%	29 4.4%	658

ORANGE COUNTY DEPARTMENT OF EDUCATION

PUPIL MEMBERSHIP COUNT AND PERCENTAGE

SCHOOL DISTRICT School Name	AMER IND ALASK NAT	ASIAN	PACIFIC ISLANDER	FILIPINO	HISPANIC	NOT OF HISPANIC ORIGIN		MULTIPLE NO RESP	TOTALS
						AFR AMER	WHITE		
Schmitt Elem	-	152	5	1	280	3	25	17	483
Schroeder Elem	3	112	6	11	105	1	279	60	577
Sequoia Elem	-	105	6	9	124	5	126	68	443
Webber Elem	-	211	1	1	195	7	35	10	460
Willmore Elem	2	200	3	4	290	5	23	13	540
Johnson Middle	1	245	7	8	430	12	90	25	818
Warner Middle	1	556	6	2	336	5	46	32	984
NPS Students	-	-	-	-	1	1	2	1	5
WESTMINSTER TOTALS	32	3,823	62	69	3,696	83	1,484	630	9,879
ELEMENTARY DISTRICTS TOTALS	328	14,579	568	2,044	46,585	1,807	22,128	5,735	93,774
ANAHEIM UNION HIGH									
Ball Jr High	3	81	9	27	1,018	35	127	44	1,344
Brookhurst Jr High	4	83	15	46	887	46	140	64	1,285
Dale Jr High	-	103	32	38	1,018	41	138	9	1,379
Lexington Jr High	5	306	8	43	181	37	391	137	1,108
Orangeview Jr High	6	96	26	50	650	42	154	51	1,075
South Jr High	1	34	5	11	1,266	20	105	46	1,488
Sycamore Jr High	6	27	4	17	1,582	12	36	21	1,705
Walker Jr High	6	270	7	100	355	63	326	144	1,271
Anaheim HS	9	25	13	25	2,987	38	92	71	3,260
Cypress HS	2	611	65	88	322	86	934	378	2,486
Katella HS	6	89	21	34	2,206	44	294	54	2,748
Kennedy HS	5	541	33	190	496	93	635	365	2,358
Loara HS	5	191	39	71	1,860	59	391	145	2,761

ORANGE COUNTY DEPARTMENT OF EDUCATION

PUPIL MEMBERSHIP COUNT AND PERCENTAGE

SCHOOL DISTRICT School Name	AMER IND ALASK NAT	ASIAN	PACIFIC ISLANDER	FILIPINO	HISPANIC	NOT OF HISPANIC ORIGIN		MULTIPLE NO RESP	TOTALS
						AFR AMER	WHITE		
Magnolia HS	3 0.1%	198 8.9%	62 2.8%	73 3.3%	1,555 70.0%	68 3.1%	231 10.4%	32 1.4%	2,222
Oxford HS	1 0.1%	644 57.3%	14 1.2%	95 8.5%	135 12.0%	14 1.2%	145 12.9%	75 6.7%	1,123
Savanna HS	4 0.2%	203 8.5%	30 1.3%	103 4.3%	1,409 59.3%	89 3.7%	339 14.3%	201 8.5%	2,378
Western HS	6 0.3%	215 9.0%	61 2.6%	138 5.8%	1,225 51.5%	124 5.2%	402 16.9%	208 8.7%	2,379
Hope Spec Ed Center	- 0.0%	22 8.1%	7 2.6%	13 4.8%	130 47.6%	12 4.4%	70 25.6%	19 7.0%	273
Polaris HS (Alt)	1 0.6%	5 2.8%	- 0.0%	2 1.1%	75 41.7%	7 3.9%	75 41.7%	15 8.3%	180
Polaris Opp Day	- 0.0%	- 0.0%	- 0.0%	- 0.0%	- 0.0%	- 0.0%	1 100.0%	- 0.0%	1
Gilbert HS (Cont)	5 0.7%	19 2.5%	8 1.0%	5 0.7%	525 68.4%	26 3.4%	132 17.2%	47 6.1%	767
Anaheim Comm Day	- 0.0%	2 2.2%	4 4.5%	- 0.0%	66 74.2%	4 4.5%	10 11.2%	3 3.4%	89
NPS Students	- 0.0%	- 0.0%	- 0.0%	- 0.0%	4 13.3%	6 20.0%	19 63.3%	1 3.3%	30
ANAHEIM UNION HIGH TOTALS	78 0.2%	3,765 11.2%	463 1.4%	1,169 3.5%	19,952 59.2%	966 2.9%	5,187 15.4%	2,130 6.3%	33,710
FULLERTON JOINT UNION HIGH									
Buena Park HS	3 0.2%	151 7.7%	10 0.5%	79 4.0%	1,321 67.1%	109 5.5%	217 11.0%	80 4.1%	1,970
Fullerton HS	9 0.4%	90 4.4%	8 0.4%	23 1.1%	1,090 52.8%	52 2.5%	690 33.4%	103 5.0%	2,065
La Habra HS	6 0.3%	49 2.2%	11 0.5%	26 1.1%	1,310 57.8%	27 1.2%	736 32.5%	101 4.5%	2,266
Sonora HS	1 0.0%	194 9.1%	1 0.0%	33 1.6%	1,157 54.4%	36 1.7%	590 27.8%	114 5.4%	2,126
Sunny Hills HS	4 0.2%	1,313 49.9%	5 0.2%	143 5.4%	543 20.6%	41 1.6%	561 21.3%	21 0.8%	2,631
Troy HS	4 0.2%	1,076 40.8%	6 0.2%	122 4.6%	449 17.0%	35 1.3%	679 25.7%	269 10.2%	2,640
La Vista HS (Cont)	- 0.0%	9 2.4%	2 0.5%	2 0.5%	275 73.9%	10 2.7%	58 15.6%	16 4.3%	372
NPS Students	- 0.0%	1 2.6%	- 0.0%	1 2.6%	11 28.2%	1 2.6%	20 51.3%	5 12.8%	39
FULLERTON JT UN HI TOTALS	27 0.2%	2,883 20.4%	43 0.3%	429 3.0%	6,156 43.6%	311 2.2%	3,551 25.2%	709 5.0%	14,109
La Sierra HS (Alt)	2 0.1%	158 7.1%	4 0.2%	6 0.3%	1,789 80.1%	25 1.1%	212 9.5%	38 1.7%	2,234
FULLERTON JT UN HI TOTALS INCLUDING LA SIERRA HS	29 0.2%	3,041 18.6%	47 0.3%	435 2.7%	7,945 48.6%	336 2.1%	3,763 23.0%	747 4.6%	16,343
HUNTINGTON BEACH UNION HIGH									
Edison HS	251 9.6%	295 11.3%	32 1.2%	39 1.5%	272 10.4%	28 1.1%	1,687 64.6%	7 0.3%	2,611
Fountain Valley HS	186 5.7%	1,206 37.2%	32 1.0%	48 1.5%	384 11.8%	41 1.3%	1,339 41.3%	9 0.3%	3,245
Huntington Beach HS	201 7.8%	232 9.0%	24 0.9%	26 1.0%	392 15.2%	28 1.1%	1,664 64.6%	10 0.4%	2,577
Marina HS	207 7.3%	493 17.4%	36 1.3%	46 1.6%	401 14.2%	29 1.0%	1,601 56.7%	13 0.5%	2,826
Ocean View HS	97 6.3%	232 15.0%	15 1.0%	31 2.0%	691 44.6%	40 2.6%	439 28.3%	4 0.3%	1,549

ORANGE COUNTY DEPARTMENT OF EDUCATION

PUPIL MEMBERSHIP COUNT AND PERCENTAGE

SCHOOL DISTRICT School Name	AMER IND ALASK NAT	ASIAN	PACIFIC ISLANDER	FILIPINO	HISPANIC	NOT OF HISPANIC ORIGIN		MULTIPLE NO RESP	TOTALS
						AFR AMER	WHITE		
Westminster HS	89 3.3%	1,136 41.6%	19 0.7%	20 0.7%	1,193 43.7%	29 1.1%	237 8.7%	10 0.4%	2,733
Coast HS (Alt)	32 15.2%	6 2.8%	1 0.5%	- 0.0%	33 15.6%	4 1.9%	135 64.0%	- 0.0%	211
Valley Vista HS (Cont)	22 7.3%	23 7.6%	5 1.7%	4 1.3%	114 37.9%	3 1.0%	130 43.2%	- 0.0%	301
HB Comm Day (Alt)	7 15.9%	- 0.0%	1 2.3%	- 0.0%	18 40.9%	1 2.3%	16 36.4%	1 2.3%	44
NPS Students	- 0.0%	2 7.1%	- 0.0%	- 0.0%	6 21.4%	- 0.0%	20 71.4%	- 0.0%	28
HUNT BCH UNION HIGH TOTALS	1,092 6.8%	3,625 22.5%	165 1.0%	214 1.3%	3,504 21.7%	203 1.3%	7,268 45.1%	54 0.3%	16,125
HIGH SCHOOL DISTRICTS TOTALS	1,199 1.8%	10,431 15.8%	675 1.0%	1,818 2.7%	31,401 47.4%	1,505 2.3%	16,218 24.5%	2,931 4.4%	66,178
<u>BREA-OLINDA UNIFIED</u>									
Arovista Elem	4 0.7%	24 4.5%	7 1.3%	4 0.7%	217 40.3%	16 3.0%	266 49.4%	- 0.0%	538
Brea Country Hills Elem	- 0.0%	147 25.6%	- 0.0%	19 3.3%	90 15.7%	8 1.4%	249 43.3%	62 10.8%	575
Fanning Elem	2 0.4%	96 20.3%	3 0.6%	9 1.9%	82 17.4%	7 1.5%	197 41.7%	76 16.1%	472
Laurel Elem	- 0.0%	24 5.6%	1 0.2%	7 1.6%	234 55.1%	7 1.6%	107 25.2%	45 10.6%	425
Mariposa Elem	- 0.0%	74 15.0%	3 0.6%	18 3.6%	100 20.2%	8 1.6%	219 44.3%	72 14.6%	494
Olinda Elem	- 0.0%	117 34.9%	- 0.0%	11 3.3%	61 18.2%	7 2.1%	134 40.0%	5 1.5%	335
Brea Jr High	5 0.5%	194 20.1%	2 0.2%	18 1.9%	245 25.4%	15 1.6%	445 46.2%	39 4.0%	963
Brea-Olinda HS	5 0.2%	364 17.7%	4 0.2%	47 2.3%	459 22.3%	39 1.9%	1,076 52.3%	62 3.0%	2,056
Brea Canyon HS (Cont)	- 0.0%	2 2.6%	- 0.0%	1 1.3%	40 51.3%	3 3.8%	29 37.2%	3 3.8%	78
NPS Students	- 0.0%	- 0.0%	- 0.0%	- 0.0%	1 10.0%	- 0.0%	8 80.0%	1 10.0%	10
* ADULTS (included in various High Schools)	0	0	0	0	1	0	1	0	2
BREA-OLINDA UNIFIED TOTALS	16 0.3%	1,042 17.5%	20 0.3%	134 2.3%	1,529 25.7%	110 1.8%	2,730 45.9%	365 6.1%	5,946
<u>CAPISTRANO UNIFIED</u>									
Ambuehl Elem	4 0.7%	11 2.0%	- 0.0%	3 0.5%	126 22.9%	3 0.5%	332 60.3%	72 13.1%	551
Arroyo Vista Elem	2 0.3%	36 5.5%	1 0.2%	10 1.5%	74 11.2%	11 1.7%	434 66.0%	90 13.7%	658
Avila Elem	- 0.0%	96 12.5%	- 0.0%	16 2.1%	56 7.3%	6 0.8%	479 62.1%	118 15.3%	771
Barcelona Hills Elem	- 0.0%	16 3.3%	1 0.2%	3 0.6%	59 12.2%	3 0.6%	308 63.9%	92 19.1%	482
Bathgate Elem	- 0.0%	65 9.8%	2 0.3%	5 0.8%	26 3.9%	6 0.9%	481 72.8%	76 11.5%	661
Benedict Elem	1 0.1%	20 2.5%	- 0.0%	5 0.6%	26 3.2%	2 0.2%	650 80.5%	103 12.8%	807
Bergeson Elem	1 0.2%	37 6.4%	1 0.2%	21 3.6%	73 12.7%	5 0.9%	418 72.6%	20 3.5%	576
Canyon Vista Elem	2 0.3%	81 10.9%	- 0.0%	15 2.0%	42 5.6%	8 1.1%	476 64.0%	120 16.1%	744
Castille Elem	- 0.0%	23 3.8%	- 0.0%	7 1.1%	58 9.5%	3 0.5%	442 72.3%	78 12.8%	611

ORANGE COUNTY DEPARTMENT OF EDUCATION

PUPIL MEMBERSHIP COUNT AND PERCENTAGE

SCHOOL DISTRICT School Name	AMER IND ALASK NAT	ASIAN	PACIFIC ISLANDER	FILIPINO	HISPANIC	NOT OF HISPANIC ORIGIN		MULTIPLE NO RESP	TOTALS
						AFR AMER	WHITE		
Chaparral Elem	-	56	-	29	44	13	674	107	923
	0.0%	6.1%	0.0%	3.1%	4.8%	1.4%	73.0%	11.6%	
Concordia Elem	4	9	3	1	102	3	457	49	628
	0.6%	1.4%	0.5%	0.2%	16.2%	0.5%	72.8%	7.8%	
Crown Valley Elem	5	16	2	6	67	5	298	19	418
	1.2%	3.8%	0.5%	1.4%	16.0%	1.2%	71.3%	4.5%	
Dana Elem	1	2	1	-	254	-	95	33	386
	0.3%	0.5%	0.3%	0.0%	65.8%	0.0%	24.6%	8.5%	
Del Obispo Elem	1	2	2	5	173	3	254	66	506
	0.2%	0.4%	0.4%	1.0%	34.2%	0.6%	50.2%	13.0%	
Hankey Elem	1	16	3	22	119	4	207	41	413
	0.2%	3.9%	0.7%	5.3%	28.8%	1.0%	50.1%	9.9%	
Hidden Hills Elem	1	11	1	13	185	4	264	46	525
	0.2%	2.1%	0.2%	2.5%	35.2%	0.8%	50.3%	8.8%	
Kinoshita Elem	-	-	-	2	606	1	11	5	625
	0.0%	0.0%	0.0%	0.3%	97.0%	0.2%	1.8%	0.8%	
Ladera Ranch Elem	1	64	2	11	84	16	576	106	860
	0.1%	7.4%	0.2%	1.3%	9.8%	1.9%	67.0%	12.3%	
Laguna Niguel Elem	2	67	1	8	78	3	416	53	628
	0.3%	10.7%	0.2%	1.3%	12.4%	0.5%	66.2%	8.4%	
Las Flores Elem	-	47	-	22	49	9	424	79	630
	0.0%	7.5%	0.0%	3.5%	7.8%	1.4%	67.3%	12.5%	
Las Palmas Elem	-	3	-	-	363	1	186	120	673
	0.0%	0.4%	0.0%	0.0%	53.9%	0.1%	27.6%	17.8%	
Lobo Elem	2	13	-	4	93	4	326	59	501
	0.4%	2.6%	0.0%	0.8%	18.6%	0.8%	65.1%	11.8%	
Malcolm Elem	2	22	-	4	28	2	557	60	675
	0.3%	3.3%	0.0%	0.6%	4.1%	0.3%	82.5%	8.9%	
Marblehead Elem	1	10	-	3	166	2	386	47	615
	0.2%	1.6%	0.0%	0.5%	27.0%	0.3%	62.8%	7.6%	
Moulton Elem	1	38	1	10	66	9	517	73	715
	0.1%	5.3%	0.1%	1.4%	9.2%	1.3%	72.3%	10.2%	
Oak Grove Elem	4	96	2	15	87	16	425	142	787
	0.5%	12.2%	0.3%	1.9%	11.1%	2.0%	54.0%	18.0%	
Oso Grande	1	60	-	16	47	6	651	90	871
	0.1%	6.9%	0.0%	1.8%	5.4%	0.7%	74.7%	10.3%	
Palisades Elem	5	4	-	3	110	5	330	75	532
	0.9%	0.8%	0.0%	0.6%	20.7%	0.9%	62.0%	14.1%	
Reilly Elem	1	36	-	3	24	2	389	67	522
	0.2%	6.9%	0.0%	0.6%	4.6%	0.4%	74.5%	12.8%	
San Juan Elem	-	9	1	6	513	7	94	21	651
	0.0%	1.4%	0.2%	0.9%	78.8%	1.1%	14.4%	3.2%	
Tijeras Creek Elem	-	15	4	11	35	10	468	64	607
	0.0%	2.5%	0.7%	1.8%	5.8%	1.6%	77.1%	10.5%	
Viejo Elem	-	4	-	11	330	9	153	31	538
	0.0%	0.7%	0.0%	2.0%	61.3%	1.7%	28.4%	5.8%	
Vista Del Mar Elem	-	36	5	1	90	1	787	99	1,019
	0.0%	3.5%	0.5%	0.1%	8.8%	0.1%	77.2%	9.7%	
Wagon Wheel Elem	1	42	2	8	23	8	694	82	860
	0.1%	4.9%	0.2%	0.9%	2.7%	0.9%	80.7%	9.5%	

ORANGE COUNTY DEPARTMENT OF EDUCATION

PUPIL MEMBERSHIP COUNT AND PERCENTAGE

SCHOOL DISTRICT School Name	AMER IND ALASK NAT	ASIAN	PACIFIC ISLANDER	FILIPINO	HISPANIC	NOT OF HISPANIC ORIGIN		MULTIPLE NO RESP	TOTALS
						AFR AMER	WHITE		
White Elem	3 0.4%	36 5.2%	- 0.0%	6 0.9%	89 12.8%	3 0.4%	491 70.9%	65 2.0%	693
Wood Canyon Elem	2 0.3%	44 7.2%	3 0.5%	21 3.4%	127 20.8%	29 4.7%	319 52.1%	67 10.9%	612
Aliso Viejo Middle	4 0.4%	114 10.7%	4 0.4%	24 2.3%	156 14.7%	17 1.6%	684 64.3%	61 5.7%	1,064
Arroyo Vista Middle	- 0.0%	31 8.0%	1 0.3%	5 1.3%	43 11.1%	7 1.8%	273 70.7%	26 6.7%	386
Avila Middle	- 0.0%	140 11.5%	5 0.4%	33 2.7%	134 11.0%	32 2.6%	792 64.8%	86 7.0%	1,222
Ayer Middle	2 0.3%	11 1.4%	2 0.3%	12 1.6%	158 20.5%	5 0.6%	521 67.6%	60 7.8%	771
Forster Middle	1 0.1%	9 0.6%	2 0.1%	5 0.4%	825 58.1%	7 0.5%	521 36.7%	49 3.5%	1,419
Hankey Middle	2 0.7%	5 1.8%	- 0.0%	10 3.6%	74 26.6%	2 0.7%	167 60.1%	18 6.5%	278
Ladera Ranch Middle	2 0.2%	57 5.8%	3 0.3%	26 2.7%	100 10.2%	22 2.2%	703 71.7%	68 6.9%	981
Las Flores Middle	3 0.2%	68 5.3%	1 0.1%	34 2.6%	70 5.4%	14 1.1%	1,037 80.3%	65 5.0%	1,292
Newhart Middle	4 0.2%	104 6.4%	7 0.4%	18 1.1%	268 16.6%	24 1.5%	1,115 68.9%	78 4.8%	1,618
Niguel Hills Middle	2 0.1%	68 4.7%	2 0.1%	27 1.9%	202 14.0%	18 1.2%	1,061 73.6%	61 4.2%	1,441
Shorecliffs Middle	7 0.7%	19 1.9%	4 0.4%	4 0.4%	228 22.4%	5 0.5%	676 66.5%	73 7.2%	1,016
Vista Del Mar Middle	3 0.6%	15 3.0%	2 0.4%	6 1.2%	79 15.8%	2 0.4%	364 72.7%	30 6.0%	501
Aliso Niguel HS	14 0.4%	383 12.2%	6 0.2%	89 2.8%	347 11.1%	76 2.4%	2,070 66.0%	150 4.8%	3,135
Capistrano Valley HS	12 0.4%	181 6.2%	8 0.3%	53 1.8%	741 25.4%	28 1.0%	1,831 62.7%	68 2.3%	2,922
Dana Hills HS	9 0.3%	115 3.9%	6 0.2%	33 1.1%	539 18.2%	29 1.0%	2,122 71.5%	116 3.9%	2,969
San Clemente HS	19 0.6%	63 1.9%	6 0.2%	23 0.7%	616 19.0%	52 1.6%	2,347 72.5%	113 3.5%	3,239
San Juan Hills HS	7 0.6%	21 1.9%	1 0.1%	12 1.1%	377 34.8%	14 1.3%	596 55.1%	54 5.0%	1,082
Tesoro HS	9 0.3%	178 6.5%	14 0.5%	68 2.5%	210 7.6%	45 1.6%	2,138 77.8%	87 3.2%	2,749
Serra HS (Cont)	- 0.0%	- 0.0%	- 0.0%	1 0.6%	91 56.2%	4 2.5%	61 37.7%	5 3.1%	162
Bridges Comm Day	- 0.0%	- 0.0%	- 0.0%	- 0.0%	7 70.0%	- 0.0%	3 30.0%	- 0.0%	10
Dana Except Needs	- 0.0%	- 0.0%	- 0.0%	- 0.0%	12 21.8%	2 3.6%	32 58.2%	9 16.4%	55
Opp. For Learning (Charter School)	- 0.0%	1 1.0%	- 0.0%	- 0.0%	15 15.2%	2 2.0%	80 80.8%	1 1.0%	99
Journey (Charter School)	- 0.0%	9 4.1%	1 0.5%	3 1.4%	7 3.2%	- 0.0%	154 71.0%	43 19.8%	217
Capistrano Connections (Charter School)	3 0.4%	20 2.6%	2 0.3%	10 1.3%	80 10.5%	82 10.8%	357 46.9%	208 27.3%	762
Capo Home Outreach	- 0.0%	- 0.0%	- 0.0%	- 0.0%	3 4.1%	- 0.0%	57 77.0%	14 18.9%	74
NPS Students	- 0.0%	1 2.9%	- 0.0%	- 0.0%	3 8.6%	- 0.0%	30 85.7%	1 2.9%	35
* ADULTS (included in various High Schools)	1	6	0	2	16	1	66	1	93
CAPISTRANO UNIFIED TOTALS	152 0.3%	2,756 5.2%	115 0.2%	822 1.6%	9,877 18.7%	711 1.3%	34,261 64.9%	4,079 7.7%	52,773

ORANGE COUNTY DEPARTMENT OF EDUCATION

PUPIL MEMBERSHIP COUNT AND PERCENTAGE

SCHOOL DISTRICT School Name	AMER IND ALASK NAT	ASIAN	PACIFIC ISLANDER	FILIPINO	HISPANIC	NOT OF HISPANIC ORIGIN		MULTIPLE NO RESP	TOTALS
						AFR AMER	WHITE		
GARDEN GROVE UNIFIED									
Allen Elem	2 0.3%	484 75.3%	1 0.2%	5 0.8%	79 12.3%	1 0.2%	71 11.0%	- 0.0%	643
Anthony Elem	1 0.2%	318 63.7%	3 0.6%	2 0.4%	142 28.5%	7 1.4%	26 5.2%	- 0.0%	499
Barker Elem	- 0.0%	26 8.1%	- 0.0%	8 2.5%	52 16.1%	5 1.6%	231 71.7%	- 0.0%	322
Brookhurst Elem	- 0.0%	194 34.7%	3 0.5%	2 0.4%	277 49.6%	17 3.0%	66 11.8%	- 0.0%	559
Bryant Elem	- 0.0%	49 8%	1 0%	1 0%	485 83%	10 2%	40 7%	1 0%	587
Carrillo Elem	3 0.4%	290 43.5%	7 1.0%	5 0.7%	343 51.4%	1 0.1%	17 2.5%	1 0.1%	667
Carver Elem	2 0.7%	54 18.7%	2 0.7%	9 3.1%	201 69.6%	1 0.3%	16 5.5%	4 1.4%	289
Clinton-Mendenhall Elem	- 0.0%	89 13.0%	3 0.4%	7 1.0%	562 82.2%	2 0.3%	21 3.1%	- 0.0%	684
Cook Elem	- 0.0%	266 64.6%	8 1.9%	2 0.5%	115 27.9%	1 0.2%	20 4.9%	- 0.0%	412
Crosby Elem	1 0.2%	102 19.8%	9 1.7%	5 1.0%	322 62.4%	7 1.4%	70 13.6%	- 0.0%	516
Eisenhower Elem	- 0.0%	83 14.2%	1 0.2%	3 0.5%	487 83.1%	2 0.3%	10 1.7%	- 0.0%	586
Enders Elem	7 1.2%	54 9.5%	4 0.7%	22 3.9%	147 25.8%	17 3.0%	318 55.8%	1 0.2%	570
Evans Elem	4 0.7%	153 27.2%	8 1.4%	4 0.7%	339 60.3%	6 1.1%	48 8.5%	- 0.0%	562
Excelsior Elem	- 0.0%	331 62.2%	9 1.7%	8 1.5%	150 28.2%	3 0.6%	30 5.6%	1 0.2%	532
Faylane Elem	3 0.5%	167 27.5%	10 1.6%	14 2.3%	287 47.2%	13 2.1%	114 18.8%	- 0.0%	608
Garden Park Elem	2 0.7%	35 12.8%	5 1.8%	7 2.6%	59 21.5%	3 1.1%	163 59.5%	- 0.0%	274
Gilbert Elem	1 0.2%	159 25.9%	21 3.4%	12 2.0%	309 50.3%	5 0.8%	107 17.4%	- 0.0%	614
Hazard Elem	1 0.1%	82 12.2%	3 0.4%	- 0.0%	574 85.4%	6 0.9%	5 0.7%	1 0.1%	672
Heritage Elem	- 0.0%	89 13.3%	- 0.0%	- 0.0%	573 85.4%	- 0.0%	8 1.2%	1 0.1%	671
Hill Elem	- 0.0%	261 60.7%	5 1.2%	5 1.2%	104 24.2%	- 0.0%	55 12.8%	- 0.0%	430
Lawrence Elem	4 0.6%	217 34.8%	3 0.5%	9 1.4%	327 52.5%	13 2.1%	50 8.0%	- 0.0%	623
Marshall Elem	1 0.2%	203 35.7%	2 0.4%	1 0.2%	333 58.6%	- 0.0%	28 4.9%	- 0.0%	568
Mitchell Elem	1 0.2%	210 37.6%	8 1.4%	7 1.3%	314 56.2%	2 0.4%	15 2.7%	2 0.4%	559
Monroe Elem	- 0.0%	202 57.7%	1 0.3%	2 0.6%	100 28.6%	6 1.7%	38 10.9%	1 0.3%	350
Morningside Elem	1 0.2%	345 63.5%	2 0.4%	4 0.7%	166 30.6%	4 0.7%	21 3.9%	- 0.0%	543
Murdy Elem	1 0.2%	334 80.9%	1 0.2%	2 0.5%	56 13.6%	- 0.0%	19 4.6%	- 0.0%	413
Newhope Elem	- 0.0%	116 18.9%	3 0.5%	6 1.0%	475 77.5%	2 0.3%	11 1.8%	- 0.0%	613

ORANGE COUNTY DEPARTMENT OF EDUCATION

PUPIL MEMBERSHIP COUNT AND PERCENTAGE

SCHOOL DISTRICT School Name	AMER IND ALASK NAT	ASIAN	PACIFIC ISLANDER	FILIPINO	HISPANIC	NOT OF HISPANIC ORIGIN		MULTIPLE NO RESP	TOTALS
						AFR AMER	WHITE		
Northcutt Elem	-	149	6	6	294	5	49	1	510
Paine Elem	1	258	10	-	198	1	49	-	517
Parkview Elem	-	89	3	11	359	8	73	-	543
Patton Elem	3	243	10	28	155	13	467	-	919
Peters Elem	2	301	6	22	787	10	46	1	1,175
Post Elem	1	336	6	2	176	1	11	1	534
Riverdale Elem	-	97	10	6	509	9	19	-	650
Rosita Elem	-	199	5	1	474	1	7	1	688
Russell Elem	-	32	-	1	616	1	3	-	653
Simmons Elem	2	45	4	15	361	3	13	3	446
Skylark Elem	-	54	-	4	414	1	15	1	489
Stanford Elem	4	329	7	9	217	7	69	2	644
Stanley Elem	-	122	3	7	181	9	78	2	402
Sunnyside Elem	2	305	7	6	208	7	26	2	563
Violette Elem	-	67	11	1	472	1	13	-	565
Wakeham Elem	1	64	5	3	302	7	15	-	397
Warren Elem	3	73	-	9	440	7	28	-	560
Woodbury Elem	-	110	13	1	410	2	11	-	547
Zeyen Elem	-	103	1	5	225	3	52	1	390
Alamitos Intermediate	-	248	10	17	538	14	85	3	915
Bell Intermediate	10	113	5	18	114	17	432	-	709
Doig Intermediate	1	109	5	6	805	3	22	2	953
Fitz Intermediate	2	167	1	10	663	3	38	-	884
Irvine Intermediate	-	360	8	9	484	4	31	1	897
Jordan Intermediate	1	391	14	9	288	11	42	-	756
Lake Intermediate	-	110	5	10	347	11	140	2	625

ORANGE COUNTY DEPARTMENT OF EDUCATION

PUPIL MEMBERSHIP COUNT AND PERCENTAGE

SCHOOL DISTRICT School Name	AMER IND ALASK NAT	ASIAN	PACIFIC ISLANDER	FILIPINO	HISPANIC	NOT OF HISPANIC ORIGIN		MULTIPLE NO RESP	TOTALS
						AFR AMER	WHITE		
McGarvin Intermediate	1 0.1%	563 74.8%	3 0.4%	4 0.5%	131 17.4%	2 0.3%	49 6.5%	- 0.0%	753
Ralston Intermediate	- 0.0%	200 31.3%	6 0.9%	10 1.6%	311 48.7%	10 1.6%	102 16.0%	- 0.0%	639
Walton Intermediate	- 0.0%	108 15.2%	6 0.8%	10 1.4%	532 74.9%	2 0.3%	50 7.0%	2 0.3%	710
Bolsa Grande HS	6 0.3%	994 51.5%	22 1.1%	18 0.9%	739 38.3%	14 0.7%	134 6.9%	3 0.2%	1,930
Garden Grove HS	8 0.3%	611 26.6%	36 1.6%	50 2.2%	1,149 50.0%	33 1.4%	412 17.9%	1 0.0%	2,300
La Quinta HS	2 0.1%	1,387 71.0%	9 0.5%	17 0.9%	367 18.8%	8 0.4%	162 8.3%	2 0.1%	1,954
Los Amigos HS	3 0.1%	430 19.2%	15 0.7%	20 0.9%	1,657 73.8%	12 0.5%	103 4.6%	4 0.2%	2,244
Pacifica HS	12 0.6%	336 17.3%	15 0.8%	42 2.2%	445 22.9%	20 1.0%	1,066 54.9%	6 0.3%	1,942
Rancho Alamitos HS	2 0.1%	531 27.1%	23 1.2%	48 2.4%	1,019 52.0%	32 1.6%	303 15.5%	2 0.1%	1,960
Santiago HS	2 0.1%	324 14.8%	9 0.4%	11 0.5%	1,745 79.6%	13 0.6%	87 4.0%	1 0.0%	2,192
Hare HS (Cont)	2 0.5%	50 11.3%	5 1.1%	- 0.0%	307 69.5%	9 2.0%	66 14.9%	3 0.7%	442
Lincoln HS (Cont)	- 0.0%	3 6.5%	- 0.0%	- 0.0%	41 89.1%	- 0.0%	2 4.3%	- 0.0%	46
Jordan Sec Learning Ctr	- 0.0%	19 33.3%	1 1.8%	- 0.0%	27 47.4%	1 1.8%	9 15.8%	- 0.0%	57
Twain Special Center	- 0.0%	19 26.0%	- 0.0%	1 1.4%	31 42.5%	2 2.7%	20 27.4%	- 0.0%	73
NPS Students	1 2.5%	3 7.5%	1 2.5%	1 2.5%	8 20.0%	1 2.5%	25 62.5%	- 0.0%	40
Adult Education	3 1.1%	51 19.2%	2 0.8%	4 1.5%	149 56.2%	3 1.1%	53 20.0%	- 0.0%	265
* ADULTS (included in Adult Education Center)	2	51	2	4	135	2	46	0	242
GARDEN GROVE UNIF TOTALS	110 0.2%	15,016 30.7%	431 0.9%	604 1.2%	26,073 53.4%	455 0.9%	6,095 12.5%	60 0.1%	48,844
IRVINE UNIFIED									
Alderwood Basics+ Elem	4 0.5%	447 54.8%	1 0.1%	17 2.1%	36 4.4%	7 0.9%	238 29.2%	66 8.1%	816
Bonita Canyon Elem	6 1.1%	197 35.8%	- 0.0%	5 0.9%	11 2.0%	2 0.4%	268 48.7%	61 11.1%	550
Brywood Elem	4 0.7%	254 43.9%	2 0.3%	29 5.0%	45 7.8%	14 2.4%	177 30.6%	54 9.3%	579
Canyon View Elem	8 1.0%	411 52.2%	1 0.1%	9 1.1%	20 2.5%	6 0.8%	273 34.7%	59 7.5%	787
College Park Elem	3 0.4%	317 41.3%	5 0.7%	31 4.0%	68 8.9%	23 3.0%	241 31.4%	79 10.3%	767
Culverdale Elem	6 0.9%	262 41.3%	7 1.1%	13 2.0%	73 11.5%	27 4.3%	174 27.4%	73 11.5%	635
Deerfield Elem	2 0.4%	256 46.2%	3 0.5%	15 2.7%	41 7.4%	17 3.1%	181 32.7%	39 7.0%	554
Eastshore Elem	3 0.5%	192 34.9%	4 0.7%	10 1.8%	48 8.7%	10 1.8%	238 43.3%	45 8.2%	550

ORANGE COUNTY DEPARTMENT OF EDUCATION

PUPIL MEMBERSHIP COUNT AND PERCENTAGE

SCHOOL DISTRICT School Name	AMER IND ALASK NAT	ASIAN	PACIFIC ISLANDER	FILIPINO	HISPANIC	NOT OF HISPANIC ORIGIN		MULTIPLE NO RESP	TOTALS
						AFR AMER	WHITE		
Greentree Elem	3	155	2	36	84	13	165	52	510
Meadow Park Elem	3	214	1	10	44	12	270	58	612
Northwood Elem	8	210	2	25	56	16	158	65	540
Oak Creek Elem	1	341	2	27	59	12	270	72	784
Plaza Vista Elem	6	488	3	37	45	9	228	65	881
Santiago Hills Elem	3	218	1	5	36	6	189	54	512
Springbrook Elem	1	219	1	4	60	14	202	36	537
Stone Creek Elem	1	134	2	16	36	9	239	47	484
Turtle Rock Elem	4	394	-	6	55	7	234	90	790
University Park Elem	3	230	3	11	64	21	152	42	526
Vista Verde Elem	6	164	3	19	41	7	459	73	772
Westpark Elem	3	281	3	22	36	11	171	65	592
Westwood Basics+ Elem	-	211	-	17	38	8	142	46	462
Woodbury Elem	2	232	3	23	60	11	185	53	569
Lakeside Middle	1	252	4	23	69	13	295	38	695
Rcho San Joaquin Middle	6	443	2	9	55	17	288	53	873
Sierra Vista Middle	4	471	1	32	56	19	361	50	994
South Lake Middle	8	162	1	14	73	21	250	34	563
Venado Middle	6	283	3	26	73	29	225	36	681
Irvine HS	11	766	9	66	218	64	729	58	1,921
Northwood HS	11	943	4	52	104	22	915	66	2,117
University HS	8	1,159	7	42	137	44	871	99	2,367
Woodbridge HS	11	642	15	40	173	64	1,091	81	2,117
Creekside HS (Alt,Cont)	2	23	1	5	43	15	89	13	191
San Joaquin HS (Alt)	-	16	-	2	9	5	83	25	140
Irvine Adult Trans. Prog.	-	2	-	-	1	1	8	-	12
NPS Students	1	6	-	-	8	2	32	1	50
IRVINE UNIFIED TOTALS	149	10,995	96	698	2,075	578	10,091	1,848	26,530
	0.6%	41.4%	0.4%	2.6%	7.8%	2.2%	38.0%	7.0%	

ORANGE COUNTY DEPARTMENT OF EDUCATION

PUPIL MEMBERSHIP COUNT AND PERCENTAGE

SCHOOL DISTRICT School Name	AMER IND ALASK NAT	ASIAN	PACIFIC ISLANDER	FILIPINO	HISPANIC	NOT OF HISPANIC ORIGIN		MULTIPLE NO RESP	TOTALS
						AFR AMER	WHITE		
LAGUNA BEACH UNIFIED									
El Morro Elem	2 0.3%	22 3.6%	4 0.7%	1 0.2%	61 10.1%	10 1.7%	479 79.4%	24 4.0%	603
Top of the World Elem	3 0.5%	23 3.8%	4 0.7%	3 0.5%	36 5.9%	5 0.8%	521 85.6%	14 2.3%	609
Thurston Middle	3 0.4%	23 3.4%	- 0.0%	2 0.3%	53 7.9%	8 1.2%	565 84.1%	18 2.7%	672
Laguna Beach HS	6 0.6%	34 3.2%	3 0.3%	2 0.2%	80 7.6%	11 1.0%	867 82.0%	54 5.1%	1,057
NPS Students	- 0.0%	- 0.0%	- 0.0%	- 0.0%	- 0.0%	- 0.0%	6 100.0%	- 0.0%	6
LAGUNA BEACH UNIF TOTALS	14 0.5%	102 3.5%	11 0.4%	8 0.3%	230 7.8%	34 1.2%	2,438 82.7%	110 3.7%	2,947
LOS ALAMITOS UNIFIED									
Hopkinson Elem	4 0.6%	55 8.6%	5 0.8%	16 2.5%	52 8.1%	11 1.7%	467 72.6%	33 5.1%	643
Lee Elem	1 0.2%	43 6.8%	4 0.6%	14 2.2%	107 17.0%	21 3.3%	322 51.3%	116 18.5%	628
Los Alamitos Elem	5 0.8%	88 14.4%	- 0.0%	34 5.6%	139 22.7%	26 4.2%	282 46.1%	38 6.2%	612
McGaugh Elem	2 0.3%	31 4.2%	5 0.7%	13 1.8%	64 8.7%	27 3.7%	466 63.6%	125 17.1%	733
Rossmoor Elem	1 0.2%	38 6.1%	6 1.0%	10 1.6%	65 10.4%	12 1.9%	369 58.9%	126 20.1%	627
Weaver Elem	- 0.0%	110 18.5%	- 0.0%	22 3.7%	91 15.3%	17 2.9%	324 54.4%	32 5.4%	596
McAuliffe Middle	5 0.4%	172 13.4%	5 0.4%	27 2.1%	149 11.6%	35 2.7%	771 60.2%	116 9.1%	1,280
Oak Middle	5 0.5%	69 6.9%	6 0.6%	30 3.0%	159 15.8%	38 3.8%	629 62.5%	70 7.0%	1,006
Los Alamitos HS	7 0.2%	362 11.2%	23 0.7%	62 1.9%	389 12.1%	111 3.4%	2,090 64.9%	175 5.4%	3,219
Laurel HS (Cont)	- 0.0%	- 0.0%	4 3.4%	1 0.9%	16 13.7%	8 6.8%	83 70.9%	5 4.3%	117
NPS Students	- 0.0%	- 0.0%	- 0.0%	1 7.1%	2 14.3%	- 0.0%	9 64.3%	2 14.3%	14
LOS ALAMITOS UNIF TOTALS	30 0.3%	968 10.2%	58 0.6%	230 2.4%	1,233 13.0%	306 3.2%	5,812 61.3%	838 8.8%	9,475
NEWPORT-MESA UNIFIED									
Adams Elem	- 0.0%	19 3.7%	8 1.5%	16 3.1%	336 64.9%	18 3.5%	117 22.6%	4 0.8%	518
Andersen Elem	3 0.6%	14 2.9%	- 0.0%	- 0.0%	12 2.5%	3 0.6%	457 93.5%	- 0.0%	489
California Elem	3 0.7%	19 4.7%	4 1.0%	7 1.7%	144 35.9%	5 1.2%	217 54.1%	2 0.5%	401
College Park Elem	2 0.4%	8 1.6%	3 0.6%	8 1.6%	379 73.9%	5 1.0%	108 21.1%	- 0.0%	513
Davis Elem	1 0.3%	25 6.7%	5 1.3%	5 1.3%	242 64.7%	10 2.7%	86 23.0%	- 0.0%	374
Eastbluff Elem	- 0.0%	19 5.2%	2 0.6%	2 0.6%	32 8.8%	3 0.8%	304 83.7%	1 0.3%	363
Harbor View Elem	3 0.7%	13 3.2%	1 0.2%	- 0.0%	21 5.2%	2 0.5%	365 90.1%	- 0.0%	405
Kaiser Elem	4 0.6%	15 2.2%	2 0.3%	9 1.3%	206 30.7%	14 2.1%	419 62.5%	1 0.1%	670

ORANGE COUNTY DEPARTMENT OF EDUCATION

PUPIL MEMBERSHIP COUNT AND PERCENTAGE

SCHOOL DISTRICT School Name	AMER IND ALASK NAT	ASIAN	PACIFIC ISLANDER	FILIPINO	HISPANIC	NOT OF HISPANIC ORIGIN		MULTIPLE NO RESP	TOTALS
						AFR AMER	WHITE		
Killybrooke Elem	1 0.2%	19 4.4%	18 4.2%	11 2.6%	251 58.6%	11 2.6%	116 27.1%	1 0.2%	428
Lincoln Elem	- 0.0%	58 9.4%	5 0.8%	3 0.5%	49 8.0%	9 1.5%	488 79.5%	2 0.3%	614
Mariners Elem	3 0.4%	22 3.1%	4 0.6%	9 1.3%	44 6.2%	7 1.0%	622 87.4%	1 0.1%	712
Newport Elem	2 0.5%	16 4.0%	3 0.8%	3 0.8%	43 10.8%	6 1.5%	327 81.8%	- 0.0%	400
Newport Coast Elem	1 0.1%	99 14.1%	2 0.3%	6 0.9%	10 1.4%	8 1.1%	576 82.1%	- 0.0%	702
Newport Heights Elem	3 0.5%	23 4.0%	6 1.1%	4 0.7%	89 15.6%	11 1.9%	435 76.2%	- 0.0%	571
Paularino Elem	1 0.3%	43 11.5%	3 0.8%	9 2.4%	173 46.1%	11 2.9%	135 36.0%	- 0.0%	375
Pomona Elem	- 0.0%	3 0.7%	- 0.0%	4 1.0%	384 94.6%	4 1.0%	10 2.5%	1 0.2%	406
Rea Elem	- 0.0%	4 0.6%	1 0.1%	3 0.4%	686 96.6%	5 0.7%	11 1.5%	- 0.0%	710
Sonora Elem	3 0.6%	40 8.4%	12 2.5%	7 1.5%	310 64.9%	9 1.9%	97 20.3%	- 0.0%	478
Victoria Elem	2 0.5%	11 2.6%	2 0.5%	5 1.2%	254 60.3%	5 1.2%	142 33.7%	- 0.0%	421
Whittier Elem	- 0.0%	4 0.6%	- 0.0%	3 0.5%	631 96.8%	- 0.0%	14 2.1%	- 0.0%	652
Wilson Elem	1 0.2%	4 0.7%	1 0.2%	1 0.2%	590 96.7%	1 0.2%	11 1.8%	1 0.2%	610
Woodland Elem	- 0.0%	14 3.0%	5 1.1%	2 0.4%	115 24.4%	11 2.3%	325 68.9%	- 0.0%	472
Ensign Intermediate	6 0.5%	20 1.8%	7 0.6%	8 0.7%	453 40.1%	13 1.2%	621 55.0%	1 0.1%	1,129
Tewinkle Middle	- 0.0%	13 2.0%	5 0.8%	7 1.1%	482 74.7%	14 2.2%	123 19.1%	1 0.2%	645
Corona del Mar HS	2 0.1%	201 8.9%	3 0.1%	5 0.2%	103 4.5%	17 0.7%	1,938 85.4%	1 0.0%	2,270
Costa Mesa HS	8 0.4%	137 7.4%	44 2.4%	49 2.6%	1,050 56.4%	46 2.5%	529 28.4%	- 0.0%	1,863
Estancia HS	3 0.2%	23 1.8%	2 0.2%	11 0.8%	924 70.8%	13 1.0%	329 25.2%	1 0.1%	1,306
Newport Harbor HS	9 0.4%	48 2.0%	8 0.3%	10 0.4%	725 29.9%	28 1.2%	1,597 65.8%	1 0.0%	2,426
Or Coast Mid College HS	- 0.0%	8 9.8%	- 0.0%	1 1.2%	10 12.2%	2 2.4%	61 74.4%	- 0.0%	82
Monte Vista HS (Alt)	- 0.0%	- 0.0%	- 0.0%	- 0.0%	8 14.3%	1 1.8%	47 83.9%	- 0.0%	56
Back Bay HS (Cont)	1 0.4%	3 1.3%	- 0.0%	1 0.4%	125 56.1%	4 1.8%	89 39.9%	- 0.0%	223
Early College HS	- 0.0%	7 3.4%	3 1.5%	- 0.0%	127 62.3%	4 2.0%	63 30.9%	- 0.0%	204
NPS Students	- 0.0%	1 5.3%	- 0.0%	- 0.0%	4 21.1%	- 0.0%	14 73.7%	- 0.0%	19
NEWPORT-MESA UNIF TOTALS	62 0.3%	953 4.4%	159 0.7%	209 1.0%	9,012 41.9%	300 1.4%	10,793 50.2%	19 0.1%	21,507

ORANGE COUNTY DEPARTMENT OF EDUCATION

PUPIL MEMBERSHIP COUNT AND PERCENTAGE

SCHOOL DISTRICT School Name	AMER IND ALASK NAT	ASIAN	PACIFIC ISLANDER	FILIPINO	HISPANIC	NOT OF HISPANIC ORIGIN		MULTIPLE NO RESP	TOTALS
						AFR AMER	WHITE		
ORANGE UNIFIED									
Anaheim Hills Elem	-	88	2	24	48	5	323	48	538
	0.0%	16.4%	0.4%	4.5%	8.9%	0.9%	60.0%	8.9%	
California Elem	2	8	1	3	585	2	29	5	635
	0.3%	1.3%	0.2%	0.5%	92.1%	0.3%	4.6%	0.8%	
Cambridge Elem	2	2	3	3	382	6	93	33	524
	0.4%	0.4%	0.6%	0.6%	72.9%	1.1%	17.7%	6.3%	
Canyon Rim Elem	1	108	1	13	72	14	370	67	646
	0.2%	16.7%	0.2%	2.0%	11.1%	2.2%	57.3%	10.4%	
Chapman Hills Elem	1	63	3	17	38	2	199	35	358
	0.3%	17.6%	0.8%	4.7%	10.6%	0.6%	55.6%	9.8%	
Crescent Primary Elem	1	60	-	10	60	3	159	35	328
	0.3%	18.3%	0.0%	3.0%	18.3%	0.9%	48.5%	10.7%	
Esplanade Elem	-	18	-	3	461	-	10	3	495
	0.0%	3.6%	0.0%	0.6%	93.1%	0.0%	2.0%	0.6%	
Fairhaven Elem	-	4	6	10	483	3	12	7	525
	0.0%	0.8%	1.1%	1.9%	92.0%	0.6%	2.3%	1.3%	
Fletcher Elem	2	17	4	10	241	4	108	38	424
	0.5%	4.0%	0.9%	2.4%	56.8%	0.9%	25.5%	9.0%	
Handy Elem	2	9	5	1	471	-	38	16	542
	0.4%	1.7%	0.9%	0.2%	86.9%	0.0%	7.0%	3.0%	
Imperial Elem	1	45	2	5	38	7	218	42	358
	0.3%	12.6%	0.6%	1.4%	10.6%	2.0%	60.9%	11.7%	
Jordan Elem	1	3	-	2	408	3	12	3	432
	0.2%	0.7%	0.0%	0.5%	94.4%	0.7%	2.8%	0.7%	
Lampson Elem	1	132	4	8	661	13	24	16	859
	0.1%	15.4%	0.5%	0.9%	76.9%	1.5%	2.8%	1.9%	
La Veta Elem	2	47	3	23	418	15	268	68	844
	0.2%	5.6%	0.4%	2.7%	49.5%	1.8%	31.8%	8.1%	
Linda Vista Elem	-	40	2	11	73	7	262	44	439
	0.0%	9.1%	0.5%	2.5%	16.6%	1.6%	59.7%	10.0%	
McPherson Elem	4	96	2	19	207	16	458	40	842
	0.5%	11.4%	0.2%	2.3%	24.6%	1.9%	54.4%	4.8%	
Nohl Canyon Elem	3	124	2	11	47	-	302	43	532
	0.6%	23.3%	0.4%	2.1%	8.8%	0.0%	56.8%	8.1%	
Olive Elem	1	13	2	7	166	10	126	54	379
	0.3%	3.4%	0.5%	1.8%	43.8%	2.6%	33.2%	14.2%	
Palmyra Elem	5	42	2	17	380	5	122	24	597
	0.8%	7.0%	0.3%	2.8%	63.7%	0.8%	20.4%	4.0%	
Panorama Elem	-	34	-	4	48	4	203	37	330
	0.0%	10.3%	0.0%	1.2%	14.5%	1.2%	61.5%	11.2%	
Parkside Elem	-	4	-	1	6	-	7	-	18
	0.0%	22.2%	0.0%	5.6%	33.3%	0.0%	38.9%	0.0%	
Prospect Elem	1	21	2	10	318	17	37	19	425
	0.2%	4.9%	0.5%	2.4%	74.8%	4.0%	8.7%	4.5%	
Riverdale Elem	1	31	4	2	131	12	71	15	267
	0.4%	11.6%	1.5%	0.7%	49.1%	4.5%	26.6%	5.6%	
Running Springs Elem	1	190	3	29	99	9	406	24	761
	0.1%	25.0%	0.4%	3.8%	13.0%	1.2%	53.4%	3.2%	
Serrano Elem	1	44	-	3	102	2	279	38	469
	0.2%	9.4%	0.0%	0.6%	21.7%	0.4%	59.5%	8.1%	
Silverado Elem	-	-	-	-	9	-	64	1	74
	0.0%	0.0%	0.0%	0.0%	12.2%	0.0%	86.5%	1.4%	

ORANGE COUNTY DEPARTMENT OF EDUCATION

PUPIL MEMBERSHIP COUNT AND PERCENTAGE

SCHOOL DISTRICT School Name	AMER IND ALASK NAT	ASIAN	PACIFIC ISLANDER	FILIPINO	HISPANIC	NOT OF HISPANIC ORIGIN		MULTIPLE NO RESP	TOTALS
						AFR AMER	WHITE		
Sycamore Elem	1 0.2%	14 2.8%	1 0.2%	11 2.2%	427 84.6%	11 2.2%	26 5.1%	14 2.8%	505
Taft Elem	- 0.0%	28 5.3%	- 0.0%	8 1.5%	390 73.4%	9 1.7%	94 17.7%	2 0.4%	531
Villa Park Elem	3 0.5%	51 8.6%	6 1.0%	6 1.0%	61 10.3%	4 0.7%	414 69.9%	47 7.9%	592
West Orange Elem	6 1.1%	12 2.2%	6 1.1%	12 2.2%	411 74.1%	8 1.4%	63 11.4%	37 6.7%	555
Cerro Villa Middle	5 0.4%	119 10.4%	13 1.1%	17 1.5%	385 33.5%	18 1.6%	545 47.5%	46 4.0%	1,148
Crescent Intermediate	5 1.3%	86 22.9%	1 0.3%	9 2.4%	63 16.8%	5 1.3%	169 44.9%	38 10.1%	376
Portola Middle	8 1.0%	89 11.1%	7 0.9%	11 1.4%	621 77.3%	10 1.2%	42 5.2%	15 1.9%	803
Yorba Middle	2 0.3%	14 2.0%	3 0.4%	- 0.0%	571 80.3%	6 0.8%	107 15.0%	8 1.1%	711
Canyon HS	13 0.5%	465 19.3%	17 0.7%	57 2.4%	357 14.8%	56 2.3%	1,394 57.8%	52 2.2%	2,411
El Modena HS	10 0.5%	128 5.8%	8 0.4%	34 1.5%	1,083 49.3%	33 1.5%	861 39.2%	38 1.7%	2,195
Orange HS	13 0.5%	164 6.7%	18 0.7%	23 0.9%	1,775 72.6%	35 1.4%	379 15.5%	38 1.6%	2,445
Villa Park HS	21 0.9%	245 10.0%	17 0.7%	40 1.6%	708 29.0%	28 1.1%	1,304 53.3%	82 3.4%	2,445
Orange Comm Day	- 0.0%	1 5.3%	- 0.0%	- 0.0%	16 84.2%	- 0.0%	1 5.3%	1 5.3%	19
Richland HS (Cont)	2 0.5%	4 1.0%	4 1.0%	1 0.3%	265 68.8%	7 1.8%	95 24.7%	7 1.8%	385
Canyon Hills TMR	7 5.9%	15 12.6%	1 0.8%	1 0.8%	45 37.8%	2 1.7%	47 39.5%	1 0.8%	119
Home School	- 0.0%	2 2.3%	- 0.0%	- 0.0%	28 32.2%	- 0.0%	52 59.8%	5 5.7%	87
El Rancho Middle (Charter School)	7 0.6%	226 20.2%	8 0.7%	27 2.4%	176 15.7%	19 1.7%	608 54.4%	47 4.2%	1,118
Santiago Middle (Charter School)	5 0.5%	61 5.9%	3 0.3%	21 2.0%	572 55.2%	15 1.4%	325 31.3%	35 3.4%	1,037
NPS Students	- 0.0%	4 8.5%	- 0.0%	- 0.0%	8 17.0%	2 4.3%	32 68.1%	1 2.1%	47
ORANGE UNIFIED TOTALS	141 0.5%	2,971 9.8%	166 0.6%	524 1.7%	13,914 46.1%	427 1.4%	10,758 35.7%	1,269 4.2%	30,170
PLACENTIA-YORBA LINDA UNIFIED									
Brookhaven Elem	- 0.0%	70 14.2%	- 0.0%	1 0.2%	70 14.2%	5 1.0%	322 65.2%	26 5.3%	494
Bryant Ranch Elem	6 0.8%	102 13.6%	4 0.5%	19 2.5%	105 14.0%	16 2.1%	453 60.2%	47 6.3%	752
Fairmont Elem	- 0.0%	93 9.8%	- 0.0%	14 1.5%	114 12.1%	11 1.2%	691 73.0%	23 2.4%	946
Glenknoll Drive Elem	2 0.4%	40 8.2%	1 0.2%	4 0.8%	56 11.4%	5 1.0%	353 72.0%	29 5.9%	490
Glenview Elem	- 0.0%	44 7.7%	1 0.2%	5 0.9%	257 44.7%	15 2.6%	222 38.6%	31 5.4%	575
Golden Elem	2 0.3%	172 23.5%	3 0.4%	4 0.5%	75 10.2%	11 1.5%	409 55.9%	56 7.7%	732
Lakeview Elem	- 0.0%	180 32.0%	- 0.0%	13 2.3%	63 11.2%	10 1.8%	253 44.9%	44 7.8%	563

ORANGE COUNTY DEPARTMENT OF EDUCATION

PUPIL MEMBERSHIP COUNT AND PERCENTAGE

SCHOOL DISTRICT School Name	AMER IND ALASK NAT	ASIAN	PACIFIC ISLANDER	FILIPINO	HISPANIC	NOT OF HISPANIC ORIGIN		MULTIPLE NO RESP	TOTALS
						AFR AMER	WHITE		
Linda Vista Elem	2 0.5%	29 7.5%	- 0.0%	1 0.3%	44 11.4%	8 2.1%	283 73.5%	18 4.7%	385
Melrose Elem	- 0.0%	2 0.3%	- 0.0%	- 0.0%	597 98.0%	6 1.0%	4 0.7%	- 0.0%	609
Morse Avenue Elem	- 0.0%	29 5.3%	- 0.0%	10 1.8%	316 57.8%	17 3.1%	143 26.1%	32 5.9%	547
Paine Elem	- 0.0%	36 9.1%	- 0.0%	10 2.5%	102 25.8%	2 0.5%	216 54.5%	30 7.6%	396
Parkview Elem	- 0.0%	16 7.0%	1 0.4%	1 0.4%	29 12.7%	5 2.2%	172 75.4%	4 1.8%	228
Rio Vista Elem	- 0.0%	30 3.2%	4 0.4%	8 0.9%	760 81.8%	25 2.7%	87 9.4%	15 1.6%	929
Rose Drive Elem	- 0.0%	30 8.0%	- 0.0%	11 2.9%	95 25.5%	9 2.4%	222 59.5%	6 1.6%	373
Ruby Drive Elem	- 0.0%	12 2.5%	- 0.0%	2 0.4%	420 89.2%	6 1.3%	28 5.9%	3 0.6%	471
Sierra Vista Elem	1 0.2%	42 8.4%	6 1.2%	3 0.6%	109 21.8%	11 2.2%	282 56.3%	47 9.4%	501
Topaz Elem	- 0.0%	14 2.8%	- 0.0%	4 0.8%	450 89.6%	10 2.0%	22 4.4%	2 0.4%	502
Travis Ranch Elem	1 0.1%	123 8.6%	5 0.3%	15 1.0%	143 10.0%	17 1.2%	1,075 75.1%	52 3.6%	1,431
Tynes Elem	1 0.1%	54 6.5%	4 0.5%	14 1.7%	588 70.7%	7 0.8%	116 13.9%	48 5.8%	832
Van Buren Elem	2 0.3%	99 14.0%	3 0.4%	27 3.8%	130 18.4%	14 2.0%	409 57.8%	24 3.4%	708
Wagner Elem	1 0.2%	43 10.1%	1 0.2%	7 1.6%	104 24.5%	12 2.8%	217 51.1%	40 9.4%	425
Woodsboro Elem	1 0.2%	67 13.4%	3 0.6%	5 1.0%	101 20.2%	4 0.8%	307 61.4%	12 2.4%	500
Bernardo Yorba Jr High	2 0.2%	90 10.6%	- 0.0%	6 0.7%	140 16.4%	7 0.8%	600 70.4%	7 0.8%	852
Kraemer Middle	1 0.1%	136 12.7%	6 0.6%	18 1.7%	615 57.5%	23 2.1%	257 24.0%	14 1.3%	1,070
Tuffree Middle	2 0.3%	66 9.0%	4 0.5%	10 1.4%	202 27.4%	14 1.9%	423 57.4%	16 2.2%	737
Valadez Middle	- 0.0%	14 3.1%	1 0.2%	5 1.1%	402 87.6%	8 1.7%	24 5.2%	5 1.1%	459
Yorba Linda Middle	7 0.8%	115 13.3%	2 0.2%	13 1.5%	144 16.6%	30 3.5%	545 62.9%	11 1.3%	867
El Dorado HS	3 0.1%	225 8.8%	6 0.2%	24 0.9%	505 19.7%	45 1.8%	1,738 67.7%	23 0.9%	2,569
Esperanza HS	4 0.1%	333 10.6%	6 0.2%	31 1.0%	406 13.0%	51 1.6%	2,268 72.4%	34 1.1%	3,133
Valencia HS	7 0.3%	288 11.2%	7 0.3%	32 1.2%	1,460 56.9%	57 2.2%	685 26.7%	30 1.2%	2,566
La Entrada HS (Alt)	- 0.0%	- 0.0%	- 0.0%	- 0.0%	8 8.5%	1 1.1%	83 88.3%	2 2.1%	94
El Camino Real HS (Cont)	- 0.0%	3 1.0%	1 0.3%	- 0.0%	183 59.2%	6 1.9%	113 36.6%	3 1.0%	309
Key TMR	- 0.0%	10 18.2%	- 0.0%	1 1.8%	14 25.5%	1 1.8%	28 50.9%	1 1.8%	55
NPS Students	- 0.0%	3 11.5%	- 0.0%	- 0.0%	4 15.4%	- 0.0%	18 69.2%	1 3.8%	26
* ADULTS (included in various High Schools)	0	4	0	1	9	2	13	0	29
PLACENTIA-YL UNIFIED TOTALS	45 0.2%	2,610 10.0%	69 0.3%	318 1.2%	8,811 33.7%	469 1.8%	13,068 50.0%	736 2.8%	26,126

ORANGE COUNTY DEPARTMENT OF EDUCATION

PUPIL MEMBERSHIP COUNT AND PERCENTAGE

SCHOOL DISTRICT School Name	AMER IND ALASK NAT	ASIAN	PACIFIC ISLANDER	FILIPINO	HISPANIC	NOT OF HISPANIC ORIGIN		MULTIPLE NO RESP	TOTALS
						AFR AMER	WHITE		
SADDLEBACK VALLEY UNIFIED									
Aliso Elem	1 0.3%	22 5.8%	3 0.8%	13 3.4%	210 55.0%	6 1.6%	121 31.7%	6 1.6%	382
Cielo Vista Elem	4 0.4%	34 3.7%	- 0.0%	37 4.0%	353 38.6%	11 1.2%	432 47.3%	43 4.7%	914
Cordillera Elem	1 0.2%	58 9.4%	6 1.0%	23 3.7%	188 30.5%	15 2.4%	316 51.2%	10 1.6%	617
Del Cerro Elem	- 0.0%	48 10.1%	1 0.2%	13 2.7%	93 19.6%	14 3.0%	282 59.5%	23 4.9%	474
Del Lago Elem	1 0.2%	24 4.7%	4 0.8%	15 2.9%	132 25.9%	10 2.0%	307 60.3%	16 3.1%	509
De Portola Elem	- 0.0%	47 8.2%	5 0.9%	22 3.8%	70 12.2%	15 2.6%	399 69.4%	17 3.0%	575
Foothill Ranch Elem	- 0.0%	181 13.7%	6 0.5%	32 2.4%	122 9.3%	20 1.5%	885 67.2%	71 5.4%	1,317
Glen Yermo Elem	5 1.0%	20 3.9%	- 0.0%	16 3.1%	302 58.6%	5 1.0%	155 30.1%	12 2.3%	515
La Madera Elem	4 0.7%	60 9.8%	2 0.3%	16 2.6%	132 21.5%	9 1.5%	365 59.3%	27 4.4%	615
La Tierra Elem	1 0.6%	15 8.4%	- 0.0%	6 3.4%	55 30.7%	4 2.2%	93 52.0%	5 2.8%	179
Lake Forest Elem	2 0.2%	94 11.7%	2 0.2%	30 3.7%	192 23.9%	24 3.0%	425 53.0%	33 4.1%	802
Linda Vista Elem	1 0.2%	16 2.9%	3 0.6%	3 0.6%	291 53.4%	12 2.2%	218 40.0%	1 0.2%	545
Lomarena Elem	1 0.2%	35 6.8%	2 0.4%	21 4.1%	161 31.1%	10 1.9%	273 52.7%	15 2.9%	518
Melinda Heights Elem	2 0.4%	10 2.2%	- 0.0%	36 7.9%	332 72.8%	7 1.5%	64 14.0%	5 1.1%	456
Montevideo Elem	4 0.3%	106 8.9%	4 0.3%	50 4.2%	124 10.4%	23 1.9%	824 69.3%	54 4.5%	1,189
O'Neill Elem	2 0.5%	25 6.1%	3 0.7%	4 1.0%	62 15.1%	4 1.0%	289 70.5%	21 5.1%	410
Olivewood Elem	2 0.4%	26 5.3%	- 0.0%	17 3.5%	104 21.2%	7 1.4%	309 63.1%	25 5.1%	490
Portola Hills Elem	- 0.0%	61 7.2%	- 0.0%	16 1.9%	74 8.7%	12 1.4%	638 75.2%	47 5.5%	848
Rancho Canada Elem	- 0.0%	60 8.6%	2 0.3%	19 2.7%	119 17.0%	23 3.3%	455 65.1%	21 3.0%	699
Robinson Elem	2 0.2%	37 4.4%	3 0.4%	9 1.1%	64 7.6%	6 0.7%	683 80.8%	41 4.9%	845
San Joaquin Elem	1 0.2%	30 4.8%	4 0.6%	31 5.0%	294 47.4%	15 2.4%	210 33.9%	35 5.6%	620
Santiago Elem	2 0.4%	37 8.0%	- 0.0%	14 3.0%	153 32.9%	9 1.9%	210 45.2%	40 8.6%	465
Trabuco Elem	1 1.4%	2 2.8%	- 0.0%	- 0.0%	20 28.2%	- 0.0%	44 62.0%	4 5.6%	71
Trabuco Mesa Elem	4 0.6%	53 8.3%	7 1.1%	23 3.6%	124 19.5%	8 1.3%	394 61.9%	24 3.8%	637
Valencia Elem	1 0.1%	60 8.9%	6 0.9%	5 0.7%	82 12.2%	1 0.1%	491 73.1%	26 3.9%	672

ORANGE COUNTY DEPARTMENT OF EDUCATION

PUPIL MEMBERSHIP COUNT AND PERCENTAGE

SCHOOL DISTRICT School Name	AMER IND ALASK NAT	ASIAN	PACIFIC ISLANDER	FILIPINO	HISPANIC	NOT OF HISPANIC ORIGIN		MULTIPLE NO RESP	TOTALS
						AFR AMER	WHITE		
La Paz Intermediate	2 0.2%	86 7.6%	8 0.7%	25 2.2%	222 19.6%	29 2.6%	751 66.2%	11 1.0%	1,134
Los Alisos Intermediate	2 0.2%	71 6.5%	5 0.5%	56 5.2%	466 42.9%	20 1.8%	457 42.1%	9 0.8%	1,086
RSM Intermediate	6 0.4%	135 8.0%	6 0.4%	43 2.6%	286 17.0%	31 1.8%	1,146 68.3%	25 1.5%	1,678
Serrano Intermediate	6 0.4%	86 6.2%	7 0.5%	41 3.0%	311 22.5%	36 2.6%	882 63.7%	15 1.1%	1,384
El Toro HS	4 0.1%	217 7.6%	6 0.2%	64 2.2%	662 23.1%	63 2.2%	1,828 63.9%	17 0.6%	2,861
Laguna Hills HS	2 0.1%	174 9.4%	4 0.2%	81 4.4%	493 26.8%	31 1.7%	1,050 57.0%	7 0.4%	1,842
Mission Viejo HS	10 0.4%	168 5.9%	7 0.2%	51 1.8%	535 18.8%	58 2.0%	1,992 70.1%	20 0.7%	2,841
Trabuco Hills HS	16 0.5%	299 9.1%	11 0.3%	133 4.1%	565 17.3%	85 2.6%	2,132 65.2%	29 0.9%	3,270
Mira Monte HS (Alt)	1 0.8%	4 3.4%	2 1.7%	5 4.2%	15 12.6%	3 2.5%	88 73.9%	1 0.8%	119
Silverado HS (Cont)	5 1.3%	7 1.8%	2 0.5%	8 2.1%	178 46.4%	10 2.6%	171 44.5%	3 0.8%	384
Esperanza Spec Ed	1 1.1%	5 5.7%	- 0.0%	2 2.3%	17 19.5%	4 4.6%	58 66.7%	- 0.0%	87
Gates Elem (Charter School)	2 0.2%	18 2.1%	1 0.1%	17 2.0%	600 70.3%	15 1.8%	157 18.4%	43 5.0%	853
NPS Students	- 0.0%	- 0.0%	- 0.0%	- 0.0%	4 12.1%	2 6.1%	27 81.8%	- 0.0%	33
SB VALLEY UNIFIED TOTALS	99 0.3%	2,431 7.4%	122 0.4%	997 3.0%	8,207 24.9%	657 2.0%	19,621 59.6%	802 2.4%	32,936
SANTA ANA UNIFIED									
Adams Elem	- 0.0%	10 1.5%	2 0.3%	- 0.0%	637 96.8%	- 0.0%	4 0.6%	5 0.8%	658
Carver Elem	- 0.0%	- 0.0%	1 0.2%	- 0.0%	515 99.0%	1 0.2%	- 0.0%	3 0.6%	520
Davis Elem	- 0.0%	- 0.0%	- 0.0%	- 0.0%	717 99.0%	3 0.4%	2 0.3%	2 0.3%	724
Diamond Elem	3 0.5%	1 0.2%	- 0.0%	- 0.0%	602 99.0%	- 0.0%	2 0.3%	- 0.0%	608
Edison Elem	- 0.0%	2 0.3%	- 0.0%	1 0.1%	708 98.9%	3 0.4%	2 0.3%	- 0.0%	716
Esqueda Elem	- 0.0%	6 0.7%	- 0.0%	1 0.1%	825 96.9%	- 0.0%	13 1.5%	6 0.7%	851
Franklin Elem	1 0.2%	- 0.0%	- 0.0%	- 0.0%	469 98.3%	- 0.0%	4 0.8%	3 0.6%	477
Fremont Elem	- 0.0%	12 1.4%	- 0.0%	- 0.0%	844 96.9%	3 0.3%	5 0.6%	7 0.8%	871
Garfield Elem	- 0.0%	- 0.0%	- 0.0%	- 0.0%	708 100.0%	- 0.0%	- 0.0%	- 0.0%	708
Greenville Fundamental	- 0.0%	129 13.3%	3 0.3%	10 1.0%	738 75.9%	6 0.6%	58 6.0%	28 2.9%	972
Harvey Elem	- 0.0%	1 0.3%	- 0.0%	2 0.5%	388 98.0%	- 0.0%	3 0.8%	2 0.5%	396
Heninger Elem	- 0.0%	1 0.1%	- 0.0%	3 0.4%	781 98.4%	2 0.3%	6 0.8%	1 0.1%	794
Heroes Elem	- 0.0%	1 0.2%	- 0.0%	1 0.2%	646 98.8%	2 0.3%	1 0.2%	3 0.5%	654

ORANGE COUNTY DEPARTMENT OF EDUCATION

PUPIL MEMBERSHIP COUNT AND PERCENTAGE

SCHOOL DISTRICT School Name	AMER IND ALASK NAT	ASIAN	PACIFIC ISLANDER	FILIPINO	HISPANIC	NOT OF HISPANIC ORIGIN		MULTIPLE NO RESP	TOTALS
						AFR AMER	WHITE		
Hoover Elem	1	10	-	-	503	4	7	6	531
	0.2%	1.9%	0.0%	0.0%	94.7%	0.8%	1.3%	1.1%	
Jackson Elem	-	31	1	3	1,127	8	5	3	1,178
	0.0%	2.6%	0.1%	0.3%	95.7%	0.7%	0.4%	0.3%	
Jefferson Elem	1	44	2	11	808	4	56	6	932
	0.1%	4.7%	0.2%	1.2%	86.7%	0.4%	6.0%	0.6%	
Kennedy Elem	-	-	-	5	788	-	1	-	794
	0.0%	0.0%	0.0%	0.6%	99.2%	0.0%	0.1%	0.0%	
King Elem	-	-	1	-	812	4	4	1	822
	0.0%	0.0%	0.1%	0.0%	98.8%	0.5%	0.5%	0.1%	
Lincoln Elem	-	14	3	1	1,109	9	10	4	1,150
	0.0%	1.2%	0.3%	0.1%	96.4%	0.8%	0.9%	0.3%	
Lowell Elem	-	-	-	-	887	-	3	2	892
	0.0%	0.0%	0.0%	0.0%	99.4%	0.0%	0.3%	0.2%	
Madison Elem	-	27	5	2	830	4	3	1	872
	0.0%	3.1%	0.6%	0.2%	95.2%	0.5%	0.3%	0.1%	
Martin Elem	-	1	1	-	760	1	9	3	775
	0.0%	0.1%	0.1%	0.0%	98.1%	0.1%	1.2%	0.4%	
Monroe Elem	1	4	-	4	452	1	12	2	476
	0.2%	0.8%	0.0%	0.8%	95.0%	0.2%	2.5%	0.4%	
Monte Vista Elem	-	4	-	-	619	5	4	1	633
	0.0%	0.6%	0.0%	0.0%	97.8%	0.8%	0.6%	0.2%	
Muir Fundamental	-	27	3	3	756	11	40	3	843
	0.0%	3.2%	0.4%	0.4%	89.7%	1.3%	4.7%	0.4%	
Pio Pico Elem	-	-	-	1	729	-	3	4	737
	0.0%	0.0%	0.0%	0.1%	98.9%	0.0%	0.4%	0.5%	
Remington Elem	-	4	-	-	356	-	9	1	370
	0.0%	1.1%	0.0%	0.0%	96.2%	0.0%	2.4%	0.3%	
Romero-Cruz Elem	-	2	2	-	354	-	-	-	358
	0.0%	0.6%	0.6%	0.0%	98.9%	0.0%	0.0%	0.0%	
Roosevelt Elem	-	1	-	-	918	-	-	1	920
	0.0%	0.1%	0.0%	0.0%	99.8%	0.0%	0.0%	0.1%	
Santiago Elem	1	11	1	3	724	12	62	45	859
	0.1%	1.3%	0.1%	0.3%	84.3%	1.4%	7.2%	5.2%	
Sepulveda Elem	-	10	1	2	528	1	2	-	544
	0.0%	1.8%	0.2%	0.4%	97.1%	0.2%	0.4%	0.0%	
Taft Elem	-	72	3	7	643	18	63	1	807
	0.0%	8.9%	0.4%	0.9%	79.7%	2.2%	7.8%	0.1%	
Thorpe Fundamental	1	85	-	5	668	10	31	9	809
	0.1%	10.5%	0.0%	0.6%	82.6%	1.2%	3.8%	1.1%	
Walker Elem	-	40	-	-	573	-	1	2	616
	0.0%	6.5%	0.0%	0.0%	93.0%	0.0%	0.2%	0.3%	
Washington Elem	-	13	7	-	1,109	-	6	2	1,137
	0.0%	1.1%	0.6%	0.0%	97.5%	0.0%	0.5%	0.2%	
Wilson Elem	-	2	-	2	684	-	1	4	693
	0.0%	0.3%	0.0%	0.3%	98.7%	0.0%	0.1%	0.6%	
Carr Intermediate	2	21	5	1	1,683	6	7	-	1,725
	0.1%	1.2%	0.3%	0.1%	97.6%	0.3%	0.4%	0.0%	
Lathrop Intermediate	-	14	2	-	1,373	1	4	1	1,395
	0.0%	1.0%	0.1%	0.0%	98.4%	0.1%	0.3%	0.1%	

ORANGE COUNTY DEPARTMENT OF EDUCATION

PUPIL MEMBERSHIP COUNT AND PERCENTAGE

SCHOOL DISTRICT School Name	AMER IND ALASK NAT	ASIAN	PACIFIC ISLANDER	FILIPINO	HISPANIC	NOT OF HISPANIC ORIGIN		MULTIPLE NO RESP	TOTALS
						AFR AMER	WHITE		
MacArthur Fundamental	1 0.1%	118 9.2%	11 0.9%	10 0.8%	1,058 82.6%	16 1.2%	65 5.1%	2 0.2%	1,281
McFadden Intermediate	- 0.0%	61 4.0%	7 0.5%	9 0.6%	1,361 89.7%	20 1.3%	56 3.7%	3 0.2%	1,517
Mendez Fundamental	1 0.1%	11 0.8%	1 0.1%	- 0.0%	1,397 96.6%	7 0.5%	21 1.5%	8 0.6%	1,446
Sierra Intermediate	2 0.2%	20 2.3%	- 0.0%	1 0.1%	832 95.1%	9 1.0%	6 0.7%	5 0.6%	875
Spurgeon Intermediate	- 0.0%	23 1.6%	3 0.2%	2 0.1%	1,358 96.9%	7 0.5%	6 0.4%	2 0.1%	1,401
Villa Fundamental	3 0.2%	35 2.4%	- 0.0%	- 0.0%	1,398 96.8%	2 0.1%	5 0.3%	1 0.1%	1,444
Willard Intermediate	1 0.1%	4 0.3%	3 0.3%	- 0.0%	1,154 98.5%	3 0.3%	3 0.3%	4 0.3%	1,172
Century HS	2 0.1%	85 3.4%	- 0.0%	1 0.0%	2,363 95.6%	3 0.1%	14 0.6%	4 0.2%	2,472
Godinez Fundamental	- 0.0%	32 2.0%	- 0.0%	1 0.1%	1,484 94.5%	20 1.3%	33 2.1%	1 0.1%	1,571
Saddleback HS	3 0.1%	41 1.9%	8 0.4%	13 0.6%	2,024 94.4%	13 0.6%	42 2.0%	- 0.0%	2,144
Santa Ana HS	1 0.0%	15 0.4%	2 0.1%	3 0.1%	3,291 97.7%	18 0.5%	33 1.0%	5 0.1%	3,368
Segerstrom HS	4 0.2%	232 9.5%	5 0.2%	16 0.7%	2,012 82.2%	49 2.0%	128 5.2%	3 0.1%	2,449
Valley HS	1 0.0%	43 1.6%	5 0.2%	3 0.1%	2,521 96.6%	19 0.7%	15 0.6%	3 0.1%	2,610
Middle College HS (Alt)	- 0.0%	8 2.6%	1 0.3%	- 0.0%	287 92.6%	4 1.3%	10 3.2%	- 0.0%	310
Chavez HS (Cont)	- 0.0%	8 2.7%	- 0.0%	- 0.0%	284 96.3%	3 1.0%	- 0.0%	- 0.0%	295
Lorin Grisnet Academy	- 0.0%	4 1.3%	1 0.3%	- 0.0%	287 96.3%	- 0.0%	5 1.7%	1 0.3%	298
Santa Ana Comm Day	- 0.0%	1 0.9%	- 0.0%	- 0.0%	113 99.1%	- 0.0%	- 0.0%	- 0.0%	114
Edward B. Cole Academy (Charter School)	- 0.0%	- 0.0%	- 0.0%	- 0.0%	312 96.0%	3 0.9%	1 0.3%	9 2.8%	325
El Sol (Charter School)	- 0.0%	1 0.2%	- 0.0%	- 0.0%	454 96.2%	4 0.8%	11 2.3%	2 0.4%	472
Nova Academy (Charter School)	- 0.0%	- 0.0%	- 0.0%	- 0.0%	109 95.6%	1 0.9%	2 1.8%	2 1.8%	114
OC Educational Arts (Charter School)	- 0.0%	5 1.0%	- 0.0%	- 0.0%	430 82.4%	15 2.9%	49 9.4%	23 4.4%	522
OCHS of the Arts (Charter School)	10 0.7%	175 12.8%	14 1.0%	- 0.0%	150 10.9%	21 1.5%	816 59.6%	184 13.4%	1,370
NPS Students	1 1.9%	4 7.5%	- 0.0%	- 0.0%	39 73.6%	- 0.0%	9 17.0%	- 0.0%	53
SANTA ANA UNIFIED TOTALS	41 0.1%	1,526 2.7%	104 0.2%	127 0.2%	53,089 92.4%	356 0.6%	1,773 3.1%	424 0.7%	57,440
<u>TUSTIN UNIFIED</u>									
Arroyo Elem	3 0.5%	33 5.6%	3 0.5%	3 0.5%	42 7.1%	4 0.7%	468 79.5%	33 5.6%	589
Benson Elem	2 0.5%	28 7.3%	3 0.8%	10 2.6%	176 45.6%	24 6.2%	125 32.4%	18 4.7%	386
Beswick Elem	2 0.3%	30 4.9%	1 0.2%	11 1.8%	510 83.3%	17 2.8%	27 4.4%	14 2.3%	612
Estock Elem	2 0.4%	15 3.1%	- 0.0%	2 0.4%	397 83.1%	10 2.1%	31 6.5%	21 4.4%	478
Foss Elem	2 0.5%	17 4.0%	3 0.7%	11 2.6%	213 49.9%	3 0.7%	156 36.5%	22 5.2%	427

ORANGE COUNTY DEPARTMENT OF EDUCATION

PUPIL MEMBERSHIP COUNT AND PERCENTAGE

SCHOOL DISTRICT School Name	AMER IND ALASK NAT	ASIAN	PACIFIC ISLANDER	FILIPINO	HISPANIC	NOT OF HISPANIC ORIGIN		MULTIPLE NO RESP	TOTALS
						AFR AMER	WHITE		
Heideman Elem	1 0.2%	4 0.9%	6 1.4%	1 0.2%	412 93.4%	9 2.0%	4 0.9%	4 0.9%	441
Hicks Canyon Elem	2 0.2%	404 45.2%	6 0.7%	31 3.5%	59 6.6%	17 1.9%	304 34.0%	71 7.9%	894
Ladera Elem	- 0.0%	96 25.7%	- 0.0%	7 1.9%	33 8.8%	6 1.6%	191 51.2%	40 10.7%	373
Lambert Elem	- 0.0%	2 0.4%	- 0.0%	- 0.0%	534 98.0%	1 0.2%	5 0.9%	3 0.6%	545
Loma Vista Elem	2 0.3%	27 4.6%	- 0.0%	4 0.7%	275 46.5%	7 1.2%	245 41.5%	31 5.2%	591
Myford Elem	- 0.0%	363 45.5%	2 0.3%	24 3.0%	48 6.0%	5 0.6%	256 32.1%	99 12.4%	797
Nelson Elem	1 0.2%	62 10.6%	3 0.5%	17 2.9%	329 56.1%	18 3.1%	125 21.3%	31 5.3%	586
Peters Canyon Elem	2 0.3%	157 25.4%	1 0.2%	19 3.1%	48 7.8%	8 1.3%	332 53.7%	51 8.3%	618
Redhill Elem	1 0.2%	21 4.1%	1 0.2%	5 1.0%	68 13.4%	4 0.8%	376 74.0%	32 6.3%	508
Thorman Elem	4 0.6%	22 3.0%	6 0.8%	6 0.8%	659 91.0%	15 2.1%	7 1.0%	5 0.7%	724
Tustin Memorial Elem	1 0.2%	131 21.6%	1 0.2%	7 1.2%	55 9.1%	6 1.0%	349 57.6%	56 9.2%	606
Tustin Ranch Elem	1 0.2%	158 27.5%	5 0.9%	22 3.8%	140 24.3%	17 3.0%	197 34.3%	35 6.1%	575
Veeh Elem	2 0.5%	40 9.3%	4 0.9%	4 0.9%	307 71.7%	20 4.7%	28 6.5%	23 5.4%	428
Columbus Tustin Middle	1 0.1%	45 4.9%	7 0.8%	17 1.8%	674 73.3%	16 1.7%	148 16.1%	12 1.3%	920
Currie Middle	5 0.7%	21 2.8%	7 0.9%	11 1.5%	659 87.7%	23 3.1%	25 3.3%	- 0.0%	751
Hewes Middle	2 0.2%	52 5.4%	2 0.2%	5 0.5%	186 19.3%	7 0.7%	674 69.9%	36 3.7%	964
Pioneer Middle	4 0.3%	545 39.4%	4 0.3%	26 1.9%	167 12.1%	28 2.0%	540 39.0%	71 5.1%	1,385
Utt Middle	3 0.3%	75 8.2%	7 0.8%	20 2.2%	475 52.0%	40 4.4%	264 28.9%	29 3.2%	913
Beckman HS	8 0.4%	639 28.8%	6 0.3%	59 2.7%	623 28.1%	70 3.2%	765 34.4%	51 2.3%	2,221
Foothill HS	11 0.5%	120 5.6%	16 0.7%	34 1.6%	634 29.3%	24 1.1%	1,262 58.4%	61 2.8%	2,162
Tustin HS	1 0.1%	145 7.3%	25 1.3%	60 3.0%	1,318 66.4%	75 3.8%	329 16.6%	33 1.7%	1,986
Sycamore HS (Alt)	- 0.0%	- 0.0%	- 0.0%	1 6.7%	7 46.7%	- 0.0%	5 33.3%	2 13.3%	15
Hillview HS (Cont)	1 0.6%	5 2.9%	1 0.6%	- 0.0%	134 77.5%	4 2.3%	25 14.5%	3 1.7%	173
NPS Students	- 0.0%	1 5.9%	- 0.0%	- 0.0%	4 23.5%	- 0.0%	12 70.6%	- 0.0%	17
* ADULTS (included at various High Schools)	0	2	0	0	1	0	0	0	3
TUSTIN UNIFIED TOTALS	64 0.3%	3,258 15.0%	120 0.6%	417 1.9%	9,186 42.4%	478 2.2%	7,275 33.5%	887 4.1%	21,685
UNIFIED DISTRICTS TOTALS	923 0.3%	44,628 13.3%	1,471 0.4%	5,088 1.5%	143,236 42.6%	4,881 1.5%	124,715 37.1%	11,437 3.4%	336,379

ORANGE COUNTY DEPARTMENT OF EDUCATION

PUPIL MEMBERSHIP COUNT AND PERCENTAGE

SCHOOL DISTRICT School Name	AMER IND ALASK NAT	ASIAN	PACIFIC ISLANDER	FILIPINO	HISPANIC	NOT OF HISPANIC ORIGIN		MULTIPLE NO RESP	TOTALS
						AFR AMER	WHITE		
COUNTY OPERATED PROGRAMS									
Juvenile Hall/Community	1 0.1%	37 3.0%	14 1.2%	4 0.3%	875 71.9%	44 3.6%	218 17.9%	24 2.0%	1,217
OC Comm Home Ed Prgm	8 0.6%	139 9.6%	4 0.3%	9 0.6%	170 11.7%	39 2.7%	844 58.2%	238 16.4%	1,451
Special Education	2 0.3%	71 12.1%	3 0.5%	10 1.7%	262 44.6%	21 3.6%	207 35.2%	12 2.0%	588
Access County Comm.	20 0.4%	148 3.0%	39 0.8%	21 0.4%	3,136 63.4%	187 3.8%	1,199 24.2%	198 4.0%	4,948
CO OPER PRGMS TOTALS	31 0.4%	395 4.8%	60 0.7%	44 0.5%	4,443 54.2%	291 3.5%	2,468 30.1%	472 5.8%	8,204
ORANGE COUNTYWIDE	2,481 0.5%	70,033 13.9%	2,774 0.5%	8,994 1.8%	225,665 44.7%	8,484 1.7%	165,529 32.8%	20,575 4.1%	504,535
* TOTAL ADULTS	3	63	2	7	162	5	126	1	369

* Total for Adults is for information only. The grand total already includes Adults in their proper ethnicity.

Orange County Department of Education
Racial and Ethnic Survey Fall 2008

PUPIL MEMBERSHIP
COMPARISONS
FALL 2007 TO FALL 2008



ORANGE COUNTY DEPARTMENT OF EDUCATION

PUPIL MEMBERSHIP COMPARISONS 2007 TO 2008

SCHOOL DISTRICT	SCHOOL YEAR	AMER IND ALASK NAT	ASIAN	PACIFIC ISLANDER	FILIPINO	HISPANIC	NOT OF HISPANIC ORIGIN		MULTIPLE NO RESP	TOTALS
							AFR AMER	WHITE		
ANAHEIM CITY	2008	56 0.3%	888 4.6%	114 0.6%	337 1.7%	16,306 84.6%	322 1.7%	998 5.2%	257 1.3%	19,278
	2007	55 0.3%	860 4.4%	111 0.6%	323 1.7%	16,401 84.8%	324 1.7%	1,069 5.5%	189 1.0%	19,332
Enrollment increase/(decrease)		1	28	3	14	(95)	(2)	(71)	68	(54)
Percent of Change 2007 to 2008		1.8%	3.3%	2.7%	4.3%	-0.6%	-0.6%	-6.6%	36.0%	
BUENA PARK	2008	17 0.3%	779 14.0%	38 0.7%	262 4.7%	3,238 58.1%	322 5.8%	612 11.0%	306 5.5%	5,574
	2007	13 0.2%	820 14.3%	40 0.7%	254 4.4%	3,296 57.3%	321 5.6%	689 12.0%	318 5.5%	5,751
Enrollment increase/(decrease)		4	(41)	(2)	8	(58)	1	(77)	(12)	(177)
Percent of Change 2007 to 2008		30.8%	-5.0%	-5.0%	3.1%	-1.8%	0.3%	-11.2%	-3.8%	
CENTRALIA	2008	12 0.3%	673 14.2%	32 0.7%	324 6.8%	2,085 43.9%	147 3.1%	772 16.2%	707 14.9%	4,752
	2007	18 0.4%	673 14.0%	45 0.9%	327 6.8%	2,086 43.4%	147 3.1%	853 17.7%	659 13.7%	4,808
Enrollment increase/(decrease)		(6)	0	(13)	(3)	(1)	0	(81)	48	(56)
Percent of Change 2007 to 2008		-33.3%	0.0%	-28.9%	-0.9%	0.0%	0.0%	-9.5%	7.3%	
CYPRESS	2008	17 0.4%	1,266 31.0%	36 0.9%	242 5.9%	965 23.6%	180 4.4%	1,286 31.5%	91 2.2%	4,083
	2007	23 0.6%	1,213 29.6%	32 0.8%	250 6.1%	937 22.9%	186 4.5%	1,379 33.6%	80 2.0%	4,100
Enrollment increase/(decrease)		(6)	53	4	(8)	28	(6)	(93)	11	(17)
Percent of Change 2007 to 2008		-26.1%	4.4%	12.5%	-3.2%	3.0%	-3.2%	-6.7%	13.8%	
FOUNTAIN VALLEY	2008	39 0.6%	1,790 29.1%	41 0.7%	97 1.6%	827 13.5%	52 0.8%	3,120 50.8%	179 2.9%	6,145
	2007	43 0.7%	1,674 27.3%	47 0.8%	87 1.4%	831 13.6%	68 1.1%	3,213 52.5%	160 2.6%	6,123
Enrollment increase/(decrease)		(4)	116	(6)	10	(4)	(16)	(93)	19	22
Percent of Change 2007 to 2008		-9.3%	6.9%	-12.8%	11.5%	-0.5%	-23.5%	-2.9%	11.9%	
FULLERTON	2008	37 0.3%	2,647 19.7%	48 0.4%	237 1.8%	6,115 45.4%	201 1.5%	3,273 24.3%	900 6.7%	13,458
	2007	28 0.2%	2,688 19.8%	50 0.4%	227 1.7%	6,255 46.0%	222 1.6%	3,331 24.5%	796 5.9%	13,597
Enrollment increase/(decrease)		9	(41)	(2)	10	(140)	(21)	(58)	104	(139)
Percent of Change 2007 to 2008		32.1%	-1.5%	-4.0%	4.4%	-2.2%	-9.5%	-1.7%	13.1%	
HUNTINGTON BEACH CITY	2008	46 0.7%	526 7.9%	32 0.5%	35 0.5%	664 9.9%	45 0.7%	4,489 67.2%	842 12.6%	6,679
	2007	53 0.8%	529 8.1%	34 0.5%	30 0.5%	696 10.6%	34 0.5%	4,396 67.0%	794 12.1%	6,566
Enrollment increase/(decrease)		(7)	(3)	(2)	5	(32)	11	93	48	113
Percent of Change 2007 to 2008		-13.2%	-0.6%	-5.9%	16.7%	-4.6%	32.4%	2.1%	6.0%	

ORANGE COUNTY DEPARTMENT OF EDUCATION

PUPIL MEMBERSHIP COMPARISONS 2007 TO 2008

SCHOOL DISTRICT	SCHOOL YEAR	AMER IND ALASK NAT	ASIAN	PACIFIC ISLANDER	FILIPINO	HISPANIC	NOT OF HISPANIC ORIGIN		MULTIPLE NO RESP	TOTALS
							AFR AMER	WHITE		
LA HABRA CITY	2008	9 0.2%	89 1.6%	10 0.2%	46 0.8%	4,274 75.9%	45 0.8%	727 12.9%	433 7.7%	5,633
	2007	11 0.2%	91 1.6%	8 0.1%	55 1.0%	4,339 75.5%	57 1.0%	822 14.3%	363 6.3%	5,746
Enrollment increase/(decrease)		(2)	(2)	2	(9)	(65)	(12)	(95)	70	(113)
Percent of Change 2007 to 2008		-18.2%	-2.2%	25.0%	-16.4%	-1.5%	-21.1%	-11.6%	19.3%	
MAGNOLIA	2008	10 0.2%	678 10.7%	74 1.2%	164 2.6%	4,260 67.4%	198 3.1%	660 10.4%	273 4.3%	6,317
	2007	16 0.3%	674 10.6%	85 1.3%	165 2.6%	4,335 68.4%	178 2.8%	690 10.9%	198 3.1%	6,341
Enrollment increase/(decrease)		(6)	4	(11)	(1)	(75)	20	(30)	75	(24)
Percent of Change 2007 to 2008		-37.5%	-0.6%	-12.9%	-0.6%	-1.7%	11.2%	-4.3%	37.9%	
OCEAN VIEW	2008	40 0.4%	1,098 11.6%	43 0.5%	96 1.0%	2,822 29.7%	91 1.0%	4,275 45.0%	1,038 10.9%	9,503
	2007	40 0.4%	1,069 11.4%	30 0.3%	94 1.0%	2,735 29.1%	77 0.8%	4,394 46.7%	973 10.3%	9,412
Enrollment increase/(decrease)		0	29	13	2	87	14	(119)	65	91
Percent of Change 2007 to 2008		0.0%	2.7%	43.3%	2.1%	3.2%	18.2%	-2.7%	6.7%	
SAVANNA	2008	13 0.5%	322 13.0%	38 1.5%	135 5.5%	1,333 53.9%	121 4.9%	432 17.5%	79 3.2%	2,473
	2007	9 0.4%	291 12.2%	37 1.5%	136 5.7%	1,316 55.1%	111 4.6%	419 17.5%	69 2.9%	2,388
Enrollment increase/(decrease)		4	31	1	(1)	17	10	13	10	85
Percent of Change 2007 to 2008		44.4%	10.7%	2.7%	-0.7%	1.3%	9.0%	3.1%	14.5%	
WESTMINSTER	2008	32 0.3%	3,823 38.7%	62 0.6%	69 0.7%	3,696 37.4%	83 0.8%	1,484 15.0%	630 6.4%	9,879
	2007	37 0.4%	3,750 37.8%	95 1.0%	70 0.7%	3,728 37.5%	118 1.2%	1,589 16.0%	542 5.5%	9,929
Enrollment increase/(decrease)		(5)	73	(33)	(1)	(32)	(35)	(105)	88	(50)
Percent of Change 2007 to 2008		-13.5%	1.9%	-34.7%	-1.4%	-0.9%	-29.7%	-6.6%	16.2%	
ANAHEIM UNION HIGH	2008	78 0.2%	3,765 11.2%	463 1.4%	1,169 3.5%	19,952 59.2%	966 2.9%	5,187 15.4%	2,130 6.3%	33,710
	2007	73 0.2%	3,600 10.8%	527 1.6%	1,098 3.3%	19,155 57.4%	899 2.7%	5,392 16.2%	2,624 7.9%	33,368
Enrollment increase/(decrease)		5	165	(64)	71	797	67	(205)	(494)	342
Percent of Change 2007 to 2008		6.8%	4.6%	-12.1%	6.5%	4.2%	7.5%	-3.8%	-18.8%	
* FULLERTON JOINT UNION HIGH	2008	27 0.2%	2,883 20.4%	43 0.3%	429 3.0%	6,156 43.6%	311 2.2%	3,551 25.2%	709 5.0%	14,109
	2007	26 0.2%	2,841 20.1%	42 0.3%	410 2.9%	5,892 41.7%	344 2.4%	3,731 26.4%	830 5.9%	14,116
Enrollment increase/(decrease)		1	42	1	19	264	(33)	(180)	(121)	(7)
Percent of Change 2007 to 2008		3.8%	1.5%	2.4%	4.6%	4.5%	-9.6%	-4.8%	-14.6%	
* EXCLUDES LA SIERRA ALTERNATIVE HIGH SCHOOL STUDENT ENROLLMENT COUNT OF 2,234										

ORANGE COUNTY DEPARTMENT OF EDUCATION

PUPIL MEMBERSHIP COMPARISONS 2007 TO 2008

SCHOOL DISTRICT	SCHOOL YEAR	AMER IND ALASK NAT	ASIAN	PACIFIC ISLANDER	FILIPINO	HISPANIC	NOT OF HISPANIC ORIGIN		MULTIPLE NO RESP	TOTALS
							AFR AMER	WHITE		
HUNTINGTON BEACH UNION HIGH	2008	1,092 6.8%	3,625 22.5%	165 1.0%	214 1.3%	3,504 21.7%	203 1.3%	7,268 45.1%	54 0.3%	16,125
	2007	1,128 7.0%	3,491 21.7%	179 1.1%	224 1.4%	3,371 21.0%	211 1.3%	7,391 46.0%	57 0.4%	16,052
Enrollment increase/(decrease)		(36)	134	(14)	(10)	133	(8)	(123)	(3)	73
Percent of Change 2007 to 2008		-3.2%	3.8%	-7.8%	-4.5%	3.9%	-3.8%	-1.7%	-5.3%	
BREA-OLINDA UNIFIED	2008	16 0.3%	1,042 17.5%	20 0.3%	134 2.3%	1,529 25.7%	110 1.8%	2,730 45.9%	365 6.1%	5,946
	2007	18 0.3%	1,009 16.7%	20 0.3%	137 2.3%	1,546 25.6%	96 1.6%	2,883 47.8%	324 5.4%	6,033
Enrollment increase/(decrease)		(2)	33	0	(3)	(17)	14	(153)	41	(87)
Percent of Change 2007 to 2008		-11.1%	3.3%	0.0%	-2.2%	-1.1%	14.6%	-5.3%	12.7%	
CAPISTRANO UNIFIED	2008	152 0.3%	2,756 5.2%	115 0.2%	822 1.6%	9,877 18.7%	711 1.3%	34,261 64.9%	4,079 7.7%	52,773
	2007	148 0.3%	2,650 5.1%	110 0.2%	806 1.5%	9,570 18.3%	675 1.3%	34,746 66.4%	3,651 7.0%	52,356
Enrollment increase/(decrease)		4	106	5	16	307	36	(485)	428	417
Percent of Change 2007 to 2008		2.7%	4.0%	4.5%	2.0%	3.2%	5.3%	-1.4%	11.7%	
GARDEN GROVE UNIFIED	2008	110 0.2%	15,016 30.7%	431 0.9%	604 1.2%	26,073 53.4%	455 0.9%	6,095 12.5%	60 0.1%	48,844
	2007	107 0.2%	14,490 29.8%	474 1.0%	602 1.2%	26,144 53.7%	449 0.9%	6,427 13.2%	12 0.0%	48,705
Enrollment increase/(decrease)		3	526	(43)	2	(71)	6	(332)	48	139
Percent of Change 2007 to 2008		2.8%	3.6%	-9.1%	0.3%	-0.3%	1.3%	-5.2%	400.0%	
IRVINE UNIFIED	2008	149 0.6%	10,995 41.4%	96 0.4%	698 2.6%	2,075 7.8%	578 2.2%	10,091 38.0%	1,848 7.0%	26,530
	2007	165 0.6%	10,681 40.9%	94 0.4%	669 2.6%	2,040 7.8%	555 2.1%	10,346 39.6%	1,584 6.1%	26,134
Enrollment increase/(decrease)		(16)	314	2	29	35	23	(255)	264	396
Percent of Change 2007 to 2008		-9.7%	2.9%	2.1%	4.3%	1.7%	4.1%	-2.5%	16.7%	
LAGUNA BEACH UNIFIED	2008	14 0.5%	102 3.5%	11 0.4%	8 0.3%	230 7.8%	34 1.2%	2,438 82.7%	110 3.7%	2,947
	2007	18 0.6%	91 3.1%	9 0.3%	9 0.3%	216 7.5%	29 1.0%	2,416 83.5%	105 3.6%	2,893
Enrollment increase/(decrease)		(4)	11	2	(1)	14	5	22	5	54
Percent of Change 2007 to 2008		-22.2%	12.1%	22.2%	-11.1%	6.5%	17.2%	0.9%	4.8%	
LOS ALAMITOS UNIFIED	2008	30 0.3%	968 10.2%	58 0.6%	230 2.4%	1,233 13.0%	306 3.2%	5,812 61.3%	838 8.8%	9,475
	2007	32 0.3%	952 10.2%	55 0.6%	218 2.3%	1,227 13.1%	305 3.3%	5,880 62.7%	703 7.5%	9,372
Enrollment increase/(decrease)		(2)	16	3	12	6	1	(68)	135	103
Percent of Change 2007 to 2008		-6.3%	1.7%	5.5%	5.5%	0.5%	0.3%	-1.2%	19.2%	

ORANGE COUNTY DEPARTMENT OF EDUCATION

PUPIL MEMBERSHIP COMPARISONS 2007 TO 2008

SCHOOL DISTRICT	SCHOOL YEAR	AMER IND ALASK NAT	ASIAN	PACIFIC ISLANDER	FILIPINO	HISPANIC	NOT OF HISPANIC ORIGIN		MULTIPLE NO RESP	TOTALS
							AFR AMER	WHITE		
NEWPORT-MESA UNIFIED	2008	62 0.3%	953 4.4%	159 0.7%	209 1.0%	9,012 41.9%	300 1.4%	10,793 50.2%	19 0.1%	21,507
	2007	64 0.3%	965 4.5%	141 0.7%	200 0.9%	8,788 41.2%	276 1.3%	10,909 51.1%	- 0.0%	21,343
Enrollment increase/(decrease)		(2)	(12)	18	9	224	24	(116)	19.00	164
Percent of Change 2007 to 2008		-3.1%	-1.2%	12.8%	4.5%	2.5%	8.7%	-1.1%	0.0%	
ORANGE UNIFIED	2008	141 0.5%	2,971 9.8%	166 0.6%	524 1.7%	13,914 46.1%	427 1.4%	10,758 35.7%	1,269 4.2%	30,170
	2007	156 0.5%	2,931 9.7%	175 0.6%	508 1.7%	13,627 45.2%	447 1.5%	11,109 36.9%	1,179 3.9%	30,132
Enrollment increase/(decrease)		(15)	40	(9)	16	287	(20)	(351)	90	38
Percent of Change 2007 to 2008		-9.6%	1.4%	-5.1%	3.1%	2.1%	-4.5%	-3.2%	8%	
PLACENTIA-YORBA LINDA UNIFIED	2008	45 0.2%	2,610 10.0%	69 0.3%	318 1.2%	8,811 33.7%	469 1.8%	13,068 50.0%	736 2.8%	26,126
	2007	57 0.2%	2,568 9.8%	67 0.3%	294 1.1%	8,561 32.6%	492 1.9%	13,782 52.4%	475 1.8%	26,296
Enrollment increase/(decrease)		(12)	42	2	24	250	(23)	(714)	261	(170)
Percent of Change 2007 to 2008		-21.1%	1.6%	3.0%	8.2%	2.9%	-4.7%	-5.2%	54.9%	
SADDLEBACK VALLEY UNIFIED	2008	99 0.3%	2,431 7.4%	122 0.4%	997 3.0%	8,207 24.9%	657 2.0%	19,621 59.6%	802 2.4%	32,936
	2007	117 0.3%	2,470 7.4%	125 0.4%	972 2.9%	8,246 24.6%	685 2.0%	20,550 61.2%	393 1.2%	33,558
Enrollment increase/(decrease)		(18)	(39)	(3)	25	-39	(28)	(929)	409	(622)
Percent of Change 2007 to 2008		-15.4%	-1.6%	-2.4%	2.6%	-0.5%	-4.1%	-4.5%	104.1%	
SANTA ANA UNIFIED	2008	41 0.1%	1,526 2.7%	104 0.2%	127 0.2%	53,089 92.4%	356 0.6%	1,773 3.1%	424 0.7%	57,440
	2007	40 0.1%	1,524 2.7%	116 0.2%	149 0.3%	52,646 92.3%	414 0.7%	1,873 3.3%	299 0.5%	57,061
Enrollment increase/(decrease)		1	2	(12)	(22)	443	(58)	(100)	125	379
Percent of Change 2007 to 2008		2.5%	0.1%	-10.3%	-14.8%	0.8%	-14.0%	-5.3%	41.8%	
TUSTIN UNIFIED	2008	64 0.3%	3,258 15.0%	120 0.6%	417 1.9%	9,186 42.4%	478 2.2%	7,275 33.5%	887 4.1%	21,685
	2007	62 0.3%	3,055 14.6%	115 0.6%	390 1.9%	8,785 42.1%	510 2.4%	7,212 34.5%	751 3.6%	20,880
Enrollment increase/(decrease)		2	203	5	27	401	(32)	63	136	805
Percent of Change 2007 to 2008		3.2%	6.6%	4.3%	6.9%	4.6%	-6.3%	0.9%	18.1%	
COUNTY OPERATED PROGRAMS	2008	31 0.4%	395 4.8%	60 0.7%	44 0.5%	4,443 54.2%	291 3.5%	2,468 30.1%	472 5.8%	8,204
	2007	30 0.3%	404 4.7%	76 0.9%	59 0.7%	4,652 53.7%	321 3.7%	2,633 30.4%	496 5.7%	8,671
Enrollment increase/(decrease)		1	(9)	(16)	(15)	(209)	(30)	(165)	(24)	(467)
Percent of Change 2007 to 2008		3.3%	-2.2%	-21.1%	-25.4%	-4.5%	-9.3%	-6.3%	-4.8%	

ORANGE COUNTY DEPARTMENT OF EDUCATION

PUPIL MEMBERSHIP COMPARISONS 2007 TO 2008

SCHOOL DISTRICT	SCHOOL YEAR	AMER IND ALASK NAT	ASIAN	PACIFIC ISLANDER	FILIPINO	HISPANIC	NOT OF HISPANIC ORIGIN		MULTIPLE NO RESP	TOTALS
							AFR AMER	WHITE		
ORANGE COUNTY TOTALS	2008	2,481 0.5%	70,033 13.9%	2,774 0.5%	8,994 1.8%	225,665 44.7%	8,484 1.7%	165,529 32.8%	20,575 4.1%	504,535
	2007	2,587 0.5%	68,210 13.6%	2,945 0.6%	8,771 1.7%	223,237 44.4%	8,566 1.7%	170,320 33.8%	18,645 3.7%	503,281
Enrollment increase/(decrease)		(106)	1,823	(171)	223	2,428	(82)	(4,791)	1,930	1,254
Percent of Change 2007 to 2008		-4.1%	2.7%	-5.8%	2.5%	1.1%	-1.0%	-2.8%	10.4%	

* Grand Total includes enrollment for La Sierra Alternative High School (FJUHS).

Orange County Department of Education
Racial and Ethnic Survey Fall 2008

ETHNIC RECAP
BY
GRADE LEVEL



ORANGE COUNTY DEPARTMENT OF EDUCATION

ETHNIC RECAP BY GRADE LEVEL

SCHOOL DISTRICT	AMER IND ALASK NAT	ASIAN	PACIFIC ISLANDER	FILIPINO	HISPANIC	NOT OF HISPANIC ORIGIN		MULTIPLE NO RESP	TOTALS
						AFR AMER	WHITE		
<u>ANAHEIM CITY</u>									
KINDERGARTEN	7	131	15	46	2,235	40	135	52	2,661
GRADE 1	5	109	11	36	2,339	33	122	70	2,725
GRADE 2	9	147	14	41	2,364	52	122	34	2,783
GRADE 3	10	132	24	58	2,470	55	169	29	2,947
GRADE 4	8	116	21	52	2,258	45	132	28	2,660
GRADE 5	8	120	12	53	2,347	60	151	26	2,777
GRADE 6	9	133	17	51	2,293	37	167	18	2,725
UNGRADED ELEMENTARY	-	-	-	-	-	-	-	-	-
TOTALS	56	888	114	337	16,306	322	998	257	19,278
<u>BUENA PARK</u>									
KINDERGARTEN	3	82	5	27	336	35	61	33	582
GRADE 1	-	75	4	32	369	25	63	39	607
GRADE 2	-	110	3	21	374	38	74	44	664
GRADE 3	3	98	9	20	356	38	57	37	618
GRADE 4	-	106	8	36	357	33	65	36	641
GRADE 5	5	87	3	34	349	34	63	43	618
GRADE 6	3	88	2	35	343	42	76	33	622
GRADE 7	2	74	2	31	384	42	76	24	635
GRADE 8	1	59	2	26	370	35	77	17	587
UNGRADED ELEMENTARY	-	-	-	-	-	-	-	-	-
TOTALS	17	779	38	262	3,238	322	612	306	5,574
<u>CENTRALIA</u>									
KINDERGARTEN	1	63	-	40	270	18	92	104	588
GRADE 1	1	96	2	46	306	20	96	123	690
GRADE 2	-	89	5	35	309	12	112	113	675
GRADE 3	2	100	7	57	285	28	113	90	682
GRADE 4	3	93	7	38	321	25	112	102	701
GRADE 5	-	107	4	54	278	26	96	88	653
GRADE 6	5	125	7	54	316	18	151	87	763
UNGRADED ELEMENTARY	-	-	-	-	-	-	-	-	-
TOTALS	12	673	32	324	2,085	147	772	707	4,752
<u>CYPRESS</u>									
KINDERGARTEN	-	148	5	26	134	27	167	21	528
GRADE 1	1	148	4	23	130	18	162	14	500
GRADE 2	4	178	4	35	129	23	188	10	571
GRADE 3	3	176	7	43	124	18	167	17	555
GRADE 4	1	188	7	37	144	29	182	10	598
GRADE 5	4	212	6	37	148	27	201	14	649
GRADE 6	4	216	3	41	156	38	219	5	682
UNGRADED ELEMENTARY	-	-	-	-	-	-	-	-	-
TOTALS	17	1,266	36	242	965	180	1,286	91	4,083
<u>FOUNTAIN VALLEY</u>									
KINDERGARTEN	3	175	3	15	88	5	278	14	581
GRADE 1	1	166	3	10	75	4	343	29	631
GRADE 2	4	160	8	8	81	5	307	36	609
GRADE 3	4	231	4	12	89	7	315	21	683
GRADE 4	5	198	3	8	88	6	338	25	671
GRADE 5	4	193	6	7	86	5	364	13	678
GRADE 6	6	215	3	19	88	3	375	19	728

ORANGE COUNTY DEPARTMENT OF EDUCATION

ETHNIC RECAP BY GRADE LEVEL

SCHOOL DISTRICT	AMER IND ALASK NAT	ASIAN	PACIFIC ISLANDER	FILIPINO	HISPANIC	NOT OF HISPANIC ORIGIN		MULTIPLE NO RESP	TOTALS
						AFR AMER	WHITE		
GRADE 7	8	245	6	9	109	5	405	15	802
GRADE 8	4	207	5	9	123	12	395	7	762
UNGRADED ELEMENTARY	-	-	-	-	-	-	-	-	-
TOTALS	39	1,790	41	97	827	52	3,120	179	6,145
<u>FULLERTON</u>									
KINDERGARTEN	6	189	3	17	656	12	287	158	1,328
GRADE 1	3	253	4	19	635	21	317	150	1,402
GRADE 2	1	271	5	25	694	22	315	125	1,458
GRADE 3	5	296	5	30	654	27	340	134	1,491
GRADE 4	7	261	8	30	686	21	353	102	1,468
GRADE 5	6	321	2	34	670	23	376	63	1,495
GRADE 6	1	312	8	27	704	26	401	52	1,531
GRADE 7	3	367	6	33	707	24	474	44	1,658
GRADE 8	5	377	7	22	709	25	410	72	1,627
UNGRADED ELEMENTARY	-	-	-	-	-	-	-	-	-
TOTALS	37	2,647	48	237	6,115	201	3,273	900	13,458
<u>HUNTINGTON BEACH CITY</u>									
KINDERGARTEN	4	54	1	5	51	3	525	119	762
GRADE 1	7	63	6	4	57	3	454	81	675
GRADE 2	2	65	2	2	60	4	524	83	742
GRADE 3	6	54	5	3	82	6	409	97	662
GRADE 4	7	54	1	-	78	5	480	90	715
GRADE 5	3	52	3	4	56	8	480	103	709
GRADE 6	4	68	4	1	84	5	514	86	766
GRADE 7	8	56	4	10	89	6	518	107	798
GRADE 8	5	60	6	6	107	5	585	76	850
UNGRADED ELEMENTARY	-	-	-	-	-	-	-	-	-
TOTALS	46	526	32	35	664	45	4,489	842	6,679
<u>LA HABRA CITY</u>									
KINDERGARTEN	1	9	1	1	479	4	59	77	631
GRADE 1	2	11	1	2	464	4	43	81	608
GRADE 2	1	8	1	6	412	7	59	83	577
GRADE 3	1	7	1	5	483	9	81	68	655
GRADE 4	2	8	1	7	477	2	103	46	646
GRADE 5	-	8	2	4	478	4	87	22	605
GRADE 6	-	6	1	5	504	3	84	15	618
GRADE 7	1	19	2	6	485	4	105	23	645
GRADE 8	1	13	-	10	492	8	106	18	648
UNGRADED ELEMENTARY	-	-	-	-	-	-	-	-	-
TOTALS	9	89	10	46	4,274	45	727	433	5,633
<u>MAGNOLIA</u>									
KINDERGARTEN	-	107	10	21	637	16	91	62	944
GRADE 1	3	81	11	17	592	25	82	43	854
GRADE 2	-	113	10	27	610	22	78	34	894
GRADE 3	3	110	7	30	625	31	94	48	948
GRADE 4	2	81	11	28	589	33	96	41	881
GRADE 5	2	98	12	20	619	29	107	33	920
GRADE 6	-	88	13	21	588	42	112	12	876
UNGRADED ELEMENTARY	-	-	-	-	-	-	-	-	-
TOTALS	10	678	74	164	4,260	198	660	273	6,317

ORANGE COUNTY DEPARTMENT OF EDUCATION

ETHNIC RECAP BY GRADE LEVEL

SCHOOL DISTRICT	AMER IND ALASK NAT	ASIAN	PACIFIC ISLANDER	FILIPINO	HISPANIC	NOT OF HISPANIC ORIGIN		MULTIPLE NO RESP	TOTALS
						AFR AMER	WHITE		
<u>OCEAN VIEW</u>									
KINDERGARTEN	2	139	7	15	414	19	522	163	1,281
GRADE 1	1	108	6	13	319	10	395	130	982
GRADE 2	-	116	3	11	305	7	409	116	967
GRADE 3	4	108	1	13	298	5	461	117	1,007
GRADE 4	7	129	6	6	290	9	438	109	994
GRADE 5	6	113	4	11	293	7	479	112	1,025
GRADE 6	8	116	6	10	288	11	460	134	1,033
GRADE 7	3	145	4	8	305	12	558	98	1,133
GRADE 8	9	124	6	9	310	11	553	59	1,081
UNGRADED ELEMENTARY									-
TOTALS	40	1,098	43	96	2,822	91	4,275	1,038	9,503
<u>SAVANNA</u>									
KINDERGARTEN	2	55	4	9	171	23	51	12	327
GRADE 1	3	45	5	19	190	14	66	15	357
GRADE 2	1	39	6	20	196	11	54	12	339
GRADE 3	3	46	3	21	188	18	58	13	350
GRADE 4	1	49	2	21	217	22	55	11	378
GRADE 5	1	53	12	18	194	15	84	5	382
GRADE 6	2	35	6	27	177	18	64	11	340
UNGRADED ELEMENTARY	-	-	-	-	-	-	-	-	-
TOTALS	13	322	38	135	1,333	121	432	79	2,473
<u>WESTMINSTER</u>									
KINDERGARTEN	3	497	8	8	375	2	159	101	1,153
GRADE 1	1	474	3	11	433	9	160	101	1,192
GRADE 2	2	430	5	9	437	7	159	71	1,120
GRADE 3	1	476	14	7	447	8	159	70	1,182
GRADE 4	5	383	5	6	411	12	163	60	1,045
GRADE 5	6	363	4	7	408	15	169	66	1,038
GRADE 6	6	380	10	5	403	6	194	61	1,065
GRADE 7	3	424	5	10	377	12	149	51	1,031
GRADE 8	5	396	8	6	405	12	172	49	1,053
UNGRADED ELEMENTARY	-	-	-	-	-	-	-	-	-
TOTALS	32	3,823	62	69	3,696	83	1,484	630	9,879
<u>ANAHEIM UNION HIGH</u>									
GRADE 7	24	631	48	217	3,630	168	743	71	5,532
GRADE 8	7	598	62	156	3,439	141	736	460	5,599
UNGRADED ELEMENTARY	-	-	-	-	-	-	-	-	-
GRADE 9	7	660	71	213	3,839	182	826	465	6,263
GRADE 10	10	631	97	184	3,268	150	907	382	5,629
GRADE 11	15	637	90	180	3,044	156	982	373	5,477
GRADE 12	15	602	90	215	2,680	163	963	367	5,095
UNGRADED SECONDARY	-	6	5	4	52	6	30	12	115
TOTALS	78	3,765	463	1,169	19,952	966	5,187	2,130	33,710
<u>* FULLERTON JOINT UNION HIGH</u>									
GRADE 9	9	705	12	109	2,108	96	1,000	176	4,215
GRADE 10	2	693	7	95	1,168	58	738	172	2,933
GRADE 11	8	735	9	108	1,792	96	1,013	196	3,957
GRADE 12	8	750	15	117	1,088	61	800	165	3,004
UNGRADED SECONDARY	-	-	-	-	-	-	-	-	-
TOTALS	27	2,883	43	429	6,156	311	3,551	709	14,109
* EXCLUDES LA SIERRA ALTERNATIVE HIGH SCHOOL STUDENT ENROLLMENT COUNT OF 2,234									

ORANGE COUNTY DEPARTMENT OF EDUCATION

ETHNIC RECAP BY GRADE LEVEL

SCHOOL DISTRICT	AMER IND ALASK NAT	ASIAN	PACIFIC ISLANDER	FILIPINO	HISPANIC	NOT OF HISPANIC ORIGIN		MULTIPLE NO RESP	TOTALS
						AFR AMER	WHITE		
<u>HUNTINGTON BEACH UNION HIGH</u>									
GRADE 9	256	947	36	49	914	40	1,792	20	4,054
GRADE 10	219	891	42	43	920	64	1,838	13	4,030
GRADE 11	309	876	40	56	882	47	1,809	10	4,029
GRADE 12	304	894	47	63	776	51	1,787	11	3,933
UNGRADED SECONDARY	4	17	-	3	12	1	42	-	79
TOTALS	1,092	3,625	165	214	3,504	203	7,268	54	16,125
<u>BREA-OLINDA UNIFIED</u>									
KINDERGARTEN	-	56	1	8	110	8	160	41	384
GRADE 1	2	57	1	8	114	7	158	42	389
GRADE 2	-	91	-	12	90	8	143	49	393
GRADE 3	-	69	2	9	113	8	157	32	390
GRADE 4	1	69	3	12	102	8	176	28	399
GRADE 5	1	63	3	5	124	8	177	36	417
GRADE 6	2	77	4	14	131	6	201	33	468
GRADE 7	2	97	-	6	121	8	217	21	472
GRADE 8	3	97	2	12	124	7	231	18	494
UNGRADED ELEMENTARY	-	-	-	-	-	-	1	-	1
GRADE 9	1	98	-	12	124	11	283	20	549
GRADE 10	1	85	1	13	122	8	251	17	498
GRADE 11	2	84	1	14	132	14	276	9	532
GRADE 12	1	99	2	9	121	9	298	19	558
UNGRADED SECONDARY	-	-	-	-	-	-	-	-	-
TOTALS	16	1,042	20	134	1,528	110	2,729	365	5,944
ADULTS	-	-	-	-	1	-	1	-	2
<u>CAPISTRANO UNIFIED</u>									
KINDERGARTEN	6	163	4	50	789	41	2,276	492	3,821
GRADE 1	6	182	7	59	764	42	2,334	450	3,844
GRADE 2	10	197	6	54	738	39	2,495	455	3,994
GRADE 3	9	208	5	57	744	45	2,562	440	4,070
GRADE 4	10	191	7	49	740	51	2,574	447	4,069
GRADE 5	11	218	10	61	764	54	2,521	395	4,034
GRADE 6	4	203	14	62	779	54	2,714	334	4,164
GRADE 7	15	219	10	78	811	58	2,648	224	4,063
GRADE 8	11	225	11	69	773	65	2,729	190	4,073
UNGRADED ELEMENTARY	-	-	-	-	-	-	-	-	-
GRADE 9	11	241	11	82	774	72	2,791	163	4,145
GRADE 10	24	230	9	68	826	69	3,017	209	4,452
GRADE 11	16	234	9	68	740	67	2,808	156	4,098
GRADE 12	18	239	12	63	619	53	2,726	123	3,853
UNGRADED SECONDARY	-	-	-	-	-	-	-	-	-
TOTALS	151	2,750	115	820	9,861	710	34,195	4,078	52,680
ADULTS	1	6	-	2	16	1	66	1	93
<u>GARDEN GROVE UNIFIED</u>									
KINDERGARTEN	7	1,222	25	30	2,017	31	391	9	3,732
GRADE 1	12	1,066	34	47	1,929	40	319	1	3,448
GRADE 2	3	1,148	35	42	2,007	26	327	5	3,593
GRADE 3	3	1,197	24	48	2,000	35	384	3	3,694
GRADE 4	5	1,105	38	35	2,065	32	399	5	3,684
GRADE 5	8	993	40	49	2,057	37	407	3	3,594

ORANGE COUNTY DEPARTMENT OF EDUCATION

ETHNIC RECAP BY GRADE LEVEL

SCHOOL DISTRICT	AMER IND ALASK NAT	ASIAN	PACIFIC ISLANDER	FILIPINO	HISPANIC	NOT OF HISPANIC ORIGIN		MULTIPLE NO RESP	TOTALS
						AFR AMER	WHITE		
GRADE 6	16	1,173	34	38	2,119	30	447	2	3,859
GRADE 7	5	1,141	37	46	2,110	44	478	4	3,865
GRADE 8	10	1,230	26	57	2,107	33	519	6	3,988
UNGRADED ELEMENTARY	-	-	-	-	-	-	-	-	-
GRADE 9	13	1,177	42	46	2,131	43	555	6	4,013
GRADE 10	8	1,204	36	73	2,074	37	601	3	4,036
GRADE 11	11	1,160	27	50	1,679	35	599	9	3,570
GRADE 12	7	1,149	31	39	1,643	30	623	4	3,526
UNGRADED SECONDARY	-	-	-	-	-	-	-	-	-
TOTALS	108	14,965	429	600	25,938	453	6,049	60	48,602
ADULTS	2	51	2	4	135	2	46	-	242
<u>IRVINE UNIFIED</u>									
KINDERGARTEN	6	691	9	42	132	31	641	188	1,740
GRADE 1	14	799	8	47	143	31	624	210	1,876
GRADE 2	9	805	9	53	135	36	644	192	1,883
GRADE 3	18	881	6	47	163	43	630	196	1,984
GRADE 4	6	786	3	55	148	46	709	183	1,936
GRADE 5	9	869	9	58	169	38	719	160	2,031
GRADE 6	17	859	4	76	150	37	772	161	2,076
GRADE 7	18	868	6	61	163	42	768	141	2,067
GRADE 8	9	892	6	53	184	61	817	96	2,118
UNGRADED ELEMENTARY	-	-	-	-	-	-	-	-	-
GRADE 9	15	881	7	58	186	59	864	113	2,183
GRADE 10	9	863	9	62	173	50	921	80	2,167
GRADE 11	11	917	14	46	160	56	950	73	2,227
GRADE 12	8	884	6	40	169	48	1,032	55	2,242
UNGRADED SECONDARY	-	-	-	-	-	-	-	-	-
TOTALS	149	10,995	96	698	2,075	578	10,091	1,848	26,530
<u>LAGUNA BEACH UNIFIED</u>									
KINDERGARTEN	-	8	1	1	15	4	135	5	169
GRADE 1	-	7	1	1	14	2	163	10	198
GRADE 2	1	11	2	-	23	4	168	8	217
GRADE 3	2	8	2	1	17	2	169	8	209
GRADE 4	2	6	-	1	12	2	180	4	207
GRADE 5	-	5	2	-	16	1	187	3	214
GRADE 6	-	3	-	-	10	2	184	5	204
GRADE 7	1	13	-	2	21	3	190	9	239
GRADE 8	2	7	-	-	22	3	191	4	229
UNGRADED ELEMENTARY	-	-	-	-	-	-	-	-	-
GRADE 9	1	12	1	-	23	3	207	14	261
GRADE 10	2	7	-	-	15	1	211	8	244
GRADE 11	-	8	1	-	22	3	214	18	266
GRADE 12	3	7	1	2	20	4	239	14	290
UNGRADED SECONDARY	-	-	-	-	-	-	-	-	-
TOTALS	14	102	11	8	230	34	2,438	110	2,947
<u>LOS ALAMITOS UNIFIED</u>									
KINDERGARTEN	2	71	4	17	87	17	416	78	692
GRADE 1	3	56	-	16	87	18	314	60	554
GRADE 2	-	53	3	15	81	17	337	78	584
GRADE 3	3	72	3	24	94	20	369	73	658
GRADE 4	4	62	3	20	102	24	374	72	661
GRADE 5	1	51	7	17	67	18	422	109	692

ORANGE COUNTY DEPARTMENT OF EDUCATION

ETHNIC RECAP BY GRADE LEVEL

SCHOOL DISTRICT	AMER IND ALASK NAT	ASIAN	PACIFIC ISLANDER	FILIPINO	HISPANIC	NOT OF HISPANIC ORIGIN		MULTIPLE NO RESP	TOTALS
						AFR AMER	WHITE		
GRADE 6	-	63	3	16	92	20	412	63	669
GRADE 7	5	88	6	24	96	27	470	62	778
GRADE 8	5	90	2	18	120	26	519	61	841
UNGRADED ELEMENTARY	-	-	-	-	-	-	-	-	-
GRADE 9	2	95	5	18	106	29	540	55	850
GRADE 10	3	99	6	21	105	39	527	57	857
GRADE 11	2	85	12	12	97	25	549	36	818
GRADE 12	-	83	4	12	99	26	563	34	821
UNGRADED SECONDARY	-	-	-	-	-	-	-	-	-
TOTALS	30	968	58	230	1,233	306	5,812	838	9,475
<u>NEWPORT-MESA UNIFIED</u>									
KINDERGARTEN	3	60	18	7	691	13	747	3	1,542
GRADE 1	4	66	9	23	696	33	797	1	1,629
GRADE 2	3	74	9	16	669	18	724	3	1,516
GRADE 3	8	67	8	17	675	18	690	1	1,484
GRADE 4	3	70	11	16	718	28	821	-	1,667
GRADE 5	7	61	16	18	685	15	753	3	1,558
GRADE 6	3	71	13	16	687	28	720	1	1,539
GRADE 7	4	69	14	12	665	25	696	1	1,486
GRADE 8	5	70	9	16	674	29	782	2	1,587
UNGRADED ELEMENTARY	2	26	5	4	248	7	176	2	470
GRADE 9	5	64	15	9	684	19	946	2	1,744
GRADE 10	5	77	9	22	658	27	924	-	1,722
GRADE 11	3	89	17	14	593	15	934	-	1,665
GRADE 12	6	82	5	15	533	19	963	-	1,623
UNGRADED SECONDARY	1	7	1	4	136	6	120	-	275
TOTALS	62	953	159	209	9,012	300	10,793	19	21,507
<u>ORANGE UNIFIED</u>									
KINDERGARTEN	6	192	8	40	1,105	17	615	102	2,085
GRADE 1	7	190	7	40	1,133	26	651	131	2,185
GRADE 2	4	196	8	47	1,067	31	685	130	2,168
GRADE 3	7	224	9	39	1,069	37	719	157	2,261
GRADE 4	7	227	12	44	1,101	34	738	124	2,287
GRADE 5	11	181	14	45	995	28	717	134	2,125
GRADE 6	8	239	12	35	1,019	24	784	122	2,243
GRADE 7	14	257	17	36	1,042	38	800	92	2,296
GRADE 8	14	245	14	42	1,131	30	926	56	2,458
UNGRADED ELEMENTARY	-	-	-	-	-	-	-	-	-
GRADE 9	15	264	19	38	1,144	44	983	55	2,562
GRADE 10	11	267	11	39	1,055	36	971	60	2,450
GRADE 11	16	238	17	40	1,055	36	1,052	61	2,515
GRADE 12	17	245	18	38	981	44	1,090	45	2,478
UNGRADED SECONDARY	4	6	-	1	17	2	27	-	57
TOTALS	141	2,971	166	524	13,914	427	10,758	1,269	30,170
<u>PLACENTIA-YORBA LINDA UNIFIED</u>									
KINDERGARTEN	4	173	3	32	705	23	668	138	1,746
GRADE 1	1	172	5	26	708	20	747	146	1,825
GRADE 2	2	171	1	22	727	24	797	130	1,874
GRADE 3	2	197	9	28	691	44	917	51	1,939

ORANGE COUNTY DEPARTMENT OF EDUCATION

ETHNIC RECAP BY GRADE LEVEL

SCHOOL DISTRICT	AMER IND ALASK NAT	ASIAN	PACIFIC ISLANDER	FILIPINO	HISPANIC	NOT OF HISPANIC ORIGIN		MULTIPLE NO RESP	TOTALS
						AFR AMER	WHITE		
GRADE 4	2	197	4	30	712	39	890	48	1,922
GRADE 5	5	196	4	20	690	30	971	32	1,948
GRADE 6	5	213	6	19	689	46	977	43	1,998
GRADE 7	7	215	7	28	654	44	1,063	26	2,044
GRADE 8	3	215	9	25	647	36	1,071	27	2,033
UNGRADED ELEMENTARY	-	-	-	-	-	-	1	-	1
GRADE 9	4	210	5	28	742	46	1,138	37	2,210
GRADE 10	4	218	8	27	649	42	1,319	26	2,293
GRADE 11	2	218	3	14	603	36	1,281	14	2,171
GRADE 12	4	211	5	18	585	37	1,215	18	2,093
UNGRADED SECONDARY	-	-	-	-	-	-	-	-	-
TOTALS	45	2,606	69	317	8,802	467	13,055	736	26,097
ADULTS	-	4	-	1	9	2	13	-	29
<u>SADDLEBACK VALLEY UNIFIED</u>									
KINDERGARTEN	4	123	1	50	582	27	1,005	279	2,071
GRADE 1	5	179	9	65	678	31	1,173	104	2,244
GRADE 2	7	165	11	58	636	38	1,213	98	2,226
GRADE 3	7	170	14	77	636	44	1,380	80	2,408
GRADE 4	9	182	8	79	654	48	1,361	34	2,375
GRADE 5	4	185	13	82	613	53	1,432	35	2,417
GRADE 6	8	175	8	77	654	46	1,478	35	2,481
GRADE 7	7	182	13	75	650	66	1,575	29	2,597
GRADE 8	9	197	13	90	635	52	1,677	31	2,704
UNGRADED ELEMENTARY	-	-	-	-	-	-	-	-	-
GRADE 9	8	217	5	88	652	62	1,769	23	2,824
GRADE 10	10	200	12	88	629	63	1,868	25	2,895
GRADE 11	12	206	8	89	603	59	1,834	17	2,828
GRADE 12	9	250	7	79	585	68	1,856	12	2,866
UNGRADED SECONDARY	-	-	-	-	-	-	-	-	-
TOTALS	99	2,431	122	997	8,207	657	19,621	802	32,936
<u>SANTA ANA UNIFIED</u>									
KINDERGARTEN	-	91	3	14	4,417	13	79	42	4,659
GRADE 1	1	79	10	10	4,752	20	85	38	4,995
GRADE 2	1	98	6	13	4,543	24	70	29	4,784
GRADE 3	1	101	5	13	4,349	27	86	27	4,609
GRADE 4	2	95	5	10	4,092	23	85	26	4,338
GRADE 5	5	99	6	6	4,104	20	73	24	4,337
GRADE 6	6	98	10	12	4,004	24	71	12	4,237
GRADE 7	4	126	14	4	4,027	22	151	42	4,390
GRADE 8	2	141	12	8	3,982	36	168	31	4,380
UNGRADED ELEMENTARY	-	-	-	-	-	-	-	-	-
GRADE 9	3	155	8	4	3,897	28	244	45	4,384
GRADE 10	3	153	6	16	4,020	38	230	43	4,509
GRADE 11	6	143	10	4	3,627	41	241	37	4,109
GRADE 12	7	147	9	13	3,275	40	190	28	3,709
UNGRADED SECONDARY	-	-	-	-	-	-	-	-	-
TOTALS	41	1,526	104	127	53,089	356	1,773	424	57,440
<u>TUSTIN UNIFIED</u>									
KINDERGARTEN	7	272	4	26	726	29	526	115	1,705
GRADE 1	4	290	11	36	744	43	538	101	1,767
GRADE 2	4	288	6	36	754	24	560	114	1,786
GRADE 3	4	276	5	23	701	30	548	96	1,683
GRADE 4	6	251	9	33	674	28	507	90	1,598

ORANGE COUNTY DEPARTMENT OF EDUCATION

ETHNIC RECAP BY GRADE LEVEL

SCHOOL DISTRICT	AMER IND ALASK NAT	ASIAN	PACIFIC ISLANDER	FILIPINO	HISPANIC	NOT OF HISPANIC ORIGIN		MULTIPLE NO RESP	TOTALS
						AFR AMER	WHITE		
GRADE 5	3	233	10	30	707	37	549	73	1,642
GRADE 6	7	255	5	25	730	32	568	58	1,680
GRADE 7	5	250	7	25	709	33	537	53	1,619
GRADE 8	3	233	15	29	722	49	552	37	1,640
UNGRADED ELEMENTARY	-	-	-	-	-	-	-	-	-
GRADE 9	-	255	9	39	746	36	595	54	1,734
GRADE 10	6	215	13	40	729	51	625	45	1,724
GRADE 11	7	241	18	37	658	45	586	23	1,615
GRADE 12	8	197	8	38	585	41	584	28	1,489
UNGRADED SECONDARY	-	-	-	-	-	-	-	-	-
TOTALS	64	3,256	120	417	9,185	478	7,275	887	21,682
ADULTS	-	2	-	-	1	-	-	-	3
COUNTY OPERATED PROGRAMS									
KINDERGARTEN	1	13	-	-	20	6	42	15	97
GRADE 1	1	17	-	1	21	1	63	20	124
GRADE 2	-	5	1	-	16	2	51	14	89
GRADE 3	1	16	-	-	14	5	75	22	133
GRADE 4	-	19	-	1	15	4	69	26	134
GRADE 5	1	13	-	2	22	5	75	15	133
GRADE 6	1	14	1	1	39	6	84	23	169
GRADE 7	4	20	1	3	138	8	122	24	320
GRADE 8	1	16	1	2	311	16	160	35	542
UNGRADED ELEMENTARY	-	21	1	5	74	6	62	5	174
GRADE 9	3	39	17	6	1,177	47	378	80	1,747
GRADE 10	7	54	8	4	729	35	303	51	1,191
GRADE 11	3	68	16	6	1,094	64	521	89	1,861
GRADE 12	6	57	14	13	708	80	370	51	1,299
UNGRADED SECONDARY	2	23	-	-	65	6	93	2	191
TOTALS	31	395	60	44	4,443	291	2,468	472	8,204
ORANGE COUNTY TOTALS									
KINDERGARTEN	78	4,784	143	547	17,242	464	10,128	2,423	35,809
GRADE 1	88	4,789	162	611	17,692	500	10,269	2,190	36,301
GRADE 2	68	5,028	163	608	17,457	501	10,615	2,066	36,506
GRADE 3	110	5,320	179	682	17,367	608	11,109	1,927	37,302
GRADE 4	105	4,926	183	654	17,051	609	11,400	1,747	36,675
GRADE 5	111	4,894	204	676	16,939	597	11,660	1,610	36,691
GRADE 6	125	5,225	194	687	17,047	604	12,229	1,425	37,536
GRADE 7	143	5,506	209	724	17,293	691	12,743	1,161	38,470
GRADE 8	114	5,492	216	665	17,387	692	13,376	1,352	39,294
UNGRADED ELEMENTARY	2	47	6	9	322	13	240	7	646
GRADE 9	355	6,028	266	802	19,538	827	14,978	1,345	44,139
GRADE 10	324	5,887	275	795	17,145	768	15,252	1,191	41,637
GRADE 11	423	6,076	292	741	18,099	804	15,747	1,136	43,318
GRADE 12	421	5,909	274	774	14,642	780	15,345	980	39,125
UNGRADED SECONDARY	11	59	6	12	282	21	312	14	717
TOTALS OF ALL GRADE LEVELS	2,478	69,970	2,772	8,987	225,503	8,479	165,403	20,574	504,166
ADULTS	3	63	2	7	162	5	126	1	369
TOTALS (INCLUDING ADULTS)	2,481	70,033	2,774	8,994	225,665	8,484	165,529	20,575	504,535

* Grand Total includes enrollment for La Sierra Alternative High School (FJUHSD).

Orange County Department of Education
Racial and Ethnic Survey Fall 2008

2007 – 2008
HIGH SCHOOL GRADUATE
COUNT & PERCENTAGE



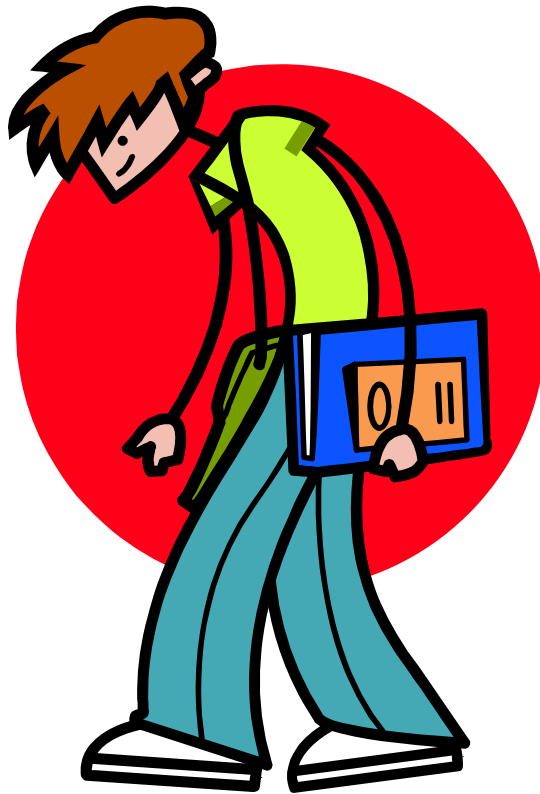
ORANGE COUNTY DEPARTMENT OF EDUCATION

HIGH SCHOOL GRADUATE COUNT AND PERCENTAGE, 2007-2008

SCHOOL DISTRICT	AMER IND ALASK NAT	ASIAN	PACIFIC ISLANDER	FILIPINO	HISPANIC	NOT OF HISPANIC ORIGIN		MULTIPLE NO RESP	TOTALS
						AFR AMER	WHITE		
Anaheim Union High	7 0.2%	542 14.3%	77 2.0%	161 4.2%	1,780 46.9%	116 3.1%	810 21.3%	303 8.0%	3,796
Fullerton Joint Union High	4 0.1%	632 20.0%	13 0.4%	89 2.8%	1,128 35.7%	74 2.3%	1,010 32.0%	207 6.6%	3,157
Huntington Beach Union	259 7.8%	789 23.7%	32 1.0%	57 1.7%	525 15.7%	39 1.2%	1,628 48.8%	7 0.2%	3,336
Brea-Olinda Unified	1 0.2%	85 15.8%	1 0.2%	7 1.3%	121 22.4%	5 0.9%	305 56.6%	14 2.6%	539
Capistrano Unified	14 0.4%	185 5.2%	10 0.3%	50 1.4%	461 13.0%	40 1.1%	2,662 75.0%	128 3.6%	3,550
Garden Grove Unified	7 0.2%	1,006 34.9%	29 1.0%	42 1.5%	1,226 42.5%	28 1.0%	546 18.9%	2 0.1%	2,886
Irvine Unified	11 0.5%	845 39.0%	5 0.2%	44 2.0%	166 7.7%	41 1.9%	999 46.1%	56 2.6%	2,167
Laguna Beach Unified	6 2.4%	3 1.2%	1 0.4%	1 0.4%	21 8.4%	3 1.2%	203 81.2%	12 4.8%	250
Los Alamitos Unified	- 0.0%	81 11.1%	5 0.7%	14 1.9%	84 11.5%	18 2.5%	505 68.9%	26 3.5%	733
Newport-Mesa Unified	9 0.6%	80 5.4%	10 0.7%	15 1.0%	418 28.4%	10 0.7%	931 63.2%	- 0.0%	1,473
Orange Unified	14 0.7%	267 12.9%	20 1.0%	38 1.8%	693 33.5%	31 1.5%	976 47.2%	27 1.3%	2,066
Placentia-Yorba Linda Unif	6 0.3%	226 11.6%	6 0.3%	22 1.1%	418 21.4%	54 2.8%	1,216 62.3%	5 0.3%	1,953
Saddleback Valley Unified	13 0.5%	203 8.2%	15 0.6%	62 2.5%	417 16.8%	49 2.0%	1,712 69.1%	7 0.3%	2,478
Santa Ana Unified	5 0.2%	110 4.6%	8 0.3%	8 0.3%	2,050 85.3%	27 1.1%	181 7.5%	15 0.6%	2,404
Tustin Unified	8 0.7%	193 15.8%	7 0.6%	28 2.3%	414 33.9%	29 2.4%	523 42.9%	18 1.5%	1,220
County Operated Programs	4 0.3%	53 4.0%	11 0.8%	6 0.5%	636 48.5%	52 4.0%	492 37.5%	58 4.4%	1,312
ORANGE COUNTY TOTALS	368 1.1%	5,300 15.9%	250 0.8%	644 1.9%	10,558 31.7%	616 1.8%	14,699 44.1%	885 2.7%	33,320

Orange County Department of Education
Racial and Ethnic Survey Fall 2008

2007 – 2008
SCHOOL DISTRICT DROPOUT
COUNT & PERCENTAGE
9TH – 12TH GRADES



ORANGE COUNTY DEPARTMENT OF EDUCATION

SCHOOL DISTRICT DROPOUT COUNT AND PERCENTAGE, 2007-2008**

SCHOOL DISTRICT	AMER IND ALASK NAT	ASIAN	PACIFIC ISLANDER	FILIPINO	HISPANIC	NOT OF HISPANIC ORIGIN		MULTIPLE NO RESP	TOTALS
						AFR AMER	WHITE		
Anaheim Union High	2 0.5%	17 4.0%	7 1.6%	7 1.6%	290 68.2%	15 3.5%	65 15.3%	22 5.2%	425
Fullerton Joint Union High	- 0.0%	20 5.7%	- 0.0%	7 2.0%	257 72.8%	11 3.1%	50 14.2%	8 2.3%	353
Huntington Beach Union High	13 8.8%	22 15.0%	3 2.0%	- 0.0%	51 34.7%	6 4.1%	52 35.4%	- 0.0%	147
Brea-Olinda Unified	- 0.0%	1 11.1%	- 0.0%	1 11.1%	4 44.4%	- 0.0%	3 33.3%	- 0.0%	9
Capistrano Unified *	- 0.0%	6 4.0%	1 0.7%	- 0.0%	77 51.7%	6 4.0%	54 36.2%	5 3.4%	149
Garden Grove Unified	1 0.7%	25 16.8%	3 2.0%	1 0.7%	88 59.1%	1 0.7%	30 20.1%	- 0.0%	149
Irvine Unified	- 0.0%	10 20.4%	1 2.0%	- 0.0%	10 20.4%	4 8.2%	21 42.9%	3 6.1%	49
Laguna Beach Unified	- 0.0%	- 0.0%	- 0.0%	- 0.0%	- 0.0%	- 0.0%	2 100.0%	- 0.0%	2
Los Alamitos Unified	- 0.0%	2 11.1%	- 0.0%	- 0.0%	4 22.2%	- 0.0%	12 66.7%	- 0.0%	18
Newport-Mesa Unified	- 0.0%	2 2.8%	- 0.0%	1 1.4%	48 66.7%	1 1.4%	20 27.8%	- 0.0%	72
Orange Unified	1 0.7%	6 4.1%	3 2.1%	2 1.4%	97 66.4%	2 1.4%	33 22.6%	2 1.4%	146
Placentia-Yorba Linda Unified	- 0.0%	2 2.0%	1 1.0%	1 1.0%	65 65.7%	4 4.0%	24 24.2%	2 2.0%	99
Saddleback Valley Unified	- 0.0%	4 4.9%	- 0.0%	1 1.2%	42 51.2%	3 3.7%	32 39.0%	- 0.0%	82
Santa Ana Unified	- 0.0%	4 2.0%	- 0.0%	1 0.5%	196 97.0%	- 0.0%	1 0.5%	- 0.0%	202
Tustin Unified	1 2.6%	- 0.0%	1 2.6%	- 0.0%	30 78.9%	2 5.3%	3 7.9%	1 2.6%	38
ORANGE COUNTY TOTALS	18 0.9%	121 6.2%	20 1.0%	22 1.1%	1,259 64.9%	55 2.8%	402 20.7%	43 2.2%	1,940

* Multiple sources of coding errors in the database have inflated this number. These coding errors are being resolved.

** The County Survey is based on grades 9 through 12 in K-12 school districts (excludes county office programs). Other studies may be calculated with a different base.

Orange County Department of Education
Racial and Ethnic Survey Fall 2008

2007 – 2008
SCHOOL DISTRICT
DROPOUT RATES
9TH – 12TH GRADES



ORANGE COUNTY DEPARTMENT OF EDUCATION

2007-2008 SCHOOL DISTRICT DROPOUT RATES*

SCHOOL DISTRICTS	AMER IND/ ALASK NAT	ASIAN	PACIFIC ISLANDER	FILIPINO	HISPANIC	NOT OF HISPANIC ORIGIN		MULTIPLE/ NO RESP.	TOTAL
						AFR. AMER.	WHITE		
ANAHEIM UNION HIGH									
9th Grade Enrollment	9	604	91	182	3,303	138	892	427	5,646
Dropouts	1	-	1	1	11	2	3	1	20
% of 9th Grade	11.1%	0.0%	1.1%	0.5%	0.3%	1.4%	0.3%	0.0%	0.4%
10th Grade Enrollment	19	616	105	174	3,154	152	994	410	5,624
Dropouts	1	3	1	-	29	-	4	2	40
% of 10th Grade	5.3%	0.5%	1.0%	0.0%	0.9%	0.0%	0.4%	0.0%	0.7%
11th Grade Enrollment	21	582	102	226	2,838	149	965	410	5,293
Dropouts	-	2	1	-	41	3	12	2	61
% of 11th Grade	0.0%	0.3%	1.0%	0.0%	1.4%	2.0%	1.2%	0.0%	1.2%
12th Grade Enrollment	10	587	101	181	2,593	157	1,021	379	5,029
Dropouts	-	12	4	6	209	10	46	17	304
% of 12th Grade	0.0%	2.0%	4.0%	3.3%	8.1%	6.4%	4.5%	4.5%	6.0%
Ungraded Secondary	-	-	-	-	-	-	-	-	-
TOTALS									
9th - 12th	59	2,389	399	763	11,888	596	3,872	1,626	21,592
Total Dropouts	2	17	7	7	290	15	65	22	425
Dropout Rate	3.4%	0.7%	1.8%	0.9%	2.4%	2.5%	1.7%	1.4%	2.0%
FULLERTON JT UHS									
9th Grade Enrollment	6	924	14	117	3,530	120	1,073	254	6,038
Dropouts	-	15	-	1	163	6	16	3	204
% of 9th Grade	0.0%	1.6%	0.0%	0.9%	4.6%	5.0%	1.5%	1.2%	3.4%
10th Grade Enrollment	6	683	11	99	1,801	88	994	203	3,885
Dropouts	-	2	-	2	31	2	10	2	49
% of 10th Grade	0.0%	0.3%	0.0%	2.0%	1.7%	2.3%	1.0%	1.0%	1.3%
11th Grade Enrollment	11	750	15	113	1,338	84	870	193	3,374
Dropouts	-	-	-	2	26	1	11	2	42
% of 11th Grade	0.0%	0.0%	0.0%	1.8%	1.9%	1.2%	1.3%	1.0%	1.2%
12th Grade Enrollment	3	638	8	89	1,028	67	990	201	3,024
Dropouts	-	3	-	2	37	2	13	1	58
% of 12th Grade	0.0%	0.5%	0.0%	2.2%	3.6%	3.0%	1.3%	0.5%	1.9%
Ungraded Secondary	-	-	-	-	-	-	-	-	-
TOTALS									
9th - 12th	26	2,995	48	418	7,697	359	3,927	851	16,321
Total Dropouts	-	20	-	7	257	11	50	8	353
Dropout Rate	0.0%	0.7%	0.0%	1.7%	3.3%	3.1%	1.3%	0.9%	2.2%
HUNTINGTON BCH UHS									
9th Grade Enrollment	201	870	45	40	912	64	1,807	19	3,958
Dropouts	-	-	-	-	1	2	3	-	6
% of 9th Grade	0.0%	0.0%	0.0%	0.0%	0.1%	3.1%	0.2%	0.0%	0.2%
10th Grade Enrollment	319	847	39	56	885	49	1,809	12	4,016
Dropouts	1	-	-	-	2	-	6	-	9
% of 10th Grade	0.3%	0.0%	0.0%	0.0%	0.2%	0.0%	0.3%	0.0%	0.2%
11th Grade Enrollment	304	862	50	59	813	50	1,851	18	4,007
Dropouts	1	4	-	-	8	2	6	-	21
% of 11th Grade	0.3%	0.5%	0.0%	0.0%	1.0%	4.0%	0.3%	0.0%	0.5%
12th Grade Enrollment	298	875	45	65	733	46	1,852	8	3,922
Dropouts	11	18	3	-	40	2	37	-	111
% of 12th Grade	3.7%	2.1%	6.7%	0.0%	5.5%	4.3%	2.0%	0.0%	2.8%
Ungraded Secondary	6	37	-	4	28	2	72	-	149
TOTALS									
9th - 12th	1,128	3,491	179	224	3,371	211	7,391	57	16,052
Total Dropouts	13	22	3	-	51	6	52	-	147
Dropout Rate	1.2%	0.6%	1.7%	0.0%	1.5%	2.8%	0.7%	0.0%	0.9%

ORANGE COUNTY DEPARTMENT OF EDUCATION

2007-2008 SCHOOL DISTRICT DROPOUT RATES*

SCHOOL DISTRICTS	AMER IND/ ALASK NAT	ASIAN	PACIFIC ISLANDER	FILIPINO	HISPANIC	NOT OF HISPANIC ORIGIN		MULTIPLE/ NO RESP.	TOTAL
						AFR. AMER.	WHITE		
BREA-OLINDA UNIF									
9th Grade Enrollment	1	79	1	14	122	7	256	21	501
Dropouts	-	-	-	-	-	-	-	-	-
% of 9th Grade	0.0%	0.0%	0.0%	0.0%	0.0%	0.0%	0.0%	0.0%	0.0%
10th Grade Enrollment	2	84	1	15	133	14	273	9	531
Dropouts	-	1	-	-	-	-	-	-	1
% of 10th Grade	0.0%	1.2%	0.0%	0.0%	0.0%	0.0%	0.0%	0.0%	0.2%
11th Grade Enrollment	1	97	3	10	123	9	300	20	563
Dropouts	-	-	-	-	-	-	-	-	-
% of 11th Grade	0.0%	0.0%	0.0%	0.0%	0.0%	0.0%	0.0%	0.0%	0.0%
12th Grade Enrollment	2	82	1	9	138	7	311	15	565
Dropouts	-	-	-	1	4	-	3	-	8
% of 12th Grade	0.0%	0.0%	0.0%	11.1%	2.9%	0.0%	1.0%	0.0%	1.4%
TOTALS									
9th - 12th	6	342	6	48	516	37	1,140	65	2,160
Total Dropouts	-	1	-	1	4	-	3	-	9
Dropout Rate	0.0%	0.3%	0.0%	2.1%	0.8%	0.0%	0.3%	0.0%	0.4%
CAPISTRANO UNIFIED **									
9th Grade Enrollment	20	214	9	65	825	67	2,980	216	4,396
Dropouts	-	3	-	-	5	1	5	1	15
% of 9th Grade	0.0%	1.4%	0.0%	0.0%	0.6%	1.5%	0.2%	0.5%	0.3%
10th Grade Enrollment	21	232	9	62	782	70	2,912	155	4,243
Dropouts	-	1	-	-	5	2	8	2	18
% of 10th Grade	0.0%	0.4%	0.0%	0.0%	0.6%	2.9%	0.3%	1.3%	0.4%
11th Grade Enrollment	17	244	14	65	648	55	2,853	135	4,031
Dropouts	-	-	-	-	9	1	6	-	16
% of 11th Grade	0.0%	0.0%	0.0%	0.0%	1.4%	1.8%	0.2%	0.0%	0.4%
12th Grade Enrollment	16	183	11	50	574	48	2,848	136	3,866
Dropouts	-	2	1	-	58	2	35	2	100
% of 12th Grade	0.0%	1.1%	9.1%	0.0%	10.1%	4.2%	1.2%	1.5%	2.6%
TOTALS									
9th - 12th	74	873	43	242	2,829	240	11,593	642	16,536
Total Dropouts	-	6	1	-	77	6	54	5	149
Dropout Rate	0.0%	0.7%	2.3%	0.0%	2.7%	2.5%	0.5%	0.8%	0.9%
GARDEN GROVE UNIF									
9th Grade Enrollment	12	1,156	41	70	2,120	44	625	-	4,068
Dropouts	1	3	-	-	7	-	5	-	16
% of 9th Grade	8.3%	0.3%	0.0%	0.0%	0.3%	0.0%	0.8%	0.0%	0.4%
10th Grade Enrollment	14	1,133	32	51	1,803	38	648	-	3,719
Dropouts	-	2	-	-	7	1	5	-	15
% of 10th Grade	0.0%	0.2%	0.0%	0.0%	0.4%	2.6%	0.8%	0.0%	0.4%
11th Grade Enrollment	6	1,079	31	39	1,678	27	636	1	3,497
Dropouts	-	3	1	-	9	-	6	-	19
% of 11th Grade	0.0%	0.3%	3.2%	0.0%	0.5%	0.0%	0.9%	0.0%	0.5%
12th Grade Enrollment	10	1,114	40	45	1,543	32	617	-	3,401
Dropouts	-	17	2	1	65	-	14	-	99
% of 12th Grade	0.0%	1.5%	5.0%	2.2%	4.2%	0.0%	2.3%	0.0%	2.9%
Ungraded Secondary	-	-	-	-	-	-	-	-	-
TOTALS									
9th - 12th	42	4,482	144	205	7,144	141	2,526	1	14,685
Total Dropouts	1	25	3	1	88	1	30	-	149
Dropout Rate	2.4%	0.6%	2.1%	0.5%	1.2%	0.7%	1.2%	0.0%	1.0%
IRVINE UNIFIED									
9th Grade Enrollment	9	841	9	65	169	47	920	76	2,136
Dropouts	-	1	-	-	-	-	1	-	2
% of 9th Grade	0.0%	0.1%	0.0%	0.0%	0.0%	0.0%	0.1%	0.0%	0.1%
10th Grade Enrollment	12	930	13	46	165	50	957	64	2,237
Dropouts	-	-	-	-	-	-	-	-	-
% of 10th Grade	0.0%	0.0%	0.0%	0.0%	0.0%	0.0%	0.0%	0.0%	0.0%
11th Grade Enrollment	7	900	4	41	165	47	1,018	61	2,243
Dropouts	-	1	-	-	1	-	1	-	3
% of 11th Grade	0.0%	0.1%	0.0%	0.0%	0.6%	0.0%	0.1%	0.0%	0.1%

** Multiple sources of coding errors in the database have inflated this number. These coding errors are being resolved.

ORANGE COUNTY DEPARTMENT OF EDUCATION

2007-2008 SCHOOL DISTRICT DROPOUT RATES*

SCHOOL DISTRICTS	AMER IND/ ALASK NAT	ASIAN	PACIFIC ISLANDER	FILIPINO	HISPANIC	NOT OF HISPANIC ORIGIN		MULTIPLE/ NO RESP.	TOTAL
						AFR. AMER.	WHITE		
IRVINE UNIFIED cont'd									
12th Grade Enrollment	11	849	8	44	186	49	1,031	58	2,236
Dropouts	-	8	1	-	9	4	19	3	44
% of 12th Grade	0.0%	0.9%	12.5%	0.0%	4.8%	8.2%	1.8%	5.2%	2.0%
Ungraded Secondary	-	-	-	-	-	-	-	-	-
TOTALS									
9th - 12th	39	3,520	34	196	685	193	3,926	259	8,852
Total Dropouts	-	10	1	-	10	4	21	3	49
Dropout Rate	0.0%	0.3%	2.9%	0.0%	1.5%	2.1%	0.5%	1.2%	0.6%
LAGUNA BEACH UNIF									
9th Grade Enrollment	2	7	-	-	12	-	212	9	242
Dropouts	-	-	-	-	-	-	-	-	-
% of 9th Grade	0.0%	0.0%	0.0%	0.0%	0.0%	0.0%	0.0%	0.0%	0.0%
10th Grade Enrollment	-	8	1	-	25	3	212	17	266
Dropouts	-	-	-	-	-	-	-	-	-
% of 10th Grade	0.0%	0.0%	0.0%	0.0%	0.0%	0.0%	0.0%	0.0%	0.0%
11th Grade Enrollment	4	9	1	2	18	3	246	16	299
Dropouts	-	-	-	-	-	-	1	-	1
% of 11th Grade	0.0%	0.0%	0.0%	0.0%	0.0%	0.0%	0.4%	0.0%	0.3%
12th Grade Enrollment	6	3	1	1	23	3	211	13	261
Dropouts	-	-	-	-	-	-	1	-	1
% of 12th Grade	0.0%	0.0%	0.0%	0.0%	0.0%	0.0%	0.5%	0.0%	0.4%
TOTALS									
9th - 12th	12	27	3	3	78	9	881	55	1,068
Total Dropouts	-	-	-	-	-	-	2	-	2
Dropout Rate	0.0%	0.0%	0.0%	0.0%	0.0%	0.0%	0.2%	0.0%	0.2%
LOS ALAMITOS UNIF									
9th Grade Enrollment	3	103	6	20	106	42	534	60	874
Dropouts	-	-	-	-	-	-	-	-	-
% of 9th Grade	0.0%	0.0%	0.0%	0.0%	0.0%	0.0%	0.0%	0.0%	0.0%
10th Grade Enrollment	2	87	8	10	96	30	547	36	816
Dropouts	-	-	-	-	-	-	1	-	1
% of 10th Grade	0.0%	0.0%	0.0%	0.0%	0.0%	0.0%	0.2%	0.0%	0.1%
11th Grade Enrollment	1	85	5	10	106	23	560	34	824
Dropouts	-	-	-	-	1	-	4	-	5
% of 11th Grade	0.0%	0.0%	0.0%	0.0%	0.9%	0.0%	0.7%	0.0%	0.6%
12th Grade Enrollment	1	83	6	14	93	24	556	30	807
Dropouts	-	2	-	-	3	-	7	-	12
% of 12th Grade	0.0%	2.4%	0.0%	0.0%	3.2%	0.0%	1.3%	0.0%	1.5%
TOTALS									
9th - 12th	7	358	25	54	401	119	2,197	160	3,321
Total Dropouts	-	2	-	-	4	-	12	-	18
Dropout Rate	0.0%	0.6%	0.0%	0.0%	1.0%	0.0%	0.5%	0.0%	0.5%
NEWPORT-MESA UNIF									
9th Grade Enrollment	5	74	7	20	659	25	937	-	1,727
Dropouts	-	1	-	-	-	-	1	-	2
% of 9th Grade	0.0%	1.4%	0.0%	0.0%	0.0%	0.0%	0.1%	0.0%	0.1%
10th Grade Enrollment	2	86	13	13	610	20	929	-	1,673
Dropouts	-	-	-	-	-	-	1	-	1
% of 10th Grade	0.0%	0.0%	0.0%	0.0%	0.0%	0.0%	0.1%	0.0%	0.1%
11th Grade Enrollment	6	81	5	16	542	18	977	-	1,645
Dropouts	-	-	-	1	2	-	1	-	4
% of 11th Grade	0.0%	0.0%	0.0%	6.3%	0.4%	0.0%	0.1%	0.0%	0.2%
12th Grade Enrollment	8	86	8	16	531	10	984	-	1,643
Dropouts	-	1	-	-	46	1	17	-	65
% of 12th Grade	0.0%	1.2%	0.0%	0.0%	8.7%	10.0%	1.7%	0.0%	4.0%
Ungraded Secondary	1	6	1	4	136	5	120	-	273
TOTALS									
9th - 12th	22	333	34	69	2,478	78	3,947	-	6,961
Total Dropouts	-	2	-	1	48	1	20	-	72
Dropout Rate	0.0%	0.6%	0.0%	1.4%	1.9%	1.3%	0.5%	0.0%	1.0%

ORANGE COUNTY DEPARTMENT OF EDUCATION

2007-2008 SCHOOL DISTRICT DROPOUT RATES*

SCHOOL DISTRICTS	AMER IND/ ALASK NAT	ASIAN	PACIFIC ISLANDER	FILIPINO	HISPANIC	NOT OF HISPANIC ORIGIN		MULTIPLE/ NO RESP.	TOTAL
						AFR. AMER.	WHITE		
ORANGE UNIFIED									
9th Grade Enrollment	10	254	8	40	1,073	39	950	58	2,432
Dropouts	-	-	-	-	5	-	2	-	7
% of 9th Grade	0.0%	0.0%	0.0%	0.0%	0.5%	0.0%	0.2%	0.0%	0.3%
10th Grade Enrollment	15	232	15	36	1,067	32	1,040	56	2,493
Dropouts	-	-	-	-	5	-	3	-	8
% of 10th Grade	0.0%	0.0%	0.0%	0.0%	0.5%	0.0%	0.3%	0.0%	0.3%
11th Grade Enrollment	20	244	16	36	984	46	1,095	47	2,488
Dropouts	-	-	-	-	9	-	3	1	13
% of 11th Grade	0.0%	0.0%	0.0%	0.0%	0.9%	0.0%	0.3%	2.1%	0.5%
12th Grade Enrollment	23	279	25	42	920	36	1,106	30	2,461
Dropouts	1	6	3	2	78	2	25	1	118
% of 12th Grade	4.3%	2.2%	12.0%	4.8%	8.5%	5.6%	2.3%	3.3%	4.8%
TOTALS									
9th - 12th	68	1,009	64	154	4,044	153	4,191	191	9,874
Total Dropouts	1	6	3	2	97	2	33	2	146
Dropout Rate	1.5%	0.6%	4.7%	1.3%	2.4%	1.3%	0.8%	1.0%	1.5%
PLACENTIA-YORBA LINDA									
9th Grade Enrollment	6	208	5	29	637	44	1,344	15	2,288
Dropouts	-	-	-	-	3	-	2	-	5
% of 9th Grade	0.0%	0.0%	0.0%	0.0%	0.5%	0.0%	0.1%	0.0%	0.2%
10th Grade Enrollment	3	212	4	13	620	40	1,316	12	2,220
Dropouts	-	-	-	-	2	-	1	-	3
% of 10th Grade	0.0%	0.0%	0.0%	0.0%	0.3%	0.0%	0.1%	0.0%	0.1%
11th Grade Enrollment	5	216	3	19	590	37	1,239	9	2,118
Dropouts	-	-	-	-	13	-	3	1	17
% of 11th Grade	0.0%	0.0%	0.0%	0.0%	2.2%	0.0%	0.2%	0.0%	0.8%
12th Grade Enrollment	6	232	5	23	557	59	1,308	4	2,194
Dropouts	-	2	1	1	47	4	18	1	74
% of 12th Grade	0.0%	0.9%	20.0%	4.3%	8.4%	6.8%	1.4%	0.0%	3.4%
Ungraded Secondary	-	-	-	-	-	-	-	-	-
TOTALS									
9th - 12th	20	868	17	84	2,404	180	5,207	40	8,820
Total Dropouts	-	2	1	1	65	4	24	2	99
Dropout Rate	0.0%	0.2%	5.9%	1.2%	2.7%	2.2%	0.5%	0.0%	1.1%
SADDLEBACK VALLEY UNIF									
9th Grade Enrollment	8	198	12	81	663	64	1,899	16	2,941
Dropouts	-	3	-	-	1	-	3	-	7
% of 9th Grade	0.0%	1.5%	0.0%	0.0%	0.2%	0.0%	0.2%	0.0%	0.2%
10th Grade Enrollment	13	200	7	87	606	59	1,846	10	2,828
Dropouts	-	-	-	-	5	-	4	-	9
% of 10th Grade	0.0%	0.0%	0.0%	0.0%	0.8%	0.0%	0.2%	0.0%	0.3%
11th Grade Enrollment	9	246	5	76	578	62	1,891	4	2,871
Dropouts	-	-	-	-	11	-	1	-	12
% of 11th Grade	0.0%	0.0%	0.0%	0.0%	1.9%	0.0%	0.1%	0.0%	0.4%
12th Grade Enrollment	16	216	15	70	544	60	1,907	11	2,839
Dropouts	-	1	-	1	25	3	24	-	54
% of 12th Grade	0.0%	0.5%	0.0%	1.4%	4.6%	5.0%	1.3%	0.0%	1.9%
Ungraded Secondary	-	-	-	-	-	-	-	-	-
TOTALS									
9th - 12th	46	860	39	314	2,391	245	7,543	41	11,479
Total Dropouts	-	4	-	1	42	3	32	-	82
Dropout Rate	0.0%	0.5%	0.0%	0.3%	1.8%	1.2%	0.4%	0.0%	0.7%
SANTA ANA UNIFIED									
9th Grade Enrollment	3	156	4	20	4,073	39	231	22	4,548
Dropouts	-	1	-	-	8	-	-	-	9
% of 9th Grade	0.0%	0.6%	0.0%	0.0%	0.2%	0.0%	0.0%	0.0%	0.2%
10th Grade Enrollment	5	153	9	12	3,843	47	257	19	4,345
Dropouts	-	-	-	-	7	-	-	-	7
% of 10th Grade	0%	0.0%	0.0%	0.0%	0.2%	0.0%	0.0%	0.0%	0.2%

ORANGE COUNTY DEPARTMENT OF EDUCATION

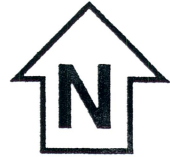
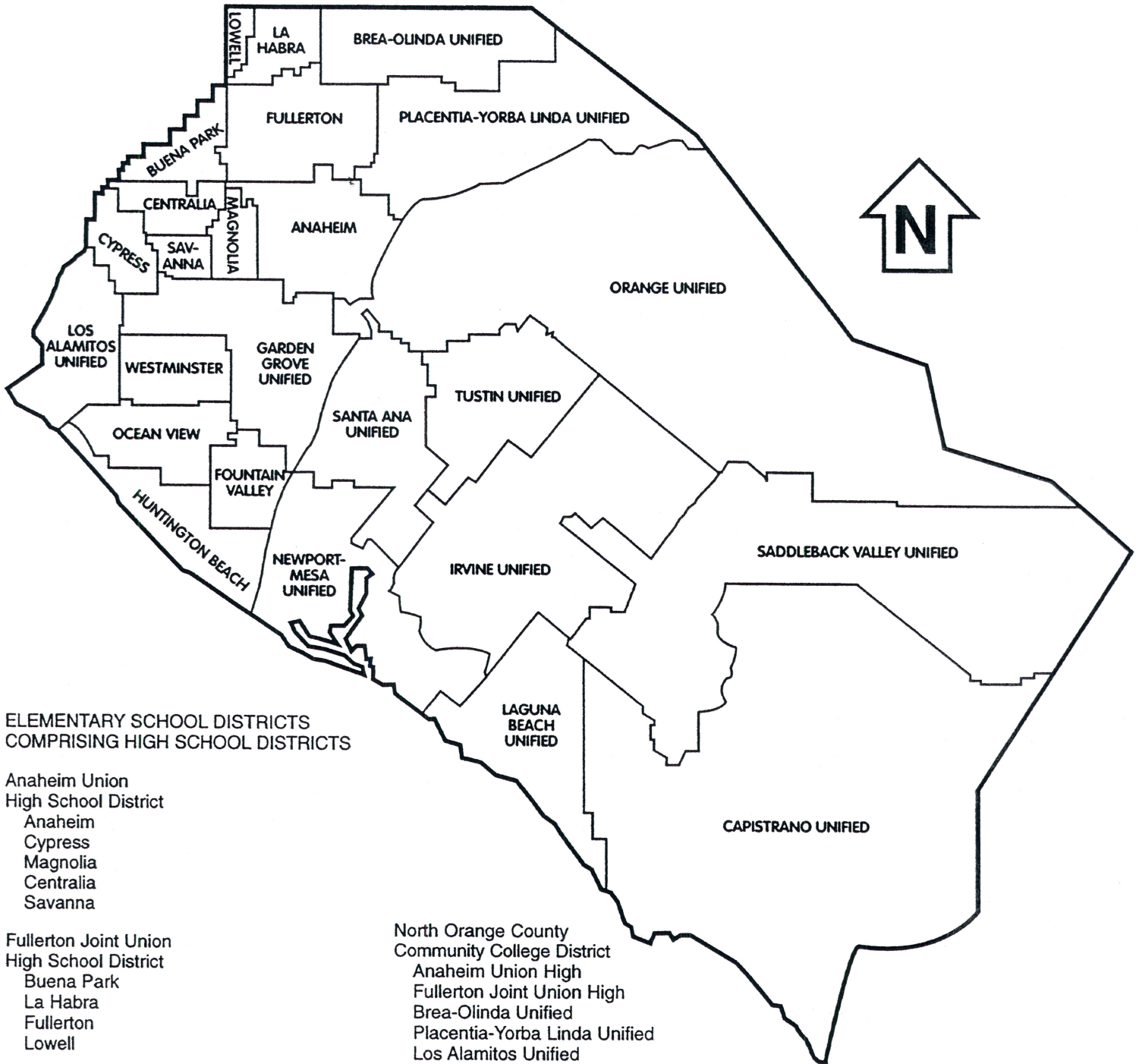
2007-2008 SCHOOL DISTRICT DROPOUT RATES*

SCHOOL DISTRICTS	AMER IND/ ALASK NAT	ASIAN	PACIFIC ISLANDER	FILIPINO	HISPANIC	NOT OF HISPANIC ORIGIN		MULTIPLE/ NO RESP.	TOTAL
						AFR. AMER.	WHITE		
SANTA ANA UNIF. cont'd									
11th Grade Enrollment	7	151	8	14	3,493	41	231	12	3,957
Dropouts	-	-	-	-	15	-	1	-	16
% of 11th Grade	0.0%	0.0%	0.0%	0.0%	0.4%	0.0%	0.4%	0.0%	0.4%
12th Grade Enrollment	5	127	13	11	2,933	37	195	15	3,336
Dropouts	-	3	-	1	166	-	-	-	170
% of 12th Grade	0.0%	2.4%	0.0%	9.1%	5.7%	0.0%	0.0%	0.0%	5.1%
Ungraded Secondary	-	-	-	-	-	-	-	-	-
TOTALS									
9th - 12th	20	587	34	57	14,342	164	914	68	16,186
Total Dropouts	-	4	-	1	196	-	1	-	202
Dropout Rate	0.0%	0.7%	0.0%	1.8%	1.4%	0.0%	0.1%	0.0%	1.2%
TUSTIN UNIFIED									
9th Grade Enrollment	7	201	12	36	727	57	634	41	1,715
Dropouts	1	-	-	-	2	1	-	-	4
% of 9th Grade	14.3%	0.0%	0.0%	0.0%	0.3%	1.8%	0.0%	0.0%	0.2%
10th Grade Enrollment	5	241	14	39	676	54	605	18	1,652
Dropouts	-	-	-	-	-	-	1	-	1
% of 10th Grade	0.0%	0.0%	0.0%	0.0%	0.0%	0.0%	0.2%	0.0%	0.1%
11th Grade Enrollment	7	205	8	34	653	44	588	30	1,569
Dropouts	-	-	-	-	2	-	-	-	2
% of 11th Grade	0.0%	0.0%	0.0%	0.0%	0.3%	0.0%	0.0%	0.0%	0.1%
12th Grade Enrollment	10	196	8	32	530	36	560	19	1,391
Dropouts	-	-	1	-	26	1	2	1	31
% of 12th Grade	0.0%	0.0%	12.5%	0.0%	4.9%	2.8%	0.4%	5.3%	2.2%
Ungraded Secondary	-	-	-	-	-	-	-	-	-
TOTALS									
9th - 12th	29	843	42	141	2,586	191	2,387	108	6,327
Total Dropouts	1	-	1	-	30	2	3	1	38
Dropout Rate	3.4%	0.0%	2.4%	0.0%	1.2%	1.0%	0.1%	0.9%	0.6%
COUNTY TOTALS									
9th Grade Enrollment	302	5,889	264	799	18,931	797	15,294	1,234	43,510
Dropouts	3	27	1	2	206	12	41	5	297
% of 9th Grade	1.0%	0.5%	0.4%	0.3%	1.1%	1.5%	0.3%	0.4%	0.7%
10th Grade Enrollment	438	5,744	281	713	16,266	746	15,339	1,021	40,548
Dropouts	2	9	1	2	93	5	44	6	162
% of 10th Grade	0.5%	0.2%	0.4%	0.3%	0.6%	0.7%	0.3%	0.6%	0.4%
11th Grade Enrollment	426	5,751	270	760	14,567	695	15,320	990	38,779
Dropouts	1	10	2	3	147	7	56	6	232
% of 11th Grade	0.2%	0.2%	0.7%	0.4%	1.0%	1.0%	0.4%	0.6%	0.6%
12th Grade Enrollment	425	5,550	295	692	12,926	671	15,497	919	36,975
Dropouts	12	75	16	15	813	31	261	26	1,249
% of 12th Grade	2.8%	1.4%	5.4%	2.2%	6.3%	4.6%	1.7%	2.8%	3.4%
Ungraded Secondary	7	43	1	8	164	7	192	-	422
TOTALS									
9th - 12th	1,598	22,977	1,111	2,972	62,854	2,916	61,642	4,164	160,234
Total Dropouts	18	121	20	22	1,259	55	402	43	1,940
Dropout Rate	1.1%	0.5%	1.8%	0.7%	2.0%	1.9%	0.7%	1.0%	1.2%

*The County Survey is based on grades 9 through 12 in K-12 school districts (excludes county office programs).

Other studies may be calculated with a different base.

ORANGE COUNTY SCHOOL DISTRICTS



ELEMENTARY SCHOOL DISTRICTS COMPRISING HIGH SCHOOL DISTRICTS

Anaheim Union
High School District
Anaheim
Cypress
Magnolia
Centralia
Savanna

Fullerton Joint Union
High School District
Buena Park
La Habra
Fullerton
Lowell

Huntington Beach Union
High School District
Fountain Valley
Huntington Beach City
Ocean View
Westminster

HIGH SCHOOL DISTRICTS COMPRISING COMMUNITY COLLEGE DISTRICTS

Coast Community College District
Huntington Beach Union
Los Alamitos Unified
(Seal Beach Area)
Newport-Mesa Unified
Garden Grove Unified (South of Chapman
Avenue & East of Euclid Avenue)

North Orange County
Community College District
Anaheim Union High
Fullerton Joint Union High
Brea-Olinda Unified
Placentia-Yorba Linda Unified
Los Alamitos Unified
Garden Grove Unified (North of Chapman
Avenue & West of Euclid Avenue)

Rancho Santiago Community College
District
Santa Ana Unified
Orange Unified
Garden Grove Unified (East of Euclid
Avenue & North of Edinger Avenue)

South Orange County Community College
District
Capistrano Unified
Irvine Unified
Laguna Beach Unified
Saddleback Valley Unified
Tustin Unified

ORANGE COUNTY DEPARTMENT OF EDUCATION
200 KALMUS DRIVE
POST OFFICE BOX 9050
COSTA MESA, CA 92628-9050
TELEPHONE: (714) 966-4000