

Orange County Department of Education

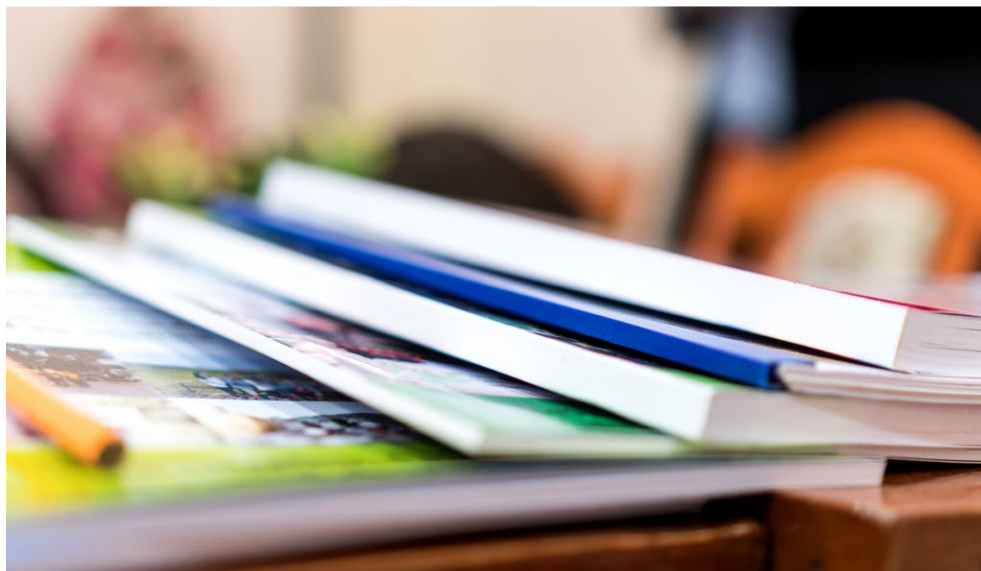
200 Kalmus Drive Costa Mesa, CA 92626 ▪ www.ocde.us

Al Mijares, Ph.D., Superintendent ▪ amijares@ocde.us ▪ (714) 966-4000

SARC

2022-23

School Accountability
Report Card
Published in 2023-24



Orange County Department of Education: Special Education Services

Grades Infant, Pre-K-Adult ▪ CDS Code 30-10306-6069553

Analee Kredel, Chief
akredel@ocde.us

200 Kalmus Drive
Costa Mesa, CA 92628
(714) 966-4129

www.ocde.us/SPED



Principal's Message

It is the goal of the Orange County Department of Education (OCDE) Special Education Services to provide the most meaningful educational program designed to meet each student's individual needs. This goal emphasizes the teaching of skills utilizing a curriculum aligned with California state standards and are critical to the present and future needs of our students.

Our philosophy is based on the following beliefs:

- All students have the ability as well as the right to learn and to progress
- Each student's educational program shall be developed through the Individualized Education Program (IEP) process, utilizing a team to identify and implement functional goals and objectives
- Each student's educational program shall focus on maximizing student independence
- Each student shall participate in instructional activities that are positive, age-appropriate, and safe in inclusive settings whenever possible

All students shall be provided opportunities to participate in instruction that assists them in their present and future environments.

The OCDE Special Education Division provides an appropriate special education program for students referred from the 28 local school districts in Orange County and seven school districts outside of Orange County.

Educational programs are provided to meet the needs of the following types of students:

- Students with the most extensive educational needs.
- Students with emotional disturbance disabilities
- Students who are Deaf and Hard of Hearing (DHH)

The classes for students with the most extensive needs serves students ages 3-22 years whose primary disabilities include intellectual disabilities, autism, multiple disabilities and orthopedic impairments. Additionally, students often display significant language and behavioral disabilities requiring a low student-to-staff ratio in a structured class setting. Specialized physical health care services are available for those students whose medical conditions warrant such services. Classes also provide opportunity for instructional opportunities in the community.

The classes serving students with disabilities that include emotional disturbances are located on an alternative school site. These students range from 11 to 22 years of age. The program provides access to state standards with curriculum that is designed to meet the unique needs of our students. In addition, emphasis is placed on addressing the emotional needs of the students through counseling and teaching social emotional regulation skills to students. This program also includes opportunities for community-based instruction, career technical education and vocational training for the students.

The DHH classes offer programs for deaf and hard-of-hearing infants and students in prekindergarten through grade 12. Students with hearing loss have the opportunity to be educated in least restrictive environments with hearing peers or in special classes. DHH program options include the Parent-Infant Education and Support (PIES) Program, the Oral Deaf and Hard of Hearing Program (three years old through the sixth grade), the DHH Program for students in grades 7-12, and the DHH Adult Transition Program for students 18-22 years.

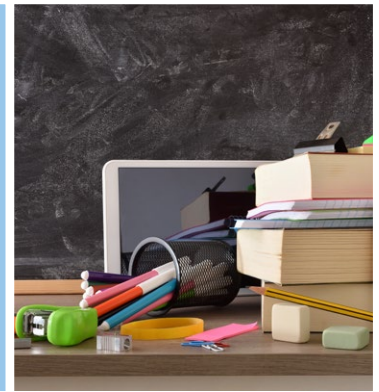
The OCDE Special Education Services operates 48 classes. These classes are on 13 school district sites throughout Orange County.

School Mission Statement

To ensure that all students with disabilities are equipped with the 21st-century competencies, they need to be as successful and as independent as possible in present and future environments.

School Vision Statement

Orange County Department of Education's Special Education Division is dedicated to the fundamental human values of respect, responsibility, integrity and professional ethics. Our priority is service to students with special needs, schools, districts, families and community members. We provide a safe, caring, courteous, and professional environment that fosters collaborative work and individual development for our employees. We hold ourselves and each other accountable for the highest level of performance, efficiency, resource management, and professionalism.



School Accountability Report Card

In accordance with state and federal requirements, the School Accountability Report Card (SARC) is put forth annually by all public schools as a tool for parents and interested parties to stay informed of the school's progress, test scores and achievements.

District Mission Statement

The mission of the Orange County Department of Education is to ensure that all students are equipped with the competencies they need to thrive in the 21st century.

District Vision Statement

Orange County will lead the nation in college and career readiness and success.

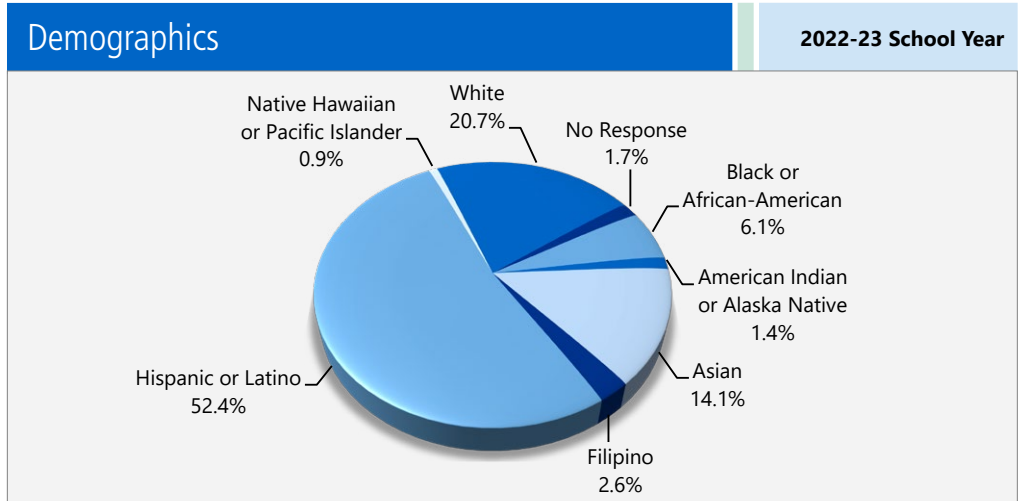
Governing Board

- Orange County Board of Education
- Jorge Valdes, Esq., 1st District
- Mari Barke, 2nd District
- Dr. Ken L. Williams, 3rd District
- Tim Shaw, 4th District
- Lisa Sparks, Ph.D., 5th District



Enrollment by Student Group

The total enrollment at the school was 347 students for the 2022-23 school year. The pie chart displays the percentage of students enrolled in each group.



Enrollment by Student Group

Demographics	
2022-23 School Year	
Female	32.60%
Male	67.10%
Non-Binary	0.30%
English learners	24.20%
Foster youth	2.00%
Homeless	0.00%
Migrant	0.00%
Socioeconomically Disadvantaged	44.40%
Students with Disabilities	100.00%

Average Class Size and Class Size Distribution

- Class size average eight students per class for students with the most extensive needs
- Class size average eight students per class for students in the Deaf and Hard-of-Hearing programs



School Safety

It is the policy of the Orange County Department of Education to provide a safe and secure learning environment for all students in a courteous and professional setting. We hold each other and ourselves accountable for the highest level of performance, efficiency, resource management and professional conduct.

The California Education Code (Sections 35294-35294.9) requires county offices of education to develop and implement school safety plans. OCDE has written and implemented a comprehensive plan based on principles and procedures that cultivate and foster a safe and caring school climate.

Each of our sites maintains a disaster-preparedness plan that reflects the policies of the Orange County Department of Education. These disaster plans are coordinated as much as possible with the host district where OCDE programs are housed. The sites review their site disaster plan annually to ensure that staff is versed on the emergency plans and responsibilities for the safety, health and supervision of students during an emergency situation.

School sites also participate in monthly safety drills with their host sites when applicable and participate in the Great California Shake Out each October. In addition, sites implement the monthly SB 198 Injury Illness Prevention Program, good repair/safety reports, and annual fire-extinguisher check.

In addition, OCDE classroom staff participate in CPR/First Aid training every other year. Mandatory staff training for all classroom-based staff includes: mandated reporting, blood-borne pathogens, and suicide prevention.

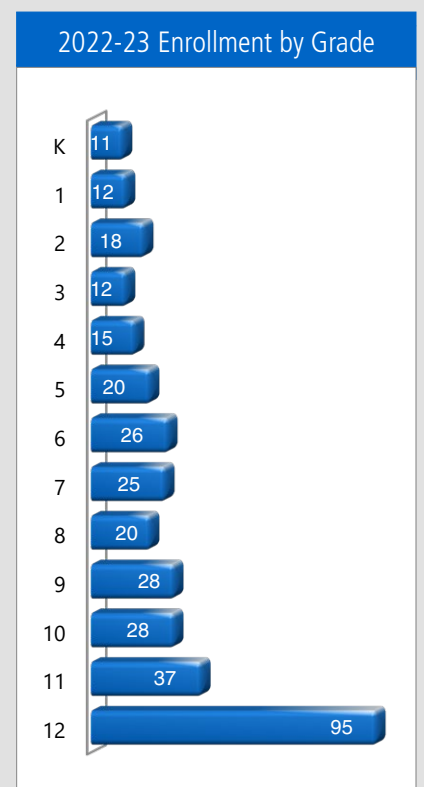
School Nurses train staff on the administration of routine medications, emergency medication administration, seizure care and individualized specialized health care plans for students as applicable.

School Psychologist also review student crisis intervention and behavior intervention plans with classroom staff. Classroom staff working with student with significant behavioral issues also attend 14-18 hours of ProACT Training.

The school safety reports are reviewed, updated and discussed with the school staff during minimum days at the various sites by January 2024.

Enrollment by Grade

The bar graph displays the total number of students enrolled in each grade for the 2022-23 school year.





Suspensions and Expulsions

This table shows the school, district, and state suspension and expulsion rates collected between July through June, each full school year respectively. Note: Students are only counted one time, regardless of the number of suspensions.

Suspensions and Expulsions							Three-Year Data		
	Special Education			Orange CDE			California		
	20-21	21-22	22-23	20-21	21-22	22-23	20-21	21-22	22-23
Suspension rates	0.50%	0.00%	0.50%	0.00%	1.00%	1.60%	0.20%	3.20%	3.60%
Expulsion rates	0.00%	0.00%	0.00%	0.00%	0.00%	0.00%	0.00%	0.10%	0.10%

Note: Data collected during the 2020–21 school year may not be comparable to later years of this collection due to differences in learning mode instruction in response to the COVID-19 pandemic.

Suspensions and Expulsions by Student Group

Suspensions and Expulsions by Student Group		2022-23 School Year	
Student Group	Suspensions Rate	Expulsions Rate	
All Students	0.50%	0.00%	
Female	0.00%	0.00%	
Male	0.70%	0.00%	
Non-Binary	0.00%	0.00%	
American Indian or Alaska Native	0.00%	0.00%	
Asian	0.00%	0.00%	
Black or African American	0.00%	0.00%	
Filipino	0.00%	0.00%	
Hispanic or Latino	0.50%	0.00%	
Native Hawaiian or Pacific Islander	0.00%	0.00%	
Two or More Races	0.00%	0.00%	
White	0.00%	0.00%	
English Learners	0.00%	0.00%	
Foster Youth	0.00%	0.00%	
Homeless	0.00%	0.00%	
Socioeconomically Disadvantaged	1.00%	0.00%	
Students Receiving Migrant Education Services	0.00%	0.00%	
Students with Disabilities	0.50%	0.00%	

Career Technical Education Programs

Secondary students in special education who are 15 years of age and older have Individual Transition Plans (ITPs) incorporated into their IEPs. This process assists the student and family to develop postsecondary goals in the areas of education/training, employment and independent living. The transition planning process includes development of interagency linkages needed to obtain services and supports for students leaving the school system and allows sufficient time to develop a comprehensive plan to attain success in post-school placement and integrated work. Adult Transition Programs located on the campuses of Golden West College, Orange Coast College and Saddleback Community College provided intensive transition planning services for students 18-22 years of age. The Adult Transition Programs (ATPs) are designed to help students move with maximum success from school to post-school placement in continuing education, community and integrated work settings.

Interagency collaboration included monthly participation and action planning with Chapman University Transition Leadership, Orange County Transportation Authority, Orange County Adult Transition Task Force and the Adult Services Advisory Committee. These committees included representatives from OCDE, Regional Center, Department of Rehabilitation, mental health, local parents, adult service providers and community colleges. In addition, Orange County Department of Education Adult Services Transition Planning Resource Directory was updated and distributed countywide. The directory included descriptions of 50 postsecondary continuing education programs, supported work, and adult service agencies. Performance indicators and outcome information for these agencies was also provided. For more detailed information on the directory, please visit www.ocde.us/transition.

Career technical education programs offered by the Orange County Department of Education included vocational education and work-based learning on campus and at community-based training sites. This training reflected the local job market and included preparation for work in agriculture, natural resources, food services, retail, janitorial and door-to-door delivery. Students also gained work experience through volunteer service at nonprofit organizations such as Assistance League.

Student's attending the Deaf and Hard of Hearing Program located at University High School begin their transition planning just before or when they turn 16.

Continued on page 5





California Physical Fitness Test

Each spring, all students in grades 5, 7 and 9 are required to participate in the California Physical Fitness Test (PFT). The Fitnessgram is the designated PFT for students in California public schools put forth by the State Board of Education. Due to changes to the 2021–22 and 2022–23 PFT administration, only participation results are required for the five fitness areas.

Encouraging and assisting students in establishing lifelong habits of regular physical activity is the primary goal of the Fitnessgram. The table shows the percentage of students participating in each of the five fitness components for the most recent testing period. For more detailed information on the California PFT, please visit www.cde.ca.gov/ta/tg/pf.

California Physical Fitness Test					2022-23 School Year
Percentage of Students Participating In Each Of The Five Fitness Components					
Grade	Component 1:	Component 2:	Component 3:	Component 4:	Component 5:
	Aerobic Capacity	Abdominal Strength and Endurance	Trunk Extensor and Strength and Flexibility	Upper Body Strength and Endurance	Flexibility
5	94%	100%	100%	100%	100%
7	91%	100%	100%	100%	100%
9	79%	79%	79%	79%	79%

Chronic Absenteeism by Student Group

Chronic Absenteeism by Student Group				2022-23 School Year
Student Group	Cumulative Enrollment	Chronic Absenteeism Eligible Enrollment	Chronic Absenteeism Count	Chronic Absenteeism Rate
All Students	425	401	168	41.90%
Female	141	131	66	50.40%
Male	282	269	102	37.90%
Non-Binary	2	1	0	0.00%
American Indian or Alaska Native	5	5	0	0.00%
Asian	55	52	13	25.00%
Black or African American	25	24	10	41.70%
Filipino	13	12	4	33.30%
Hispanic or Latino	217	207	106	51.20%
Native Hawaiian or Pacific Islander	5	4	3	75.00%
Two or More Races	0	0	0	0.00%
White	92	87	28	32.20%
English Learners	101	95	52	54.70%
Foster Youth	19	15	8	53.30%
Homeless	0	0	0	0.00%
Socioeconomically Disadvantaged	201	191	76	39.80%
Students Receiving Migrant Education Services	0	0	0	0.00%
Students with Disabilities	425	401	168	41.90%

Career Technical Education Programs

Continued from page 4

As sophomores, students attend a sophomore conference with their parents to plan the remainder of their secondary coursework. In addition, they learn about the agencies that will provide services to them as they exit high school and enter the adult world. During sophomore conferences, it is also determined if a student will be on the diploma or certificate of completion track. During the 2022-23 school year, 11 students from the DHH program enrolled in ROP courses in the areas of culinary arts, construction, retail sales and CSI. Finally, seniors meet their Department of Rehabilitation counselors in January and make the final preparation for their transition to a variety of educational and employment programs, including the DHH Adult Transition Program located on the campus of Orange Coast College.



Career Technical Education Participation

This table displays information about participation in the school's Career Technical Education (CTE) programs.

Career Technical Education Data

Special Education

2022-23 Participation

Number of pupils participating in a CTE program	68
Percentage of pupils who completed a CTE program and earned a high school diploma	3%
Percentage of CTE courses that are sequenced or articulated between a school and institutions of postsecondary education	0%

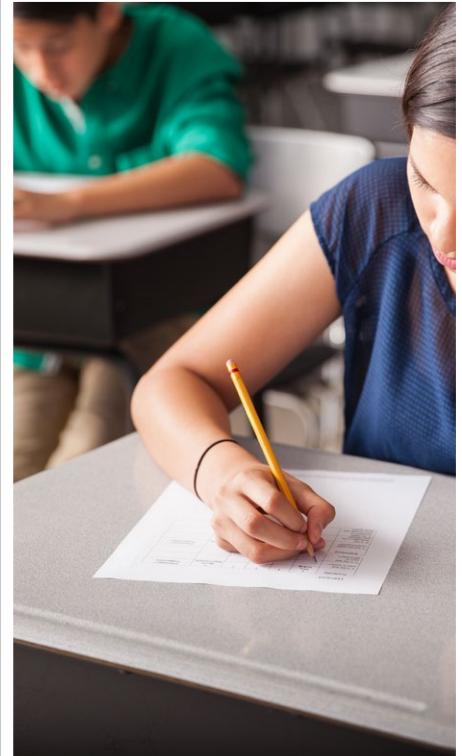


Statewide Assessments

Statewide assessments (i.e., California Assessment of Student Performance and Progress [CAASPP] System includes the Smarter Balanced Summative Assessments for students in the general education population and the California Alternate Assessments [CAAs] for English language arts/literacy [ELA] and mathematics given in grades three through eight and grade eleven. Only eligible students may participate in the administration of the CAAs. CAAs items are aligned with alternate achievement standards, which are linked with the Common Core State Standards [CCSS] for students with the most significant cognitive disabilities).

The CAASPP System encompasses the following assessments and student participation requirements:

- Smarter Balanced Summative Assessments and CAAs for ELA** in grades three through eight and grade eleven.
- Smarter Balanced Summative Assessments and CAAs for mathematics** in grades three through eight and grade eleven.
- California Science Test (CAST) and CAAs for Science** in grades five, eight, and once in high school (i.e., grade 10, 11 or 12).



CAASPP Test Results in Science for All Students

The table below shows the percent of students meeting or exceeding the State standard on the CAASPP—California Science Test (CAST) and the California Alternate Assessment for Science (CAA for Science) for grades 5, 8 and once in high school (i.e., grade 10, 11 or 12).

Percentage of Students Meeting or Exceeding State Standard					Two-Year Data	
Subject	Special Education		Orange CDE		California	
	21-22	22-23	21-22	22-23	21-22	22-23
Science	0%	5.26%	21.84%	9.20%	29.47%	30.29%

CAASPP Test Results in ELA and Mathematics for All Students

The table below shows the percent of students meeting or exceeding the State standards on the California Assessment of Student Performance and Progress (CAASPP) Smarter Balanced Summative Assessments and California Alternate Assessments (CAAs) for English language arts/literacy (ELA) and mathematics for grades 3-8 and 11.

Percentage of Students Meeting or Exceeding State Standard					Two-Year Data	
Subject	Special Education		Orange CDE		California	
	21-22	22-23	21-22	22-23	21-22	22-23
English language arts/literacy	2%	3%	53%	52%	47%	46%
Mathematics	2%	2%	40%	39%	33%	34%

CAASPP by Student Group: Science, English Language Arts and Mathematics

The tables on the following pages display the percentage of students that met or exceeded state standards in science, English language arts/literacy and mathematics for the school by student groups.

The “percentage met or exceeded” is calculated by taking the total number of students who met or exceeded the standard on the Smarter Balanced Summative Assessment plus the total number of students who met the standard on the CAA divided by the total number of students who participated in both assessments.

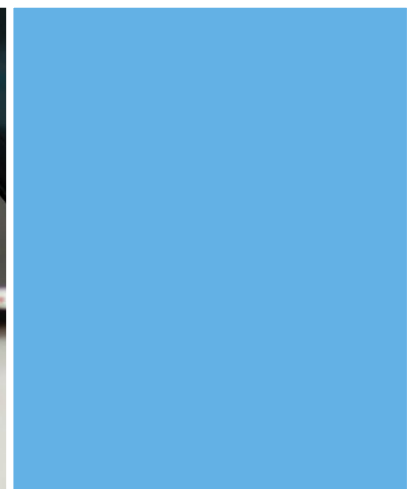
Note: The number of students tested includes all students who participated in the test whether they received a score or not. However, the number of students tested is not the number that was used to calculate the achievement level percentages. The achievement level percentages are calculated using only students who received scores.



CAASPP Test Results by Student Group: Science (grades 5, 8 and high school)

Percentage of Students Meeting or Exceeding State Standard					2022-23 School Year
Science					
Group	Total Enrollment	Number Tested	Percentage Tested	Percentage Not Tested	Percentage Met or Exceeded
All students	73	58	79.45%	20.55%	5.17%
Female	19	16	84.21%	15.79%	6.25%
Male	53	41	77.36%	22.64%	2.44%
American Indian or Alaska Native	❖	❖	❖	❖	❖
Asian	❖	❖	❖	❖	❖
Black or African American	❖	❖	❖	❖	❖
Filipino	❖	❖	❖	❖	❖
Hispanic or Latino	38	32	84.21%	15.79%	9.38%
Native Hawaiian or Pacific Islander	❖	❖	❖	❖	❖
Two or more races	❖	❖	❖	❖	❖
White	16	12	75.00%	25.00%	0.00%
English Learners	11	7	63.64%	36.36%	❖
Foster Youth	❖	❖	❖	❖	❖
Homeless	❖	❖	❖	❖	❖
Military	❖	❖	❖	❖	❖
Socioeconomically disadvantaged	29	27	93.10%	6.90%	0.00%
Students receiving Migrant Education services	❖	❖	❖	❖	❖
Students with Disabilities	73	58	79.45%	20.55%	5.17%

❖ Scores are not shown when the number of students tested is ten or less, either because the number of students in this category is too small for statistical accuracy or to protect student privacy.





CAASPP Test Results by Student Group: English Language Arts (grades 3-8 and 11)

Percentage of Students Meeting or Exceeding State Standard

2022-23 School Year

English Language Arts

Group	Total Enrollment	Number Tested	Percentage Tested	Percentage Not Tested	Percentage Met or Exceeded
All students	170	134	78.82%	21.18%	3.01%
Female	51	39	76.47%	23.53%	2.63%
Male	117	94	80.34%	19.66%	2.13%
American Indian or Alaska Native	❖	❖	❖	❖	❖
Asian	20	14	70.00%	30.00%	7.14%
Black or African American	❖	❖	❖	❖	❖
Filipino	❖	❖	❖	❖	❖
Hispanic or Latino	85	71	83.53%	16.47%	4.29%
Native Hawaiian or Pacific Islander	❖	❖	❖	❖	❖
Two or more races	❖	❖	❖	❖	❖
White	38	32	84.21%	15.79%	0.00%
English Learners	42	32	76.19%	23.81%	3.13%
Foster Youth	❖	❖	❖	❖	❖
Homeless	❖	❖	❖	❖	❖
Military	❖	❖	❖	❖	❖
Socioeconomically disadvantaged	78	67	85.90%	14.10%	3.03%
Students receiving Migrant Education services	❖	❖	❖	❖	❖
Students with Disabilities	170	134	78.82%	21.18%	3.01%

❖ Scores are not shown when the number of students tested is ten or less, either because the number of students in this category is too small for statistical accuracy or to protect student privacy.

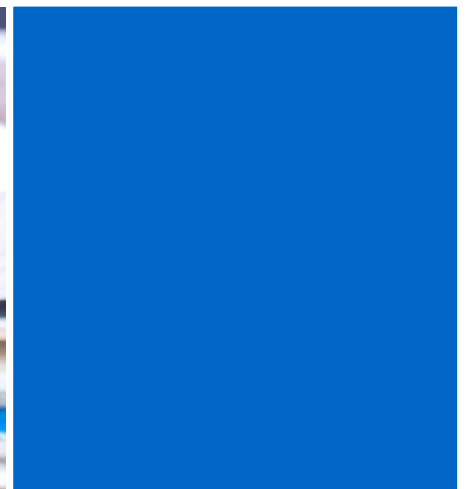




CAASPP Test Results by Student Group: Mathematics (grades 3-8 and 11)

Percentage of Students Meeting or Exceeding State Standard					2022-23 School Year
Mathematics					
Group	Total Enrollment	Number Tested	Percentage Tested	Percentage Not Tested	Percentage Met or Exceeded
All students	170	141	82.94%	17.06%	2.13%
Female	51	40	78.43%	21.57%	0.00%
Male	117	100	85.47%	14.53%	2.00%
American Indian or Alaska Native	❖	❖	❖	❖	❖
Asian	20	16	80.00%	20.00%	12.50%
Black or African American	❖	❖	❖	❖	❖
Filipino	❖	❖	❖	❖	❖
Hispanic or Latino	85	73	85.88%	14.12%	1.37%
Native Hawaiian or Pacific Islander	❖	❖	❖	❖	❖
Two or more races	❖	❖	❖	❖	❖
White	38	32	84.21%	15.79%	0.00%
English Learners	42	35	83.33%	16.67%	0.00%
Foster Youth	❖	❖	❖	❖	❖
Homeless	❖	❖	❖	❖	❖
Military	❖	❖	❖	❖	❖
Socioeconomically disadvantaged	78	68	87.18%	12.82%	1.47%
Students receiving Migrant Education services	❖	❖	❖	❖	❖
Students with Disabilities	170	141	82.94%	17.06%	2.13%

❖ Scores are not shown when the number of students tested is ten or less, either because the number of students in this category is too small for statistical accuracy or to protect student privacy.





Graduation and Dropout Rates

This table displays the graduation and dropout rates for the most recent three-year period for which data is available. The four-year adjusted cohort graduation rate is the number of students who graduate in four years with a regular high school diploma divided by the number of students who form the adjusted cohort for the graduating class. From the beginning of grade 9 (or the earliest high school grade), students who are entering that grade for the first time form a cohort that is "adjusted" by adding any students who subsequently transfer into the cohort and subtracting any students who subsequently transfer out.

Graduation and Dropout Rates	Three-Year Data					
	Graduation Rate			Dropout Rate		
	20-21	21-22	22-23	20-21	21-22	22-23
Special Education	0.00%	18.50%	10.00%	8.30%	3.70%	26.70%
Orange CDE	55.20%	63.70%	62.70%	16.30%	14.50%	13.80%
California	83.60%	87.00%	86.20%	9.40%	7.80%	8.20%

Graduation Rate by Student Group (Four-Year Cohort Rate)

Graduation Rate by Student Group	2022-23 School Year		
	Student Group	Number of Students in Cohort	Number of Cohort Graduates
All Students	30	3	10.00%
Female	❖	❖	❖
Male	21	2	9.50%
Non-Binary	❖	❖	❖
American Indian or Alaska Native	❖	❖	❖
Asian	❖	❖	❖
Black or African American	❖	❖	❖
Filipino	❖	❖	❖
Hispanic or Latino	17	3	17.60%
Native Hawaiian or Pacific Islander	❖	❖	❖
Two or More Races	❖	❖	❖
White	❖	❖	❖
English Learners	❖	❖	❖
Foster Youth	❖	❖	❖
Homeless	❖	❖	❖
Socioeconomically Disadvantaged	16	2	12.50%
Students Receiving Migrant Education Services	❖	❖	❖
Students with Disabilities	30	3	10.00%

For information on the Four-Year Adjusted Cohort Graduation Rate (ACGR), visit the CDE Adjusted Cohort Graduation Rate web page at <https://www.cde.ca.gov/ds/ad/acgrinfo.asp>.

❖ Scores are not shown when the number of students tested is ten or less, either because the number of students in this category is too small for statistical accuracy or to protect student privacy.

Advanced Placement Courses

The following is a list of Advanced Placement (AP) courses offered where there are student course enrollments of at least one student.

Advanced Placement Courses	
2022-23 School Year	
Percentage of students enrolled in AP courses	0%
Number of AP courses offered at the school	0
Number of AP Courses Offered	
Computer science	0
English	0
Fine and performing arts	0
Foreign language	0
Mathematics	0
Science	0
Social science	0

Courses for University of California (UC) and/or California State University (CSU) Admission

The table displays two measures related to the school's courses that are required for University of California and California State University admission for the most recent year for which data is available. For more detailed information, visit <http://dq.cde.ca.gov/dataquest>. For general admissions requirements, please visit the UC Admissions Information web page at <http://admission.universityofcalifornia.edu>. For admission, application and fee information, see the CSU web page at www.calstate.edu/admission/admission.shtml.

UC/CSU Admission	
Special Education	
2021-22 and 2022-23 School Years	
Percentage of students enrolled in courses required for UC/CSU admission in 2022-23	0.00%
Percentage of graduates who completed all courses required for UC/CSU admission in 2021-22	0.00%



Textbooks and Instructional Materials

The majority of the students enrolled in the OCDE program are participating in a modified or functional life-skills curriculum. As a result, many of the instructional materials needed to teach this curriculum are not on the state-adopted textbook list.

For students with the most significant disabilities, teachers assess students using the Student Annual Needs Determination Inventory (SANDI). Modified California Content Standards serve as the guide for instruction. Teachers use various online programs, such as Unique Learning System (ULS), ST Math, Lexia Reading, i-Ready curriculums for students with moderate-to-severe disabilities.

IEP goals are aligned to California state grade level content standards at various levels of implementation. Each school orders adapted materials and supplemental materials that make instruction relevant for the students. Universal Design for Learning (UDL), assistive technology and/or augmentative alternative communication equipment and strategies are provided so that students are able to access the standards-based curriculum.

In the DHH programs, textbooks are available for every student, including English language learners. For students who receive instruction in the core curriculum, textbooks are chosen using the most recently board-approved textbooks from the host school district.

Availability of Textbooks and Instructional Materials

The following lists the percentage of pupils who lack their own assigned textbooks and instructional materials.

Percentage of Students Lacking Materials by Subject	
2023-24 School Year	
Reading/language arts	0%
Mathematics	0%
Science	0%
History/social science	0%
Visual and performing arts	0%
Foreign language	0%
Health	0%
Science laboratory equipment	0%

Textbooks and Instructional Materials List

2023-24 School Year

Subject	Textbook	Adopted
Reading/language arts	Spectrum Spelling, Carson-Dellosa	2019
Reading/language arts	The Apple Tree Curriculum for Developing Written Language, Gander Publishing	2013
Reading/language arts	Reading Mastery, SRA/McGraw-Hill (K-6)	2008
Reading/language arts	Reading Mastery/Language Arts, SRA/McGraw-Hill (K-5)	2008
Reading/language arts	Reading Mastery, Transformations Series	2020
Reading/language arts	Everyday Spelling, Scott Foresman	2022
Reading/language arts	Bedrock Literacy Curriculum	2022
Reading/language arts	Bilingual Grammar Curriculum (BCG)	2022
Reading/language arts	Unique learning System	2016
Reading/language arts	IXL Online Personalized Learning	2010
Reading/language arts	World of Vocabulary, Globe Fearon	2019
Reading/language arts	Daily Academic Vocabulary	2022
Reading/language arts	Target Spelling Series, Steck Vaugh	2004
Reading/language arts	Writing and Grammar: Communication in Action, Composition; Prentice Hall	2003
Reading/language arts	Wordskills (6-12)	2001
Reading/language arts	A Tale of Two Cities (Adapted), Pacemaker	2023
Reading/language arts	Frankenstein (Adapted), Pacemaker	2023
Reading/language arts	The Giver	2022
Reading/language arts	Anthology Series (Readers, Students, American), Globe Fearon	1998
Reading/language arts	The Adventures of Tom Sawyer (Stepping Stones), Random House	2021
Reading/language arts	Call of the Wild (Adapted), Saddleback Educational Publishing	2020

Currency of Textbooks

This table displays the date when the most recent hearing was held to adopt a resolution on the sufficiency of instructional materials.

Currency of Textbooks	
2023-24 School Year	
Data collection date	8/2/2023

Quality of Textbooks

The following table outlines the criteria required for choosing textbooks and instructional materials.

Quality of Textbooks	
2023-24 School Year	
Criteria	Yes/No
Are the textbooks adopted from the most recent state-approved or local governing-board-approved list?	Yes

Textbooks and Instructional Materials, *Continued from page 11*

Textbooks and Instructional Materials List		2023-24 School Year
Subject	Textbook	Adopted
Reading/language arts	Scholastic Magazines: News (2-3); Action & Scope (3); Upfront	2014
Reading/language arts	Goodman's Five Star Stories, Jamestown Publishing	1996
Reading/language arts	Beowulf (adapted), Sundance Publications	2023
Reading/language arts	Basic English Grammar, Pacemaker	2013
Reading/language arts	Wordly Wise Level 1 and 2	2022
Reading/language arts	Houghton Mifflin English Grammar (K-6)	2002
Reading/language arts	Vocabulary Connections, Steck Vaughn	2004
Reading/language arts	Vocabu-Lit Series, Perfections Learning	2005
Reading/language arts	Latin Roots	2022
Reading/language arts	Emege Hi-Lo Texts Saddleback Educational Publishing	2023
Mathematics	IXL Online Personal Learning	2010
Mathematics	Cengage PFN7 Billingsley + Gitman + Joehnk	2023
Mathematics	Pre-Algebra, AGS	2004
Mathematics	My Math, McGraw-Hill (K-6)	2016
Mathematics	Banking for Non-Readers (PCI)	2017
Mathematics	Algebra 2, Prentice Hall	2006
Mathematics	Math Steps, Houghton Mifflin (K-6)	2002
Mathematics	Algebra 1, Holt	2009
Mathematics	Geometry, McDougal Littell	2007
Science	Science, Scott Foresman (K-5)	2007
Science	Reflections, Harcourt	2022
Science	Campbell Essential Biology, Pearson	2023
Science	Focus on Earth Science, Glencoe (6)	2007
Science	Biology: Cycles of Life, AGS	2019
Science	Focus on Elementary Biology; Focus on Elementary Chemistry; Focus on Elementary Physics	2014
Science	The Earth and Beyond, Steck Vaughn	2015
Science	Life Science, PCI	2015
Social science	American Government Pacemakers Series, Globe Fearon	2001
Social science	Economics Pacemaker Series, Globe Fearon	2001

Continued on page 13

Parental Involvement

The Orange County Department of Education recognizes the responsibility of the school to involve parents in all aspects of the special education process as legally required. The procedures for timely notification, parental input, and support are set up as legally mandated throughout the process from the beginning referral to the implementation of the Individual Education Program. Forms and procedures are changed so new legal mandates can be incorporated in a timely manner. We also invite parents to participate in activities at their child's school. Teacher and administrators strive to seek parent input and keep parents informed. The Early Education Infant and Preschool programs have a parent support component to ensure the delivery of services to parents.

For more information on how to become involved at the school, please contact Analee Kredel, Chief of Special Education Services at (714) 966-4129.

Professional Development

Professional Development Days

Number of school days dedicated to staff development and continuous improvement

2021-22	3
2022-23	3
2023-24	3

California School Dashboard

The California School Dashboard (Dashboard) <https://www.caschooldashboard.org/> reflects California's new accountability and continuous improvement system and provides information about how LEAs and schools are meeting the needs of California's diverse student population. The Dashboard contains reports that display the performance of LEAs, schools, and student groups on a set of state and local measures to assist in identifying strengths, challenges, and areas in need of improvement.

Textbooks and Instructional Materials, *Continued from page 12*

Textbooks and Instructional Materials List		2023-24 School Year
Subject	Textbook	Adopted
Social science	Maps, Globes, and Graphs, Steck Vaughn	2005
History/social science	American Story, Steck Vaughn	2006
History/social science	American Government Series, Saddleback Educational Publishing	2023
History/social science	History Shorts, PCI Ed Publishing	2003
History/social science	World History Shorts, PCI Ed Publishing	2005
Health	Decisions for Health, Book 1 & 2	2014
Health	Adulting Made Easy	2019

School Facility Good Repair Status

The table shows the results of the school's most recent inspection using the Facility Inspection Tool (FIT) or equivalent school form. This inspection determines the school facility's good repair status using ratings of good condition, fair condition or poor condition. The overall summary of facility conditions uses ratings of exemplary, good, fair or poor.

School Facility Good Repair Status		2023-24 School Year
Items Inspected	Repair Status	
Systems: Gas leaks, sewer, mechanical systems (heating, ventilation and HVAC)	Good	
Interior: Interior surfaces (floors, ceilings, walls and window casings)	Good	
Cleanliness: Pest/vermin control, overall cleanliness	Good	
Electrical: Electrical systems	Good	
Restrooms/fountains: Restrooms, sinks and drinking fountains	Good	
Safety: Fire safety, emergency systems, hazardous materials	Good	
Structural: Structural condition, roofs	Fair	
External: Windows/doors/gates/fences, playgrounds/school grounds	Good	
Overall summary of facility conditions	Exemplary	
Date of the most recent FIT report	10/4/2023	

Deficiencies and Repairs

The table lists the repairs required for all deficiencies found during the site inspection. Regardless of each item's repair status, all deficiencies are listed.

Deficiencies and Repairs		2023-24 School Year
Items Inspected	Deficiencies and Action Taken or Planned	Date of Action
Structural	Roof repairs needed—Reilly Elementary. Partner district notified, repairs to begin.	Fall 2023

School Facilities

Special Education Services of the Orange County Department of Education provides instructional services for students with moderate to severe disabilities on 13 different school sites in six Orange County school districts and on three community college campuses. The number of classrooms on these sites ranges from one to 12. Three of the sites, Philip J. Reilly Elementary School in Capistrano Unified School District, University High School in Irvine Unified School District, and Mann Elementary School in Anaheim, were the result of joint building projects between OCDE and the host district. These three sites have features unique to students with special needs (e.g., automatic doors and bathroom facilities in the classroom and video technology).

The host districts are generally responsible for maintaining the condition of the facility and the grounds. OCDE works cooperatively with all its host districts to maintain an environment that supports student access to instruction. In 2017, OCDE moved its Regional Oral Deaf & Hard of Hearing program from Los Alamitos to its campus at Horace Mann Elementary School. Slight renovations were done to the classrooms to meet the unique needs of these students. The general condition of the sites where OCDE's programs are housed is good. OCDE has custodians who work during and after school hours to ensure our facilities are cleaned and sanitized on a daily basis. As a response to the COVID-19 pandemic, additional cleaning protocols, access to cleaning supplies and PPE were put into place.

The majority of the students in Special Education Services receive home-to-school bus transportation. Classroom staff members meet the buses in the morning, and the students are escorted to their buses in the afternoon. Students are always within direct visual contact of school personnel. Visitors must sign in at the school office and receive a visitor's pass to enter the campuses.

Public Internet Access

Internet access is available at public libraries and other locations that are publicly accessible (e.g., the California State Library). Access to the internet at libraries and public locations is generally provided on a first-come, first-served basis. Other use restrictions include the hours of operation, the length of time that a workstation may be used (depending on availability), the types of software programs available at a workstation, and the ability to print documents.



Teacher Preparation and Placement

The teacher data displayed in this SARC is from the 2020-21 and the 2021-22 school years. The teacher data for the 2022-23 SARC will not be available prior to February 1, 2024, and therefore is not included. These tables display the number and percent of teacher authorization/assignment as well as the total number and percent of teaching positions at the school, district and state levels. For questions concerning the assignment of teachers outside their subject area of competence or the credential status of teachers, visit the California Commission on Teacher Credentialing website at <https://www.ctc.ca.gov/>.

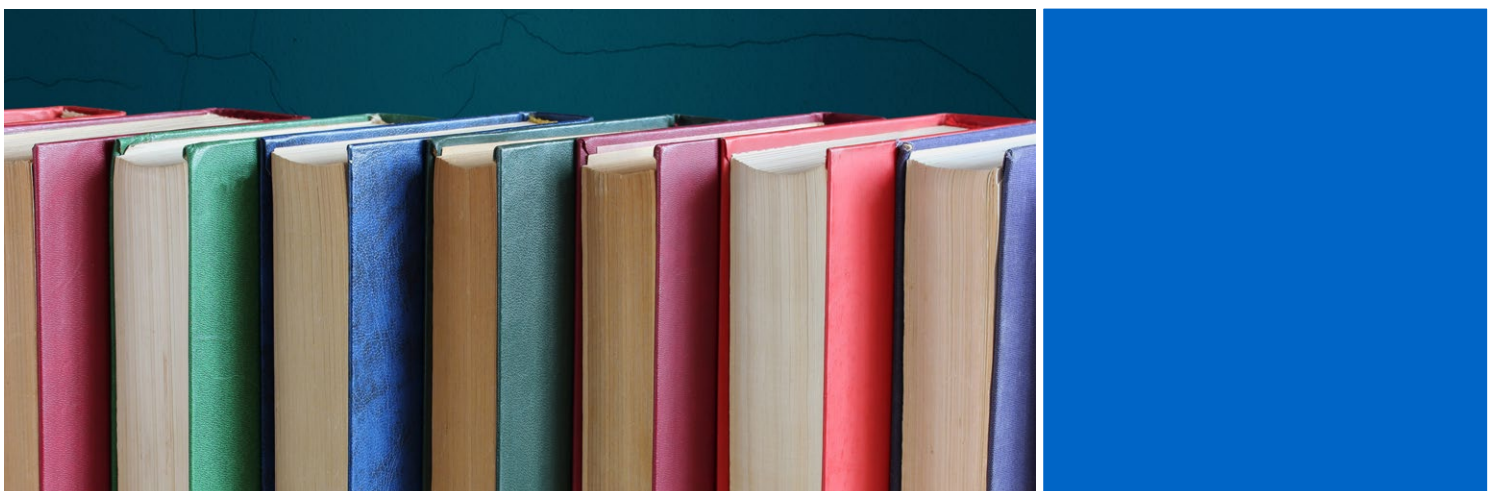
Teacher Preparation and Placement					2020-21 School Year	
Authorization/Assignment	School Number	School Percent	District Number	District Percent	State Number	State Percent
Fully (Preliminary or Clear) Credentialed for Subject and Student Placement (properly assigned)	26.0	44.5%	369.2	67.0%	228,366.1	83.1%
Intern Credential Holders Properly Assigned	0.0	0.0%	2.0	0.4%	4,205.9	1.5%
Teachers Without Credentials and Misassignments ("ineffective" under ESSA)	1.0	1.7%	62.9	11.4%	11,216.7	4.1%
Credentialed Teachers Assigned Out-of-Field ("out-of-field" under ESSA)	1.0	1.7%	79.8	14.5%	12,115.8	4.4%
Unknown	30.3	52.0%	37.0	6.7%	18,854.3	6.9%
Total Teaching Positions	58.3	100.0%	551.1	100.0%	274,759.1	100.0%

Teacher Preparation and Placement					2021-22 School Year	
Authorization/Assignment	School Number	School Percent	District Number	District Percent	State Number	State Percent
Fully (Preliminary or Clear) Credentialed for Subject and Student Placement (properly assigned)	41.3	70.9%	432.3	71.2%	234,405.2	84.0%
Intern Credential Holders Properly Assigned	2.0	3.4%	8.3	1.4%	4,853.0	1.7%
Teachers Without Credentials and Misassignments ("ineffective" under ESSA)	2.0	3.4%	26.7	4.4%	12,001.5	4.3%
Credentialed Teachers Assigned Out-of-Field ("out-of-field" under ESSA)	0.0	0.0%	81.2	13.4%	11,953.1	4.3%
Unknown	13.0	22.3%	58.9	9.7%	15,831.9	5.7%
Total Teaching Positions	58.3	100.0%	607.6	100.0%	279,044.8	100.0%

Note: The data in these tables is based on Full Time Equivalent (FTE) status. One FTE equals one staff member working full time; one FTE could also represent two staff members who each work 50 percent of full time. Additionally, an assignment is defined as a position that an educator is assigned to based on setting, subject, and grade level. An authorization is defined as the services that an educator is authorized to provide to students.

The data source is the California State Assignment Accountability System (CalSAAS) provided by the Commission on Teacher Credentialing. For information on the CalSAAS, visit the CALPADS web page at <https://www.cde.ca.gov/ds/sp/cl/calpadsupdfdash201.asp>.

For more information on the definitions listed above, refer to the Updated Teacher Equity Definitions web page at <https://www.cde.ca.gov/pd/ee/teacherequitydefinitions.asp>.





Teachers Without Credentials and Misassignments (considered "ineffective" under ESSA)

This table displays the number of authorization/assignments of teachers as well as the total number of teachers without credentials and misassignments at the school level. For questions concerning the permits, waivers, and misassignment of teachers, visit the California Commission on Teacher Credentialing website at <https://www.ctc.ca.gov/>.

Teachers Without Credentials and Misassignments	Two-Year Data	
	2020-21	2021-22
Authorization/Assignment		
Permits and Waivers	0.0	0.0
Misassignments	1.0	2.0
Vacant Positions	0.0	0.0
Total Teachers Without Credentials and Misassignments	1.0	2.0

Credentialed Teachers Assigned Out-of-Field (considered "out-of-field" under ESSA)

This table displays the number of teachers and the total out-of-field teachers at the school level.

For more information on the definitions listed above, refer to the California Commission on Teacher Credentialing's Administrator's Assignment Manual at <https://www.ctc.ca.gov/credentials/manuals>.

Credentialed Teachers Assigned Out-of-Field	Two-Year Data	
	2020-21	2021-22
Indicator		
Credentialed Teachers Authorized on a Permit or Waiver	1.0	0.0
Local Assignment Options	0.0	0.0
Total Out-of-Field Teachers	1.0	0.0

Class Assignments

This table displays the number of teachers and the total out-of-field teachers at the school level.

Misassignment and vacant teacher position data should be available in the district's personnel office.

Class Assignments	Two-Year Data	
	2020-21	2021-22
Indicator		
Misassignments for English Learners (a percentage of all the classes with English learners taught by teachers that are misassigned)	2.8%	3.4%
No credential, permit or authorization to teach (a percentage of all the classes taught by teachers with no record of an authorization to teach)	0.0%	0.0%

The data source is the California State Assignment Accountability System (CalSAAS) provided by the Commission on Teacher Credentialing. For information on the CalSAAS, visit the CALPADS web page at <https://www.cde.ca.gov/ds/sp/cl/calpadsup-dflash201.asp>.

For more information on the definitions listed above, refer to the Updated Teacher Equity Definitions web page at <https://www.cde.ca.gov/pd/ee/teacherequitydefinitions.asp>.



Academic Counselors and School Support Staff

This table displays information about academic counselors and support staff at the school and their full-time equivalent (FTE).

Ratio of Pupils to Academic Counselors and School Support Staff Data

2022-23 School Year

	Ratio
Pupils to Academic counselors	86:1
Support Staff	FTE
Counselor (academic, social/behavioral or career development)	1.00
Library media teacher (librarian)	0.00
Library media services staff (paraprofessional)	0.00
Psychologist	7.00
Social worker	0.00
Nurse	4.00
Speech/language/hearing specialist	9.25
Resource specialist (nonteaching)	0.00



Financial Data

The financial data displayed in this SARC is from the 2021-22 fiscal year. The most current fiscal information available provided by the state is always two years behind the current school year and one year behind most other data included in this report. For detailed information on school expenditures for all districts in California, see the California Department of Education (CDE) Current Expense of Education & Per-pupil Spending web page at www.cde.ca.gov/ds/fd/ec. For information on teacher salaries for all districts in California, see the CDE Certificated Salaries & Benefits web page at www.cde.ca.gov/ds/fd/cs. To look up expenditures and salaries for a specific school district, see the Ed-Data website at www.ed-data.org.

District Financial Data

This table displays district teacher and administrative salary information and compares the figures to the state averages for districts of the same type and size based on the salary schedule. Note: The district salary data does not include benefits.

Salary Data	2021-22 Fiscal Year	
	Orange CDE	Similar Sized District
Beginning teacher salary	⊕	⊕
Midrange teacher salary	⊕	⊕
Highest teacher salary	⊕	⊕
Average elementary school principal salary	⊕	⊕
Average middle school principal salary	⊕	⊕
Average high school principal salary	⊕	⊕
Superintendent salary	⊕	⊕
Teacher salaries: percentage of budget	⊕	⊕
Administrative salaries: percentage of budget	⊕	⊕

Financial Data Comparison

This table displays the school's per-pupil expenditures from unrestricted sources and the school's average teacher salary and compares it to the district and state data.

Financial Data Comparison	2021-22 Fiscal Year	
	Expenditures Per Pupil From Unrestricted Sources	Annual Average Teacher Salary
Special Education	\$22,083	\$140,238
Orange CDE	\$17,601	\$142,970
California	\$7,607	◆
School and district: percentage difference	+25.5%	-1.9%
School and California: percentage difference	+190.3%	◆

- ⊕ County Office of Education schools are not required to display this data (Education Code Section 41409.3).
- ◆ Information not available.
- ◆ The percentage difference cannot be calculated because California Average Teacher Salary is not available.

Data for this year's SARC was provided by the California Department of Education and school and district offices. For additional information on California schools and districts and comparisons of the school to the district, the county and the state, please visit DataQuest at <http://dq.cde.ca.gov/dataquest>. DataQuest is an online resource that provides reports for accountability, test data, enrollment, graduates, dropouts, course enrollments, staffing and data regarding English learners. Per Education Code Section 35256, each school district shall make hard copies of its annually updated report card available, upon request, on or before February 1. All data accurate as of January 2024.

Types of Services Funded

The Orange County Department of Special Education does not receive categorical funds.

School Financial Data

The following table displays the school's average teacher salary and a breakdown of the school's expenditures per pupil from unrestricted and restricted sources.

School Financial Data	
2021-22 Fiscal Year	
Total expenditures per pupil	\$22,083
Expenditures per pupil from restricted sources	\$0
Expenditures per pupil from unrestricted sources	\$22,083
Annual average teacher salary	\$140,238



Expenditures Per Pupil

Supplemental/restricted expenditures come from money whose use is controlled by law or by a donor. Money that is designated for specific purposes by the district or governing board is not considered restricted. Basic/unrestricted expenditures are from money whose use, except for general guidelines, is not controlled by law or by a donor.