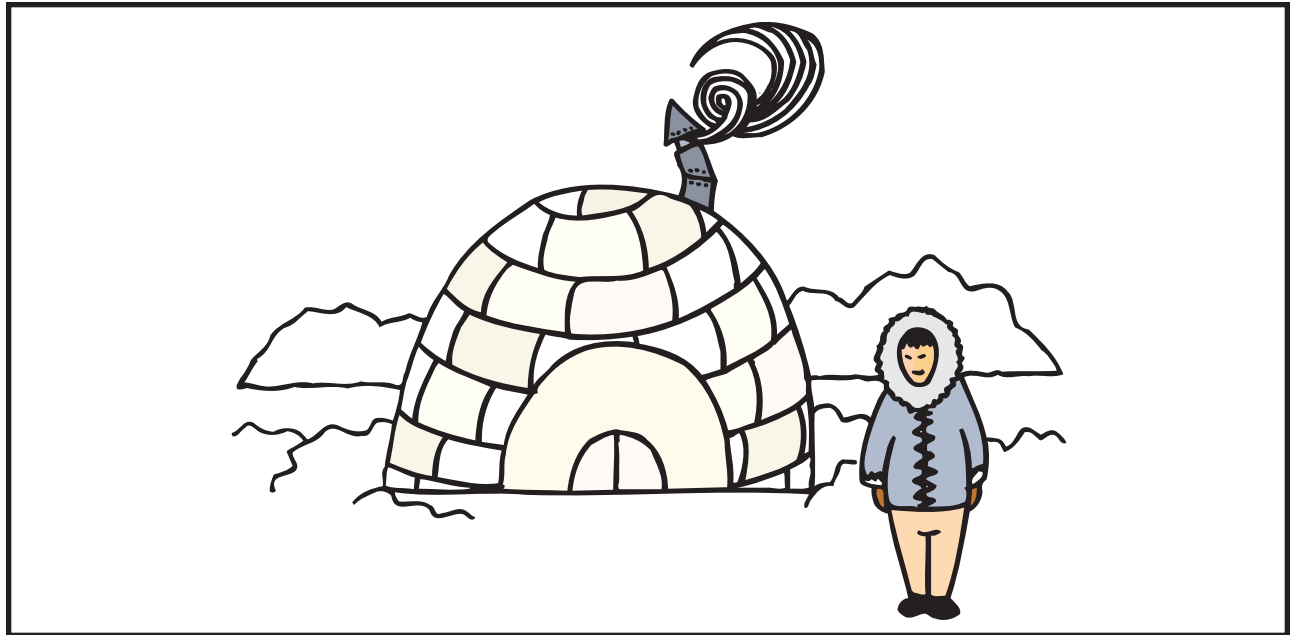
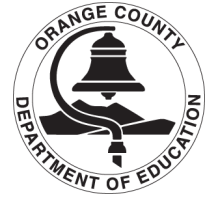




Changing Environment Student Activity



You are a person living in Alaska. There is a natural disaster which causes the climate to become very warm. Lakes and rivers are drying up and are too small to hold many fish. Thick forests of trees begin to grow. Because so much of the ice and snow melt, the ground in some areas becomes marshy. Animals and plants you have never seen before begin to arrive. Imagine this happened overnight. Your old way of survival will no longer allow you to live in this new environment. What can you do? Answer the following questions:

- Where will you find food?
- Where will you live?
- How will you find or make shelter?
- How will you change your behavior to survive in the warm weather?
- What problems will you have with the new plants and animals?

CHECK FOR UNDERSTANDING

The following questions can be used to guide the discussion:

- Can animals or plants make changes overnight? (Animals may be able to make sudden behavioral changes, but in general, changes will occur gradually over time with each new generation)
- Would some animals or plants die? Why or why not?